

LANDSCAPE TABULAR DATA

NON-RESIDENTIAL LANDSCAPE REQUIREMENTS			
CATEGORY	REQUIREMENT	VEGETATION REQUIRED	VEGETATION PROVIDED
PERIMETER VEGETATION			
NORTH PROPERTY LINE (330 L.F.)	1 CANOPY TREE / 40 L.F.	9 TREES	9 (8 TREES AND 3 PALMS)
WEST PROPERTY LINE (307 L.F.)	1 CANOPY TREE / 40 L.F.	8 TREES	8 (7 TREES AND 3 PALMS)
EAST PROPERTY LINE (315 L.F.)	1 CANOPY TREE / 40 L.F.	8 TREES	8 TREES
NORTH PROPERTY LINE (330 L.F.)	CONTINUOUS HEDGE	330' CONTINUOUS HEDGE	330' CONTINUOUS HEDGE
WEST PROPERTY LINE (307 L.F.)	CONTINUOUS HEDGE	307' CONTINUOUS HEDGE	307' CONTINUOUS HEDGE
EAST PROPERTY LINE (315 L.F.)	CONTINUOUS HEDGE	315' CONTINUOUS HEDGE	315' CONTINUOUS HEDGE

ROADWAY LANDSCAPE BUFFER			
SOUTH PROPERTY LINE (330 L.F.)	1 CANOPY TREE / 40 L.F.	9 TREES	9 TREES
	CONTINUOUS HEDGE	325' CONTINUOUS HEDGE	325' CONTINUOUS HEDGE
	1 TREE / 2,000 S.F.	6,760 S.F. = 4 TREES	4 (3 TREES AND 3 PALMS)
	40 SHRUBS / 2,000 S.F.	6,760 S.F. = 136 SHRUBS	473 SHRUBS

R.O.W. STREET TREES			
	1 TREE / 40 L.F.	330 L.F. = 9 TREES	9 (6 TREES IN R.O.W. AND 3 INSIDE PROPERTY LINE DUE TO LIMITED SPACE)

VEHICULAR USE AREA			
	1 TREE EVERY ISLAND	15 TREES	15 TREES
	1 TREE / 40 L.F. OF MEDIAN	200 L.F. = 5 TREES	5 TREES

LANDSCAPING BETWEEN BUILDING AND PARKING			
TREES	1 / 40 L.F. OF BUILDING	358 L.F. = 9 TREES	9 (7 TREES AND 6 PALMS)
SHRUBS	20 / 40 L.F. OF BUILDING	179 SHRUBS	182 SHRUBS
GROUNDCOVERS	30 / 40 L.F. OF BUILDING	269 GROUNDCOVERS	407 GROUNDCOVERS

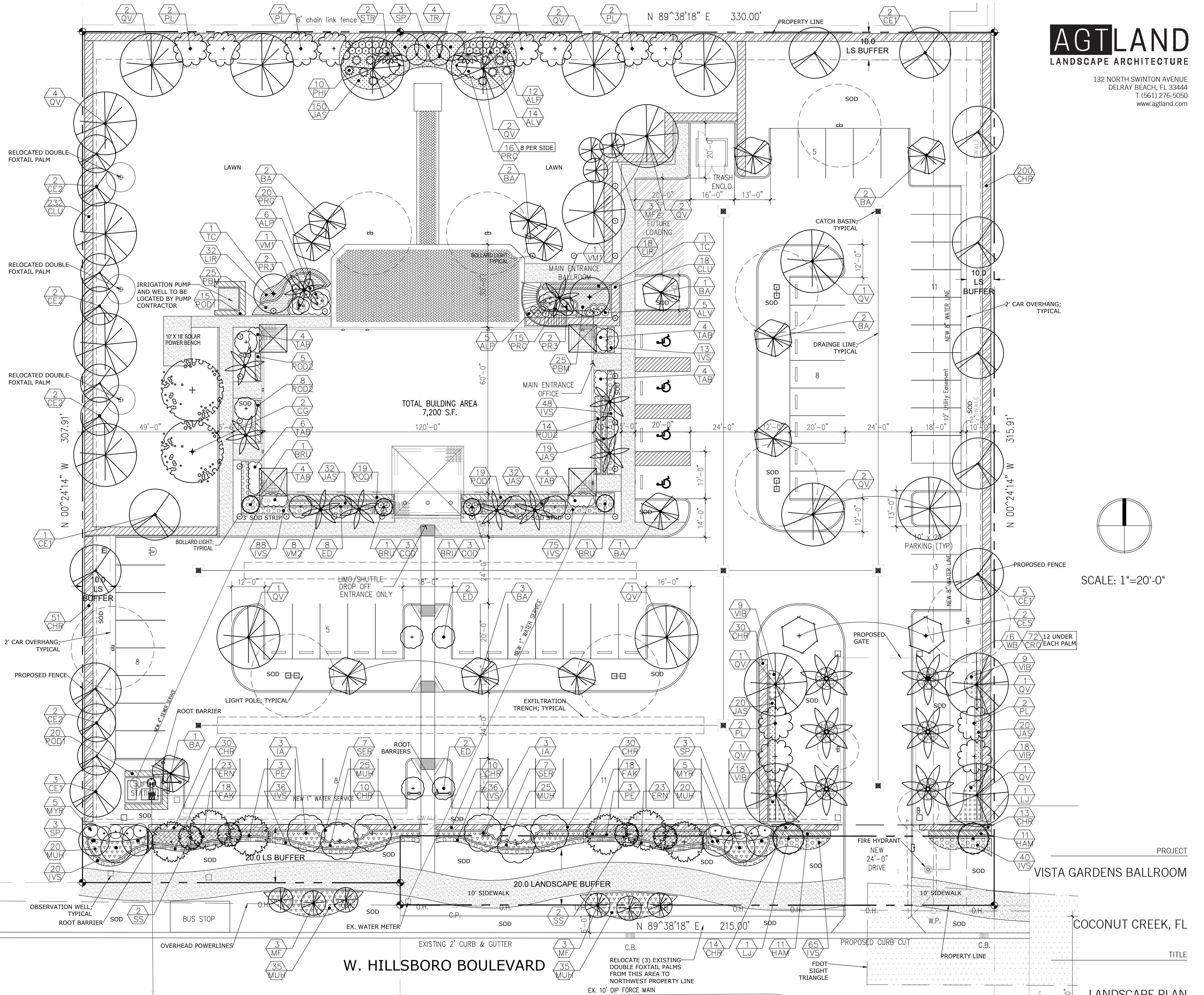
OVERALL SITE LANDSCAPE REQUIREMENTS			
TREES	1/1,000 S.F. GREENSPACE	44,113 S.F. = 44 TREES	44 (40 TREES AND 12 PALMS)
SHRUBS	5/1,000 S.F. GREENSPACE	220 SHRUBS	1,022 SHRUBS
TOTALS		120 TREES REQUIRED	120 TREES PROVIDED
		804 SHRUBS/GROUNDCOVERS	2,084 SHRUBS/GROUNDCOVERS PROVIDED ON SITE

PLANT LIST

CAT. #	TREE CANOPY AREA S.F.	KEY	QTY	PLANT AND SPECIFICATION
2 (150 sf)	2,100	BA	14	Bulnesia arborea (Verawood) 12' ht., 5' spr., 4' c.t., 2" cal., matched, full
1 (300 sf)	3,300	N CE1	11	Conocarpus erectus (Green Buttonwood) 12' ht., 5' spr., 4' c.t., 2" cal., matched, full
1 (300 sf)	2,400	N CE2	8	Conocarpus erectus (Green Buttonwood) 10' ht., 4' spr., 2" cal., matched, full
2 (150 sf)	300	N CE3	2	Conocarpus erectus 'sericeus' (Silver Buttonwood) 10' ht., 4' spr., multi-trunk, 2" cal., matched, full
2 (150 sf)	300	CG	2	Coccoloba grandifolia (Bridal Veil Tree) 10' ht., 4' spr., 2" cal., matched, full
4 (50 sf)	600	ED	12	Elaeagnus decipiens (Japanese Blueberry) 10' ht., 4' spr., 4' c.t., 2" cal., matched, full
2 (150 sf)	900	N IA	6	Ilex attenuata (Eggleston, Eggleston Holly) 10' ht., 4' spr., 4' c.t., 2" cal., matched, full
3 (100 sf)	200	LJ	2	Ligustrum japonicum (Japanese Privet) 8' ht., 4' spr., 1.5" cal., multi-trunk, symmetrical, full
3 (100 sf)	900	N MF	9	Myrsine fragnans (Simpson's Stopper) 8' ht., 4' spr., 1.5" cal., matched
1 (300 sf)	6,300	N QV	21	Quercus virginiana (Live Oak) 12' ht., 5' spr., 2" cal., full
3 (100 sf)	900	N SP	9	Sabal palmetto (Sabal Palm) 16'-20' ht., 8' c.t., staggered heights, full
2 (150 sf)	600	SS	4	Senna surattensis (Glauca Cassia) 10' ht., 4' spr., 2" cal.
2 (150 sf)	300	TC	2	Tabebuia chrysochloris (Gold Trumpet Tree) 10' ht., 4' spr., 2" cal., symmetrical, matched, full
4 (50 sf)	200	N TR	4	Thrinax radiata (Double Thatch Palm) 3' g.w., doubles, full
1 (300 sf)	1,800	N PE	6	Pinus elliottii (Slash Pine) 12' ht., 5' spr., 2" cal., matched, full
2 (150 sf)	1,800	PL	12	Plumeria sp. (Frangipani) 10' ht., 4' spr., 2" cal., multi-trunk, matched, color by owner
4 (50 sf)	100	VM1	2	Veitchia montgomeryana (Montgomery Palm) 20' o.a. ht., single, matched, full
4 (50 sf)	400	VM2	8	Veitchia montgomeryana (Double Montgomery Palm) 20' o.a. ht., doubles, full
3 (100 sf)	600	WB	6	Wodyetia bifurcata (Foxtail Palm) 16' o.a. ht., single, matched, full
TOTAL REPLACEMENT CANOPY		24,000 S.F.		

KEY	QTY	PLANT AND SPECIFICATION
SHRUBS, GROUNDCOVERS AND ACCENTS		
ALV	19	Alpinia z. 'Variegata' (Variegated Shell Ginger) 30' ht., 24' spr., full
APL	23	Alpinia zerumbet (Green Shell Ginger) 30' ht., 24' spr., full
BRU	4	Brunfelsia grandiflora (Yesterday-Today-Tomorrow) 4' ht., 5' spr., multi-trunk, 25 gal., matched, full
N CHR	388	Chrysotholus icoccus (Cocoplum Hedge) 24' ht., 24' spr., 24" o.c.
CLU	250	Clusia guittifera (Clusia Hedge) 5' ht., 30' spr., 30" o.c.
COD	6	Codiaeum 'Styppy Painter' (Styppy Painter Croton) 24' ht., 24' spr., full
CRO	72	Codiaeum 'Gold Dust' (Gold Dust Croton) 24' ht., 24' spr., 24" o.c., full
N ERN	46	Ernodea littoralis (Golden Creeper) 18' ht., 18' spr., 24" o.c.
N FAK	36	Tripsacum dactyloides (Fakahatchee Grass) 20' ht., 20' spr., 36" o.c.
HAM	22	Hemelia patens 'Caluso' (Firebush) 20' ht., 20' spr., 24" o.c.
N IVS	421	Ilex vomitoria 'Schillings' (Yaupon Holly) 14' ht., 14' spr., 18" o.c.
LIR	50	Liriope muscarifolia (Liriope) 14' ht., 14' spr., 18" o.c.
JAS	273	Jasminum multiflorum (Downy Jasmine) 14' ht., 14' spr., 18" o.c.
N MUH	160	Muhlenbergia capillaris (Muhly Grass) 24' ht., 30" o.c., full
N MYR	10	Myrica cerifera (Wax Myrtle) 3' ht., 2' spr., full
PHI	10	Philodendron selloum (Philodendron) 3' ht., 3' spr., full
PBM	50	Philodendron 'Burlie Marx' (Burlie Marx Philodendron) 18' ht., 24" o.c.
PRC	51	Philodendron 'Rajo Congo' (Rajo Congo Philodendron) 24' ht., 24' spr., 24" o.c.
POD1	73	Podocarpus macrophyllus (Podocarpus Hedge) 3' ht., 24' spr., 24" o.c.
POD2	27	Podocarpus macrophyllus (Podocarpus Hedge) 5' ht., 24' spr., 24" o.c.
PR3	4	Phoenix roebelenii (Pygmy Date Palm) 5' ht., 5'-6' spr., triple, full
N SER	14	Serenoa repens (Saw Palmetto) 30' ht., 30' spr., full
STR	2	Streptocarpus nicotii (White Bird of Paradise) 8' ht., 5' spr., full clump
TAB	26	Tabernaemontana divaricata (Pinwheel Jasmine) 3' ht., 24' spr., 30" o.c., full
N VIB	53	Viburnum obovatum (Water's Viburnum) 18' ht., 18" spr., 30" o.c.

N DENOTES NATIVE SPECIES



MITIGATION DATA

TREE CATEGORY	TREE SPECIES REQ'TS
REPLACEMENT TREE CATEGORY	EQUIVALENT REPLACEMENT CANOPY AREA IN S.F.
CATEGORY 1	300 SF
CATEGORY 2	150 SF
CATEGORY 3	100 SF
CATEGORY 4	50 SF
TOTAL S.F. CANOPY TO BE MITIGATED: 1,600 S.F.	
TOTAL TREES REQUIRED FOR MITIGATION: 6 Category 1 (or equivalent)	
TOTAL MITIGATION PROVIDED: 6 Category 1 Live Oaks	

TREE REMOVAL NOTE

TREES REMOVED PER TREE REMOVAL PERMIT# 19000618
TOTAL CANOPY REMOVED = 1,600 S.F.
ALL INVASIVE TREES AND SHRUBS TO BE REMOVED FROM PROPERTY.
(3) EXISTING DOUBLE FOXTAIL PALMS ARE BEING RELOCATED ON-SITE. SEE LANDSCAPE PLAN FOR LOCATION.

GREEN CITY PLAN - TREE CANOPY ACHIEVED

PROJECT AREA = 103,364 S.F.
CANOPY ACHIEVED = 24,000 S.F. OR 23.2% CANOPY ACHIEVED (SEE PLANT LIST)

SPECIES DIVERSIFICATION

THERE ARE 140 PROPOSED TREES/PALMS PROVIDED ON SITE.
NO MORE THAN 35 TREES (25%) OF ONE SPECIES CAN BE USED.
21% ARE PALM
79% ARE TREES:
-10% ARE SMALL TREES 8' HT.
-46% ARE MEDIUM TREES 10' HT.
-44% ARE LARGE SHADE TREES 12' HT.
THERE ARE 2,084 SHRUBS/GROUNDCOVERS ON THE PLAN.
NO MORE THAN 521 (25%) OF ONE SPECIES CAN BE USED.

NATIVE CALCULATIONS

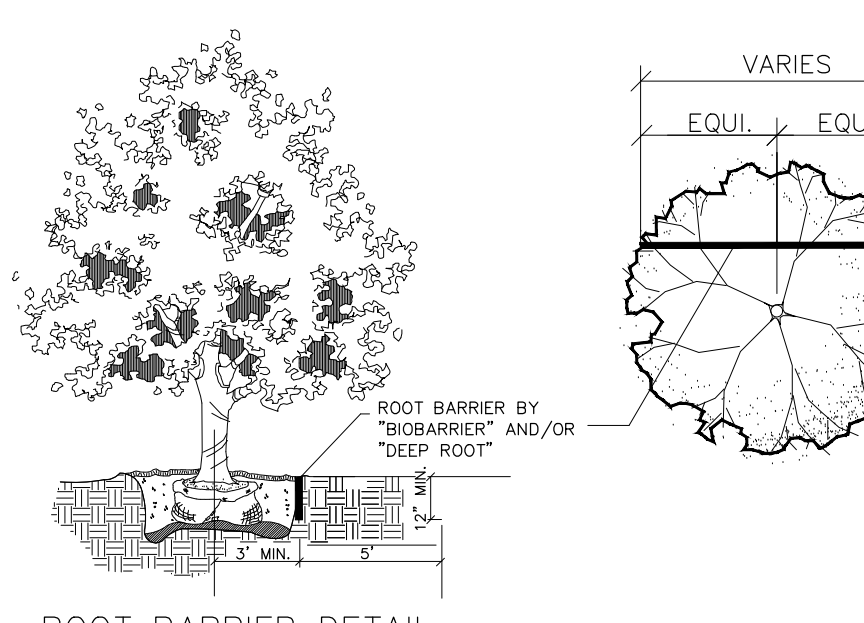
THERE ARE 140 PROPOSED TREES/PALMS ON THE PLAN. 76 ARE NATIVE = 54% NATIVE.
THERE ARE 2,084 PROPOSED SHRUBS/GROUNDCOVERS ON THE PLAN. 1,133 ARE NATIVE = 54% NATIVE.

VUA LANDSCAPE AREA CALCULATION

VEHICULAR USE AREA = 38,505 S.F.
38,505 S.F. / 100 S.F. = 386 S.F. OF REQUIRED LANDSCAPE AREA
THIS REQUIRED LANDSCAPE AREA IS ACHIEVED BY PARKING LOT ISLANDS.
OVER 600 S.F. OF LANDSCAPE AREA IS PROPOSED IN THE LANDSCAPE ISLANDS.

NOTE

CITY HAS REQUIRED THAT THE CONTRACTOR SET UP PRE-CONSTRUCTION MEETING WITH THE CITY LANDSCAPE INSPECTOR PRIOR TO ANY LANDSCAPE OR IRRIGATION WORK.



ROOT BARRIER DETAIL

ROOT BARRIER TO BE INSTALLED WHERE TREES ARE WITHIN 6' OF HARDSCAPE OR UNDERGROUND UTILITIES.



132 NORTH SWINTON AVENUE
DELRAY BEACH, FL 33444
T (561) 276-5050
www.agtland.com

SCALE: 1"=20'-0"

PROJECT
VISTA GARDENS BALLROOM
COCONUT CREEK, FL
TITLE
LANDSCAPE PLAN

PROJ. NO.	FILE NAME	DRAWN	DATE	REV.
	BB		03/06/20	
			05/01/20	
			06/30/20	
			08/05/20	

SHEET
LP-1
OF
3