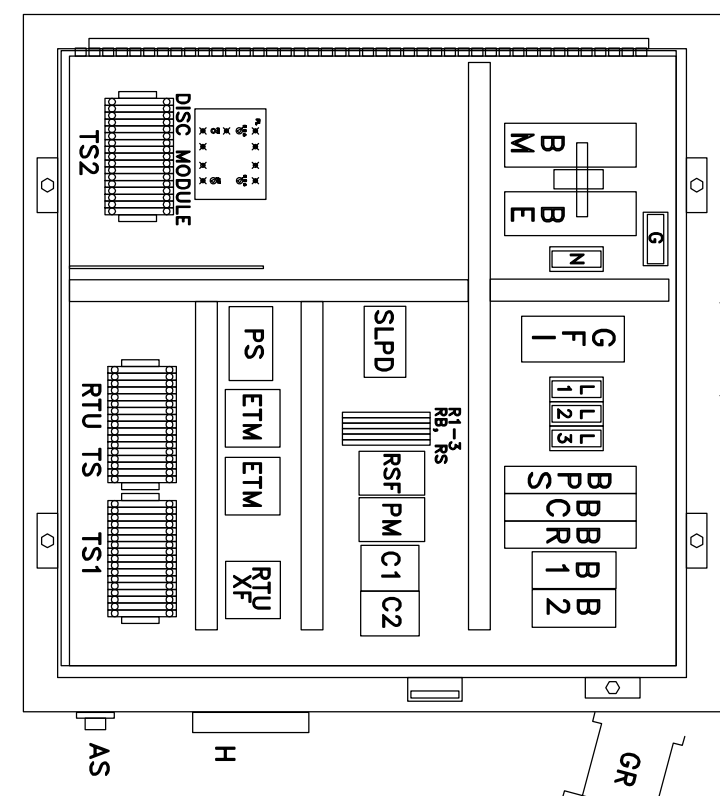


CONTROL CENTER DESIGNED & MANUFACTURED TO MEET ALL D.E.P. REQUIREMENTS

MOPS CONTROL CENTER

SEE SCHEDULE FOR ELECTRICAL SERVICE REQUIREMENTS

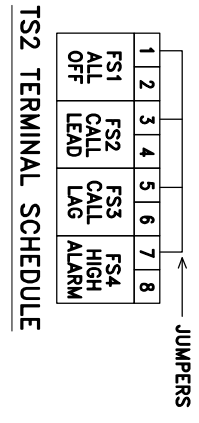


PANEL COMPONENTS

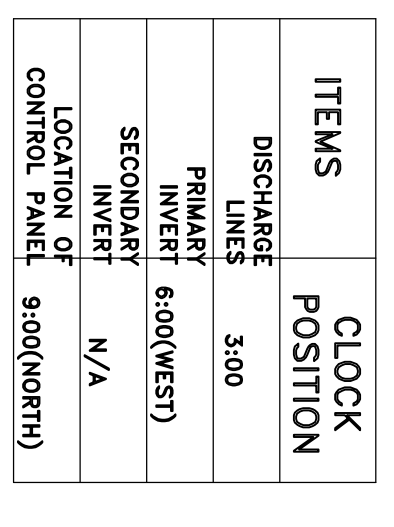
- AL ALARM LIGHT
- AL1 ALARM SILENCE SWITCH
- AS2 ALARM SILENCE SWITCH
- BR1-2 MOTOR BREAKERS
- BR3 EMERGENCY BREAKER
- BR4 EMERGENCY BREAKER
- BR5 POWER SUPPLY BREAKER
- BR6 POWER SUPPLY BREAKER
- BR7 RECEPTACLE BREAKER
- BR8 RECEPTACLE BREAKER
- BR9 RECEPTACLE BREAKER
- BR10 RECEPTACLE BREAKER
- BR11 RECEPTACLE BREAKER
- BR12 RECEPTACLE BREAKER
- BR13 RECEPTACLE BREAKER
- BR14 RECEPTACLE BREAKER
- BR15 RECEPTACLE BREAKER
- BR16 RECEPTACLE BREAKER
- BR17 RECEPTACLE BREAKER
- BR18 RECEPTACLE BREAKER
- BR19 RECEPTACLE BREAKER
- BR20 RECEPTACLE BREAKER
- BR21 RECEPTACLE BREAKER
- BR22 RECEPTACLE BREAKER
- BR23 RECEPTACLE BREAKER
- BR24 RECEPTACLE BREAKER
- BR25 RECEPTACLE BREAKER
- BR26 RECEPTACLE BREAKER
- BR27 RECEPTACLE BREAKER
- BR28 RECEPTACLE BREAKER
- BR29 RECEPTACLE BREAKER
- BR30 RECEPTACLE BREAKER
- BR31 RECEPTACLE BREAKER
- BR32 RECEPTACLE BREAKER
- BR33 RECEPTACLE BREAKER
- BR34 RECEPTACLE BREAKER
- BR35 RECEPTACLE BREAKER
- BR36 RECEPTACLE BREAKER
- BR37 RECEPTACLE BREAKER
- BR38 RECEPTACLE BREAKER
- BR39 RECEPTACLE BREAKER
- BR40 RECEPTACLE BREAKER
- BR41 RECEPTACLE BREAKER
- BR42 RECEPTACLE BREAKER
- BR43 RECEPTACLE BREAKER
- BR44 RECEPTACLE BREAKER
- BR45 RECEPTACLE BREAKER
- BR46 RECEPTACLE BREAKER
- BR47 RECEPTACLE BREAKER
- BR48 RECEPTACLE BREAKER
- BR49 RECEPTACLE BREAKER
- BR50 RECEPTACLE BREAKER
- BR51 RECEPTACLE BREAKER
- BR52 RECEPTACLE BREAKER
- BR53 RECEPTACLE BREAKER
- BR54 RECEPTACLE BREAKER
- BR55 RECEPTACLE BREAKER
- BR56 RECEPTACLE BREAKER
- BR57 RECEPTACLE BREAKER
- BR58 RECEPTACLE BREAKER
- BR59 RECEPTACLE BREAKER
- BR60 RECEPTACLE BREAKER
- BR61 RECEPTACLE BREAKER
- BR62 RECEPTACLE BREAKER
- BR63 RECEPTACLE BREAKER
- BR64 RECEPTACLE BREAKER
- BR65 RECEPTACLE BREAKER
- BR66 RECEPTACLE BREAKER
- BR67 RECEPTACLE BREAKER
- BR68 RECEPTACLE BREAKER
- BR69 RECEPTACLE BREAKER
- BR70 RECEPTACLE BREAKER
- BR71 RECEPTACLE BREAKER
- BR72 RECEPTACLE BREAKER
- BR73 RECEPTACLE BREAKER
- BR74 RECEPTACLE BREAKER
- BR75 RECEPTACLE BREAKER
- BR76 RECEPTACLE BREAKER
- BR77 RECEPTACLE BREAKER
- BR78 RECEPTACLE BREAKER
- BR79 RECEPTACLE BREAKER
- BR80 RECEPTACLE BREAKER
- BR81 RECEPTACLE BREAKER
- BR82 RECEPTACLE BREAKER
- BR83 RECEPTACLE BREAKER
- BR84 RECEPTACLE BREAKER
- BR85 RECEPTACLE BREAKER
- BR86 RECEPTACLE BREAKER
- BR87 RECEPTACLE BREAKER
- BR88 RECEPTACLE BREAKER
- BR89 RECEPTACLE BREAKER
- BR90 RECEPTACLE BREAKER
- BR91 RECEPTACLE BREAKER
- BR92 RECEPTACLE BREAKER
- BR93 RECEPTACLE BREAKER
- BR94 RECEPTACLE BREAKER
- BR95 RECEPTACLE BREAKER
- BR96 RECEPTACLE BREAKER
- BR97 RECEPTACLE BREAKER
- BR98 RECEPTACLE BREAKER
- BR99 RECEPTACLE BREAKER
- BR100 RECEPTACLE BREAKER

ENCLOSURE  
NEMA 4X Stainless Steel  
Single Door, Padlock, Hinged  
30" x 30" x 8"

NOTES:  
1. TERMINAL STRIP FOR PUMPS  
2. TERMINAL STRIP FOR FLOATS  
3. TERMINAL STRIP FOR CLAMPS



HUB AND INVERT LOCATION



NOTE: BACKFILL AROUND LIFT UP TO FINISH GRADE SHALL BE COMMON FILL COMPACTED IN 12-INCH MAX. LIFTS TO 98% DENSITY FOR STABILITY. EXERCISE CARE NOT TO DAMAGE WELL DURING COMPACTION.

MATERIALS

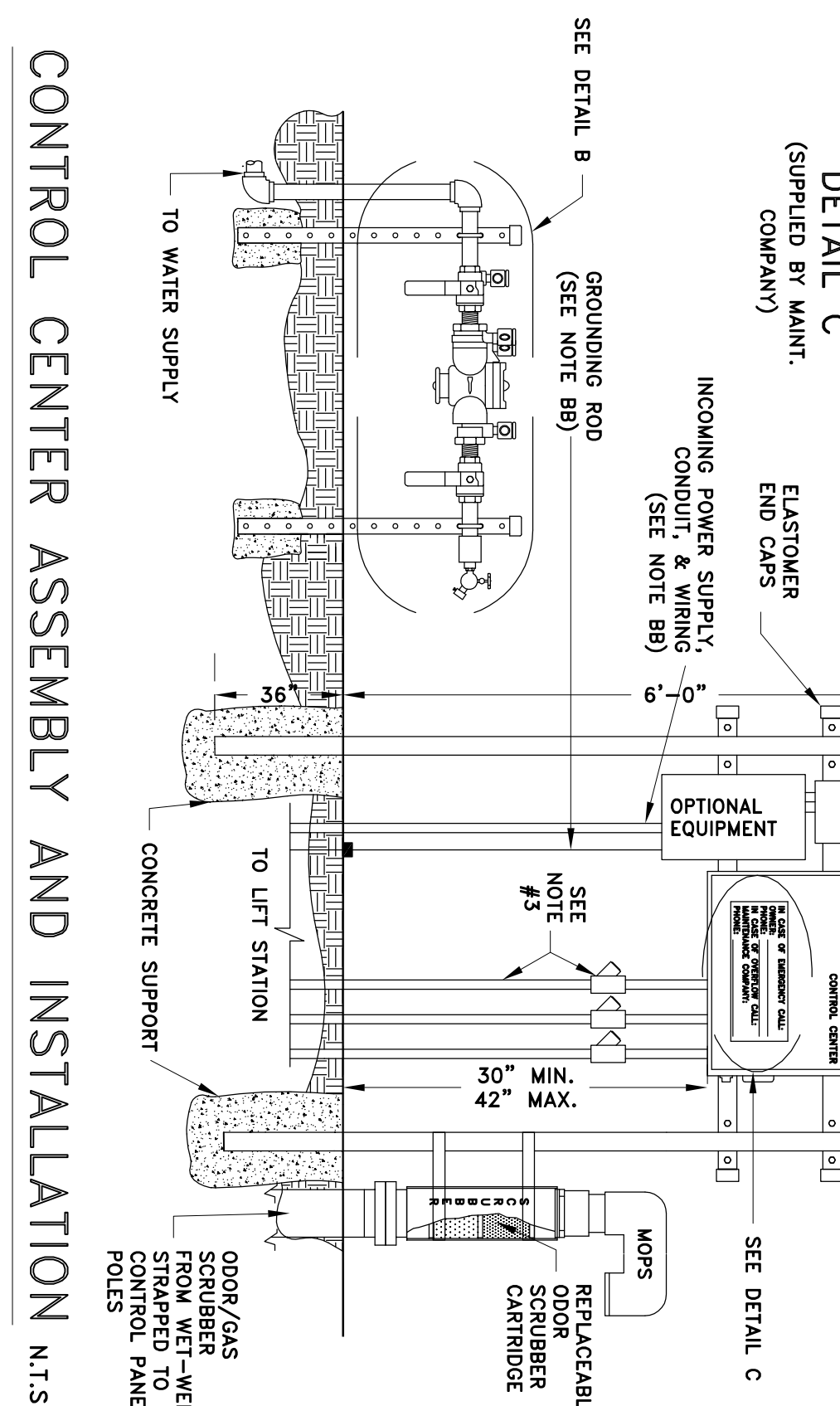
ITEM QTY.	DESCRIPTION
A 1	3/4" x 24" S.S. NIPPLE
B 2	3/4" x 1" S.S. 90° ELBOW
C 2	1"x1/4" S.S. SUPPORT BRACKET
D 2	SUPPORT BRACKET CAS P/N 520
E 2	3/4" S.S. PIPE BOLTS

MATERIALS

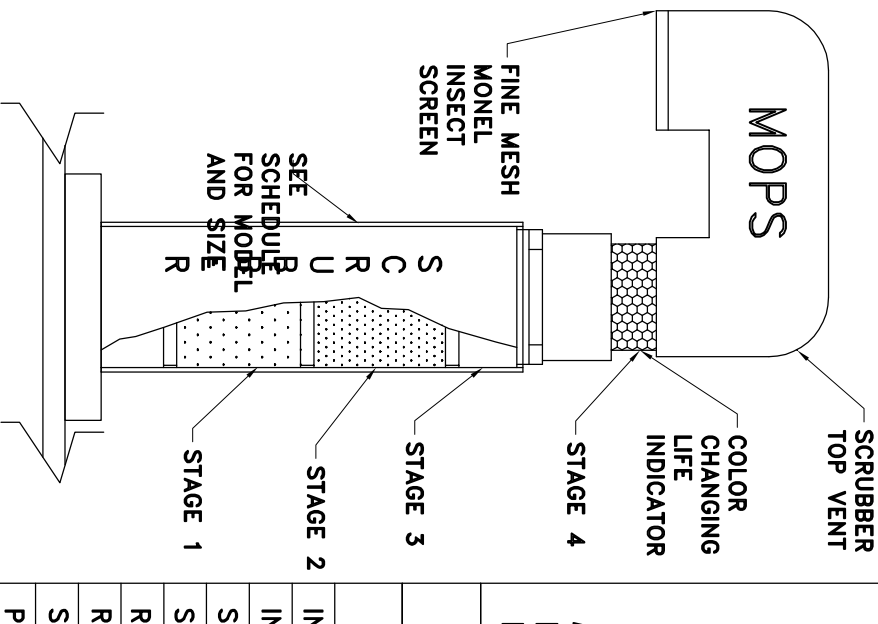
ITEM QTY.	DESCRIPTION
F 1	3/4" AP. BACKFLOW PREVENTER
G 1	3/4" x 4" S.S. NIPPLE
H 1	3/4" x 3/4" S.S. COUPLING
I 1	3/4" BRONZE HOSE BIB
J 1	3/4" VACUUM BREAKER

R.P.Z. BACKFLOW PREVENTER ASSEMBLY DETAIL  
U.S.C. AND ASS.E. APPROVED  
N.T.S.

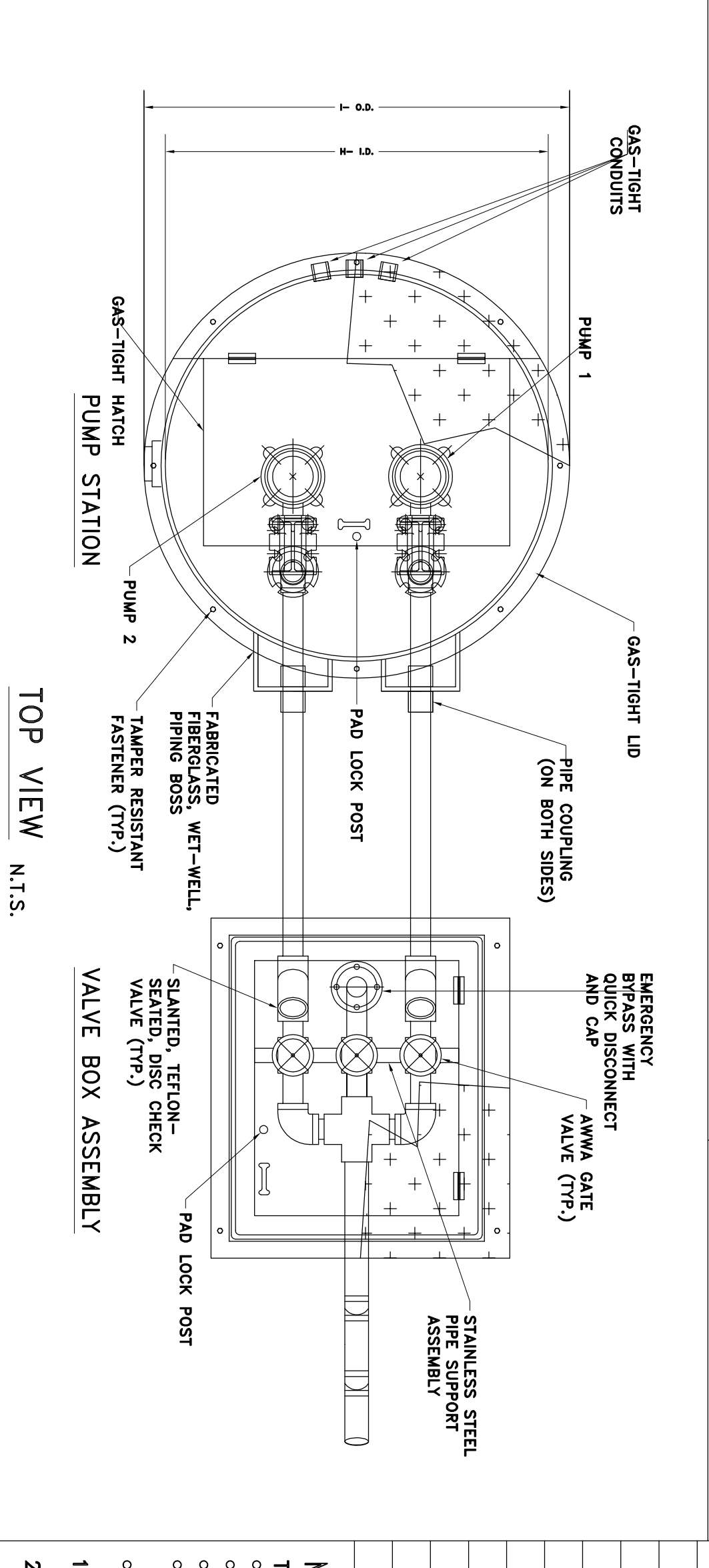
IN CASE OF EMERGENCY CALL  
OWNER:  
PHONE:  
IN CASE OF OVERFLOW CALL  
MAINTENANCE COMPANY:  
PHONE:



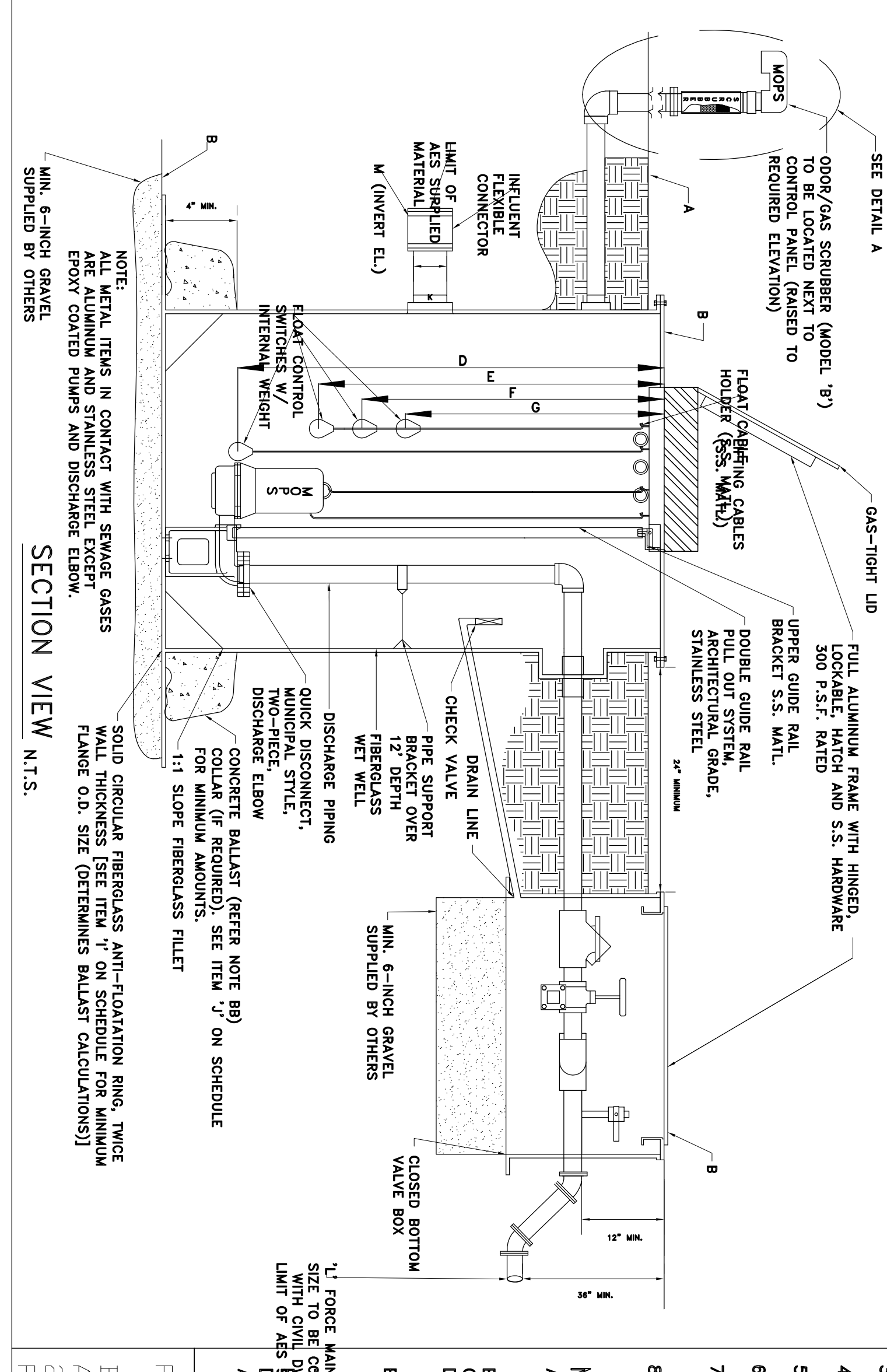
CONTROL CENTER ASSEMBLY AND INSTALLATION



MOPS ODOR/GAS SCRUBBER  
NOTES:  
1. SCRUBBER DESIGNED TO REMOVE TOXIC SEWAGE GASES, H2S, AND METHANOL AND METHANOL SULFIDES.  
2. SCRUBBER'S LIFE EXPECTANCY CALCULATIONS ARE INCLUDED IN SHOP DRAWING SUBMITTALS.  
3. SCRUBBER UNIT CAN BE MOUNTED ON-SITE GENERATOR SYSTEM.  
4. MODEL 'B' SHOWN.



TOP VIEW



SECTION VIEW

MOPS PUMP STATION SCHEDULE

MOPS SERIES	ITEM DESCRIPTION	QTY.	MODEL DESIGNATION
	100 YEAR FLOOD ELEVATION	1	B22-4896-B-3.0
	25 YEAR FLOOD ELEVATION	1	VBA-22
	GRADE ELEVATION	1	OOS-B
	TOP ELEVATION OF WET WELL	1	75
	BOTTOM ELEVATION OF WET WELL	1	PSC-221-3.0
	ALL PUMPS OFF ELEVATION	1	FDS-60-1-2-PS
	LEAD PUMP ON ELEVATION	1	CCMA-32AL
	HIGH ALARM ELEVATION	1	N/A
	INSIDE DIAMETER OF WET-WELL	1	N/A
	OUTSIDE DIAMETER OF ANTI-FLOATION RINGS	1	N/A
	MINIMUM CURB FEET OF CONCRETE BALLAST (CU YDS)	1	000/(0)
	INVERT PIPE DIAMETER	1	4"
	FORCE MAIN DIAMETER	1	2"
	PRIMARY INVERT ELEVATION	1	13.00'
	SECONDARY INVERT ELEVATION	1	N/A

REVISION	DATE
1	11/1/11
2	11/1/11
3	11/1/11
4	11/1/11

MOPS PUMP STATION COMPLIANCE NOTES:  
THIS PUMP STATION DESIGN COMPLIES WITH THE FOLLOWING REQUIRED STANDARDS:  
STATE OF FLORIDA ENVIRONMENTAL PROTECTION STANDARDS  
FLORIDA ADMINISTRATIVE CODE (F.A.C.): 62-640.400—COLLECTION AND TRANSMISSION SYSTEMS  
NATIONAL ELECTRIC CODE (NEC) CLASS 1, DIVISION 1, GROUP D—HAZARDOUS LOCATIONS  
UNDERWRITER'S LABORATORIES (U.L.) 508A—MOTOR CONTROL CENTERS AND U.L. 698A—INTRINSICALLY SAFE CONTROL CENTERS  
RECOMMENDED STANDARDS FOR WASTEWATER FACILITIES (1997 EDITION).

- PUMPS ARE RATED BY FACTORY MUTUAL FOR CLASS 1, DIVISION 1, GROUP D ATMOSPHERES AS REQUIRED BY NEC.
- THE CONTROL CENTER INCORPORATES INTRINSICALLY SAFE RELAYS AND IS LISTED TO UL 698A INTRINSICALLY SAFE FOR CLASS 1, DIVISION 1 ATMOSPHERES.
- THE CONDUIT PROVIDED, ALONG WITH CONDUIT GAS-SEAL-OFFS, ARE RATED FOR CLASS 1, DIVISION 1 LOCATIONS.
- THE WASTEWATER PUMPS AND THE CONTROL CENTER INCORPORATE A MECHANICAL SEAL FAILURE DETECTION AND NOTIFICATION SYSTEM.
- THE CONTROL CENTER INCLUDES EITHER A REMOTE TELEMETRY UNIT (RTU) OR A SELF-CHARGING, BACK-UP ALARM SYSTEM TO OPERATE ON POWER FAILURE.
- THE PUMP STATION OPERATES WITH A SCRUBBER SYSTEM TO CONTROL TOXIC GASES AND ODORS FOR COMPLIANCE TO F.A.C. 62-604.400.
- THE BOTTOM OF THE TOP RIM ELEVATION OF PUMP STATION MUST BE LOCATED AT A HIGHER ELEVATION THAN THE 25 YEAR FLOOD ELEVATION. THE LISTED 25 YEAR FLOOD ELEVATION PROVIDED BY SITE CIVIL ENGINEER.
- THE BOTTOM ELEVATION OF THE MOPS CONTROL CENTER MUST BE LOCATED AT A HIGHER ELEVATION THAN THE 100 YEAR FLOOD ELEVATION. THE LISTED 100 YEAR FLOOD ELEVATION PROVIDED BY THE SITE CIVIL ENGINEER.

MOPS ENGINEERING NOTES:  
AA. THE HORSEPOWER SHOWN ON THE SCHEDULE IS A MINIMUM HORSEPOWER REQUIREMENT BASED ON THE STATION'S DESIGN CRITERIA AND THE REQUIRE TORQUE. (LOWER RATED HORSEPOWER EQUIPMENT WILL NOT BE ACCEPTABLE.)  
BB. THESE ITEMS ARE NOT SUPPLIED BY A.E.S. WITH THE MOPS STATION.  
CC. INVERT ELEVATIONS BASED ON INSIDE BOTTOM OF PIPE.  
DD. THE MOPS CONTROL ASSEMBLY CONSISTS OF THE FOLLOWING: CONTROL CENTER DISCONNECT SWITCH, MOUNTING ASSEMBLY, ELECTRICAL CONDUITS, AND SEAL-OFF. THESE ITEMS MUST BE SUPPLIED AND INSTALLED BY THE MOPS PUMP STATION MANUFACTURER TO VALIDATE MOPS WARRANTY PROGRAM.  
EE. FOR STATIONS IN MAIN-DRAIN COUNTY, THE MOPS PUMP STATION IS SUPPLIED WITH A REMOTE TELEMETRY MONITORING UNIT AND A.E.S. MAINTENANCE SERVICE. THE R.T.U. ALLOWS FOR MONITORING OF LAB ALARM, HIGH ALARM, AND POWER FAILURE FOR CHARGER ELEMENTS. THE R.T.U. IS EQUIPPED WITH A BATTERY BACK UP AND SIZE TO BE COMPATIBLE WITH WASTEWATER PUMP STATION DESIGN AND EQUIPMENT SHOWN ON THIS DRAWING HAS BEEN RECOMMENDED. PERMITTED, AND CERTIFIED AS COMPLYING WITH ALL THE STATE OF FLORIDA DESIGN, ELECTRICAL, AND LOCAL REQUIREMENTS. ANY SUBSTITUTION FROM THIS DESIGN MAY REQUIRE NEW PERMITS, APPLICATION FEES, AND ENGINEERING SERVICES FOR RE-CERTIFICATION AND DESIGN REVIEW.

Project: VISTA GARDENS BALLROOM  
Prepared For: GATOR ENGINEERING ASSOCIATES, INC.  
11390 TEMPLE STREET, COOPER CITY, FLORIDA 33330

Page No. LS-1  
Project No. 1337  
Date: 07/02/19

**GATOR ENGINEERING ASSOCIATES, INC.**  
11390 TEMPLE STREET, COOPER CITY, FL 33330  
TEL: (954) 434-5905 FAX: (954) 434-5904  
CERTIFICATE OF AUTHORIZATION NUMBER 30330

SEAL  
DATE: 05/03/11  
BY: BOBINA BOBO-JACKSON, P.E.  
FL P.E. NO.: 38550

PROPOSED BALLROOM FOR:  
**VISTA GARDENS**  
5011 W HILLSBORO BLVD.  
COCONUT CREEK, FL

SHEET TITLE: LIFT STATION & DETAILS  
SCALE: AS SHOWN  
DRAWN BY: L.B. RAY  
CHECKED BY: R.B.L.  
APPROVED BY: R.B.L.