

**SHEET FOR REFERENCE ONLY**

SIGNAGE WILL BE SUBMITTED UNDER A SEPARATE PERMIT.

**EXISTING SIGNAGE SCHEDULE**

SIGNAGE LOCATION	QTY	COLOR	SIZE	INDIVIDUAL AREA	TOTAL AREA	SIGNAGE LOCATION	QTY	LIGHTED	COLOR	SIZE	INDIVIDUAL AREA	TOTAL AREA	
<b>FRONT SIGNAGE</b>													
WALMART	1	WHITE	4'-0"	132.62 SF	132.62 SF	Walmart	1	LED	WHITE	3'-6"	64.00 SF	64.00 SF	
SUPERCENTER	1	YELLOW	1'-6"	23.78 SF	23.78 SF	Spark	1	LED	YELLOW	5'-1"	23.20 SF	23.20 SF	
Regal Center	1	RED	2'-0"	32.17 SF	32.17 SF	Home & Pharmacy	1	N/A	WHITE	2'-0"	61.85 SF	61.85 SF	
<b>TOTAL FRONT SIGNAGE</b>					<b>178.57 SF</b>	<b>TOTAL FRONT SIGNAGE</b>					<b>149.05 SF</b>		
<b>TOTAL BUILDING SIGNAGE</b>						<b>178.57 SF</b>	<b>TOTAL BUILDING SIGNAGE</b>						<b>149.05 SF</b>

**NEW SIGNAGE SCHEDULE**

SIGNAGE LOCATION	QTY	COLOR	SIZE	INDIVIDUAL AREA	TOTAL AREA	SIGNAGE LOCATION	QTY	LIGHTED	COLOR	SIZE	INDIVIDUAL AREA	TOTAL AREA	
<b>FRONT SIGNAGE</b>													
WALMART	1	WHITE	4'-0"	132.62 SF	132.62 SF	Walmart	1	LED	WHITE	3'-6"	64.00 SF	64.00 SF	
SUPERCENTER	1	YELLOW	1'-6"	23.78 SF	23.78 SF	Spark	1	LED	YELLOW	5'-1"	23.20 SF	23.20 SF	
Regal Center	1	RED	2'-0"	32.17 SF	32.17 SF	Home & Pharmacy	1	N/A	WHITE	2'-0"	61.85 SF	61.85 SF	
<b>TOTAL FRONT SIGNAGE</b>					<b>178.57 SF</b>	<b>TOTAL FRONT SIGNAGE</b>					<b>149.05 SF</b>		
<b>TOTAL BUILDING SIGNAGE</b>						<b>178.57 SF</b>	<b>TOTAL BUILDING SIGNAGE</b>						<b>149.05 SF</b>

STIPULATION FOR REUSE  
 THE CONTRACTOR SHALL BE RESPONSIBLE FOR THE PROTECTION OF ALL EXISTING UTILITIES AND STRUCTURES. ANY DAMAGE TO EXISTING UTILITIES OR STRUCTURES SHALL BE REPAIRED AT THE CONTRACTOR'S EXPENSE. THE CONTRACTOR SHALL MAINTAIN ACCESS TO ALL ADJACENT PROPERTIES AT ALL TIMES. THE CONTRACTOR SHALL BE RESPONSIBLE FOR THE PROTECTION OF ALL EXISTING UTILITIES AND STRUCTURES. ANY DAMAGE TO EXISTING UTILITIES OR STRUCTURES SHALL BE REPAIRED AT THE CONTRACTOR'S EXPENSE. THE CONTRACTOR SHALL MAINTAIN ACCESS TO ALL ADJACENT PROPERTIES AT ALL TIMES.

CONSULTANTS

Walmart  
 COCONUT CREEK, FL  
 STORE NO. 1916  
 JOB NUMBER: 2120283 GENERAL REMODEL PROTO

ISSUE BLOCK

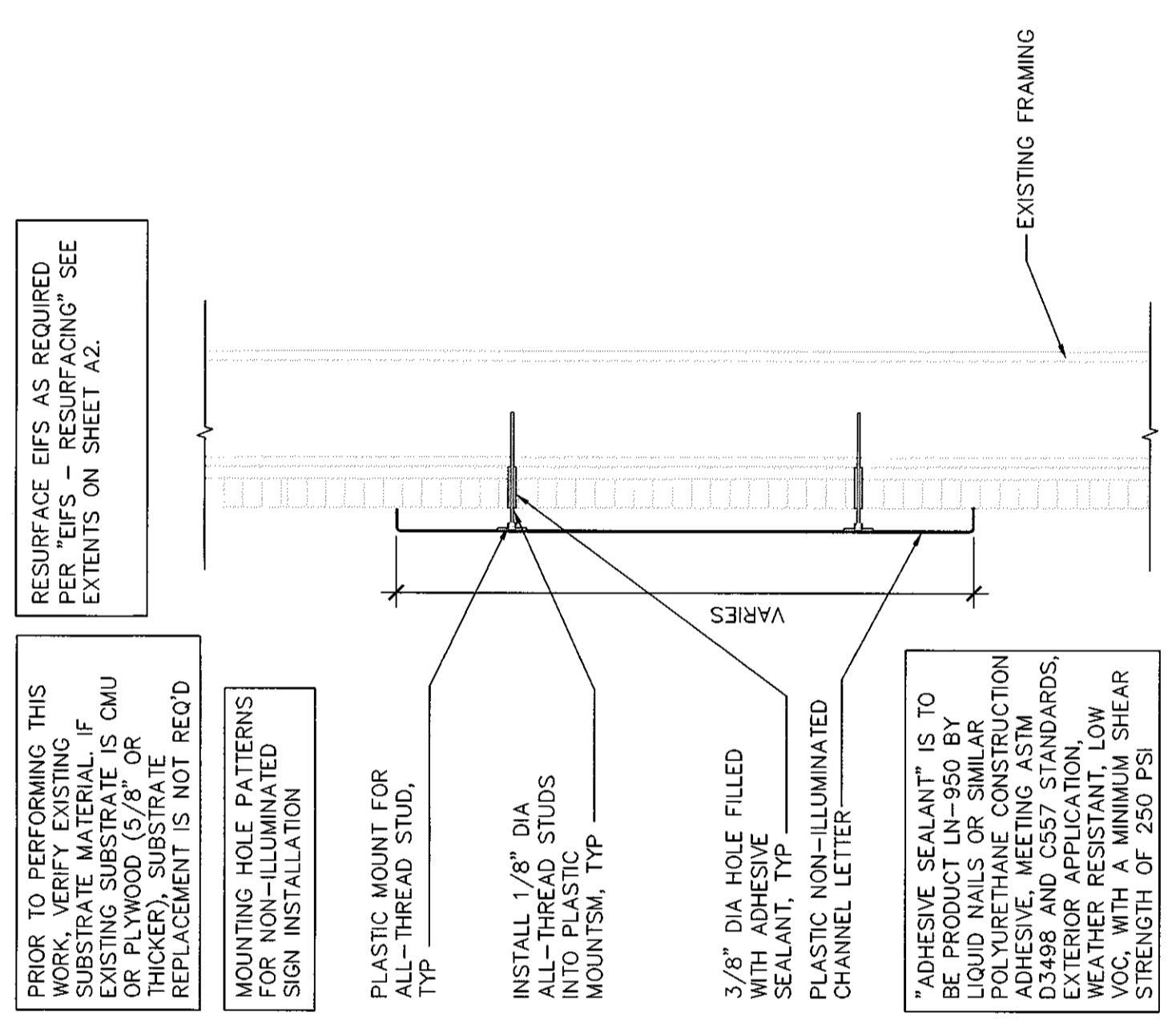
NO.	DATE	DESCRIPTION
1	01/07/13	

CHECKED BY: LP/BL  
 DRAWN BY: KB  
 PROTO: 176FLX  
 PHOTO CYCLE: 091412  
 DOCUMENT DATE: 10-25-12

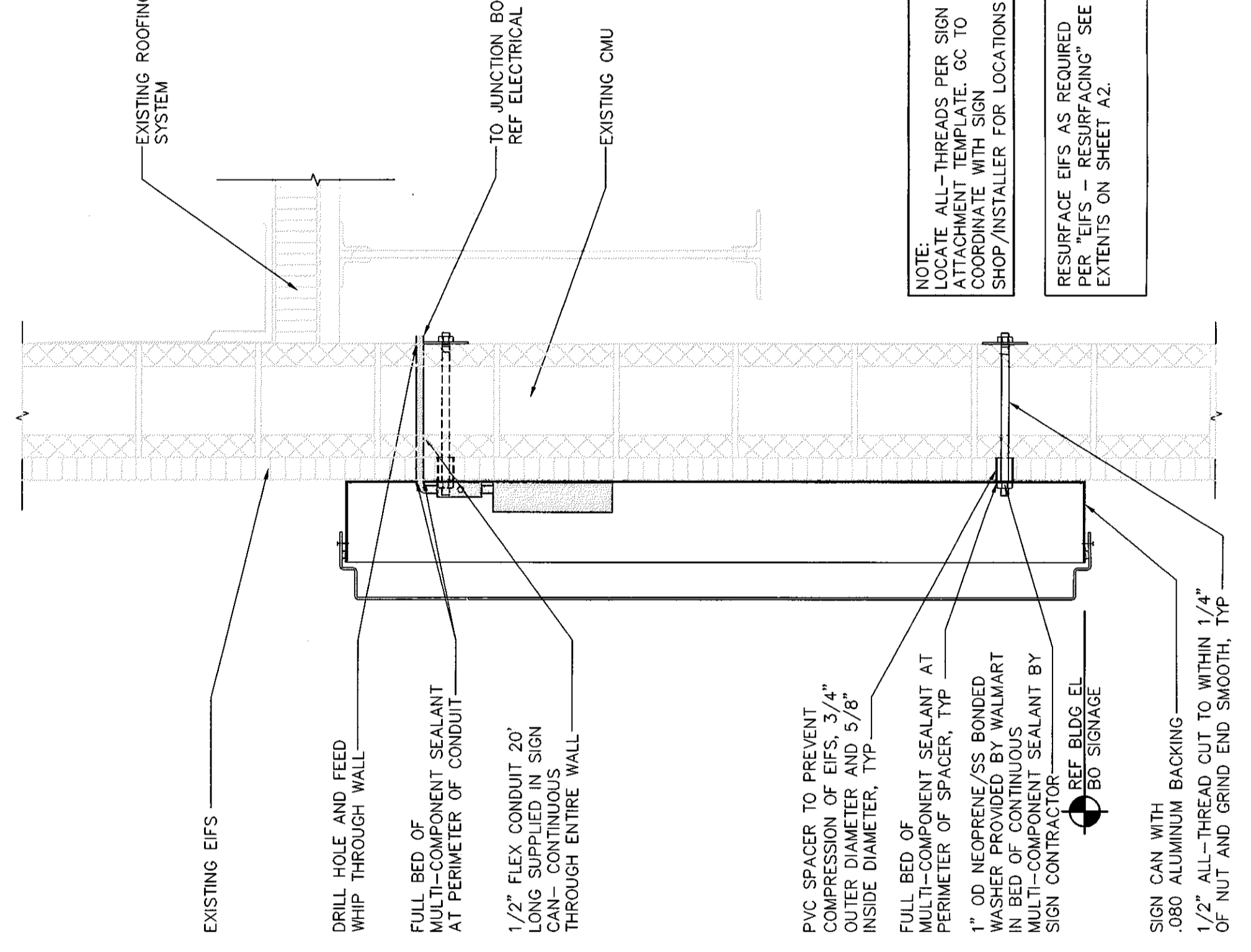
LEIGH DALL  
 1/7/13

SIGNAGE  
 DETAILS AND  
 SCHEDULES

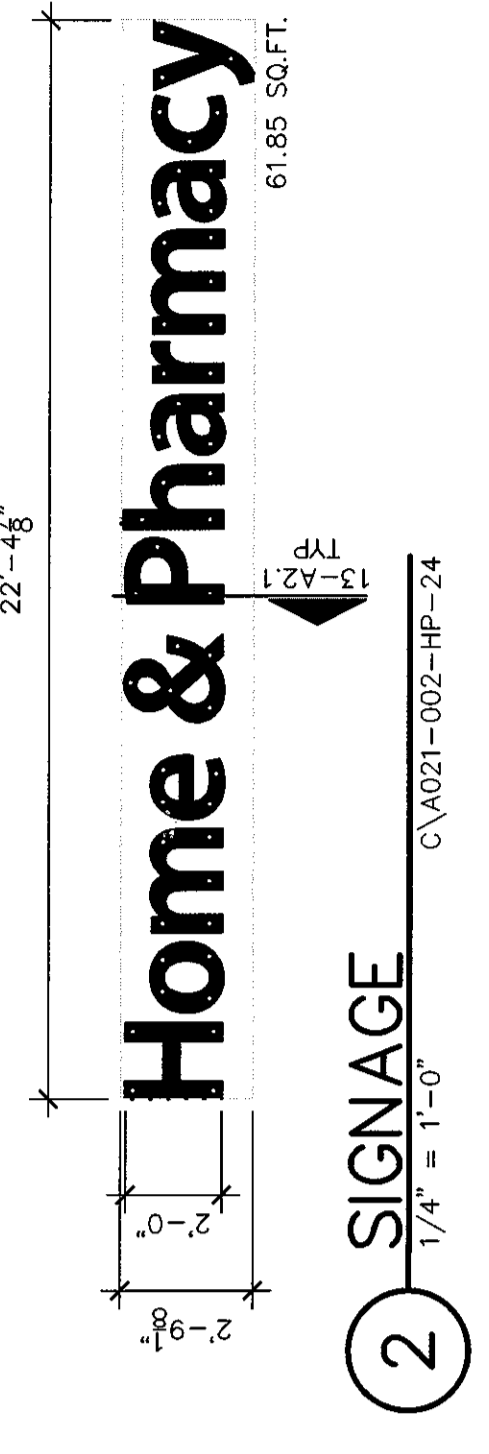
SHEET:  
 A2.1



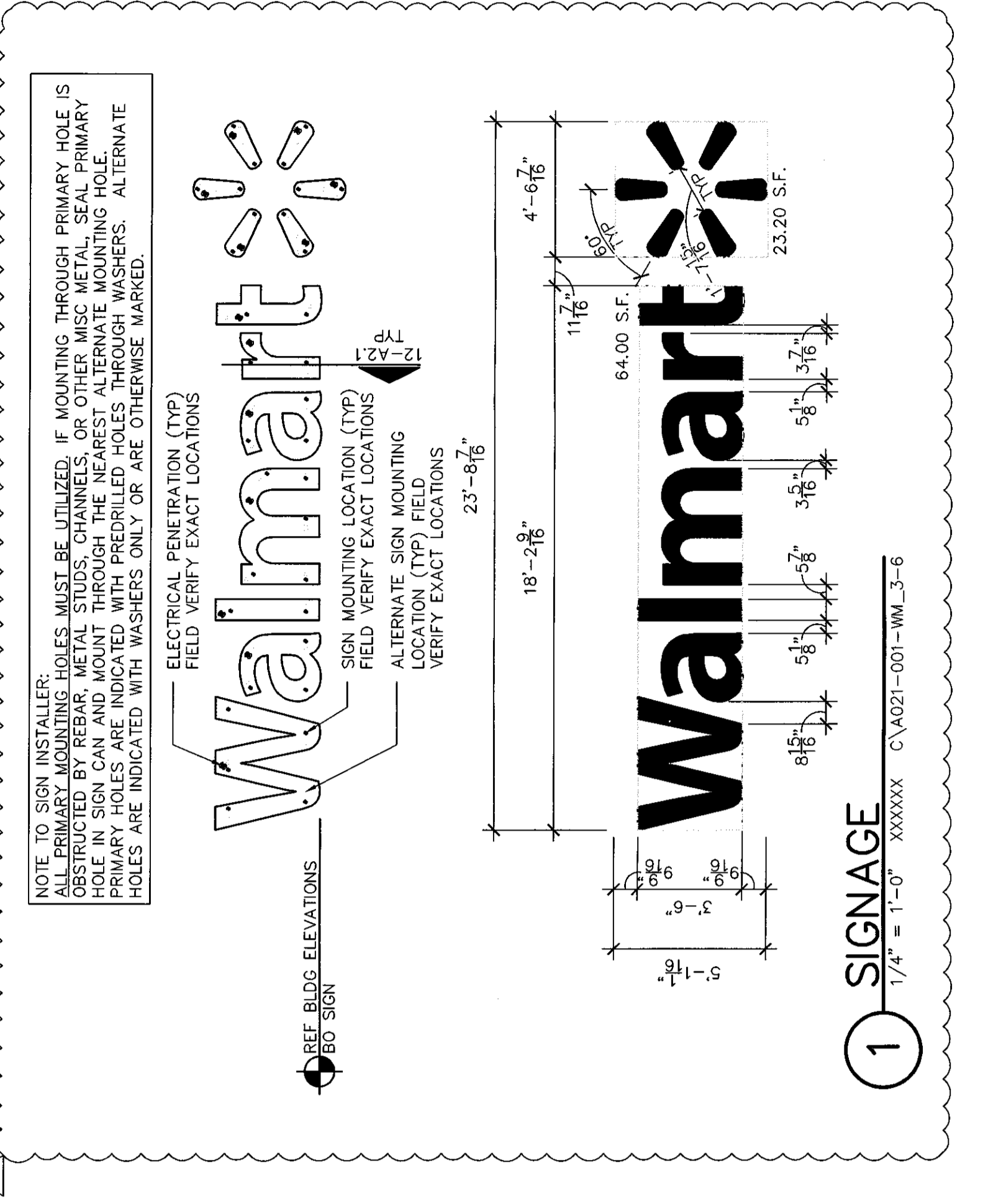
**13 SIGN ATTACHMENT AT EIFS AND METAL STUD WALL**  
 1 1/2" x 1"-0" 082411 c:\021b-013-efis



**6 SIGN ATTACHMENT AT EIFS AND CMU BELOW ROOF LINE**  
 1 1/2" x 1"-0" 082411 c:\021b-012-efiscmu



**2 SIGNAGE**  
 1/4" x 1"-0" c:\A021-002-HP-24



**1 SIGNAGE**  
 1/4" x 1"-0" XXXXX c:\A021-001-WM\_3-6

NOTE TO SIGN INSTALLER:  
 ALL PRIMARY MOUNTING HOLES MUST BE UTILIZED. IF MOUNTING THROUGH PRIMARY HOLE IS OBSTRUCTED BY REBAR, METAL STUDS, CHANNELS, OR OTHER MISC. METAL, SEAL PRIMARY HOLES WITH EPOXY. ALL MOUNTING HOLES MUST BE PREDRILLED THROUGH WASHERS. ALTERNATE PRIMARY HOLES ARE INDICATED WITH PREDRILLED HOLES THROUGH WASHERS. ALTERNATE HOLES ARE INDICATED WITH WASHERS ONLY OR ARE OTHERWISE MARKED.

ELECTRICAL PENETRATION (TYP)  
 FIELD VERIFY EXACT LOCATIONS

NOTE TO SIGN INSTALLER:  
 ALL PRIMARY MOUNTING HOLES MUST BE UTILIZED. IF MOUNTING THROUGH PRIMARY HOLE IS OBSTRUCTED BY REBAR, METAL STUDS, CHANNELS, OR OTHER MISC. METAL, SEAL PRIMARY HOLES WITH EPOXY. ALL MOUNTING HOLES MUST BE PREDRILLED THROUGH WASHERS. ALTERNATE PRIMARY HOLES ARE INDICATED WITH PREDRILLED HOLES THROUGH WASHERS. ALTERNATE HOLES ARE INDICATED WITH WASHERS ONLY OR ARE OTHERWISE MARKED.

NOTE TO SIGN INSTALLER:  
 ALL PRIMARY MOUNTING HOLES MUST BE UTILIZED. IF MOUNTING THROUGH PRIMARY HOLE IS OBSTRUCTED BY REBAR, METAL STUDS, CHANNELS, OR OTHER MISC. METAL, SEAL PRIMARY HOLES WITH EPOXY. ALL MOUNTING HOLES MUST BE PREDRILLED THROUGH WASHERS. ALTERNATE PRIMARY HOLES ARE INDICATED WITH PREDRILLED HOLES THROUGH WASHERS. ALTERNATE HOLES ARE INDICATED WITH WASHERS ONLY OR ARE OTHERWISE MARKED.