

# City of Coconut Creek

## InterOffice Memorandum

---

To: File (electronic site plan file)

Date: May 23 2012

From: Jim Hetzel  
Sustainable City Coordinator

Subject: Walgreens Hale Plat  
EV Charging Parking Space

---

The following minor adjustment to the approved Walgreens Hale Plat site plan has been accepted by the Development Review Committee.

### **Requested Change: Adjustment to parking to accommodate EV Charging Space**

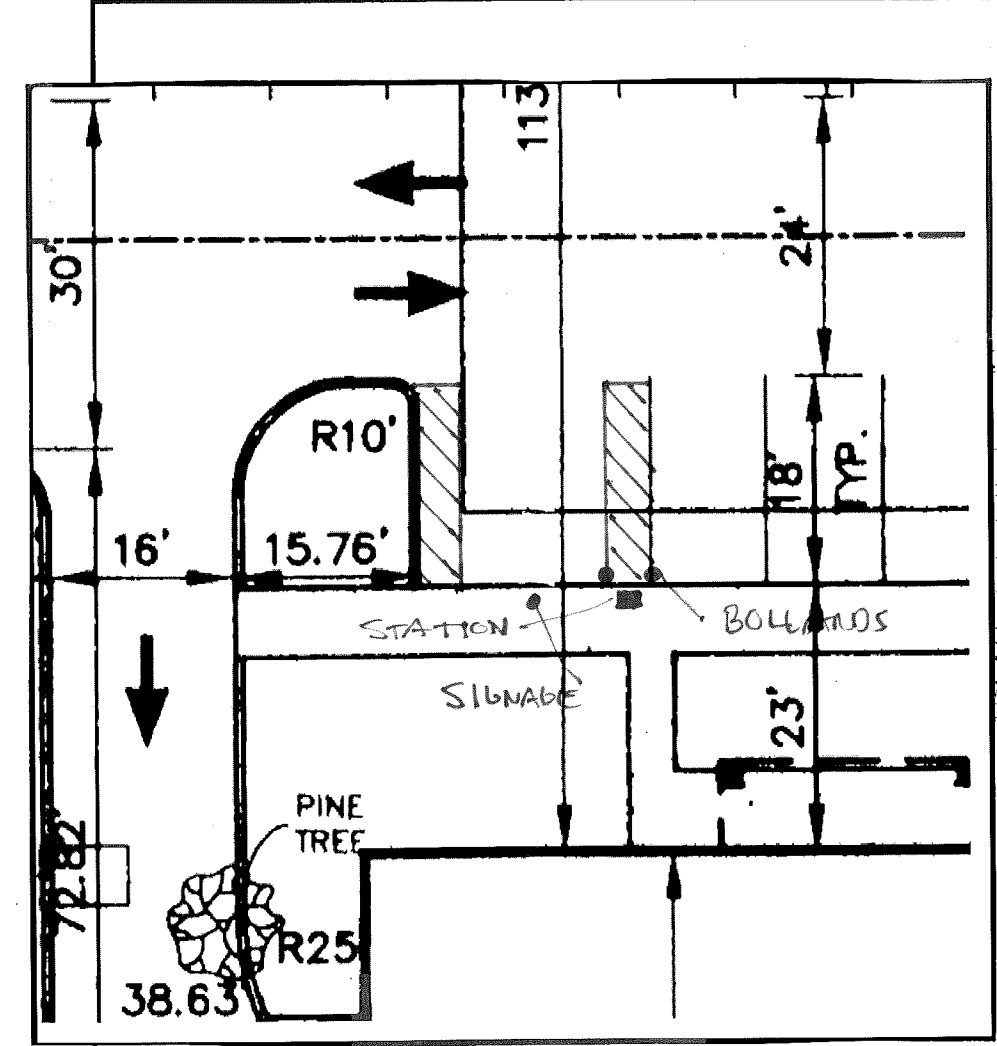
This memo shall serve as formal acceptance of the following:

- Modification to the parking on the north side of Walgreens
- Two spaces converted to one space
- Striping, bollards, EV charging station, and EV signage added

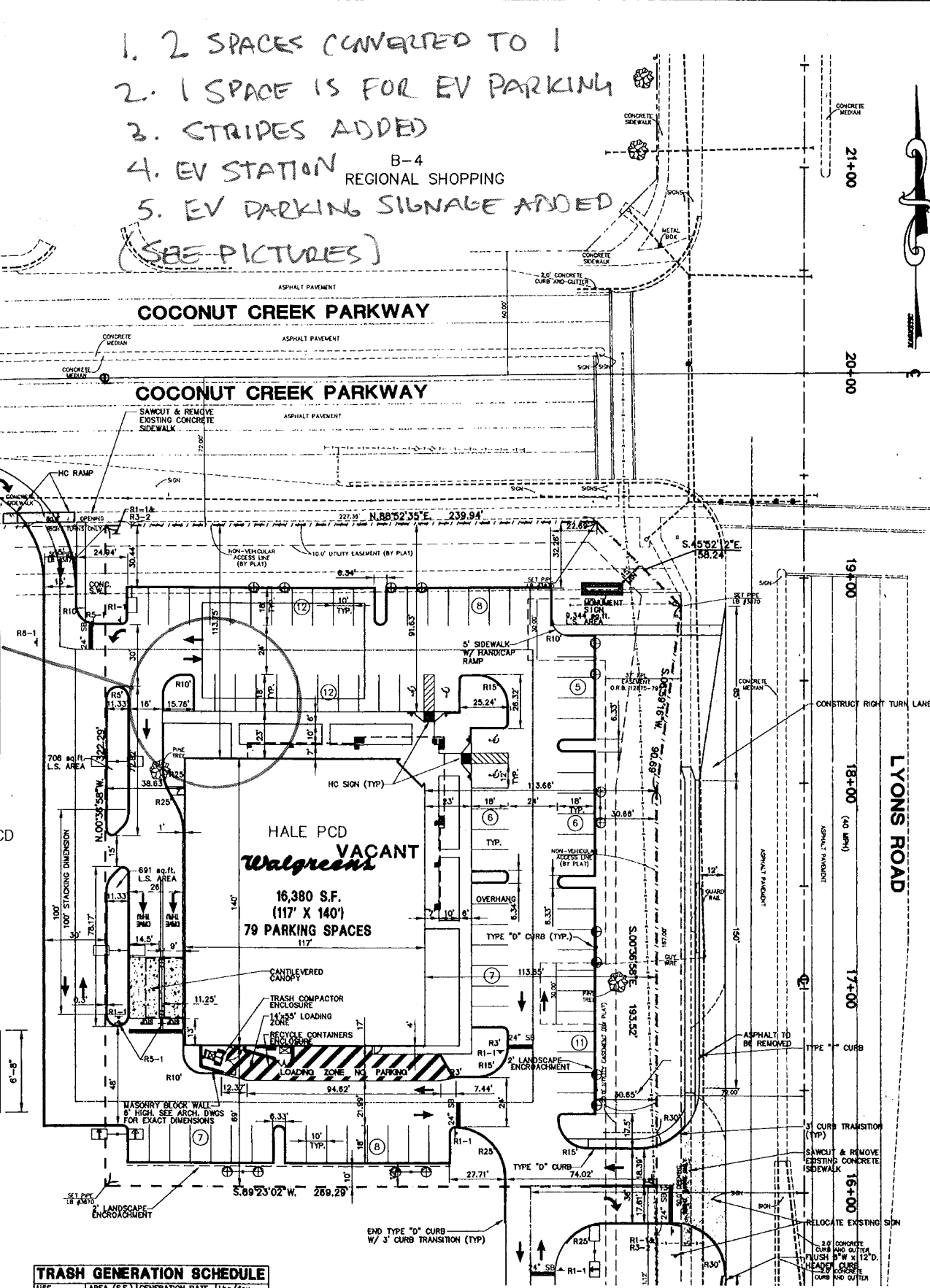
### **Summary of Requested Changes:**

The purpose of this modification was to accommodate an EV charging space at the Walgreens located at the corner of Coconut Creek Parkway and Lyons Road. The site plan has been marked with the exact location of the space and the features added to the site. Attached to this memo is modified plan and supporting photos.

This memo will be filed electronically on the network in the site plan folder.



1. 2 SPACES CONVERTED TO 1
  2. 1 SPACE IS FOR EV PARKING
  3. STRIPES ADDED
  4. EV STATION
  5. EV PARKING SIGNAGE ADDED
- (SEE PICTURES)



A-1  
AGRICULTURAL DISTRICT

**LEGEND**

- HANDICAP PARKING
- PROPOSED DRAINAGE INLET
- PROPOSED CURB
- PROPOSED CONCRETE PAVEMENT
- CENTER LINE OF ROAD
- RIGHT-OF-WAY
- EXISTING EDGE OF PAVEMENT
- TYP TYPICAL
- HC HANDICAP
- 10 10 PARKING SPACES
- S/W SIDEWALK
- S.B. STOP BAR
- PROPOSED LIGHT POLE

**SIGN LEGEND**

NO	TEXT OR SYMBOL	SIZE
R1-1	STOP	30" x 30"
R3-1	NO RIGHT TURN	24" x 24"
R3-2	NO LEFT TURN	24" x 24"
R3-7	LEFT LANE MUST TURN LEFT	30" x 30"
R5-1	DO NOT ENTER	30" x 30"
R6-1	ONE WAY	36" x 12"

ALL SIGNS SHALL CONFORM TO THE MANUAL ON UNIFORM TRAFFIC CONTROL DEVICES.

**STRIPING NOTES:**

- TYPICAL PARKING SPACE SHALL BE STRIPED WITH A 4" WHITE STRIPE.
- SEE DETAILS FOR TYPICAL AND HANDICAP PAVEMENT MARKING LAYOUT.

A-1  
AGRICULTURAL DISTRICT

**PROPOSED CONSTRUCTION NOTES:**

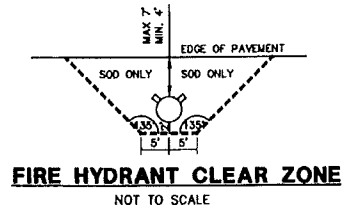
1. ALL CURB RADII TO BE 3 FEET UNLESS OTHERWISE NOTED AND REFER TO FACE OF CURB.
2. ALL DIMENSIONS SHOWN ARE TO THE FACE OF CURB, UNLESS OTHERWISE NOTED.
3. CONCRETE SIDEWALK RAMP SHALL BE INSTALLED ACCORDING TO F.D.O.T. INDEX 304 OR A.D.A. STANDARDS, WHICHEVER IS MORE RESTRICTIVE.

**PROPOSED STAKEOUT NOTES**

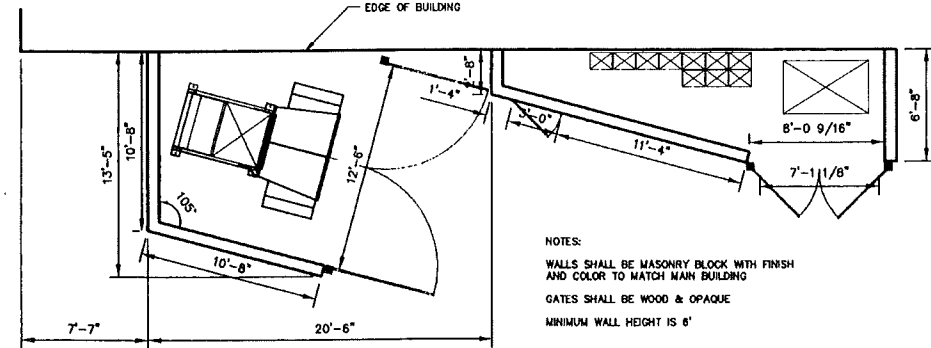
1. ALL PARKING AND BUILDING STRUCTURES ARE PARALLEL TO THE EAST PROPERTY LINE (S 00°30'58" E)

**CONSTRUCTION SCHEDULE**

PROPOSED STARTING DATE	1/99
PROPOSED COMPLETION DATE	7/99



Requirements apply to fire hydrants, Slowness connections and any other fire equipment for utilizing fire hose, on public or private property.  
By the authority of the South Florida Fire Prevention Code Section 5211.2.  
The diagram below shall appear on all landscape and engineering plans prior to approval.  
The clear zone shall be designed and kept free of landscape (except sod), mailboxes, parking, lamp posts and all other OBJECTS  
Exceptions: Other fire fighting equipment, or traffic posts to protect fire-fighting equipment.



**TRASH COMPACTOR DETAIL**

**TRASH GENERATION SCHEDULE**

USE	AREA (S.F.)	GENERATION RATE (Lbs/Day)
COMMERCIAL	16,380	4lbs/100 S.F./day 655

JUL 0 1999  
 ISSUED FOR CONSTRUCTION: MUST BE USED IN CONJUNCTION WITH THE CITY OF ORLANDO, FLORIDA, STANDARD SPECIFICATIONS FOR ROAD AND SIDEWALK CONSTRUCTION, 1997 EDITION, WITH THE CITY OF ORLANDO, FLORIDA, STANDARD SPECIFICATIONS FOR TRAFFIC CONTROL DEVICES, 1997 EDITION.  
 ISSUED FOR RECORD: FOR REVIEW ONLY  
 PRELIMINARY  
 COCONUT CREEK PKWY/LYONS AVE WAGLENS CITY OF COCONUT CREEK, FLORIDA  
 BARCLAY GROUP  
 A/E/C ENGINEERING, INC.  
 7675 Dr. Phillips Blvd., Suite 245  
 Orlando, Florida 32819  
 (407) 248-0000 Fax (407) 246-0054  
 2nd Floor  
 Traffic Engineers - Planners  
 Environmental Engineers  
 Zoning: urbanmediumdensity  
 PROJECT NO. 007-030  
 DATE 11/19/98  
 DRAWN BY: HLG  
 CHECKED BY: JEM  
 SCALE: 1"=30'  
 PROJECT NAME: COCONUT CREEK PKWY/LYONS AVE WAGLENS CITY OF COCONUT CREEK, FLORIDA  
 SHEET NO. C-2A





