

EX. TREE DISPOSITION CHART (only those requested to be removed/relocated in phase II area)										
TREE #	BOTANICAL NAME	COMMON NAME	HEIGHT (FT)	SPREAD (FT)	CANOPY (SF)	DBH (IN)	RATING %	RELOCATE	REMOVE	REMARKS
1	Sabal palmetto	CABBAGE PALM	15' CT	10	78.5	12	100	1		relocated
2	Sabal palmetto	CABBAGE PALM	15' CT	10	78.5	12	100	1		relocated
3	Washingtonia robusta	WASHINGTONIA PALM	38' CT	10	78.5	10	85		1	117.8
4	Washingtonia robusta	WASHINGTONIA PALM	38' CT	10	78.5	10	85		1	117.8
5	Washingtonia robusta	WASHINGTONIA PALM	38' CT	10	78.5	10	85		1	117.8
6	Washingtonia robusta	WASHINGTONIA PALM	38' CT	10	78.5	10	85		1	117.8
7	Washingtonia robusta	WASHINGTONIA PALM	38' CT	10	78.5	10	85		1	117.8
8	Sabal palmetto	CABBAGE PALM	15' CT	10	78.5	12	100	1		relocated
9	Sabal palmetto	CABBAGE PALM	15' CT	10	78.5	12	100	1		relocated
9a	Sabal palmetto	CABBAGE PALM	15' CT	10	78.5	12	100	1		relocated
10	Quercus virginiana	LIVE OAK	30	25	400.9	12	90		1	736.4
11	Quercus virginiana	LIVE OAK	20	15	176.7	5	75		1	265.1
12	Quercus laevis	LAUREL OAK	28	20	314.2	10	70		1	471.3
13	Quercus virginiana	LIVE OAK	38	30	706.8	22	100		1	1060.2
14	Tamarind spp.	TAMARIND	30	30	314.2	12	60		1	471.3
15	Tamarind spp.	TAMARIND	35	25	400.9	12	40		1	736.4
16	Sabal palmetto	CABBAGE PALM	8' CT		78.5	12	100	1		(117.8) YOUNG VOLUNTEER

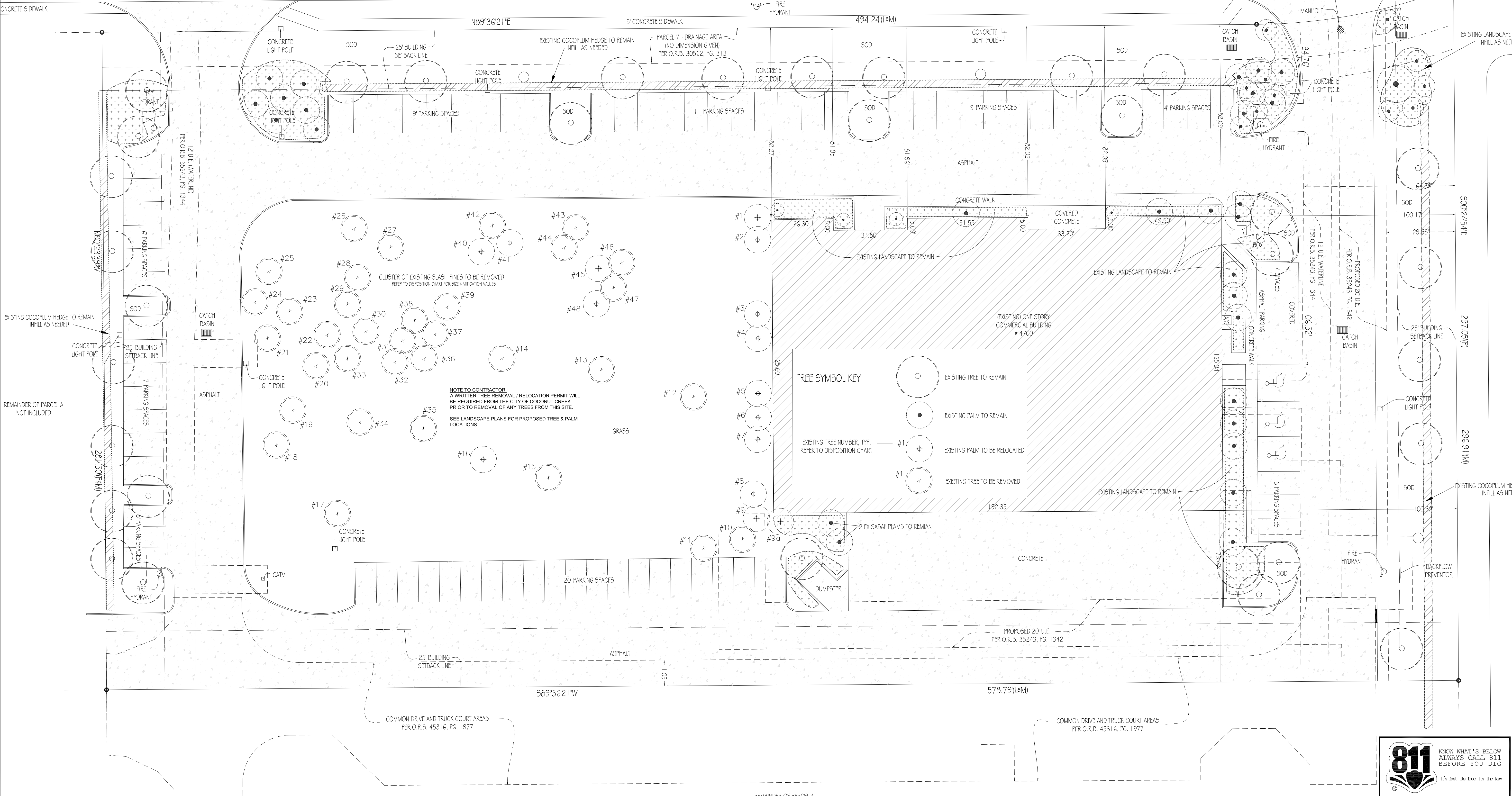
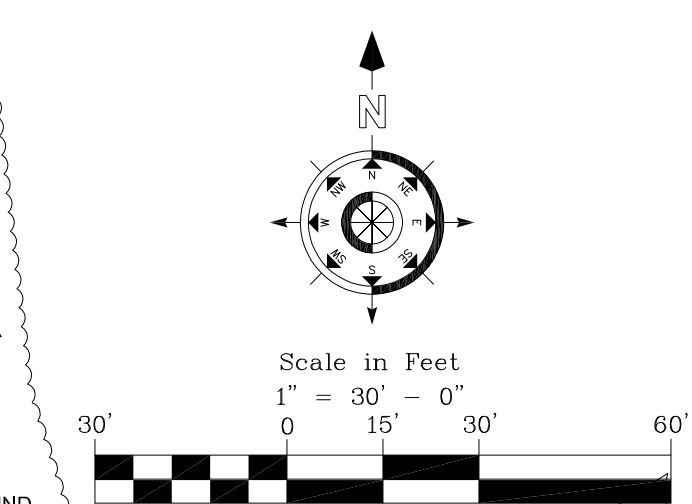
EX. TREE DISPOSITION CHART (only those requested to be removed / relocated in phase II area)										
TREE #	BOTANICAL NAME	COMMON NAME	HEIGHT (FT)	SPREAD (FT)	CANOPY (SF)	DBH (IN)	RATING %	RELOCATE	REMOVE	REMARKS
17	Tamarind spp.	TAMARIND	25	30	706.8	8-10	30		1	1060.2
18	Pinus elliotii	SLASH PINE	40+	18	254.5	8"-10"	75		1	381.8
19	Pinus elliotii	SLASH PINE	40+	22	380.1	8"-10"	75		1	570.2
20	Pinus elliotii	SLASH PINE	40+	18	254.5	8"-10"	75		1	381.8
21	Pinus elliotii	SLASH PINE	40+	8	50.3	8"-10"	70		1	75.5
22	Pinus elliotii	SLASH PINE	40+	10-6	106.8	8"-10"	70		1	160.2
23	Pinus elliotii	SLASH PINE	40+	10	78.5	8"-10"	70		1	117.8
24	Pinus elliotii	SLASH PINE	40+	8	50.3	8"-10"	70		1	75.5
25	Pinus elliotii	SLASH PINE	40+	20	314.2	8"-10"	75		1	471.3
26	Pinus elliotii	SLASH PINE	40+	15	176.7	8"-10"	70		1	265.1
27	Pinus elliotii	SLASH PINE	40+	8	28.3	8"-10"	70		1	42.5
28	Pinus elliotii	SLASH PINE	40+	24	452.4	8"-10"	80		1	676.6
29	Pinus elliotii	SLASH PINE	40+	-	-	8"-10"	0		1	-
30	Pinus elliotii	SLASH PINE	40+	12	113.1	8"-10"	70		1	169.7
31	Pinus elliotii	SLASH PINE	40+	8	50.3	8"-10"	70		1	75.5
32	Pinus elliotii	SLASH PINE	40+	10	78.5	8"-10"	70		1	117.8

EX. TREE DISPOSITION CHART (only those requested to be removed/relocated in phase II area)										
TREE #	BOTANICAL NAME	COMMON NAME	HEIGHT (FT)	SPREAD (FT)	CANOPY (SF)	DBH (IN)	RATING %	RELOCATE	REMOVE	REMARKS
33	Pinus elliotii	SLASH PINE	40+	6	28.3	8"-10"	70		1	42.5
34	Pinus elliotii	SLASH PINE	40+	14	153.9	8"-10"	70		1	230.9
35	Pinus elliotii	SLASH PINE	40+	20	314.2	8"-10"	75		1	471.3
36	Pinus elliotii	SLASH PINE	40+	14	153.9	8"-10"	70		1	230.9
37	Pinus elliotii	SLASH PINE	40+	13	132.7	8"-10"	70		1	191.1
38	Pinus elliotii	SLASH PINE	40+	14	153.9	8"-10"	70		1	230.9
39	Pinus elliotii	SLASH PINE	40+	13	132.7	8"-10"	70		1	191.1
40	Sabal palmetto	CABBAGE PALM	8' CT	10	78.5	12	100	1		relocated
41	Sabal palmetto	CABBAGE PALM	8' CT	10	78.5	12	100	1		relocated
42	Acacia salicifolia	EARLEAF ACACIA	40	20	314	10"	40		1*	FLIPPY CAT 1 - PROHIBITED SPECIES - 0 MITIGATION
43	Pinus elliotii	SLASH PINE	40+	14	153.9	8"-10"	70		1	230.9
44	Pinus elliotii	SLASH PINE	40+	12	113.1	8"-10"	70		1	169.7
45	Sabal palmetto	CABBAGE PALM	12' CT	10	78.5	12	100	1		relocated
46	Tamarind spp.	TAMARIND	40	30	706.8	8"	30		1	1060.2
47	Pinus elliotii	SLASH PINE	40+	24	452.4	14"	90		1	676.6
48	Sabal palmetto	CABBAGE PALM	10' CT	10	78.5	12	100	1		relocated
10 PALMS RELOCATED										
39 TREES & 5 PALMS										
12,717.3 SF										
TOTALS										

TREE REMOVAL REPLACEMENT SCHEDULE		
* REMOVED (SF)	REQUIRED (SF) [SF X 1.5]	PROVIDED (SF)
33 TREES	12,129.8	2350
5 PALMS	587.5	600
PROPOSED NEW TREE / PALM PLANTING (ON-SITE) Refer to sheets LP-2 & LP-2a		
CATEGORY 1 (12' HT min)	6 TREES @ 300 SF/TREE	1800 SF
CATEGORY 2 (8' HT min)	1 TREE @ 150 SF/TREE	150 SF
CATEGORY 3	4 TREES & 6 PALMS @ 100 SF/TREE	1200 SF
		2950 SF

NOTE: Remainder of mitigation not credited on-site with proposed replacement trees shall be paid into TREE TRUST FUND OR as deemed necessary per overall master site development & previous mitigation through owner agreement with city. (optional cash payment equal to the fair market value of the required replacement trees) paid by the applicant after recommendation from city staff that replacement of trees on-site pursuant to this subsection is not feasible)

ALL OTHER EXISTING TREES, PALMS & SHRUBS SHALL REMAIN UNLESS OTHERWISE NOTED: (REFER TO PREVIOUSLY APPROVED LANDSCAPE PLAN ON FILE WITH CITY)



1 1"=20'-0" EXISTING TREE DISPOSITION PLAN

LYONS TECH PARKWAY
20' ASPHALT ROADWAY

REVISION	DATE
1 CITY COMMENTS	6-4-18
2 CITY COMMENTS NO CHANGES THIS SHEET	8-21-18

LBLA, Inc.
Landscape Architecture

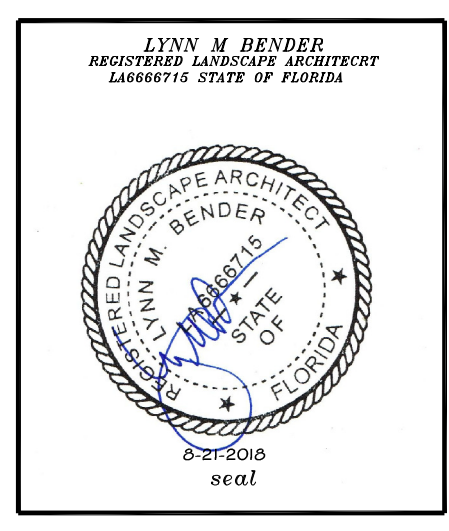
5610 Adair Way
Lake Worth, FL 33467
Phone: 561-644-3237
LbenderLarch@gmail.com
FL-LA666715

COPYRIGHT: 2018

The following drawings are instruments of service to LBLA, Inc. They are not products of design. All ideas, designs, arrangements and plans indicated or represented by these drawings are owned by and the property of the designer, and were created, evolved and developed for use on and in connection with this project. None of such ideas, designs, arrangements or plans shall be used by or disclosed to any person, firm or corporation without the written permission of LBLA, Inc.

Landscape Details & Specifications for

WILLIS LEASE
(AKA TRADEWINDS AVIATION PHASE II)
COCONUT CREEK, FLORIDA



PROJECT NO: 18-020	CADD ID: WILLIS LEASE LP
DRAWN BY: LMB	CHECKED BY: LMB
SCALE: 1" = 20'-0"	DATE: MARCH 26, 2018
SHEET: LP-1	
1 OF 4 SHEETS	

