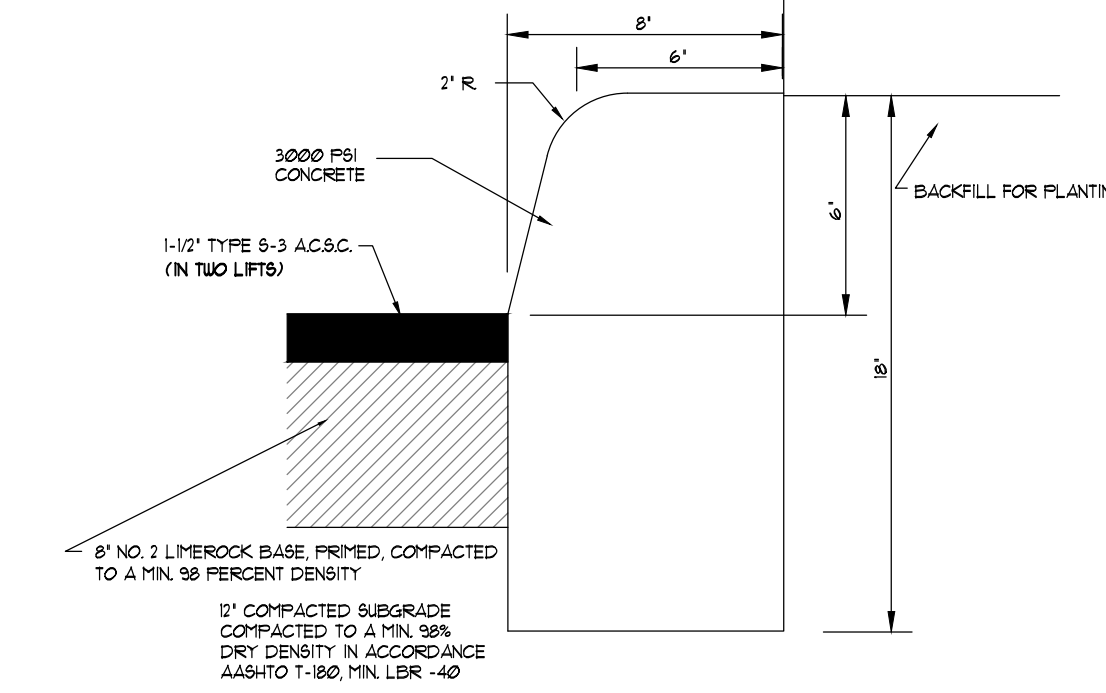
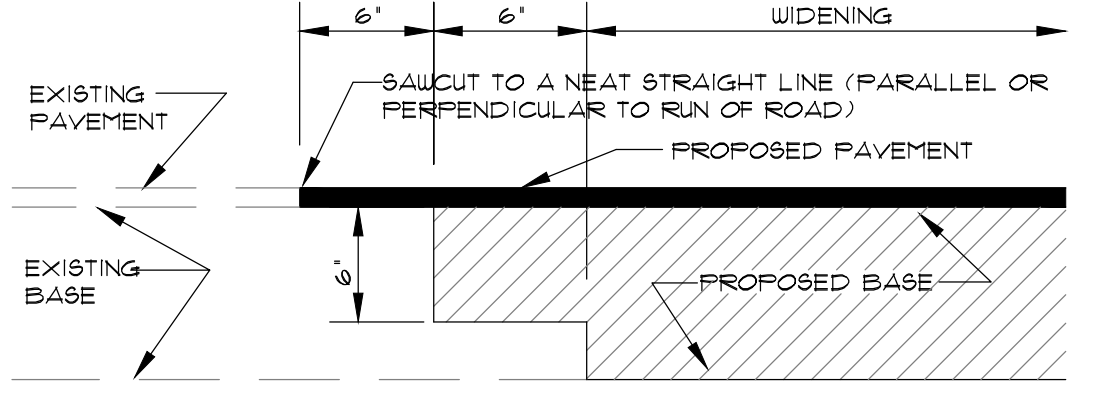


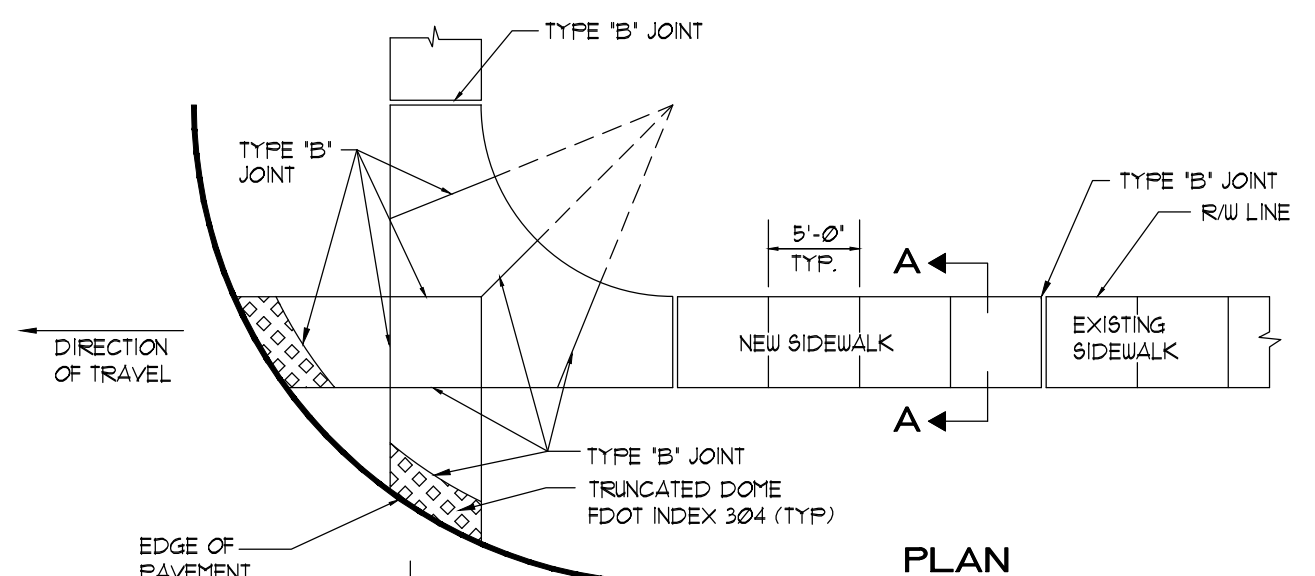
PAVEMENT SECTION



TYPICAL TYPE "D" CURBING



SAWCUT DETAIL



SECTION A-A

TYPE "B" SIDEWALK JOINTS

TYPE	LOCATION
B1	5'-0" CENTER TO CENTER ON SIDEWALKS

- NOTE:
1. CONCRETE TO BE CLASS-1, 3000 P.S.I.
 2. THE USE OF REINFORCEMENT IS NOT PERMITTED.
 3. SIDEWALK SLOPES SHALL MEET THE REQUIREMENTS OF THE "AMERICAN WITH DISABILITIES ACT".
 4. RAMPS SHALL BE PROVIDED AT ALL INTERSECTIONS IN ACCORDANCE WITH FOOT INDEX 304.
 5. THE VERTICAL DEVIATION FOR A NEW SIDEWALK SHALL NOT BE MORE THAN 1/2".
 6. THE VERTICAL DEVIATION FOR A NEW MAINTENANCE ACCESS STRUCTURE COVER SHALL NOT BE MORE THAN 1/4".
 7. SUBGRADE MATERIAL SHALL BE COMPACTED TO 100% OF MAXIMUM DENSITY, PER AASHTO T-99.
 8. STAMPED CONCRETE IS NOT ALLOWED IN LIEU OF TRUNCATED DOMES.
 9. SEE HIGHWAY CONSTRUCTION AND ENGINEERING DIVISION APPROVED PRODUCT LIST FOR ACCEPTABLE MATERIALS FOR TRUNCATED DOMES.

TYPICAL SIDEWALK DETAILS

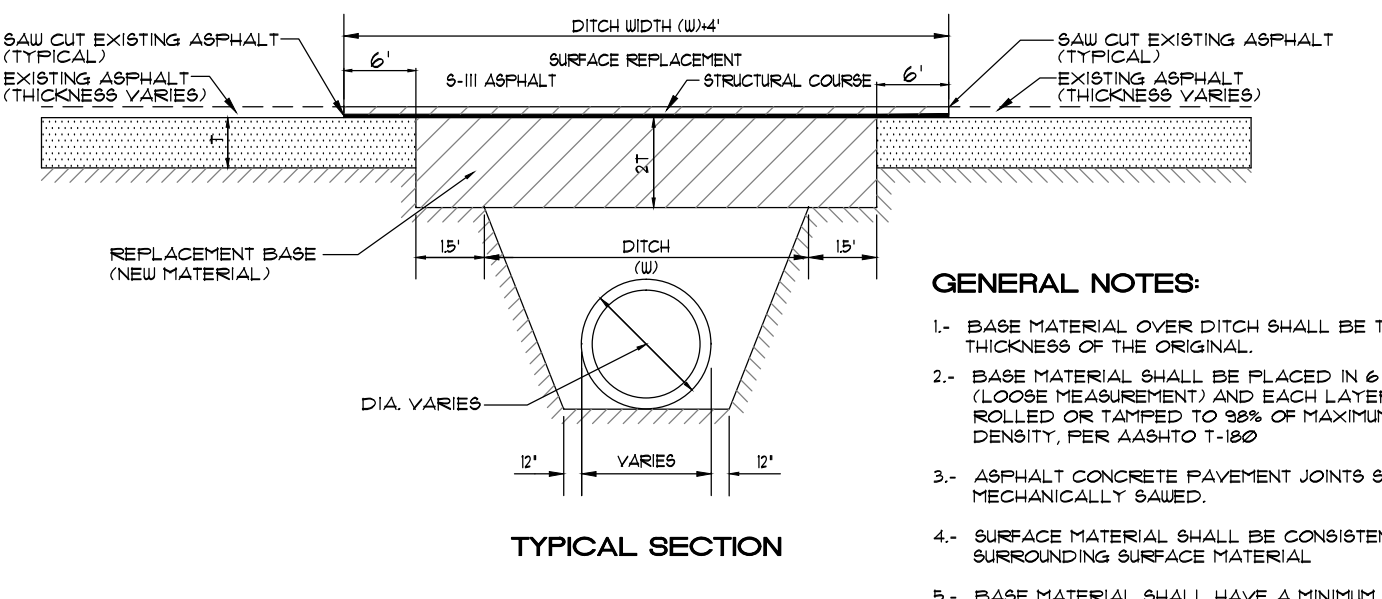
PAVING, MARKING + SIGNING NOTES:

1. ALL DESIGNS, CONSTRUCTIONS, STUDIES, ETC., SHALL CONFORM TO THE APPLICABLE SECTIONS OF THE FOLLOWING:
 - A. UNITED STATES DEPARTMENT OF TRANSPORTATION: "MANUAL ON UNIFORM TRAFFIC CONTROL DEVICES" (MUTCD).
 - B. STATE OF FLORIDA DEPARTMENT OF TRANSPORTATION:
 1. F.D.O.T. "ROADWAY & TRAFFIC DESIGN STANDARDS" (1994/7)
 2. "STANDARD SPECIFICATIONS (1991) OR LATEST REVISION"
2. ALL PAVEMENT MARKINGS SHALL BE THERMOPLASTIC WITH RAISED PAVEMENT MARKERS.
3. PAVEMENT MARKINGS SHALL CONFORM TO D.O.T. INDEX NO. 11346.
4. SIX INCH (6") EDGE LINES SHALL EXTEND 6' TO 10' BEYOND P.C.'S AT MEDIANS AND AT P.C.'S OF CURB RETURNS AT INTERSECTIONS.
5. PAVEMENT MARKINGS SHALL BE BID AS A 5UM ITEM.

- NOTES:
- ALL MATERIALS AND CONSTRUCTION WITHIN THE D.O.T. R/W SHALL CONFORM TO THE D.O.T. "ROADWAY AND TRAFFIC DESIGN STANDARDS" (LATEST EDITION) AND "STANDARD SPECIFICATIONS" (LATEST EDITION).
- THE CONTRACTOR MUST CALL B.C.T.E.D. AT 484-9600 AT LEAST 48 HOURS BEFORE ANY EXCAVATION WITHIN THE D.O.T. R/W TO DETERMINE THE LOCATION OF THE EXISTING TRAFFIC SIGNAL INTERCONNECT CABLE.
- AT THE END OF EACH WORK PERIOD, ANY DROP-OFF IN THE AREA ADJACENT TO THE TRAVEL WAY OF THE STATE ROAD SHALL BE BACKFILL IN ACCORDANCE WITH STANDARD INDEX 600 OR SHALL BE OTHERWISE PROTECTED WITH TEMPORARY BARRIER WALL AT THE CONTRACTOR'S EXPENSE.
- THE CONSULTANT'S ENGINEER RESPONSIBLE FOR CONSTRUCTION INSPECTION SHALL INSURE THAT THE NOT FOR THE PROJECT CONFORMS WITH THE STANDARD INDEX SERIES 600, APPLICABLE INDEX FOR WORK BEING PERFORMED.

PAVING + DRAINAGE NOTES:

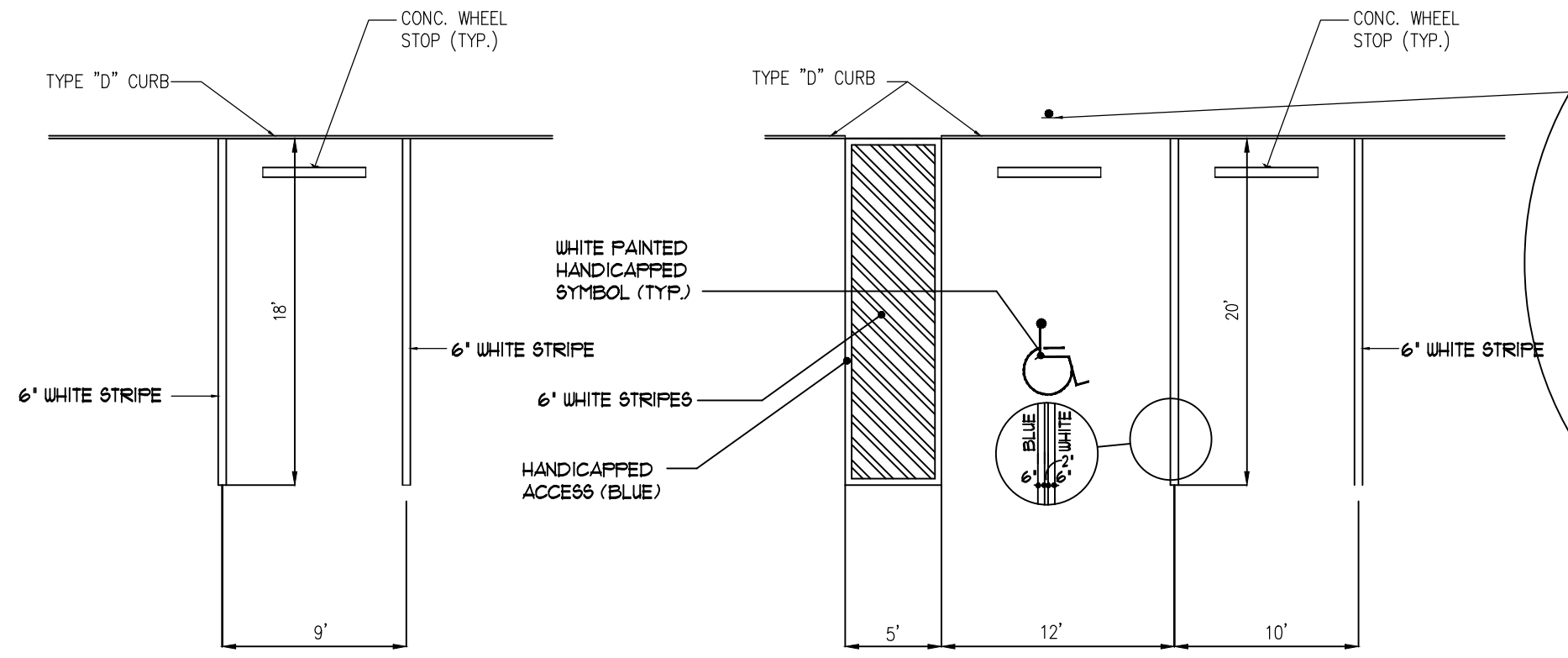
1. ALL MUCK UNDER THE PROPOSED DRIVEWAY AND PARKING AREAS SHALL BE REMOVED AND REPLACED WITH COMPACT ACCEPTABLE FILL IN ONE-FOOT LIFTS TO 98 PERCENT DENSITY.
2. ALL LABOR MATERIALS AND METHODS OF INSTALLATION SHALL BE IN STRICT ACCORDANCE WITH THE MINIMUM ENGINEERING AND CONSTRUCTION STANDARDS ADOPTED BY THE CITY OF COCONUT CREEK.
3. ALL UNDERGROUND UTILITIES AND DRAINAGE IS TO BE INSTALLED BEFORE SUBGRADE IS CONSTRUCTED.
4. ALL ELEVATIONS REFER TO N.A.V.D. OF (1988).
5. CONTRACTOR SHALL TAKE ALL NECESSARY PRECAUTIONS TO SAFEGUARD ALL EXISTING STRUCTURES AND UTILITIES, ANY DAMAGE DONE TO EXISTING UTILITIES SHALL BE REPAIRED BY THE CONTRACTOR AT NO EXPENSE TO THE SUBJECT UTILITY. CALL UNCLE, (1-800-432-4770) 48 HOURS BEFORE DIGGING.
6. ALL CONCRETE SHALL HAVE A MINIMUM COMPRESSIVE STRENGTH OF 3000 P.S.I. AT 28 DAYS.
7. CONTRACTOR SHALL VERIFY LOCATION OF EXISTING UNDERGROUND UTILITIES AND INFORM ENGINEER OF ANY DISCREPANCIES.
8. CONTRACTOR SHALL NOTIFY THE CITY OF COCONUT CREEK ENGINEERING DEPARTMENT AT LEAST 48 HOURS PRIOR TO COMMENCING CONSTRUCTION AND SETTING A PRE-CONSTRUCTION MEETING.
9. AS-BUILT DRAWINGS THAT SHOW TOP OF ROCK ELEVATIONS AND COMPLETED DRAINAGE INSTALLATION SHALL BE SUPPLIED TO THE CITY ENGINEER FOR APPROVAL PRIOR TO INSTALLATION OF WEARING SURFACE. AS-BUILT DRAWINGS SHALL BE CERTIFIED BY A PROFESSIONAL LAND SURVEYOR REGISTERED IN THE STATE OF FLORIDA.
10. REFER TO ARCHITECTURAL DRAWINGS FOR SPECIFICATIONS OF FILL MATERIAL UNDERNEATH BUILDING PADS.
11. STABILIZED SUBGRADE SHALL HAVE A LOAD BEARING RATIO (LBR) OF 40 AND SHALL BE COMPACTED TO 98% OF MAXIMUM DENSITY AS DETERMINED BY AASHTO T-180.
12. MIAMI LIMEROCK BASE COURSE SHALL CONFORM TO HAVE MINIMUM 10% OF CARBONATES AND LIGHT LIMIT 35, PLASTICITY 6, MINIMUM LBR OF 100 OR ACCEPTABLE F.D.O.T. PRODUCT APPROVAL.
13. ASPHALTIC CONCRETE SURFACE COURSE TYPE 8-3 SHALL CONFORM TO THE REQUIREMENTS OF SECTIONS 232-1 THROUGH 332-6 OF FLORIDA D.O.T. STANDARD SPECIFICATIONS. TO BE INSTALLED IN TWO LIFTS.
14. PRIME COAT AND TACK COAT OF BASE COURSES SHALL CONFORM TO THE REQUIREMENTS OF SECTIONS 300-1 THROUGH 300-7 OF FLORIDA D.O.T. STANDARD SPECIFICATIONS. PRIME COAT SHALL BE APPLIED AT A RATE OF 0.25 GALLONS PER SQUARE YARD UNLESS A VARIATION RATE IS APPROVED BY THE ENGINEER.
15. PRECAST CONCRETE MANHOLES AND CATCH BASINS SHALL MEET THE REQUIREMENTS OF A.S.T.M. SPECS C-478 AND 64T.
16. CONCRETE FOR PRECAST MANHOLES AND CATCH BASINS SHALL HAVE A MINIMUM COMPRESSIVE STRENGTH OF 3000 P.S.I. AT 28 DAYS.
17. REINFORCING STEEL FOR MANHOLES AND CATCH BASINS SHALL CONFORM TO A.S.T.M. SPECIFICATIONS A-615 AND A-305, LATEST REVISION.
18. ALL RE-BAR SPICES IN CONCRETE STRUCTURES SHALL HAVE A MINIMUM LAP OF 24 BAR DIAMETER.
19. ALL JOINTS IN CONCRETE STRUCTURES SHALL BE FINISHED WATERTIGHT.
20. ALL SPACES AROUND PIPING ENTERING OR LEAVING MANHOLES AND CATCH BASINS SHALL BE COMPLETELY FILLED WITH 2:1 CEMENT MORTAR.
21. REINFORCED CONCRETE PIPE (RCP) SHALL CONFORM TO THE REQUIREMENTS OF ASTM SPECIFICATION C-76, FOR CLASS III, WALL THICKNESS, 18" REINFORCED CONCRETE PIPE AND AS MODIFIED BY SECTION 941 OF FLORIDA D.O.T. STANDARD SPECIFICATION.
22. TYPE "F" CURB SHALL BE CONSTRUCTED OVER A 4-INCH LIMEROCK BASE PAD (98% DENSITY MINIMUM).
23. REMOVE ALL ORGANICS AND DELETERIOUS MATERIAL.



TYPICAL SECTION

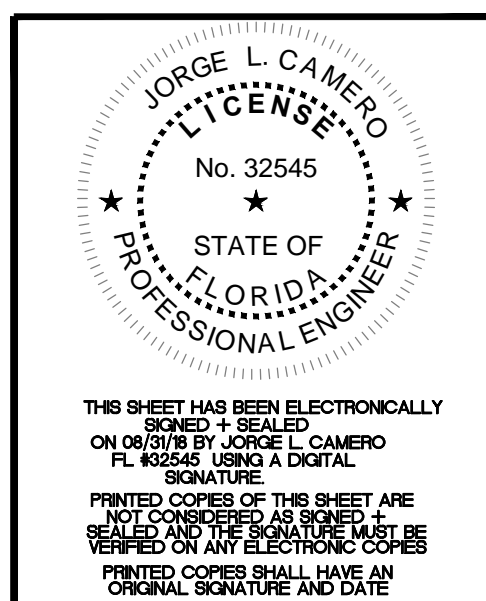
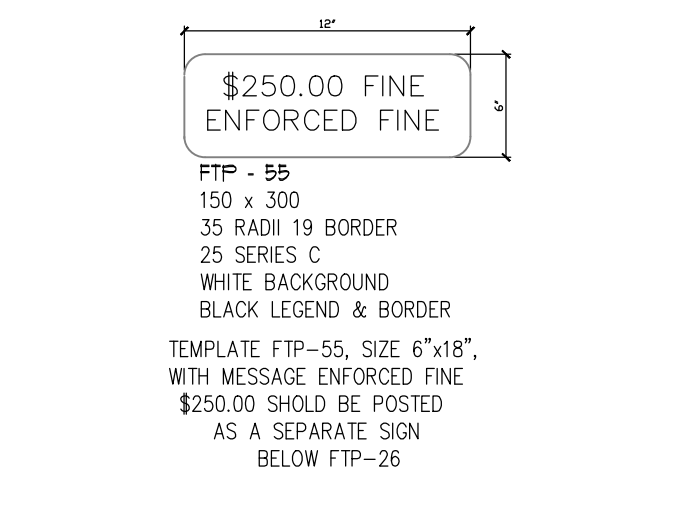
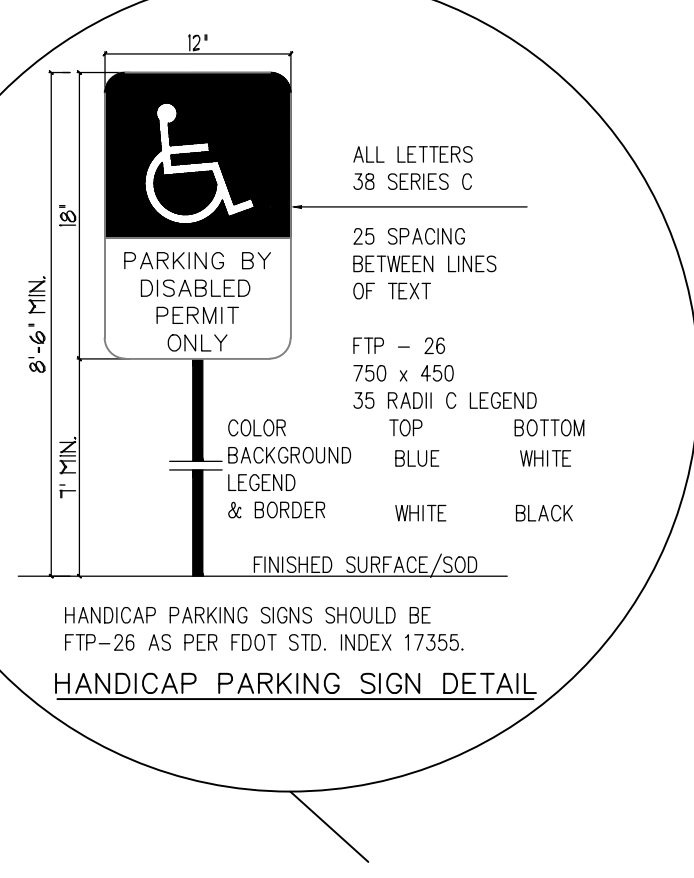
- GENERAL NOTES:**
1. BASE MATERIAL OVER DITCH SHALL BE TWICE THE THICKNESS OF THE ORIGINAL.
 2. BASE MATERIAL SHALL BE PLACED IN 6" MAXIMUM LAYERS (LOOSE MEASUREMENT) AND EACH LAYER THOROUGHLY ROLLED OR TAMPERED TO 98% OF MAXIMUM DENSITY, PER AASHTO T-180.
 3. ASPHALT CONCRETE PAVEMENT JOINTS SHALL BE MECHANICALLY SAUED.
 4. SURFACE MATERIAL SHALL BE CONSISTENT WITH THE SURROUNDING SURFACE MATERIAL.
 5. BASE MATERIAL SHALL HAVE A MINIMUM CARBONATE OF 10% (60% FOR LOCAL STREETS).
 6. SUBGRADE MATERIAL SHALL BE GRANULAR AND ANGULAR AND SHALL HAVE A MINIMUM LBR OF 40.
 7. IF THE DITCH IS FILLED TEMPORARILY, IT SHALL COVERED WITH A 2" THICK ASPHALTIC CONCRETE PATCH TO KEEP THE FILL MATERIAL FROM REVELING, UNTIL REPLACED WITH A PERMANENT PATCH.

RESTORATION OF ROADWAY CUT FOR UTILITY CROSSING



- NOTE:
- SIGNING AND MARKING FOR HANDICAP PARKING STALLS MUST BE IN ACCORDANCE WITH FOOT STANDARD INDEX 17346.
- ALL PAINT SHALL BE REFLECTORIZED PAINT
1. HANDICAPPED SIGN WILL BE OF F.D.O.T. (BLUE) COLOR.
 2. PAVEMENT BORDER LINES (ONE ON EACH SIDE) OF THE HANDICAP SPACE WILL BE OF A BLUE COLOR OF A QUALITY EQUIVALENT TO SUPER STRIPE TRAFFIC PAINT SOLD BY FOX VALLEY SYSTEMS, INC. OF CARY, ILLINOIS, PHONE 1-800-323-4770. SHALL BE STRIPED ON THE WEARING SURFACE OF EACH SPACE DESIGNED FOR THE HANDICAP PARKING SPACE. ORDINANCE NO. 1550.
 3. ALL LETTERS IN MIDDLE PORTION OF SIGN ARE 1.5" SERIES AT 1.5" SPAONG.
 4. ALL LETTERS IN BOTTOM PORTION OF SIGN ARE 1" SERIES AT 1" SPAONG.
 5. MINIMUM FINE SHALL BE \$250.00 PER ORDINANCE 2149.

TYPICAL PARKING STALL DETAILS



CAMERO + ASSOCIATES, INC.

CIVIL ENGINEERS
CAMERO + ASSOCIATES, INC.
JORGE L. CAMERO, P.E.
1400 SW 50th TERR. SUITE 204
(305) 665-7607

PLANNERS
EB NO. 0004219
FLA. REG. NO. 32545
MIAMI, FL 33155
FAX (305) 665-8488

OUR JOB NO. 18-112

T&T Design and Development Inc.
 6810 Lyons Technology Circle
 Suite 140, Coconut Creek, FL
 Phone (954) 732-9199
 Fax (954) 712-9158
 info@ttdesign.com
 ttdesign@ard.com
 www.ttdesign.com

WILLIS LEASE expansion
 4700 LYONS TECHNOLOGY PARKWAY, COCONUT CREEK, FL. 33073
 Butters Construction & Development
 6820 Lyons Technology Circle, Suite 100 Coconut Creek, FL 33073
 Phone: 954-570-8111 - Fax: 954-570-8844

SHEET TITLE: PAVING AND DRAINAGE DETAIL
 DRAWING NO. C-3
 JORGE L. CAMERO, P.E. 32545

REV. DATE: 05-27-2018
 ISSUE FOR: DRG SUBMITTAL

THIS SHEET HAS BEEN ELECTRONICALLY SIGNED BY JORGE L. CAMERO FL REG.# 32545 USING A DIGITAL SIGNATURE.
 PRINTED COPIES OF THIS SHEET ARE VALID AND THE SIGNATURE MUST BE VERIFIED ON ANY ELECTRONIC COPIES.
 PRINTED COPIES SHALL HAVE AN ORIGINAL SIGNATURE AND DATE.