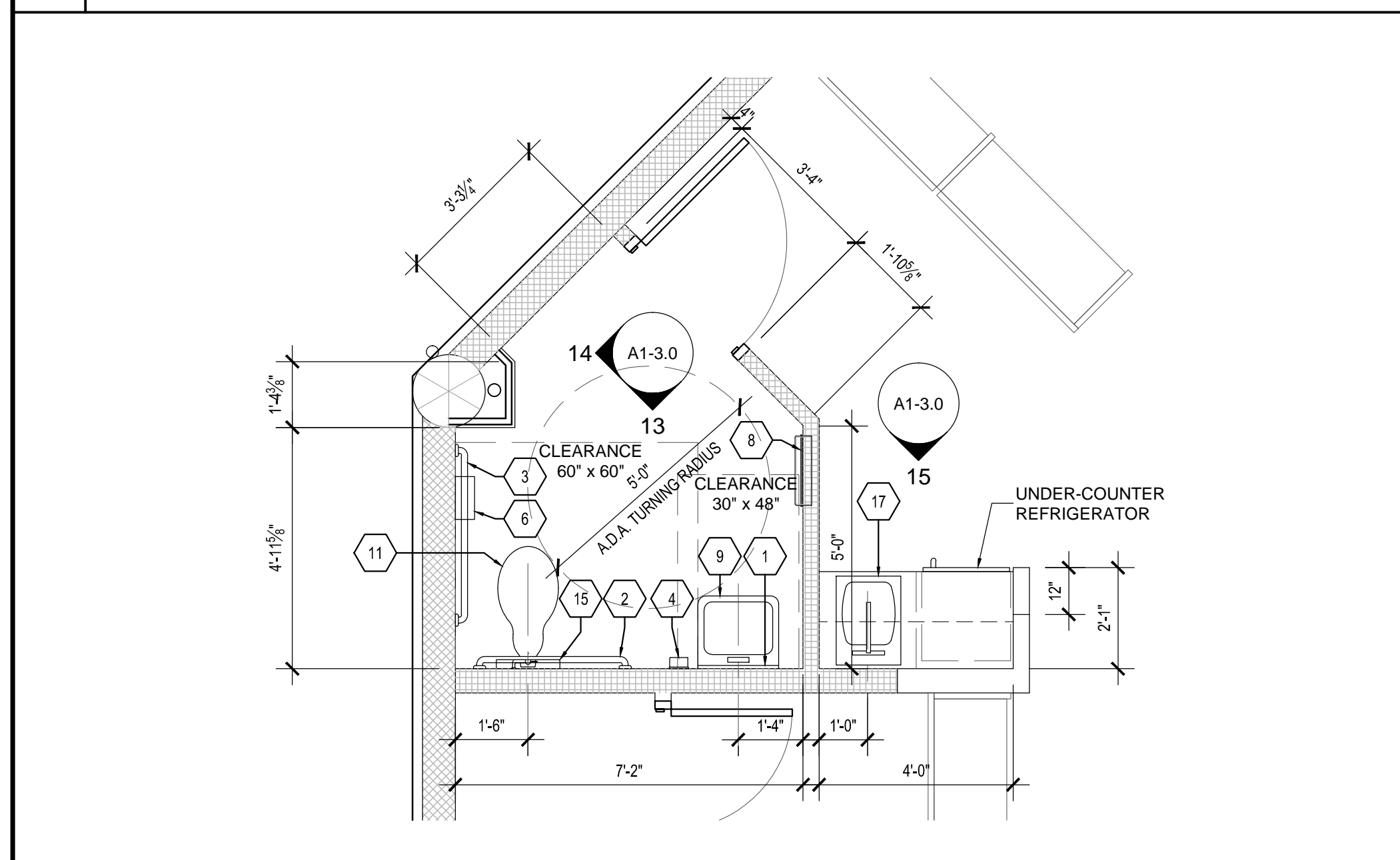
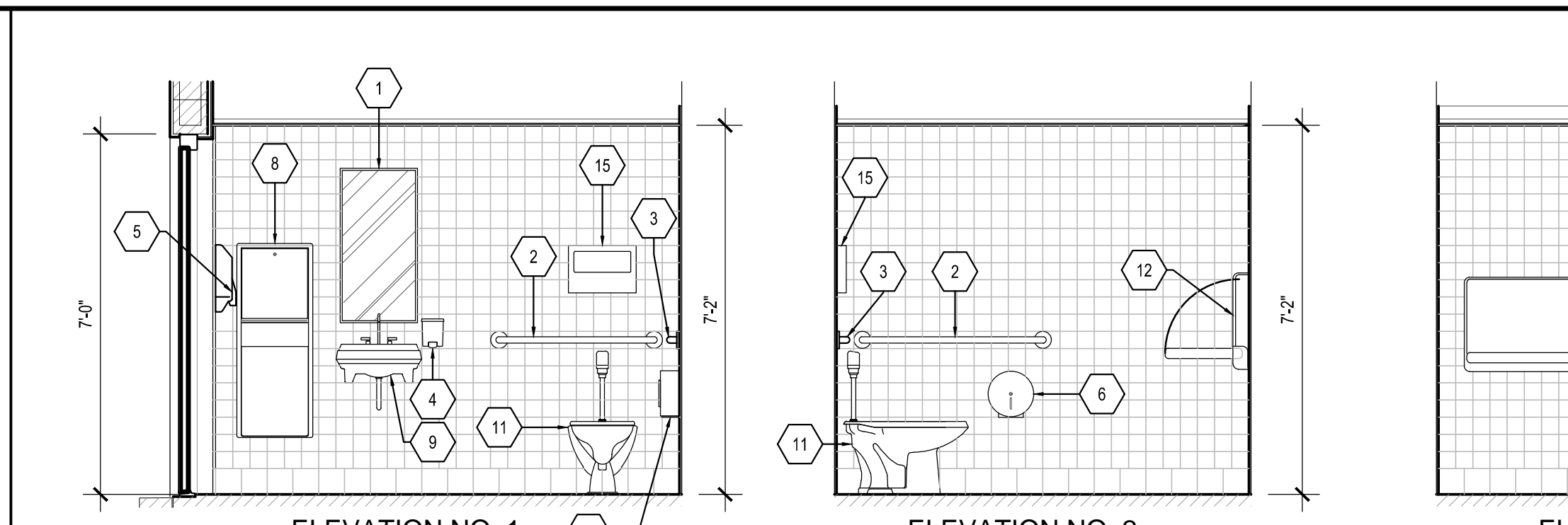


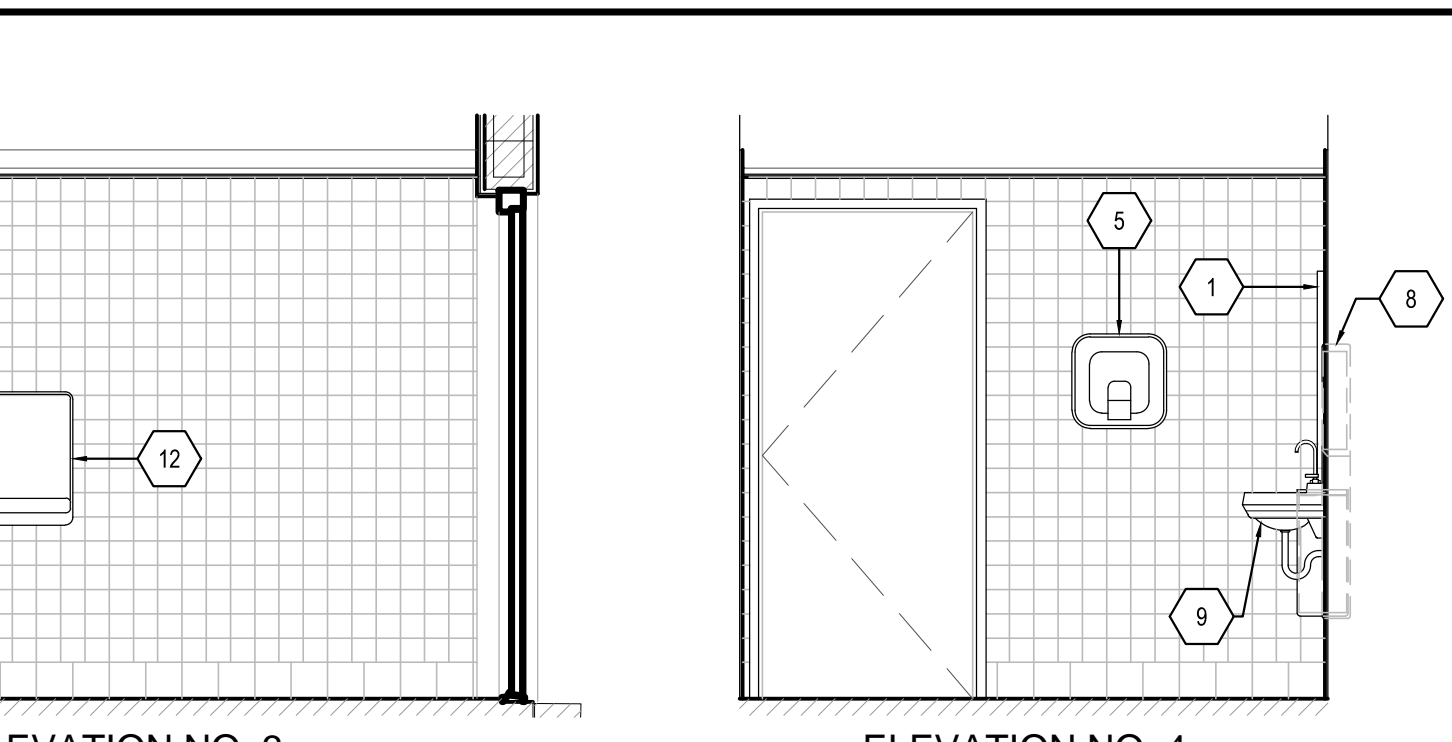
**1 ENLARGED FIRST FLOOR RESTROOMS & JANITOR**  
SCALE : 3/8" = 1'-0"



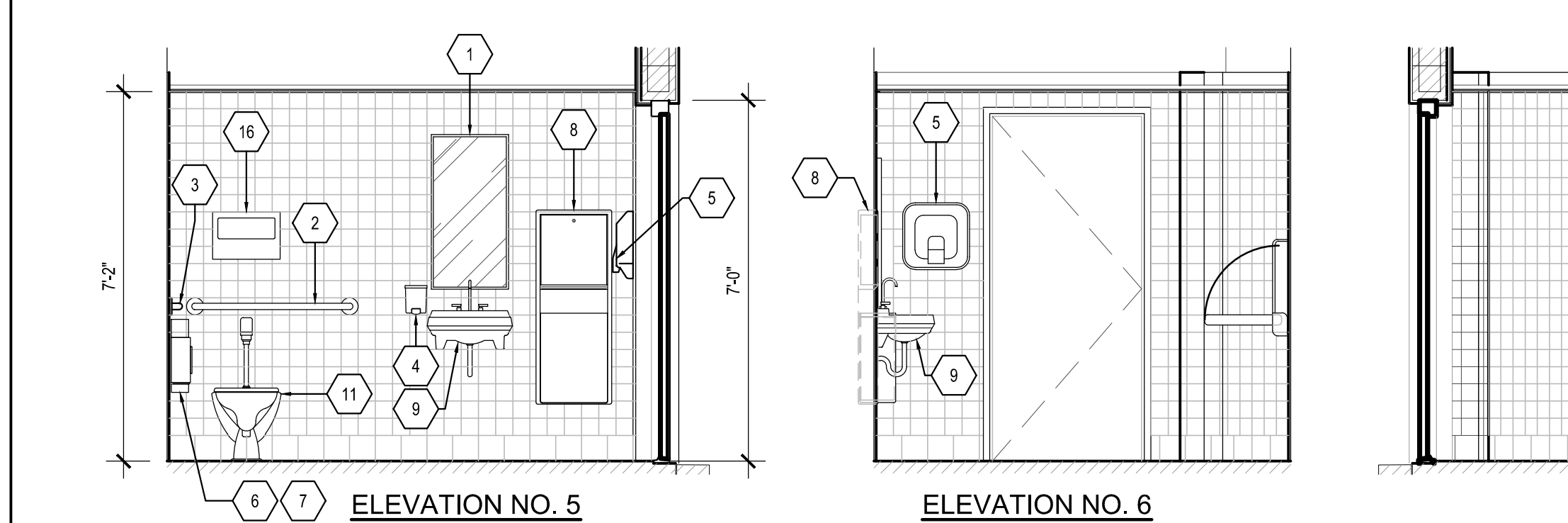
**2 ENLARGED SECOND FLOOR RESTROOMS & KITCHENETTE**  
SCALE : 3/8" = 1'-0"



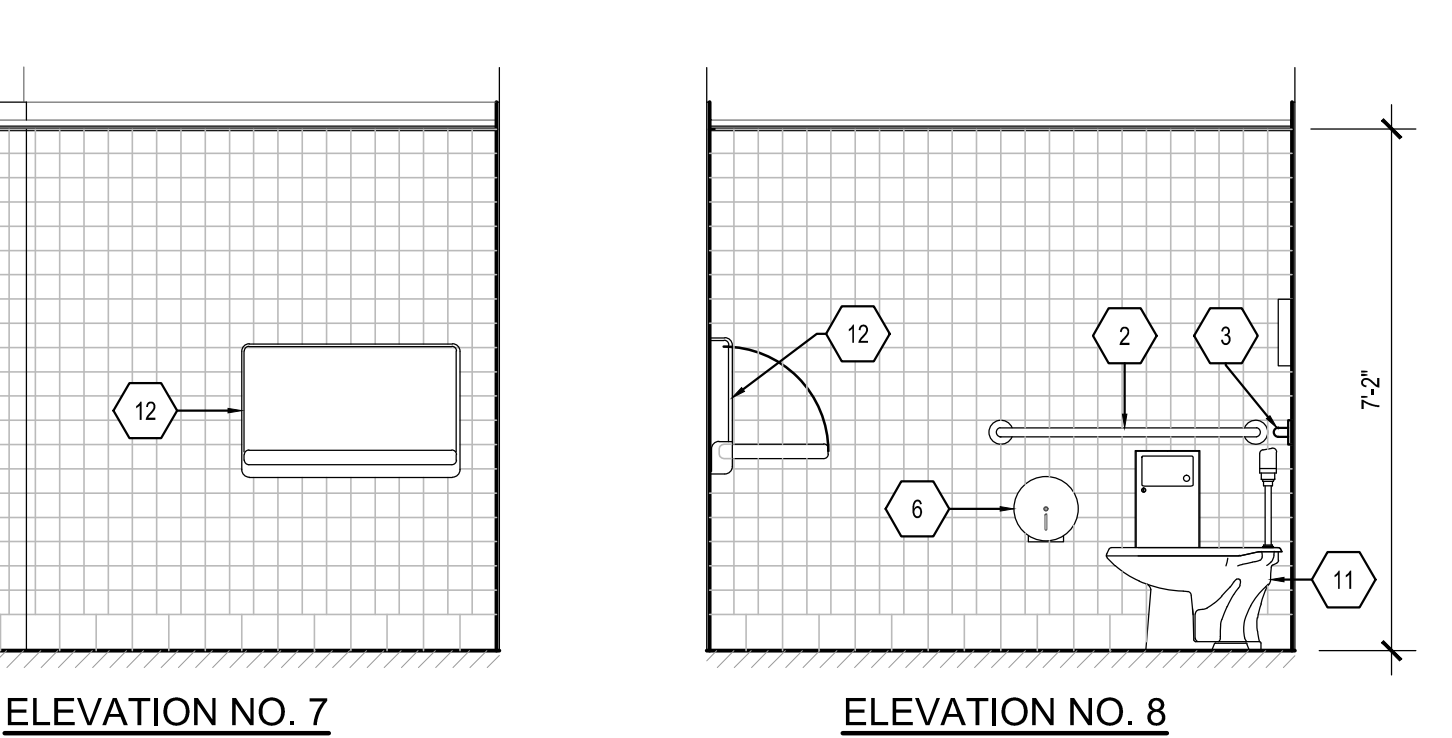
**ELEVATION NO. 1**



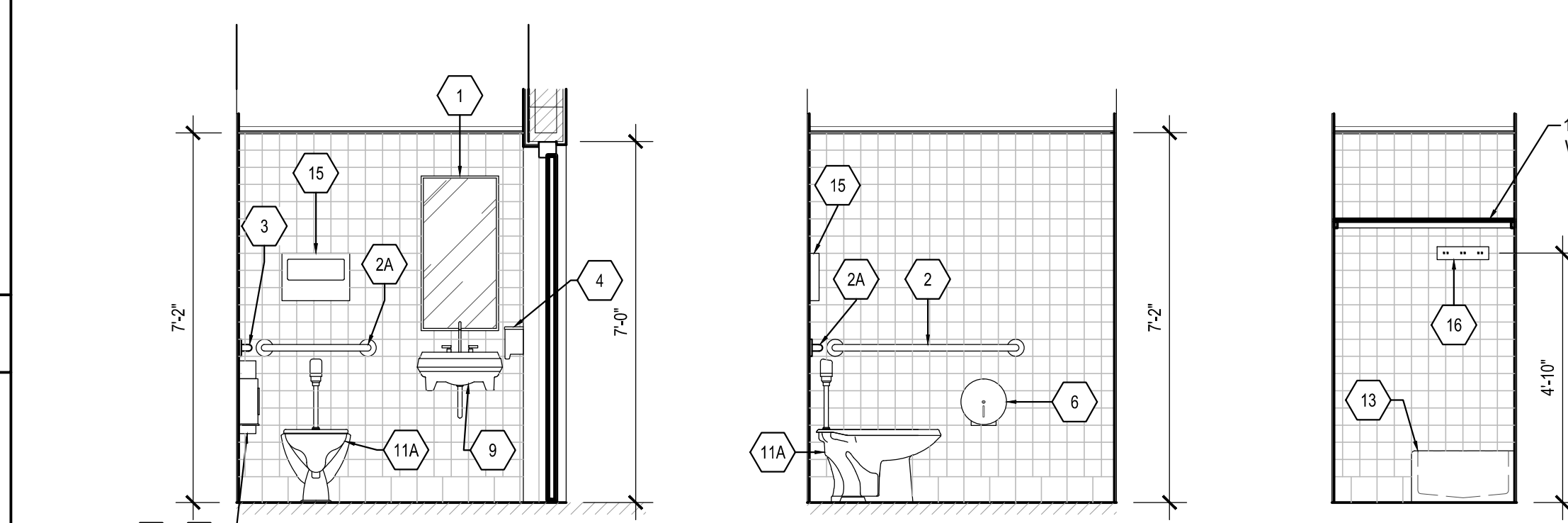
**ELEVATION NO. 2**



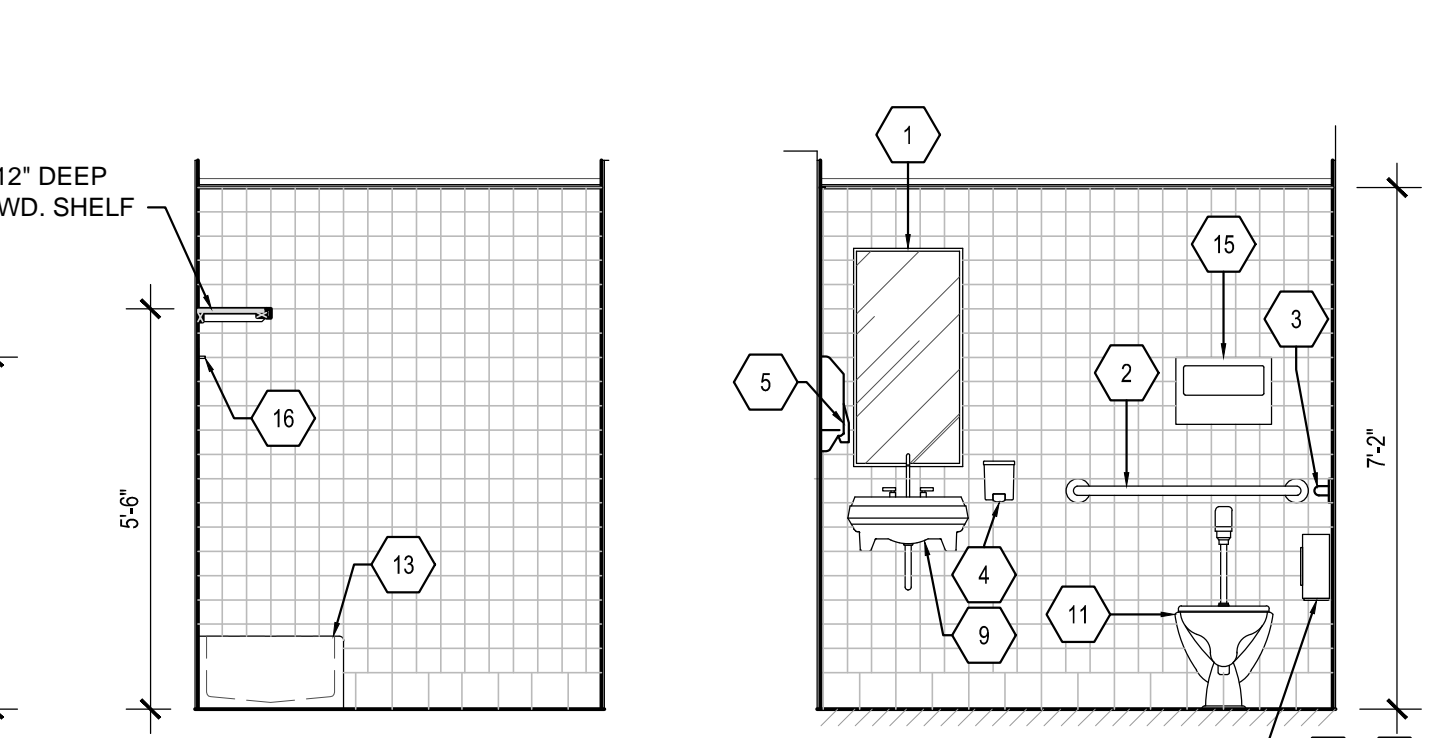
**ELEVATION NO. 3**



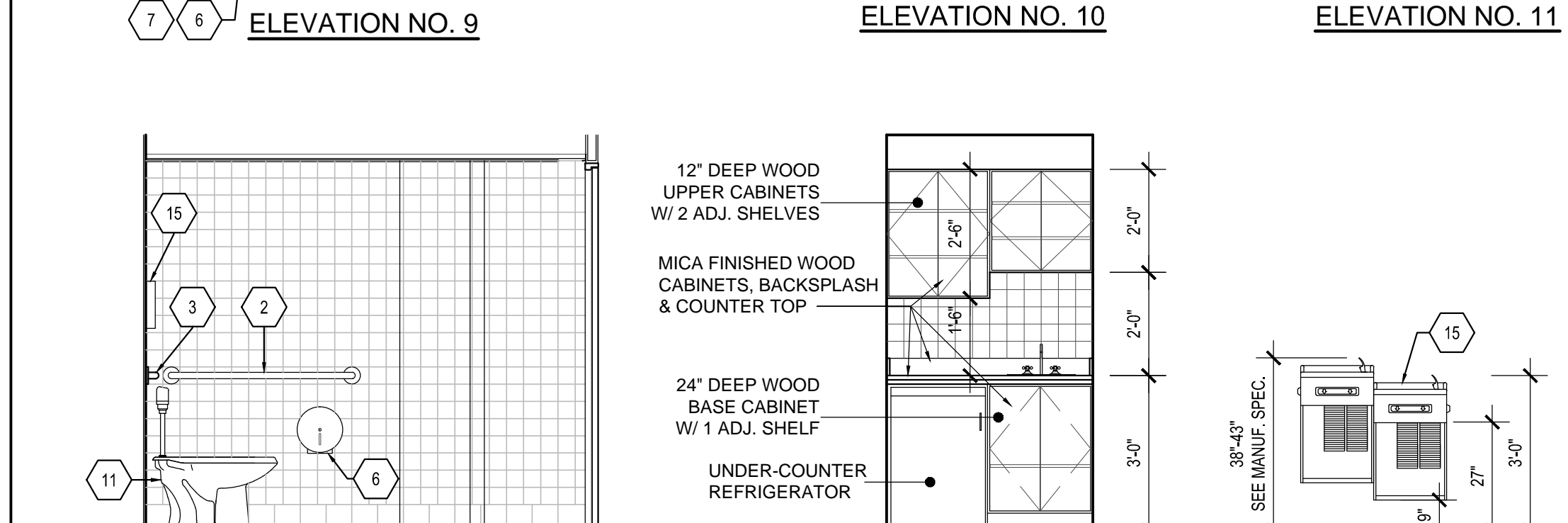
**ELEVATION NO. 4**



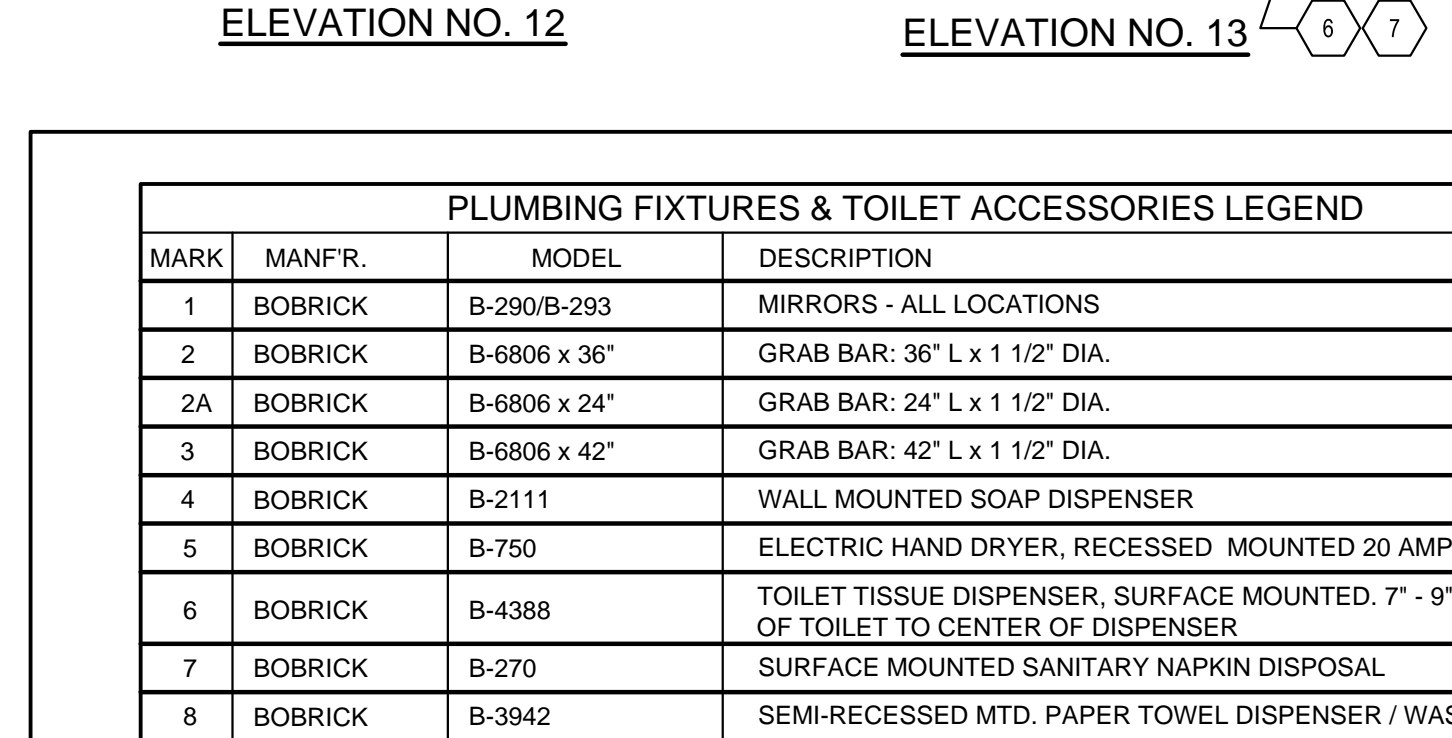
**ELEVATION NO. 5**



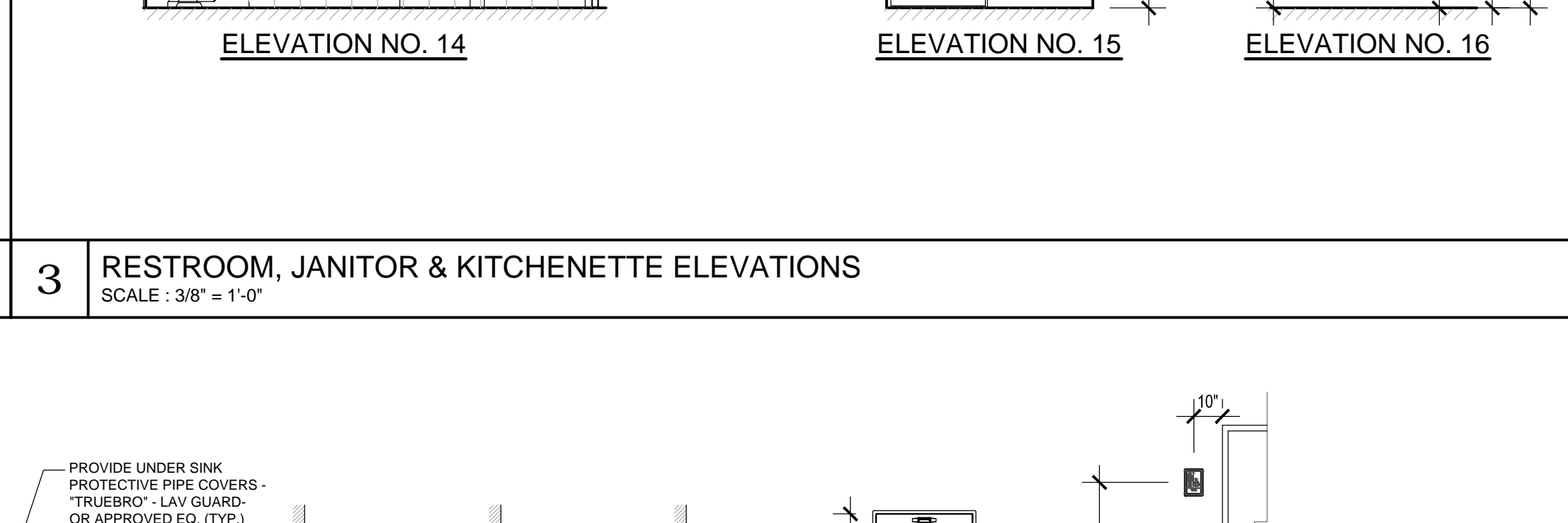
**ELEVATION NO. 6**



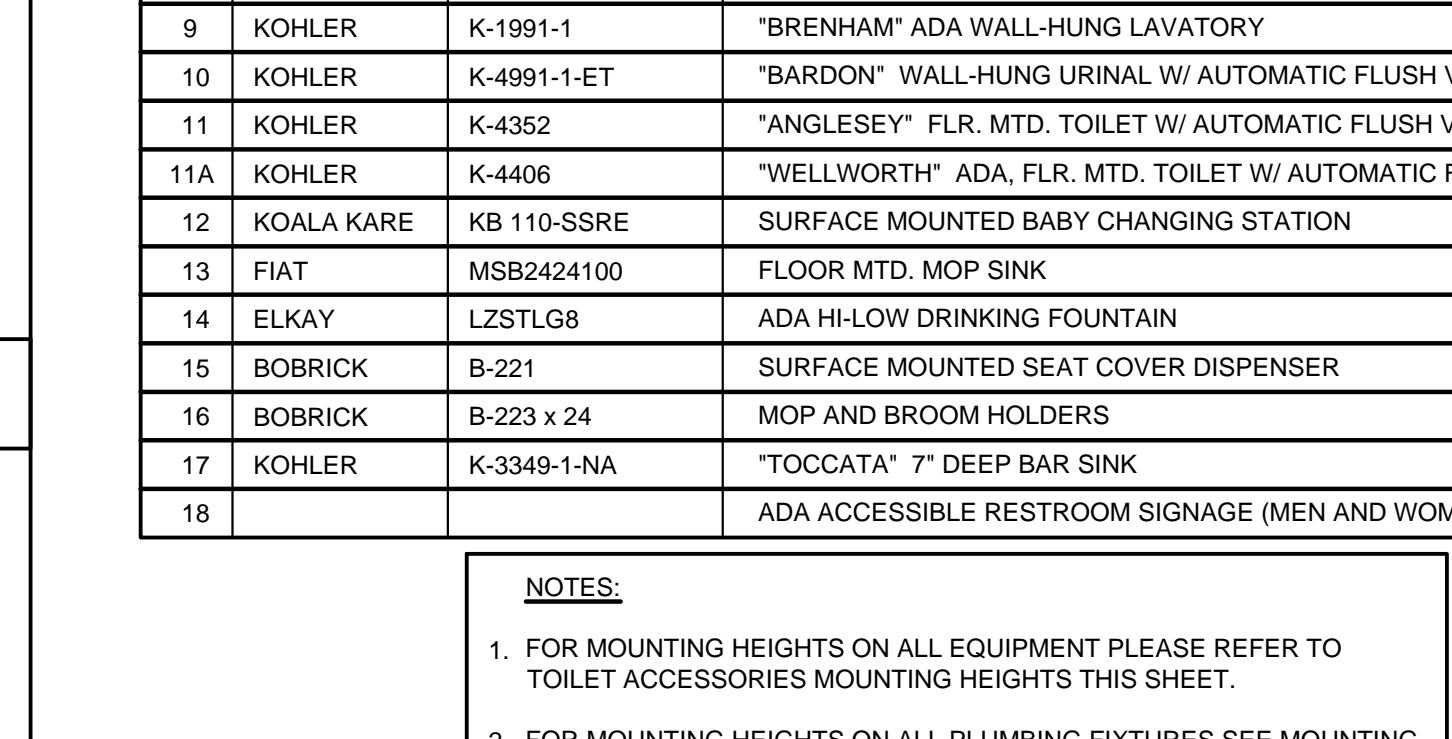
**ELEVATION NO. 7**



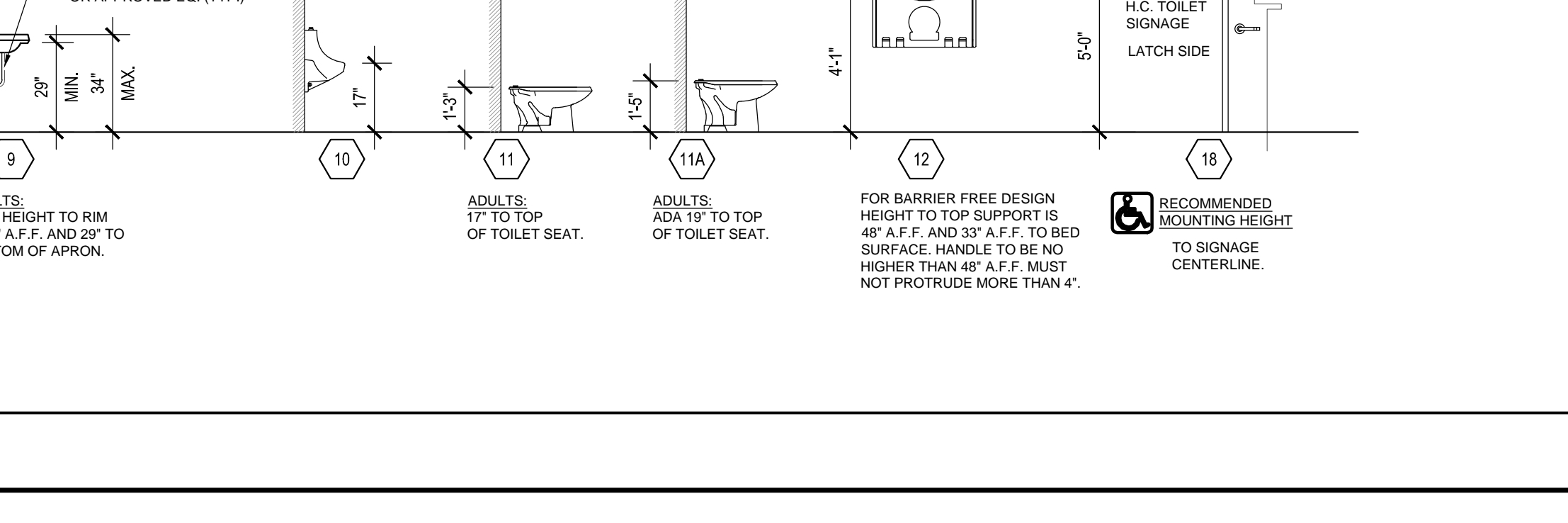
**ELEVATION NO. 8**



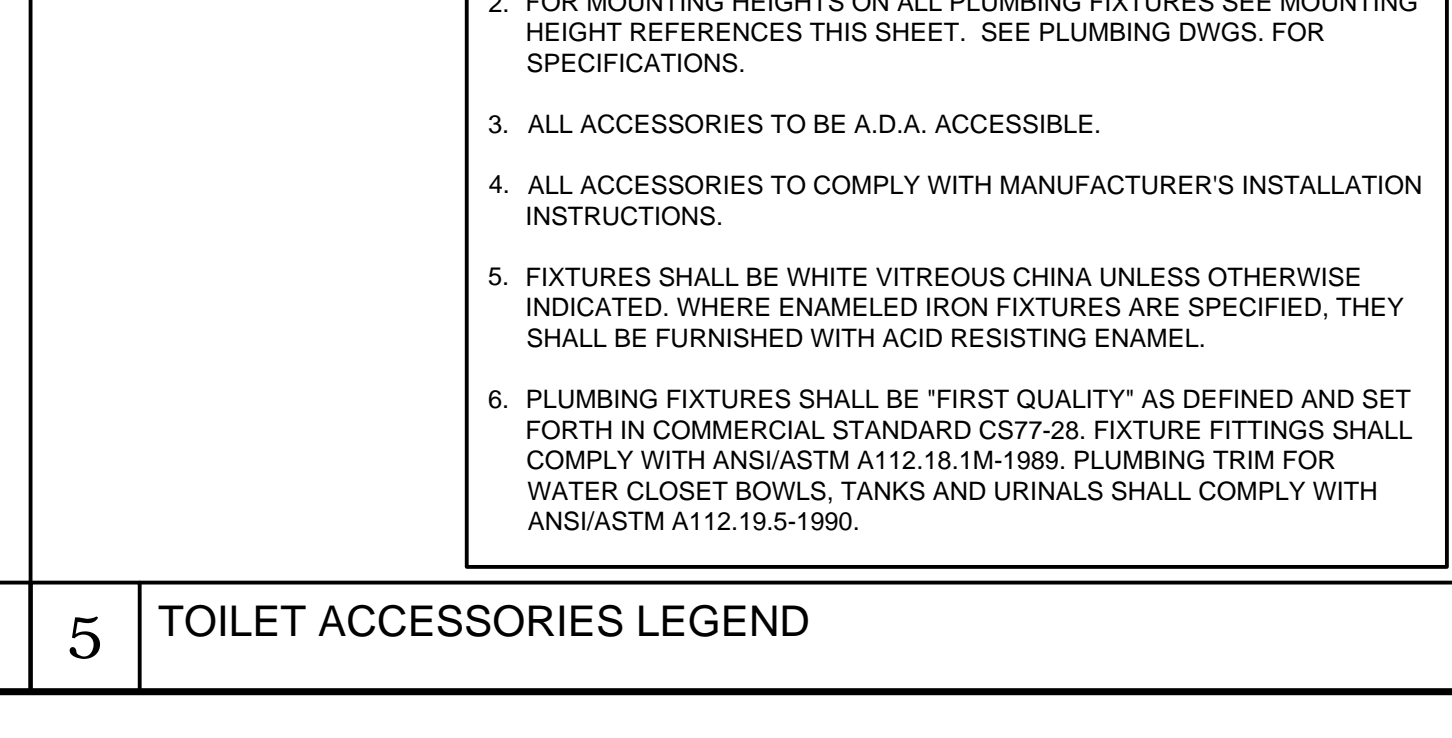
**ELEVATION NO. 9**



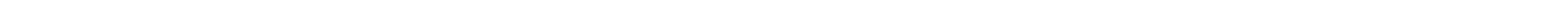
**ELEVATION NO. 10**



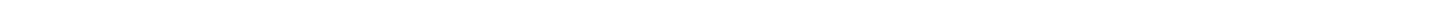
**ELEVATION NO. 11**



**ELEVATION NO. 12**



**ELEVATION NO. 13**



**ELEVATION NO. 14**



**ELEVATION NO. 15**

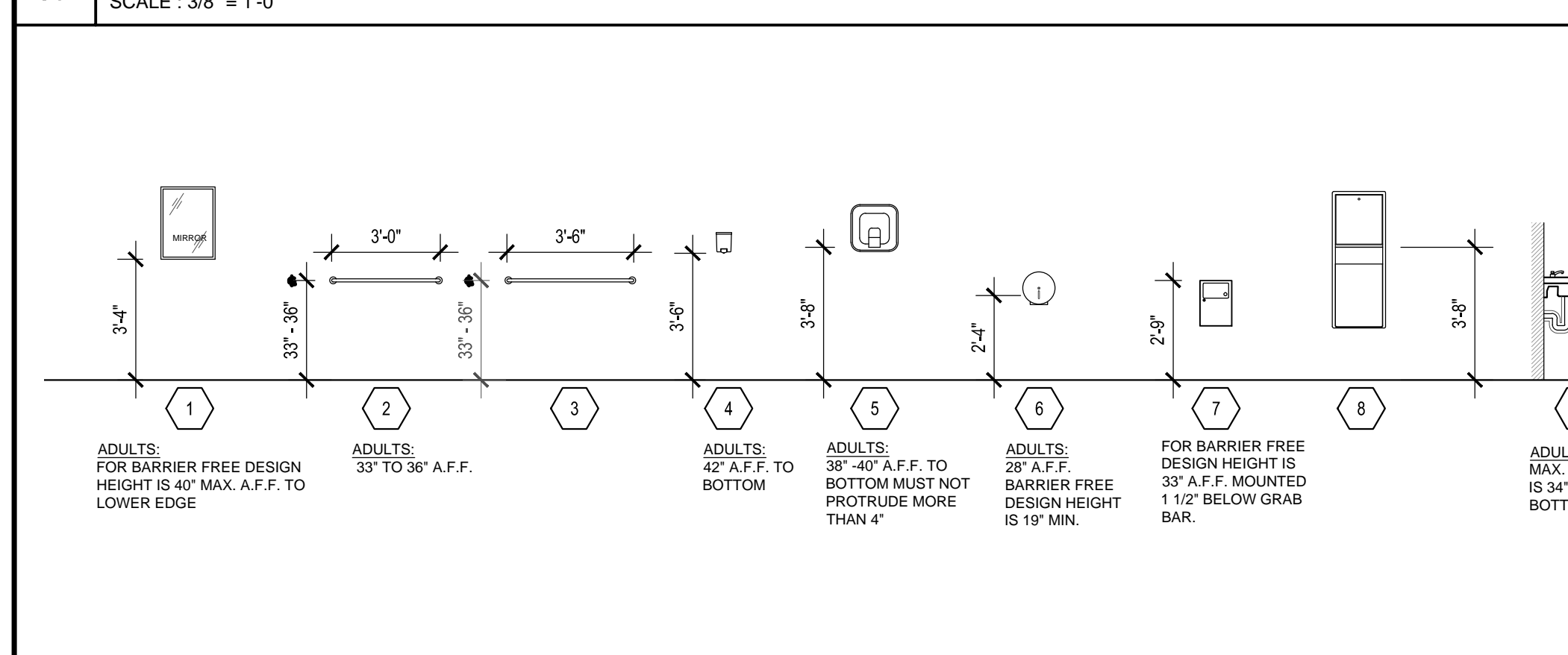


**ELEVATION NO. 16**

PLUMBING FIXTURES & TOILET ACCESSORIES LEGEND			
MARK	MANFR.	MODEL	DESCRIPTION
1	BOBRICK	B-290/B-293	MIRRORS - ALL LOCATIONS
2	BOBRICK	B-6806 x 36"	GRAB BAR: 36" L x 1 1/2" DIA.
2A	BOBRICK	B-6806 x 24"	GRAB BAR: 24" L x 1 1/2" DIA.
3	BOBRICK	B-6806 x 42"	GRAB BAR: 42" L x 1 1/2" DIA.
4	BOBRICK	B-2111	WALL MOUNTED SOAP DISPENSER
5	BOBRICK	B-750	ELECTRIC HAND DRYER, RECESSED MOUNTED 20 AMPS (HEAVY DUTY)
6	BOBRICK	B-4388	TOILET TISSUE DISPENSER, SURFACE MOUNTED. 7" - 9" FROM FRONT OF TOILET TO CENTER OF DISPENSER
7	BOBRICK	B-270	SURFACE MOUNTED SANITARY NAPKIN DISPOSAL
8	BOBRICK	B-3942	SEM-RECESSED MTD. PAPER TOWEL DISPENSER / WASTE RECEPTACLE
9	KOHLER	K-1991-1	"BRENHAM" ADA WALL-HUNG LAVATORY
10	KOHLER	K-4991-1-ET	"BARDON" WALL-HUNG URINAL W/ AUTOMATIC FLUSH VALVE
11	KOHLER	K-4352	"ANGLESEY" FLR. MTD. TOILET W/ AUTOMATIC FLUSH VALVE
11A	KOHLER	K-4406	"WELLWORTH" ADA, FLR. MTD. TOILET W/ AUTOMATIC FLUSH VALVE
12	KOALA KARE	KB 110-SSRE	SURFACE MOUNTED BABY CHANGING STATION
13	FIAT	MSB2424100	FLOOR MTD. MOP SINK
14	ELKAY	LZSTLG8	ADA HI-LOW DRINKING FOUNTAIN
15	BOBRICK	B-221	SURFACE MOUNTED SEAT COVER DISPENSER
16	BOBRICK	B-223 x 24	MOP AND BROOM HOLDERS
17	KOHLER	K-3349-1-NA	"TOCCATA" 7" DEEP BAR SINK
18			ADA ACCESSIBLE RESTROOM SIGNAGE (MEN AND WOMEN)

**NOTES:**

- FOR MOUNTING HEIGHTS ON ALL EQUIPMENT PLEASE REFER TO TOILET ACCESSORIES MOUNTING HEIGHTS THIS SHEET.
- FOR MOUNTING HEIGHTS ON ALL PLUMBING FIXTURES SEE MOUNTING HEIGHT REFERENCES THIS SHEET. SEE PLUMBING DWGS. FOR SPECIFICATIONS.
- ALL ACCESSORIES TO BE A.D.A. ACCESSIBLE.
- ALL ACCESSORIES TO COMPLY WITH MANUFACTURER'S INSTALLATION INSTRUCTIONS.
- FIXTURES SHALL BE WHITE VITREOUS CHINA UNLESS OTHERWISE INDICATED. WHERE ENAMELED IRON FIXTURES ARE SPECIFIED, THEY SHALL BE FURNISHED WITH ACID RESISTING ENAMEL.
- PLUMBING FIXTURES SHALL BE "FIRST QUALITY" AS DEFINED AND SET FORTH IN COMMERCIAL STANDARD CS77-28. FIXTURE FITTINGS SHALL COMPLY WITH ANSI/ASTM A112.18.1M-1989. PLUMBING TRIM FOR WATER CLOSET BOWLS, TANKS AND URINALS SHALL COMPLY WITH ANSI/ASTM A112.19.5-1990.



**4 TOILET ACCESSORY MOUNTING HEIGHTS**  
SCALE : 1/4" = 1'-0"



**5 TOILET ACCESSORIES LEGEND**

REV	DATE	DESCRIPTION
1	12/16/15	DRG REVIEW COMMENTS

DESIGN DELIVERABLE: PERMIT SET  
ISSUE DATE: 01/26/16

PROJECT NUMBER: 1252-140622  
DRAWN BY: KW  
CHECKED BY: MR  
Copyright (c) by SYNALOVSKI ROMANIK SAYE  
All Rights Reserved.

**EXISTING PAVILION RESTROOM ENLARGED PLAN & ELEVATIONS**

SHEET NUMBER:  
**A1-3.0**