



**SYNALOVSKI ROMANIK SAYE**  
Architecture • Planning • Interior Design

1800 Eller Drive, Suite 500  
Fort Lauderdale, FL 33316  
T 954.961.6806  
F 954.961.6807  
www.synalovskid.com

Manuel Synalovski, AIA  
AR 0011688  
SEAL

LICENSE NO. AA26001863

**WINDMILL PARK**

700 LYONS ROAD  
COCONUT CREEK, FL 33063

CLIENT: CITY OF COCONUT CREEK

REV	DATE	DESCRIPTION
1	12/14/15	DRG REVIEW COMMENTS

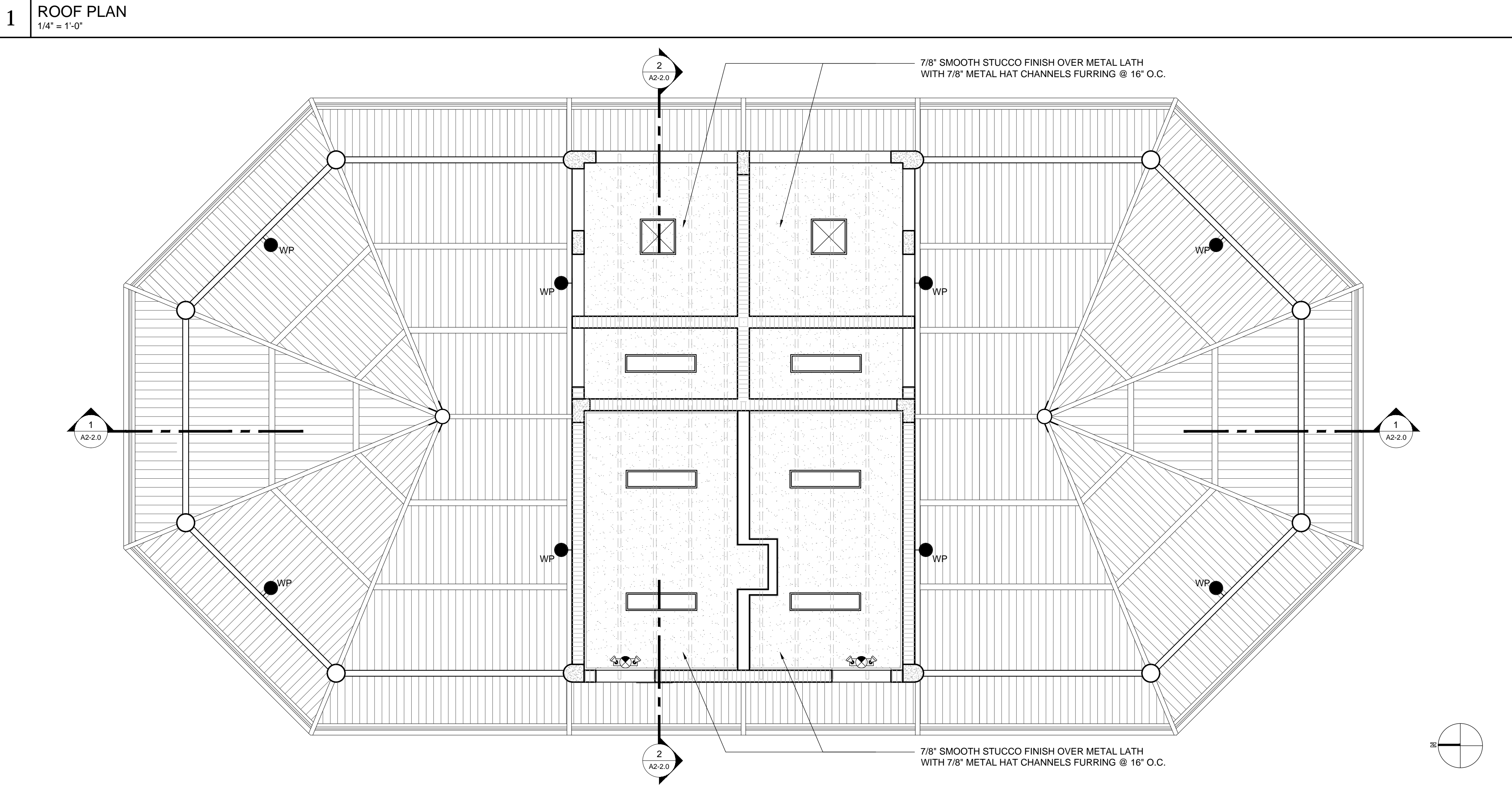
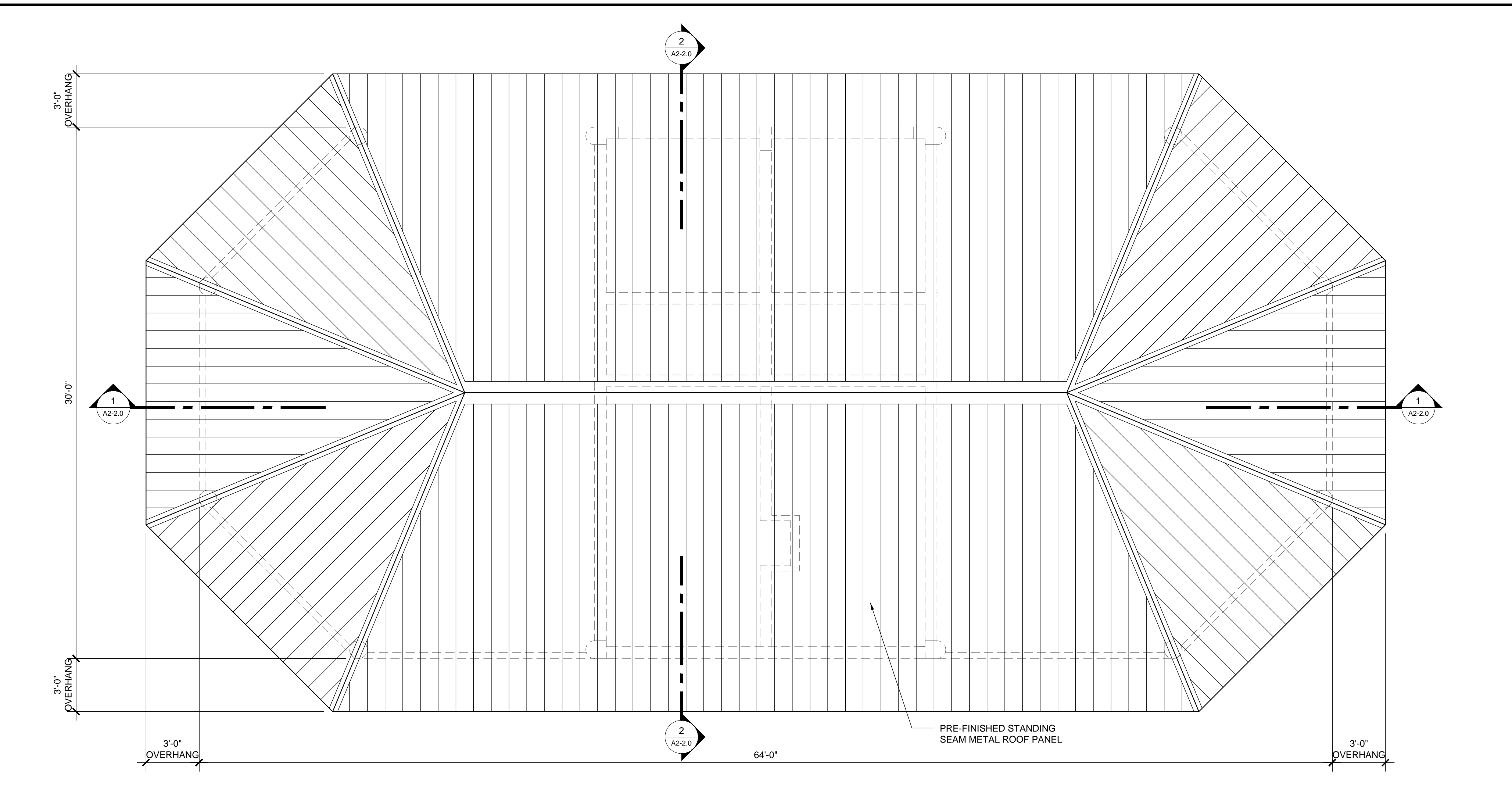
DESIGN DELIVERABLE: PERMIT SET  
ISSUE DATE: 01/26/16

PROJECT NUMBER: 1252-140622  
DRAWN BY: KW  
CHECKED BY: MS

Copyright (c) by SYNALOVSKI ROMANIK SAYE  
All Rights Reserved.

SHEET TITLE:  
**DOG PAVILLION  
ROOF & CEILING  
PLANS**

SHEET NUMBER:  
**A2-1.1**



- ROOF FRAMING PLAN REPRESENTS THE INTENT OF DESIGN ONLY. TRUSS MANUFACTURER SHALL PROVIDE ENGINEERING TO ACHIEVE DESIGN SHOWN AND SUBMIT TO THE ARCHITECT OF RECORD THE PROPOSED TRUSS LAYOUT INCLUDING LOCATION OF BEARING POINTS, GIRDERS, TRUSS PROFILES, UPLIFTS, ETC. IT SHALL BE THE RESPONSIBILITY OF THE TRUSS MANUFACTURER TO NOTIFY THE ARCHITECT OF ANY LOCATIONS WHERE ADDITIONAL BEARING POINTS ARE NECESSARY AND ADVISE AS TO WHAT KIND OF BEARING IS REQUIRED BASED ON THE CALCULATED LOADS.
- PRE-ENGINEERED WOOD TRUSSES AT 24" O.C. TRUSS MANUFACTURER TO PROVIDE ENGINEERED DRAWINGS SIGNED AND SEALED BY A FLORIDA REGISTERED ENGINEER.
- TRUSS MANUFACTURER SHALL SUBMIT SIGNED & SEALED SHOP DRAWINGS AND CALCULATIONS TO THE ARCHITECT OF RECORD FOR APPROVAL PRIOR TO FABRICATION (5 SETS MINIMUM).
- TRUSS MANUFACTURER SHALL INCLUDE A COLLATION OF TRUSS DESIGNS AND CONNECTIONS.
- BRACING FOR ROOF SYSTEM IS DESIGNED FOR BOTH POSITIVE AND NEGATIVE PRESSURE AND MEETS THE REQUIREMENTS OF F.B.C., CHAPTER 23, 2007 EDITION.
- LATERAL BRACING SHALL BE 1X3 WOOD STRIPS OR 7/8" RESILIENT METAL FURRING CHANNELS TO UNDERSIDE OF TRUSS BOTTOM CHORDS AT 16" O.C..
- 2X4 CONTINUOUS BOTTOM CHORD LATERAL BRACING AT 1/2 POINTS. STAGGER JOINTS OVER (2) TRUSSES AND FASTEN TO EACH TRUSS W/ (2)-16d NAILS.
- PROVIDE HORIZONTAL BRACING AT ALL RIDGES. 2X4 #2 SOUTHERN YELLOW PINE FB = 1,350 P.S.I. NAILED TO EACH TRUSS WITH (2)-16d NAILS.

**3 PRE-ENGINEERED WOOD TRUSS NOTES**

- 5/8 INCH GYPSUM WALLBOARD ON 3-5/8 INCH X 22 GAGE METAL STUD FRAMING AT 16 INCHES OC ON SPANS UP TO 8 FEET, 6 INCH X 20 GAGE METAL STUD FRAMING AT 16 INCHES OC ON SPANS UP TO 12 FEET, 8 INCH X 20 GAGE AT 16 INCHES OC ON SPANS UP TO 16 FEET. BRACE FRAME UP TO STRUCTURE AT 24 INCHES OC WITH LIKE FRAMING MEMBERS.
- EXTERIOR STUCCO CEILINGS (MINIMUM REQUIREMENTS): PORTLAND CEMENT PLASTER (STUCCO) ON 3.4 GALV. METAL RIB-LATH ON 7/8" RESILIENT METAL FURRING CHANNELS AT 16" O.C. TO UNDERSIDE OF WOOD TRUSSES.
- COORDINATE ALL LIGHTING, FANS, ETC. WITH ELECTRICAL DRAWINGS.
- REFER TO MEP DRAWINGS FOR ADDITIONAL SCOPE AND INFORMATION.

**4 CEILING NOTES**

- EXTERIOR WALL & WOOD BEAM MOUNTED LIGHT FIXTURE - UL LISTED FOR WET LOCATION MOUNTED 11'-0" A.F.F. UNLESS NOTED OTHERWISE
- 1' x 4' CEILING MOUNTED FLUORESCENT LIGHT FIXTURE
- 2' x 2' CEILING MOUNTED FLUORESCENT LIGHT FIXTURE - ENCLOSED L.E.D. UL LISTED FOR WET LOCATION
- EMERGENCY BATTERY WALL PACK & EXIT LIGHT COMBINATION MOUNTED 9'-0" A.F.F. UNLESS NOTED OTHERWISE

**5 CEILING LEGEND**

**TYPICAL ROOFING NOTE**  
ENGLERT "ANGLER SERIES 1300" GALV. MTL. PAN / 90 DEG. STANDING SEAM METAL ROOF, OVER 1-LAYER GRACE "ICE & WATER SHIELD HT" SELF-ADHERING UNDERLAYMENT, OVER 1-LAYER GAF VERSASHIELD ROOF DECK PROTECTION FIRESHIELD & 1-LAYER 30lb ROOFING FELT SECURED PER FBC 1507.4.5 TO 1-LAYER 19/32" EXPOSURE 1 APA RATED CD PLYWOOD SHEATHING, OR 2x T&G STRUCT. WOOD DECKING SECURES PER STRUCTURAL DRAWINGS.  
FINISH COLOR: PACIFIC BLUE

**6 TYPICAL ROOFING NOTE**

**1 ROOF PLAN**  
1/4" = 1'-0"

**2 CEILING PLAN**  
1/4" = 1'-0"