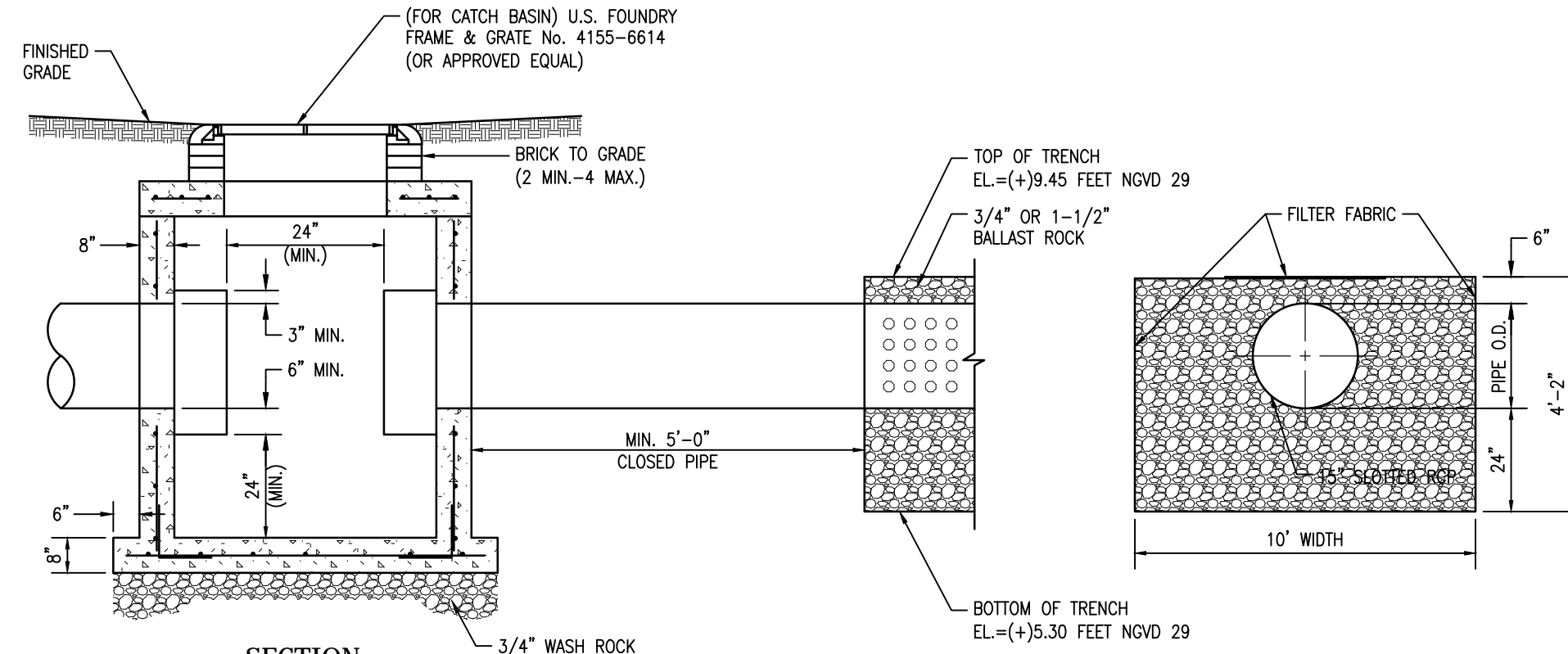


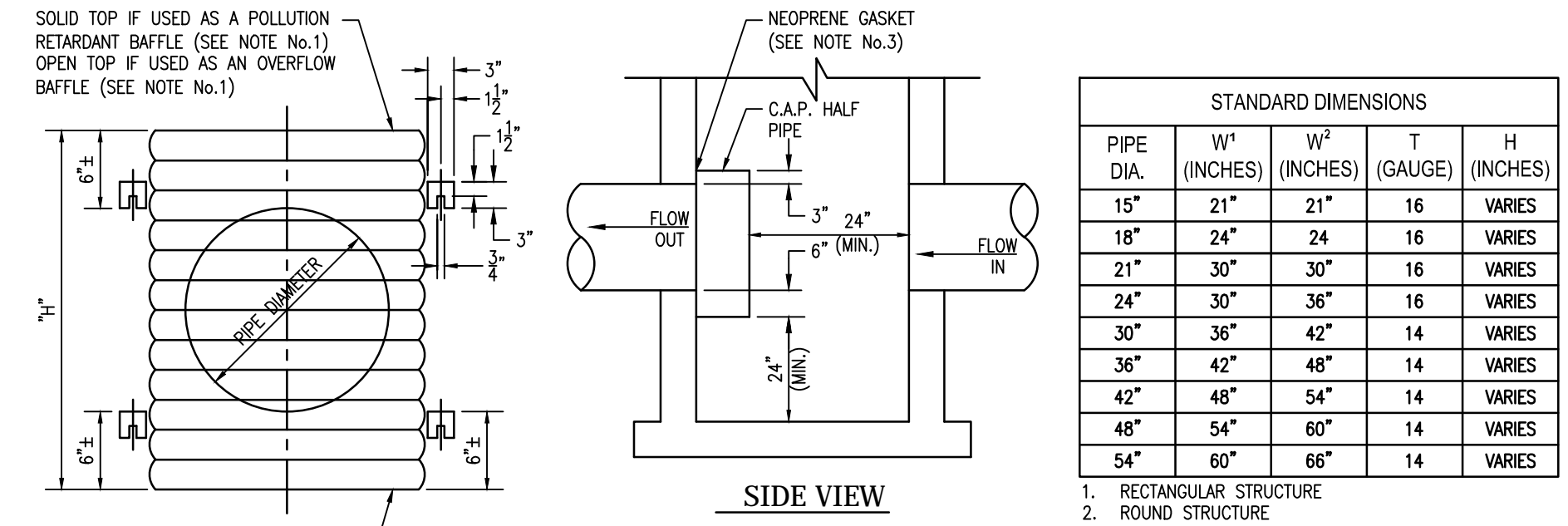
- NOTES:**
- ALL UNSATISFACTORY SOILS ENCOUNTERED ARE TO BE REMOVED AND PROPERLY DISPOSED OF BY THE CONTRACTOR.
 - SUITABLE BACKFILL SHALL BE IMPORTED AS NEEDED UP TO THE BEDDING FOUNDATION. STREETS SHALL BE WASHED DOWN WITH A WATER TRUCK AND SWEEPED EACH DAY.

PIPE TRENCH IN UNSATISFACTORY SOILS
SCALE: N.T.S.



- NOTES:**
- PIPES SHALL TERMINATE 2' FROM END OF TRENCH (CAP ENDS OF PIPE) OR CONNECT TO ADDITIONAL CATCH BASINS AS REQUIRED.
 - SIDES AND TOP OF TRENCH ONLY TO BE LINED WITH FILTER FABRIC. OVERLAP LINER A MINIMUM OF 2' AT THE TOP OF THE TRENCH.
 - MIN. TRENCH WIDTH = 6 FEET AND MIN. TRENCH DEPTH = 5 FEET.
 - BALLAST ROCK SHALL BE FROM FRESH WATER, WASHED AND FREE OF DELETERIOUS MATTER.
 - ALL EXFILTRATION TRENCHES SHALL HAVE A POLLUTION RETARDANT BAFFLE AT EACH CONNECTION POINT TO A STRUCTURE. (SEE POLLUTION RETARDANT BAFFLE DETAIL.)
 - GASKETS SHALL BE USED WITH RCP IN EXFILTRATION TRENCH.

EXFILTRATION TRENCH DETAIL
SCALE: N.T.S.

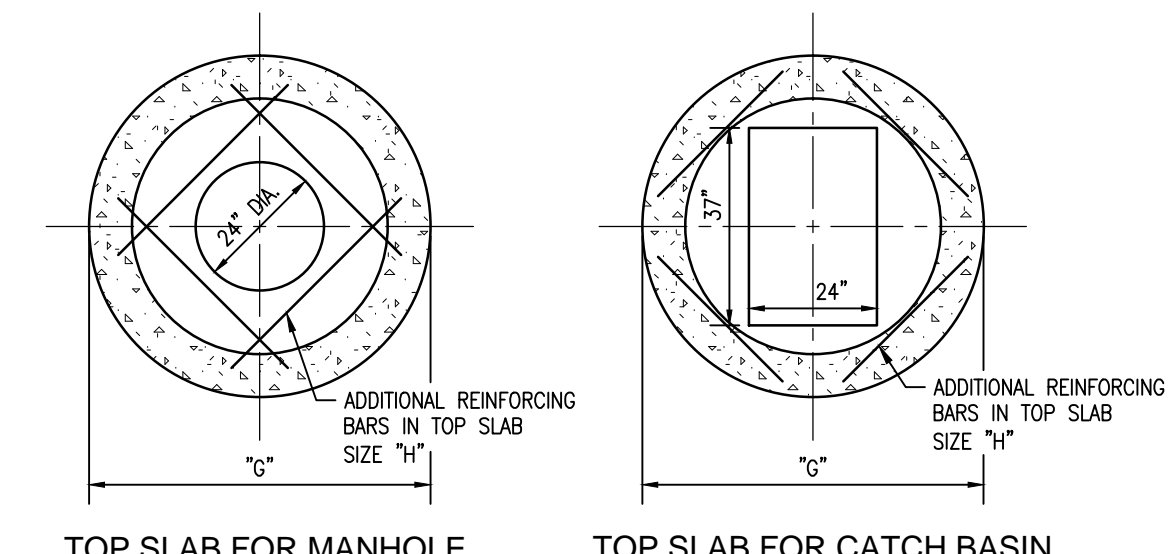
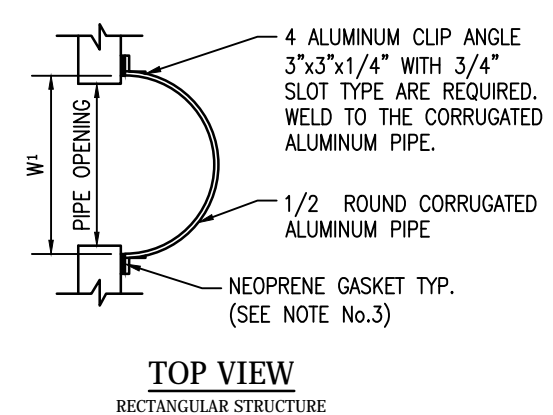


- NOTES:**
- ALUMINUM SHEET OF SAME THICKNESS (GAUGE) AS PIPE SHALL BE WELDED TO CLOSE OPENING.
 - BAFFLE SHALL BE AS MANUFACTURED BY SOUTHERN CULVERT OR ENGINEER'S APPROVED EQUAL.
 - NEOPRENE GASKET (3/8" x 2") SHALL BE INSTALLED AT ALL BAFFLES.

POLLUTION RETARDANT BAFFLE
SCALE: N.T.S.

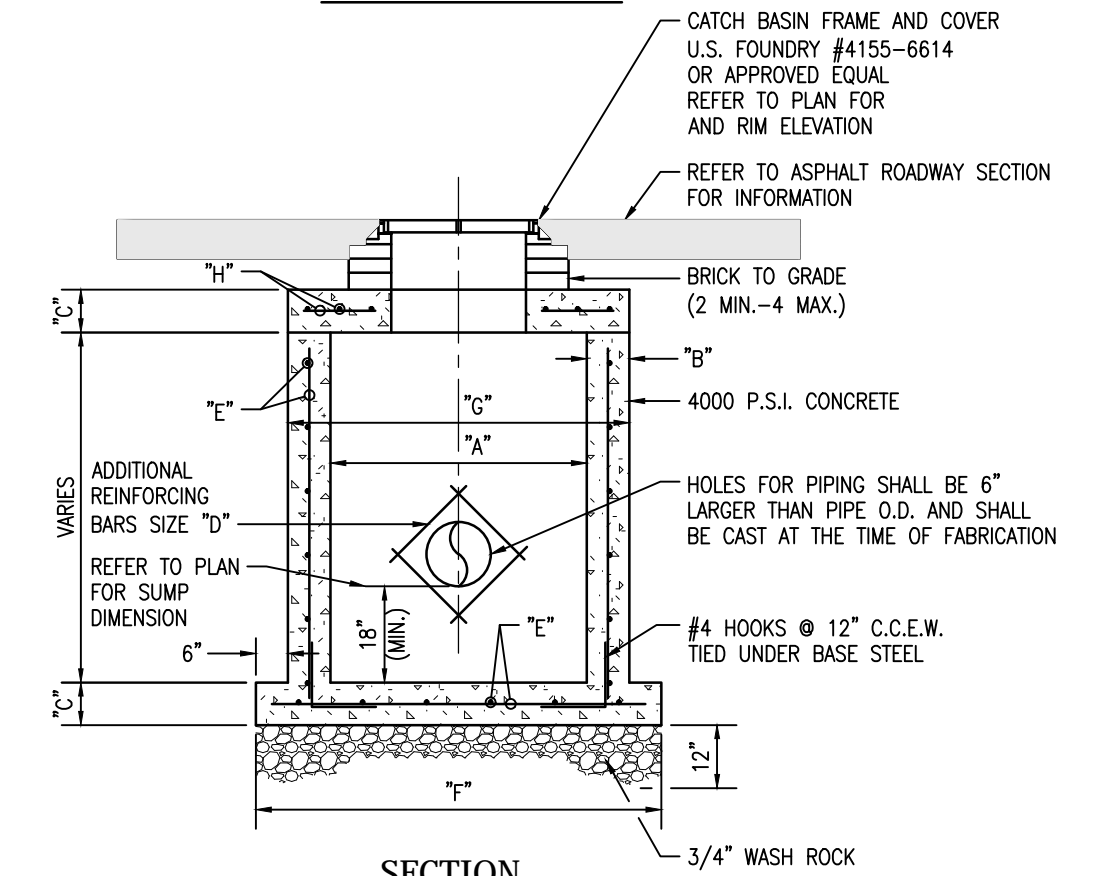
STANDARD DIMENSIONS				
PIPE DIA. (INCHES)	W ¹ (INCHES)	W ² (INCHES)	T (GAUGE)	H (INCHES)
15"	21"	21"	16	VARIES
18"	24"	24	16	VARIES
21"	30"	30"	16	VARIES
24"	30"	36"	16	VARIES
30"	36"	42"	14	VARIES
36"	42"	48"	14	VARIES
42"	48"	54"	14	VARIES
48"	54"	60"	14	VARIES
54"	60"	66"	14	VARIES

- RECTANGULAR STRUCTURE
- ROUND STRUCTURE



TOP SLAB FOR MANHOLE **TOP SLAB FOR CATCH BASIN**

TOP SLAB DETAILS

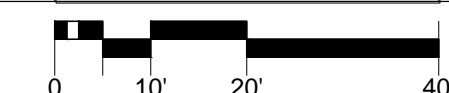
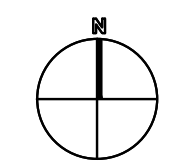


TYPE	"A"	"B"	"C"	"D"	"E"	"F"	"G"	"H"
C-4	4'-0"	8'	8'	#4 @ 12" C.C.E.W.	#4 @ 12" C.C.E.W.	6'-6"	5'-4"	#4 @ 6" C.C.E.W.

* STEEL DESIGN SHOWN HERE IS A MINIMUM, ALL STEEL DESIGN SHALL MEET OR EXCEED ASTM C478. ALL REBAR SHALL BE 60 KSI.

PRECAST CIRCULAR MANHOLE AND CATCH BASIN
SCALE: N.T.S.

DRC SUBMISSION
PRELIMINARY NOT FOR CONSTRUCTION
ELEVATIONS SHOWN ARE NGVD 29
(NAVD88=NGVD29-1.565')



SYNALOVSKI ROMANK SAYE
Architecture • Planning • Interior Design

1800 Eller Drive, Suite 500
Fort Lauderdale, FL 33316
T 954.961.6806
F 954.961.6807
www.synalovskid.com

NICHOLAS B. MAHON, P.E.
STATE OF FLORIDA PROFESSIONAL ENGINEER
LICENSE NO. 78361

Certificate of Authorization 514



Calvin, Giordano & Associates, Inc.
EXCEPTIONAL SOLUTIONSSM
1800 Eller Drive, Suite 600, Fort Lauderdale, Florida 33316
Phone: 954.921.7731 • Fax: 954.921.8887

WINDMILL PARK

700 LYONS ROAD
COCONUT CREEK, FL 33063
CLIENT: CITY OF COCONUT CREEK

REV	DATE	DESCRIPTION

DESIGN 100% COMPLETION
DELIVERABLE: SET
ISSUE DATE: 01/13/2016

PROJECT NUMBER: 1252-140622
DRAWN BY: JB
CHECKED BY: NBM

Copyright (c) by SYNALOVSKI ROMANK SAYE
All Rights Reserved.

SHEET TITLE:
PAVING, GRADING AND DRAINAGE DETAILS