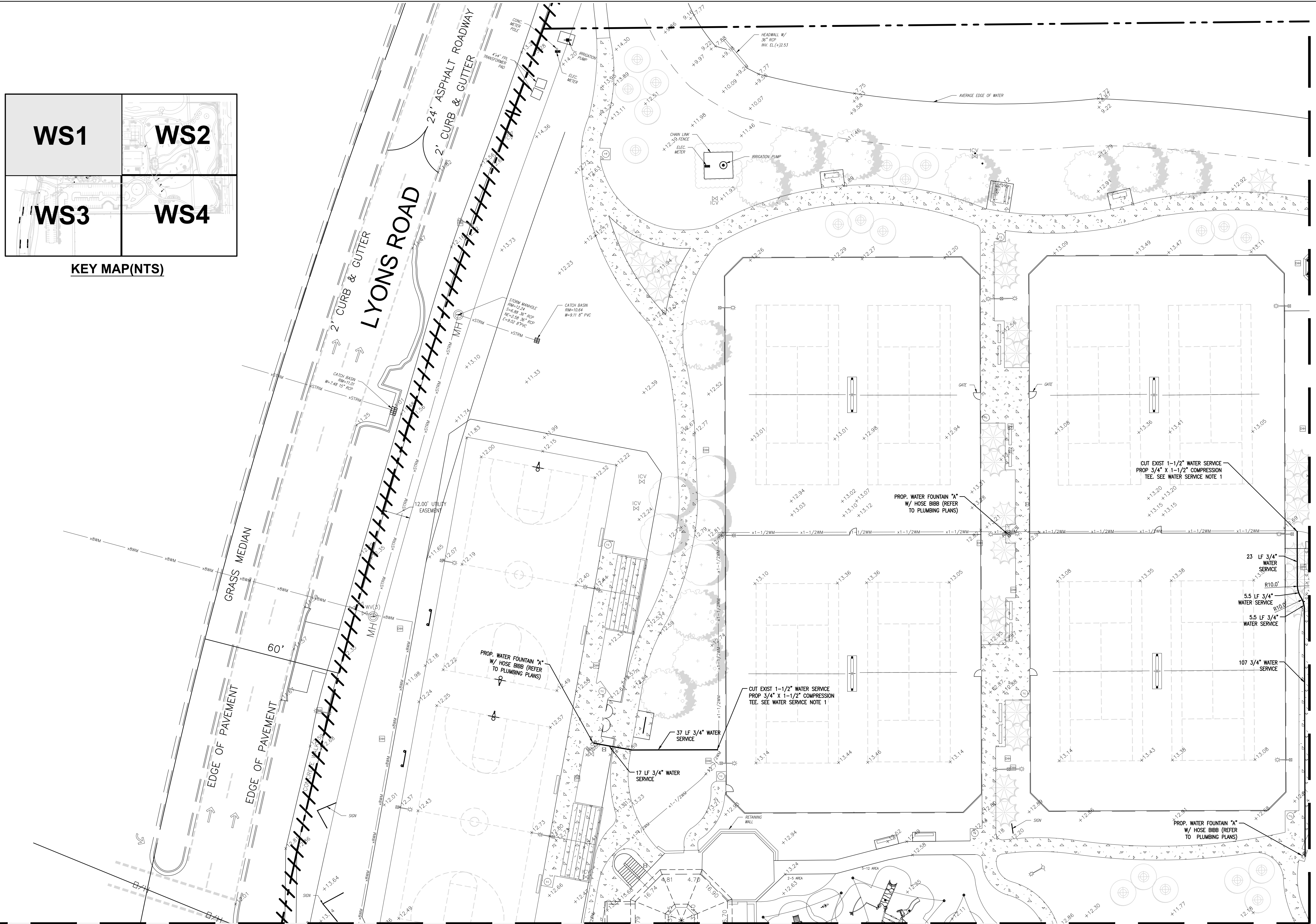


KEY MAP(NTS)



MATCH LINE (SEE SHEET WS3 FOR CONTINUATION)

MATCH LINE (SEE SHEET WS2 FOR CONTINUATION)

**WATER SERVICE NOTE:**

1. TRANSITION TO WATER FOUNTAIN CONNECTION WITH BRASS FITTINGS. ALL PLUMBING WORK TO BE PER FLORIDA BUILDING CODE.
2. 6" MINIMUM VERTICAL SEPARATION SHALL BE MAINTAINED AT ALL UTILITY CROSSINGS.

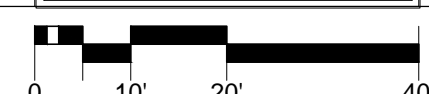
**LEGEND**

- PROPOSED ASPHALT
- PROPOSED CONCRETE

DRC SUBMISSION  
PRELIMINARY NOT FOR CONSTRUCTION  
ELEVATIONS SHOWN ARE NGVD 29  
(NAVD88=NGVD29-1.565')



1 WATER AND SEWER PLAN  
1" = 20'-0"



SYNALOVSKI ROMANK SAYE  
Architecture • Planning • Interior Design

1800 Eller Drive, Suite 500  
Fort Lauderdale, FL 33316  
T 954.961.6806  
F 954.961.6807  
www.synalovskid.com

NICHOLAS B. MAHON, P.E.  
STATE OF FLORIDA PROFESSIONAL ENGINEER  
LICENSE NO. 78361

Certificate of Authorization 514



Calvin, Giordano & Associates, Inc.  
EXCEPTIONAL SOLUTIONS  
1800 Eller Drive, Suite 600, Fort Lauderdale, Florida 33316  
Phone: 954.921.7721 • Fax: 954.921.8807

**WINDMILL PARK**

700 LYONS ROAD  
COCONUT CREEK, FL 33063

CLIENT: CITY OF COCONUT CREEK

REV	DATE	DESCRIPTION
1	12/14/2015	DRC REVIEW COMMENTS
2	01/13/2016	DRC REVIEW COMMENTS

DESIGN DELIVERABLE: SET  
100% COMPLETION  
ISSUE DATE: 01/13/2016

PROJECT NUMBER: 1252-140622  
DRAWN BY: JB  
CHECKED BY: NBM

Copyright (c) by SYNALOVSKI ROMANK SAYE  
All Rights Reserved.

**WATER AND SEWER PLAN**

SHEET NUMBER:  
**WS1**