



REV	DATE	DESCRIPTION
1	12/14/2015	DRC REVIEW COMMENTS
2	01/13/2016	DRC REVIEW COMMENTS

DESIGN 100% COMPLETION
DELIVERABLE: SET
ISSUE DATE: 01/13/2016

PROJECT NUMBER: 1252-140622
DRAWN BY: JB
CHECKED BY: NBM
Copyright (c) by SYNALOVSKI ROMANK SAYE
All Rights Reserved.

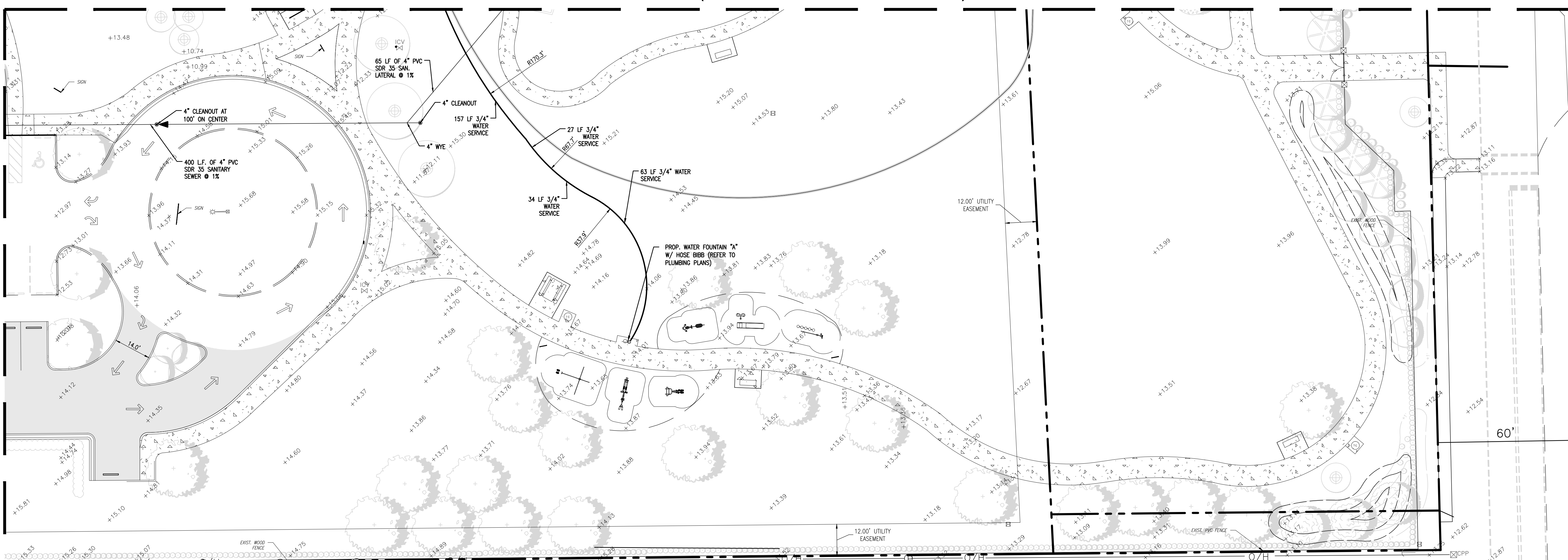
SHEET TITLE:
**WATER AND SEWER
PLAN AND DETAILS**

SHEET NUMBER:

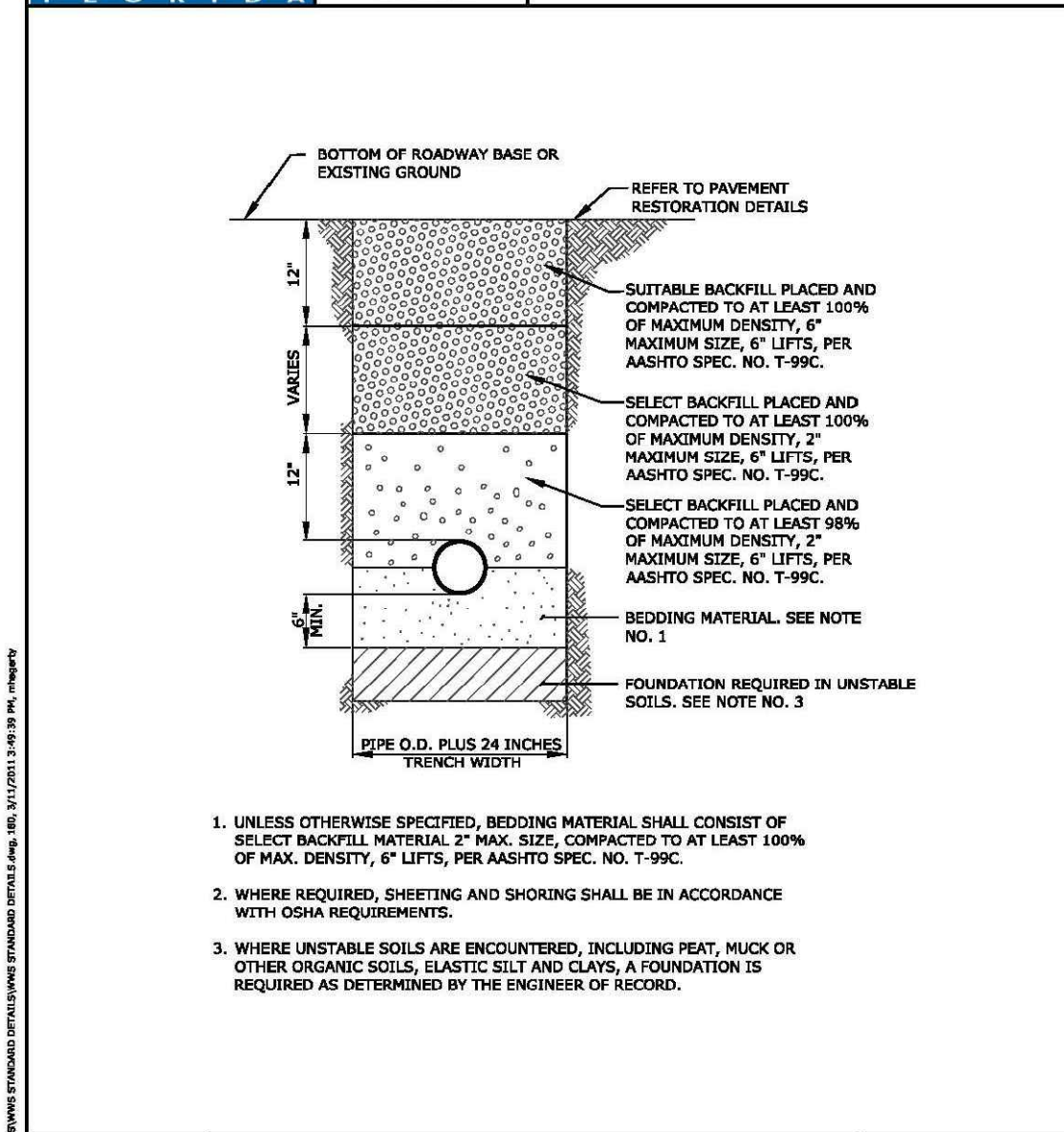
WS4

MATCH LINE (SEE SHEET WS2 FOR CONTINUATION)

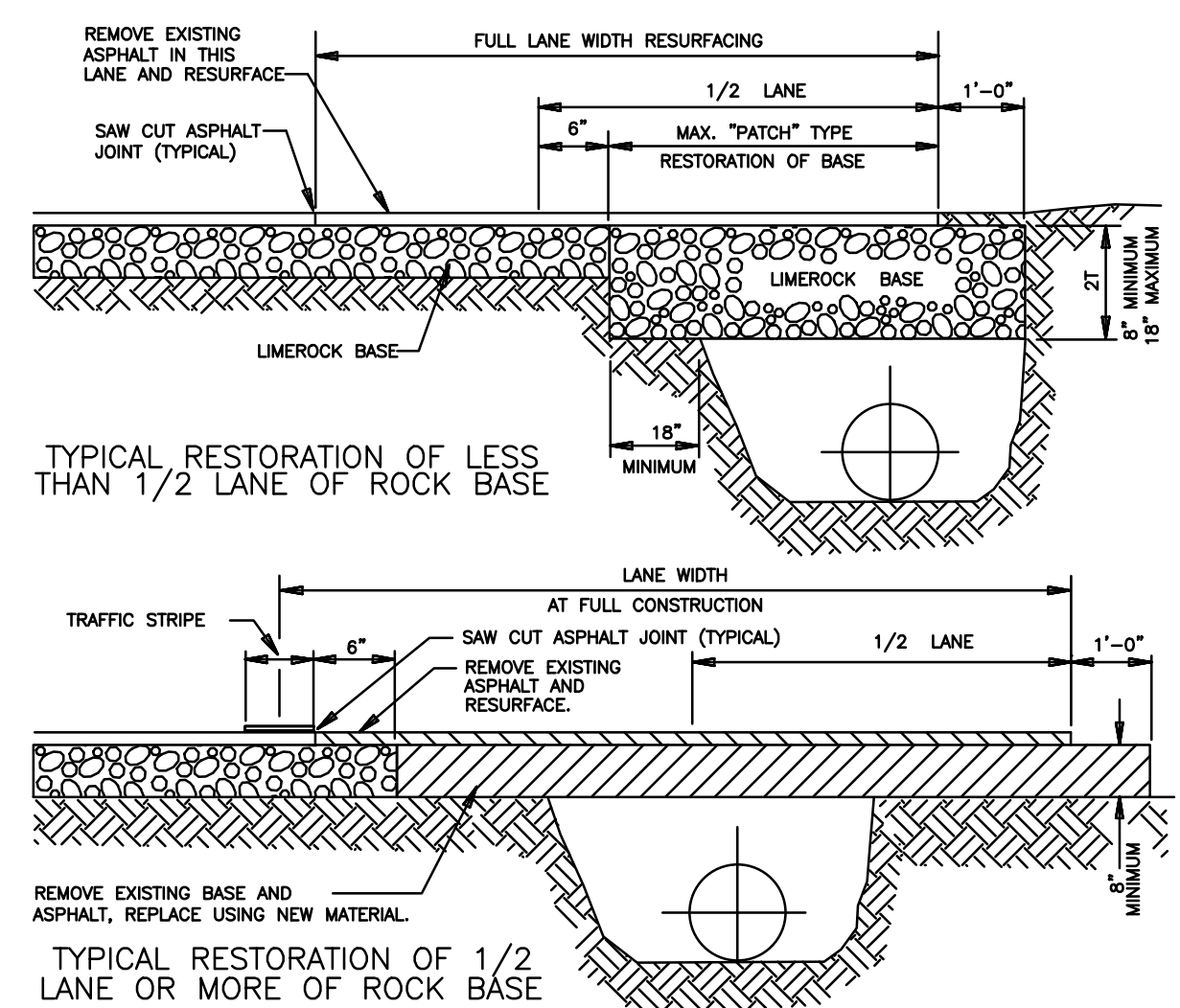
MATCH LINE (SEE SHEET WS3 FOR CONTINUATION)



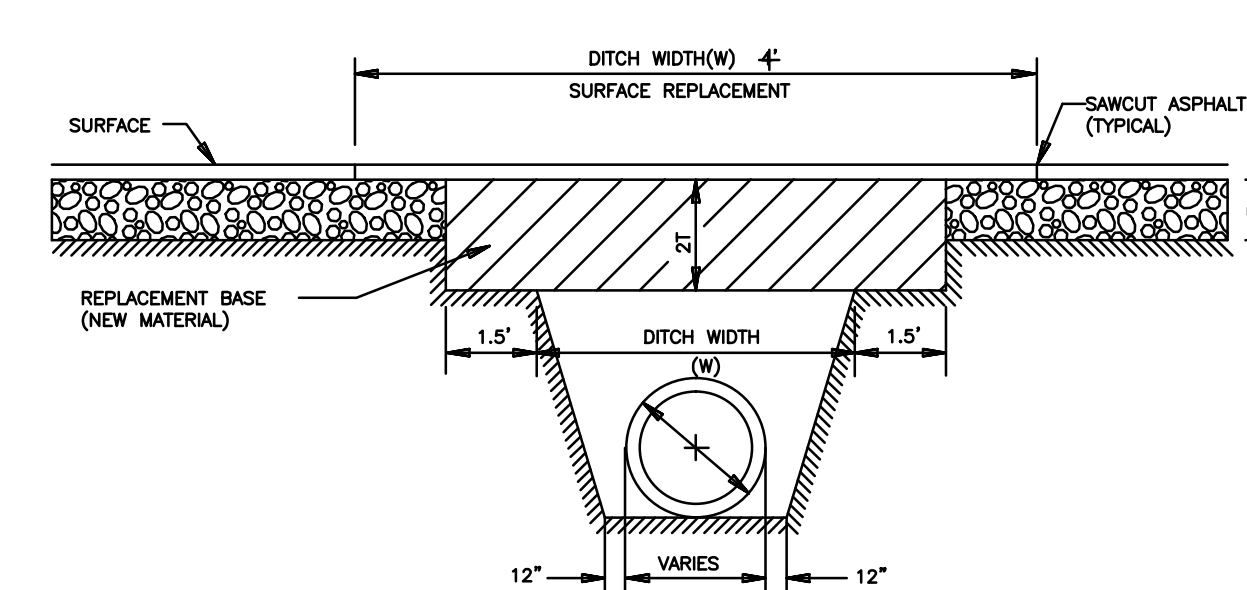
STANDARD DETAIL



REPLACES FORMER DWG NO. 180
REVISED 2/23/2011
TYPICAL TRENCH BACKFILL
FIGURE 180



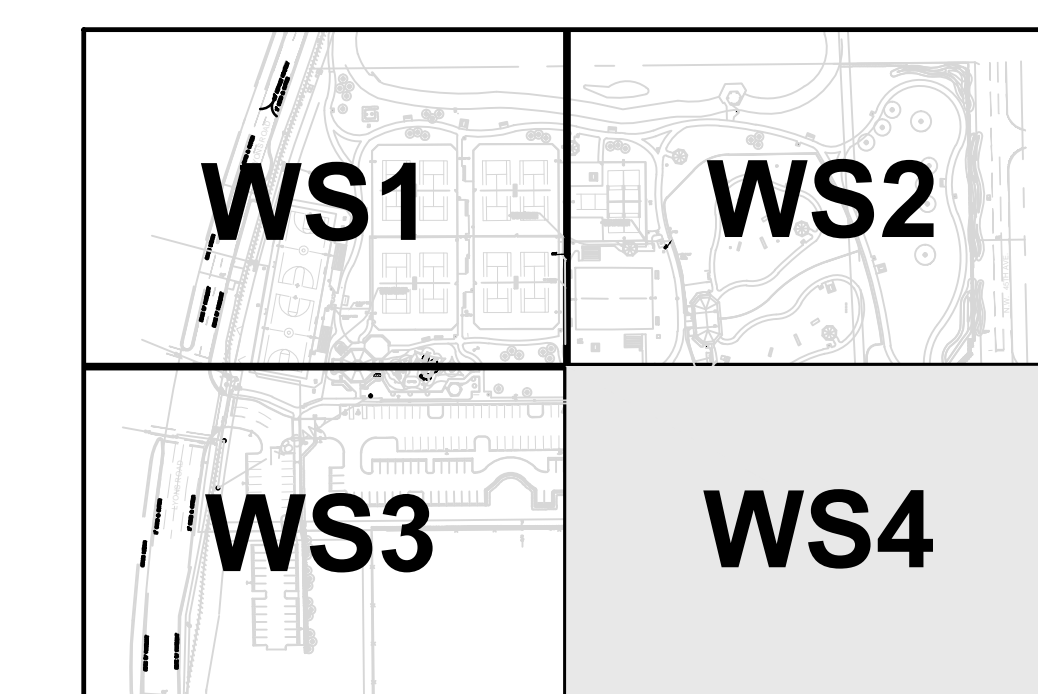
- RESTORATION OF ROADWAY CUT FOR UTILITY INSTALLATION PARALLEL**
- NOTES:
1. BASE MATERIAL SHALL HAVE A MINIMUM LBR OF 100 AND A MINIMUM CARBONATE CONTENT OF 70% (80% FOR LOCAL STREETS).
 2. BASE SHALL BE PLACED IN 6" MAXIMUM THICKNESS LAYERS WITH EACH LAYER COMPACTED AS REQUIRED AND TESTED PRIOR TO THE PLACEMENT OF THE SUCCEEDING LAYERS.
 3. SUBGRADE MATERIAL SHALL BE GRANULAR AND ANGULAR AND SHALL HAVE A MINIMUM LBR. OF 40.
 4. BACKFILL SHALL BE PLACED AND COMPACTED IN 8" LAYERS, BUT TESTING WILL BEGIN 12" ABOVE THE INSTALLED FACILITY.
 5. ALL EDGES OF EXISTING ASPHALT PAVEMENT WHERE RESURFACING WILL ABUT SHALL BE SAW CUT IN STRAIGHT LINES PARALLEL TO OR PERPENDICULAR TO THE ROADWAY, PRIOR TO THE RESURFACING. 6. RESURFACING MATERIAL SHALL BE CONSISTENT WITH SURROUNDING SURFACE AND SHALL BE APPLIED A MINIMUM OF ONE INCH AND A MAXIMUM OF TWO INCHES IN THICKNESS.
 6. RESURFACING MATERIAL SHALL BE CONSISTENT WITH SURROUNDING SURFACE, AND SHALL BE APPLIED IN 2 LIFTS, A MINIMUM OF 3/4 INCH AND A MAXIMUM OF 2" IN THICKNESS.
 7. TRAFFIC STRIPES SHALL NOT BE PLACED DIRECTLY ON TOP OF THE JOINT.



- RESTORATION OF ROAD CUT FOR UTILITY CROSSING**
- NOTES:
1. REPLACED BASE MATERIAL OVER DITCH SHALL BE TWICE THE THICKNESS OF THE ORIGINAL BASE. MINIMUM 6" MAXIMUM 18".
 2. BASE MATERIAL SHALL BE PLACED IN 6" MAXIMUM (LOOSE MEASUREMENT) LAYERS AND EACH LAYER THOROUGHLY ROLLED OR TAMPED TO 98% OF MAXIMUM DENSITY, PER AASHTO T-190.
 3. ASPHALT CONCRETE PAVEMENT JOINTS SHALL BE MECHANICALLY SAWS.
 4. SURFACE MATERIAL SHALL BE CONSISTENT WITH THE SURROUNDING SURFACE MATERIAL.
 5. BASE MATERIAL SHALL HAVE A MINIMUM LBR OF 100 AND A MINIMUM CARBONATE CONTENT OF 70% (80% FOR LOCAL STREETS).
 6. IF THE DITCH IS FILLED TEMPORARILY, IT SHALL COVERED WITH A 2" THICK ASPHALTIC CONCRETE PATCH TO KEEP THE FILL MATERIAL FROM RAVELING, UNTIL REPLACED WITH A PERMANENT PAVEMENT PATCH.
 7. RESURFACING MATERIAL SHALL BE CONSISTENT WITH SURROUNDING SURFACE, AND SHALL BE APPLIED IN 2 LIFTS, A MINIMUM OF 3/4 INCH AND A MAXIMUM OF 2" IN THICKNESS.

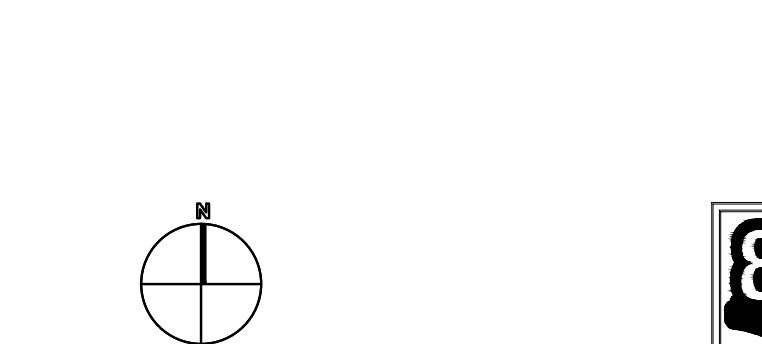
- WATER SERVICE NOTE:**
1. TRANSITION TO WATER FOUNTAIN CONNECTION WITH BRASS FITTINGS. ALL PLUMBING WORK TO BE PER FLORIDA BUILDING CODE.
 2. 6" MINIMUM VERTICAL SEPARATION SHALL BE MAINTAINED AT ALL UTILITY CROSSINGS.

DRC SUBMISSION
PRELIMINARY NOT FOR CONSTRUCTION
ELEVATIONS SHOWN ARE NGVD 29
(NAVD88=NGVD29-1.565')



KEY MAP (NTS)

- LEGEND**
- PROPOSED ASPHALT
 - PROPOSED CONCRETE



4 WATER AND SEWER PLAN AND DETAILS
1" = 20'-0"



www.call811.com