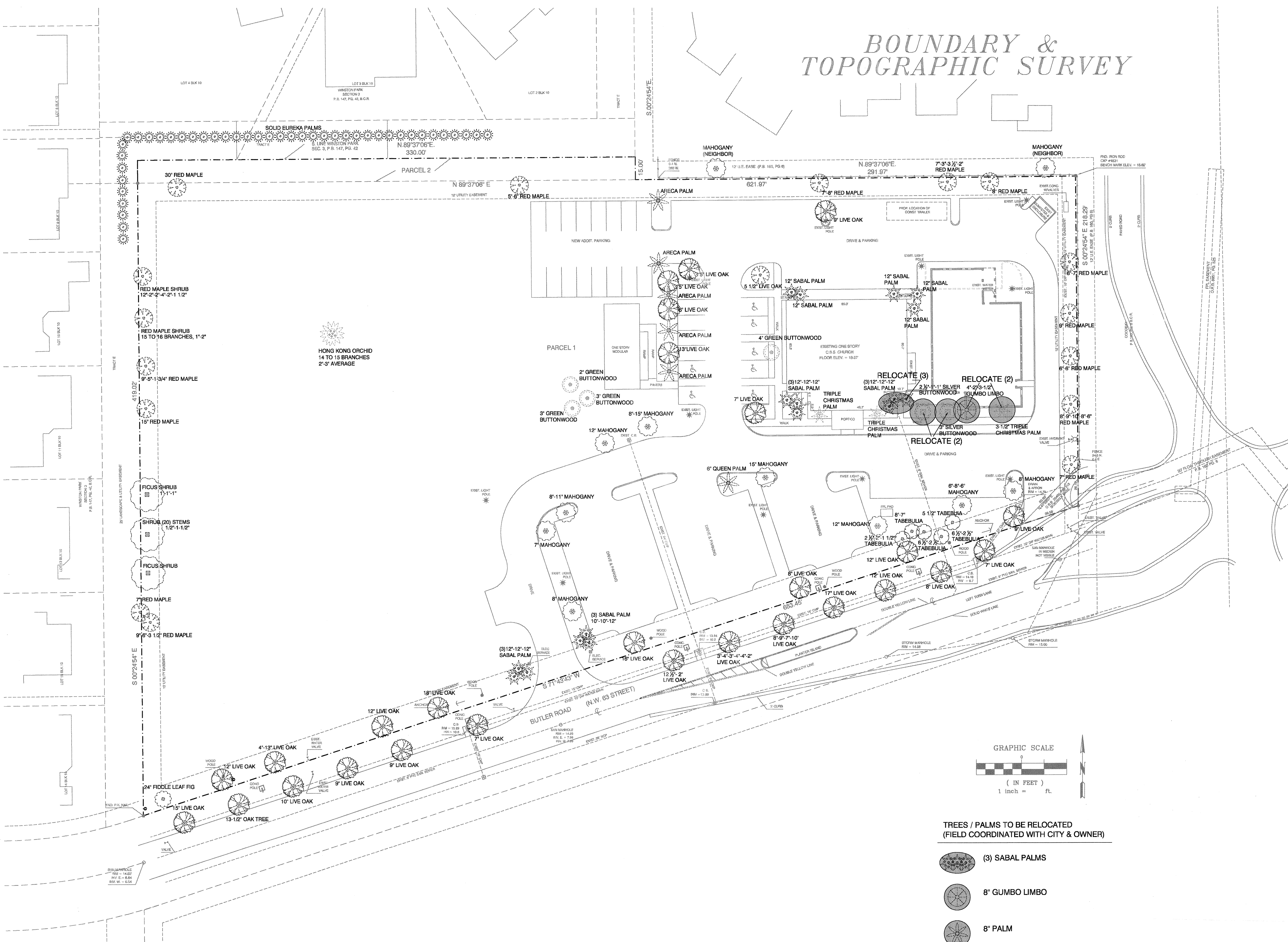



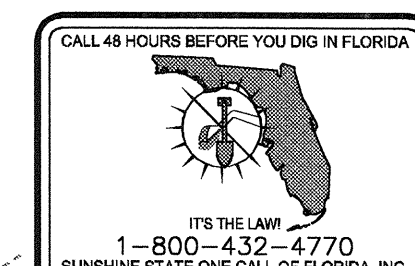


# BOUNDARY & TOPOGRAPHIC SURVEY



TREES / PALMS TO BE RELOCATED  
(FIELD COORDINATED WITH CITY & OWNER)

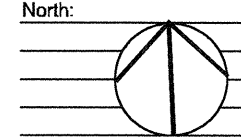
-  (3) SABAL PALMS
-  8" GUMBO LIMBO
-  8" PALM



**MURAKAMI**  
LANDSCAPE ARCHITECTS

325 NW 1st Avenue, Dade County, Florida 33444-3894  
561 276 7730  
FAX 561 276 7046

Revision:	



Scale: 1" = 30'

Job Number:

Project Name:

Drawing Name:

Checked By:

Date: August 16, 2011

Sheet Title:

OVERALL SITE  
PLAN, EXISTING TREES  
& MITIGATION  
(RELOCATION) PLAN

Sheet Number:

L-2