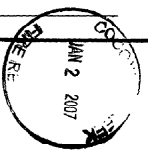


FABRICATED INDUSTRIAL PRODUCTS.

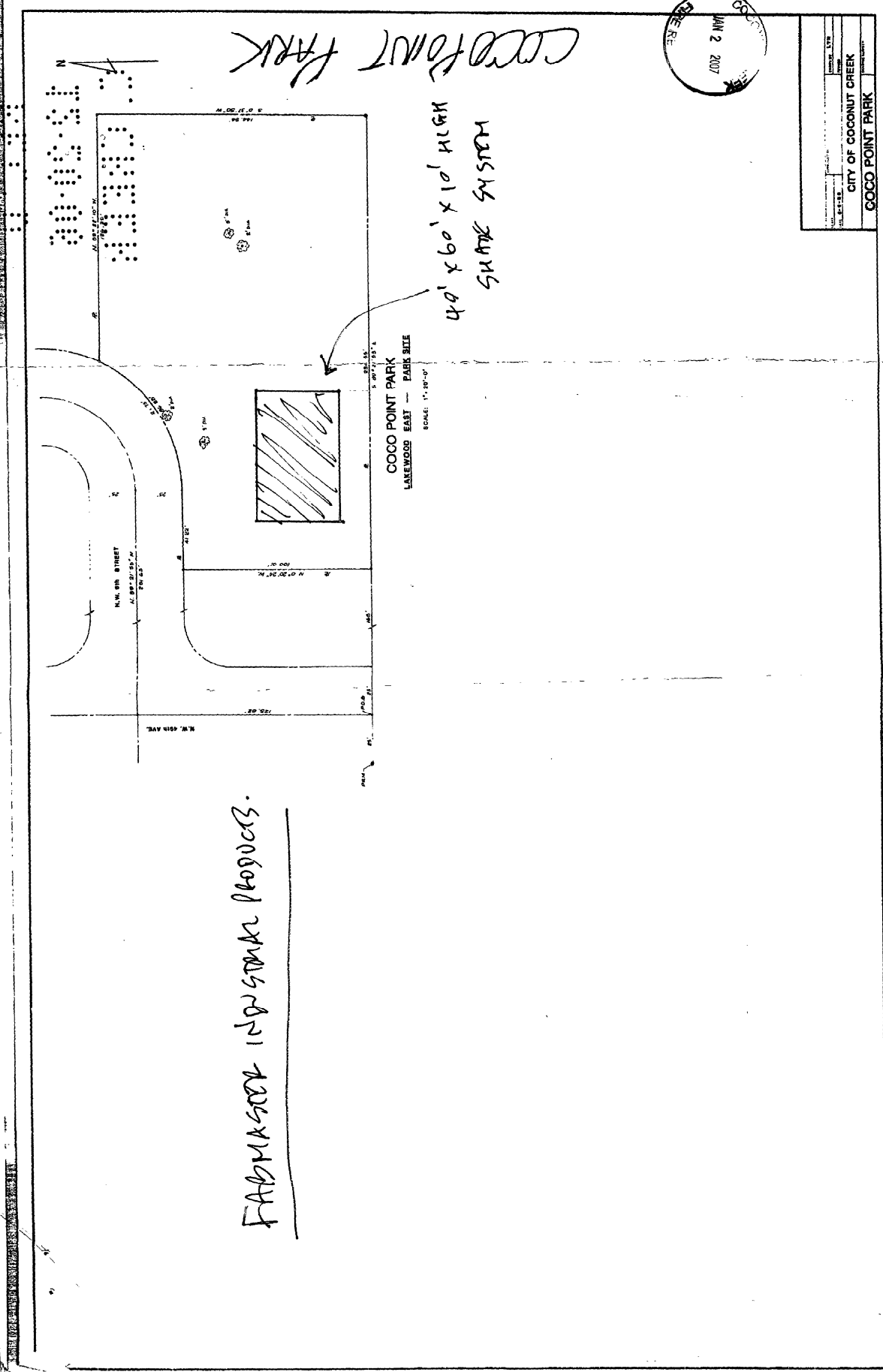
COCO POINT PARK



49' x 60' x 10' HIGH
SHADE SYSTEM

COCO POINT PARK
LANEWOOD EAST - PARK SITE
SCALE: 1" = 10'-0"

CITY OF COCONUT CREEK
COCO POINT PARK

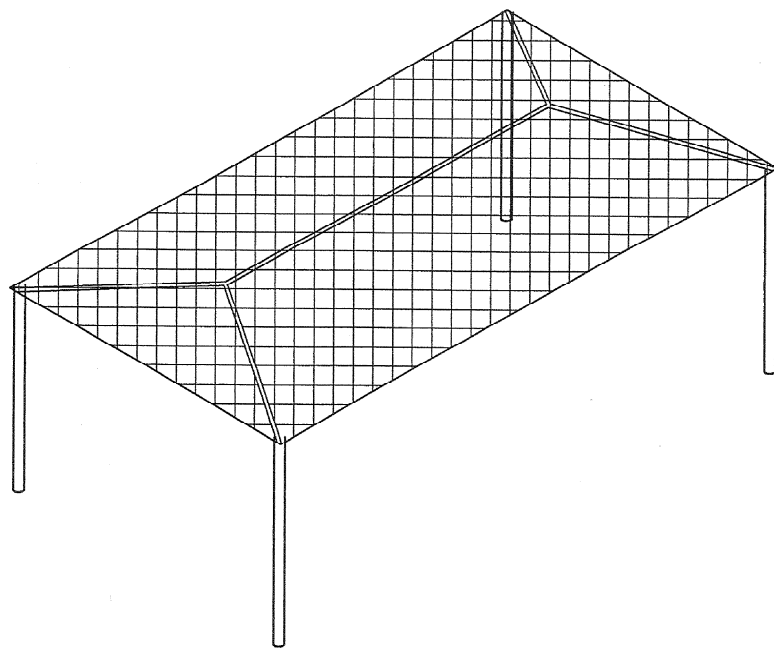


City of Coconut Creek
Development Services Department
Plans & Permits
Imaging Indexing Cover Page

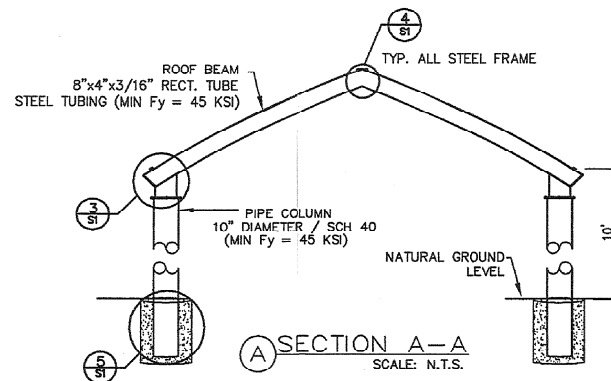
Thu Sep 11 2008

10:29:28

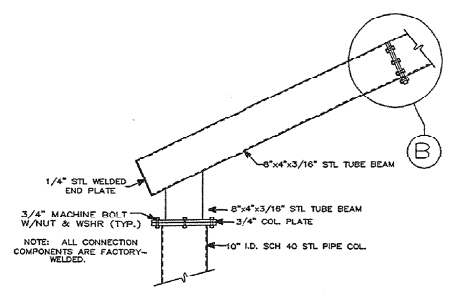
Parcel ID/Folio	484231110810
Permit Number	06006070
Permit Address	4870 NW 6 ST
Subdivision	COCONUT CREEK (SOUTH CREEK)
Lot	COCO PT
Block	PARK
Permit Type	AWNING
Contractor	FABMASTER INDUSTRIAL PRODUCTS
Plans No.	06006070



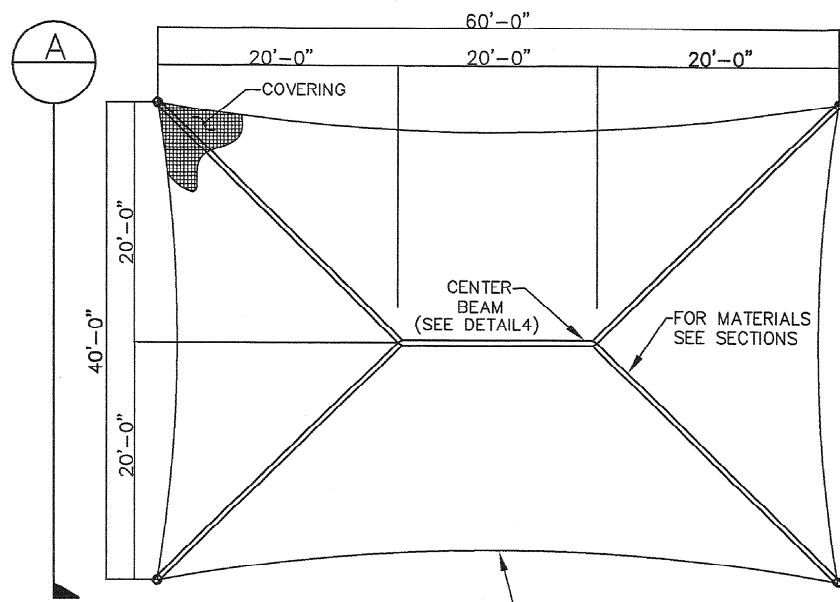
1 ISOMETRIC VIEW
SCALE: N.T.S.



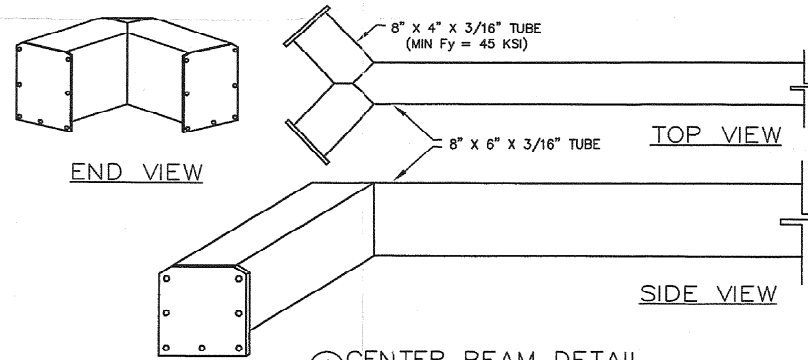
A SECTION A-A
SCALE: N.T.S.



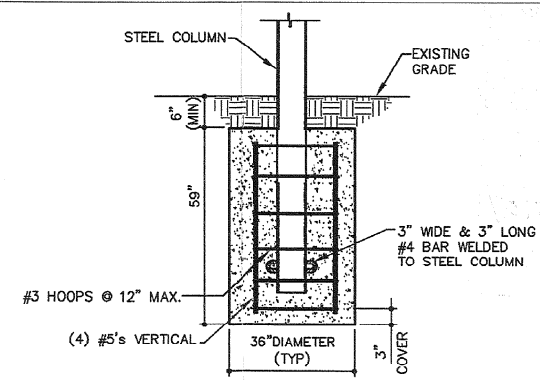
3 TYP. BEAM-TO-POST CONNECTION DETAIL
N.T.S.



2 PLAN VIEW
SCALE: N.T.S.



4 CENTER BEAM DETAIL
SCALE: N.T.S.



5 FOOTING
SCALE: N.T.S.

GENERAL NOTES:

1-THE SHADE STRUCTURE HAS BEEN DESIGNED IN ACCORDANCE WITH ASCE 7-02 TO THE FOLLOWING DESIGN CRITERIA:

STRUCTURE W/FABRIC CANOPY/REMOVED	0
-CATEGORY	0
-EXPOSURE	0
-IMPORTANCE FACTOR	0.77
-BASIC WIND SPEED	150 MPH
-DESIGN WIND PRESSURE	41.0 PSF
-DESIGN UPLIFT PRESSURE	66.0 PSF

2- THE FOUNDATION ASSUMES A MINIMUM SOIL BEARING CAPACITY OF 1700 PSF.

3- ALL FASTENERS SHALL BE STAINLESS STEEL, ZINC-PLATED, OR HOT DIPPED GALVANIZED.

4-THE FABRIC SYSTEM IS DESIGNED TO RELEASE WHEN WIND SPEED EXCEEDS 90 MPH, WHICH IS THE DESIGN LOAD ON THE STRUCTURE WITH FABRIC.

5-THE STRUCTURE HAS BEEN DESIGNED IN ACCORDANCE WITH SECTION 3105.4 OF THE FLORIDA BUILDING CODE COVERING THE DESIGN OF FABRIC-COVERED FRAMES. THIS SECTION REQUIRES THAT THE FRAMING MEMBERS BE DESIGNED FOR A WIND VELOCITY OF NOT LESS THAN 75 MPH WITH THE FABRIC ATTACHED. THIS STRUCTURE HAS BEEN DESIGNED FOR A MINIMUM WIND VELOCITY OF 90 MPH WITH THE FABRIC ATTACHED AND EXCEEDS THE REQUIREMENTS OF THE FBC.

STEEL:

1-STEEL PIPES SHALL HAVE A MINIMUM YIELD STRENGTH OF 50,000 PSI. STEEL PLATES SHALL CONFORM TO ASTM A501.

2-ALL TUBING MEMBERS SHALL BE FACTORY-WELDED TO AMERICAN WELDING SOCIETY (AWS) SPECIFICATIONS AND SHALL UTILIZE E70-S6 AND HAVE THE HIGHEST STANDARDS OF QUALITY WORKMANSHIP.

3-ALL WELDS SHALL BE FILLET WELDS WITH MAXIMUM PERMISSIBLE THROAT THICKNESS OR FULL PENETRATION GROOVE WELDS.

CONCRETE:

1-ALL CONCRETE SHALL BE MIXED AND PLACED IN ACCORDANCE WITH ACI 301-96.

2-CONCRETE SHALL HAVE A MINIMUM 28 DAY COMPRESSIVE STRENGTH (f_c) OF 2500 PSI. A PREBAGGED CONCRETE MIX HAVING A LISTED STRENGTH OF AT LEAST 2500 PSI THAT IS MIXED IN ACCORDANCE WITH THE MANUFACTURER'S RECOMMENDATIONS IS ACCEPTABLE FOR USE.

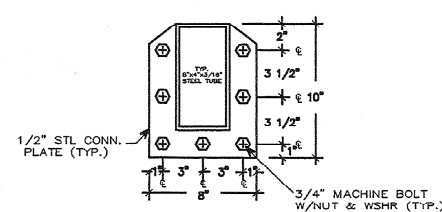
3-REINFORCING STEEL SHALL BE ASTM A-615 GRADE 60 WITH A MINIMUM YIELD STRENGTH (f_y) OF 60 KSI.

4-UNLESS OTHERWISE SHOWN, CONCRETE COVER SHALL BE 3" (MIN).

FABRIC:

1-FABRIC HAS A SIEVE FACTOR OF 64%.

NOTE TO OWNER:
OWNER ACCEPTS FULL RESPONSIBILITY FOR REMOVING THE FABRIC SHADE MATERIAL FROM THE STEEL FRAME WHEN SEVERE WEATHER CONDITIONS ARE PREDICTED. SUCH CONDITIONS INCLUDE PREDICTED WIND SPEEDS IN EXCESS OF 90 MPH. ALSO, AS STRUCTURE IS NOT DESIGNED FOR ANY SNOW LOAD, IT IS RECOMMENDED THAT CANOPY BE REMOVED WHEN SNOWFALL IS EXPECTED.



B TYP. BEAM-TO-BEAM CONNECTION DETAIL
N.T.S.

Manufactured by
Shade systems
4150 S.W. 19 Street
Ocala, FL 34474
Tel.: 1-800-609-6066

AXIOM ENGINEERING, Inc.
FLORIDA LIC. CA 8421
10211 W. Sample Road
Suite 106
Coral Springs, FL 33065
Phone: (954) 757-8666
Fax: (954) 757-7004

Coco Point Park
4870 NW 6th Street
Coconut Creek, FL 33063

Approved:
Edwin M. Faerman
DEC 13 2006
Edwin M. Faerman, P.E.
State of Florida License No. 46590

Revisions:

REP:
N/A

Scale: N.T.S.

Drawn: TT	Job No: 1619
Checked: AB/EMF	Sheet No: 2
Approved: AB/EMF	Date: 12/13/06



cc: [illegible]
cc: [illegible]
cc: [illegible]

OFFICE COPY

CITY OF COCONUT CREEK, DEVELOPMENT SERVICES
BROWARD COUNTY, FLORIDA

INSPECTIONS	APPROVED BY	DATE
LANDSCAPING	[Signature]	1/4/07
ENGINEERING	[Signature]	01/02/07
STRUCTURAL	[Signature]	1/2/07
ELECTRICAL		1/2/07
PLUMBING		
NOI COMPLIANT		

PERMIT # 06006070 DATE 1/5/07

NOTE:
THIS PERMIT EXPIRES IF CONSTRUCTION IS NOT BEGUN WITHIN 6 MO.
FROM DATE OF PERMIT ISSUE. PLANS MUST BE ON JOB BEFORE ANY
INSPECTION WILL BE MADE.