

DRAWING INDEX	
ELECTRICAL DRAWINGS	
SHEET	SHEET NAME
G001	COVER SHEET
G002	POLE DATA & LEGEND NOTES
E001	LIGHTING PLAN & QUANTITIES
E002	ELECTRICAL DETAILS



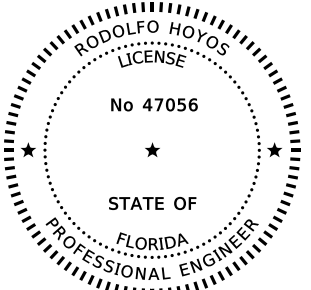
# DONALDSON PARK PARKING LOT LIGHTING PROJECT FOR THE CITY OF COCONUT CREEK

## PLAN SET



6861 S.W. 196th Avenue, Suite 302  
Pembroke Pines, Florida • 33332  
(954) 680-7771 • Fax: (954) 680-7781

**RD&E** Progressive Design & Engineering, Inc.  
10891 La Reina Road Suite 100 Delray Beach, FL 33446  
Tel: 561-498-2304 Fax: 561-498-2305  
CERTIFICATE OF AUTHORIZATION NO. 7151

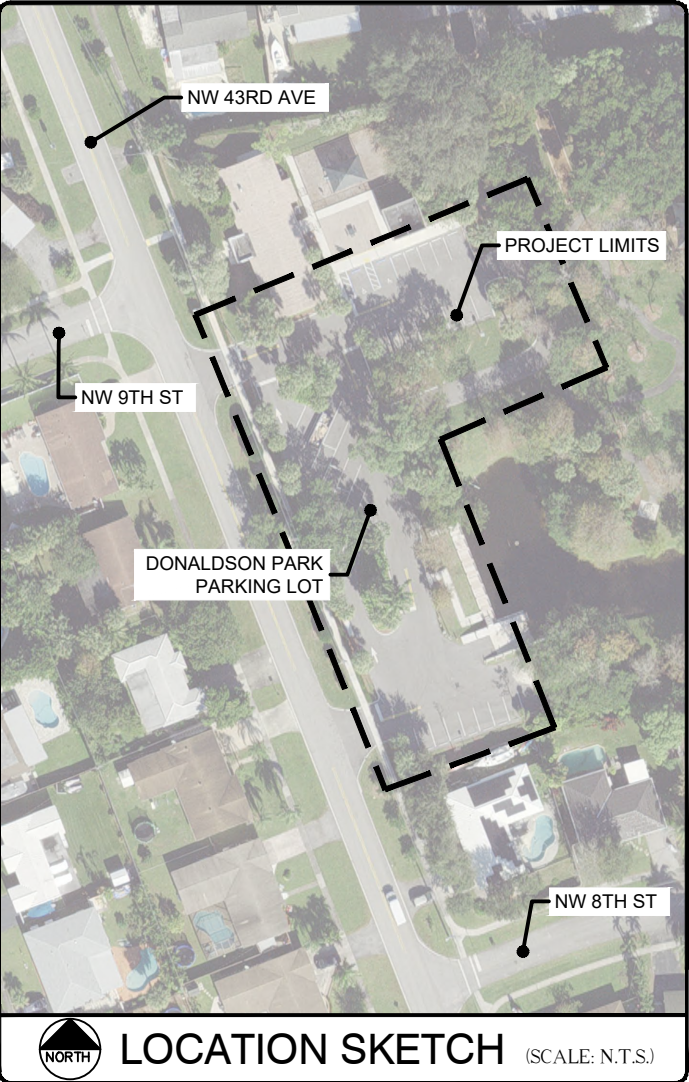


REVISIONS				
NO.	DATE	BY	CHK'D	DESCRIPTION

THIS ITEM HAS BEEN DIGITALLY SIGNED AND SEALED BY:

ON THE DATE ADJACENT TO THE SEAL.

PRINTED COPIES OF THIS DOCUMENT ARE NOT CONSIDERED SIGNED AND SEALED AND THE SIGNATURE MUST BE VERIFIED ON ANY ELECTRONIC COPIES.  
THE OFFICIAL RECORD OF THIS SHEET IS THE ELECTRONIC FILES DIGITALLY SIGNED AND SEALED UNDER RULE 61G15-23.004, F.A.C.



CITY OF COCONUT CREEK  
PUBLIC WORKS DEPARTMENT

CITY OF COCONUT CREEK OFFICIALS

JOSHUA RYDELL	MAYOR
SANDRA L. WELCH	VICE MAYOR
BECKY TOOLEY	COMMISSIONER
JACKIE RAILEY	COMMISSIONER
JOHN A. BRODIE	COMMISSIONER
KAREN BROOKS	CITY MANAGER
BRIAN ROSEN	CITY PROJECT MANAGER

**ENGINEER OF RECORD:**

RODOLFO HOYOS, P.E.      DATE:  
LICENSE NO. 47056

**DATE:** September 13, 2022  
**SHEET NAME:** G001  
**R.J. BEHAR PROJECT No.:** 22038

**LIGHTING NOTES:**

1. THE MAINTAINING AGENCY FOR THE LIGHTING SYSTEM IS THE CITY OF COCONUT CREEK.
2. GOVERNING STANDARDS AND SPECIFICATIONS ARE: THE F.D.O.T. STANDARD PLANS, THE FLORIDA DEPARTMENT OF TRANSPORTATION STANDARD SPECIFICATIONS FOR ROAD AND BRIDGE CONSTRUCTION, THE NATIONAL ELECTRIC CODE, AND THE NATIONAL ELECTRICAL SAFETY CODE OR LATER EDITION AND LOCAL CODES WHICH EXCEED THESE SPECIFICATIONS.
3. ENDS OF EXISTING/NEW CONDUITS SHALL BE SEALED WITH POLYURETHANE FOAM AFTER WIRING IS COMPLETE. FOAM SEAL SHALL NOT BE USED AS A MEANS TO PROTECT CONDUCTORS FROM ABRASION IN RACEWAYS.
4. A SLUG SHALL BE INSERTED IN THE GROUNDED (NEUTRAL SIDE) OF FUSEHOLDERS.
5. GROUND CONDUCTOR, IF NEEDED, SHALL HAVE A GREEN JACKET, TYPE THWN-2, AND SHALL NOT BE SMALLER THAN NO. 6 AWG.
6. LIGHT POLE FOUNDATION SHALL BE CONCRETE AS PER INDEX 715-002 AND DETAILS IN PLANS.
7. LIGHT POLE FOUNDATIONS SHALL BE INSTALLED AT A GRADE THAT IS FLUSH WITH THE ADJACENT AND SURROUNDING SIDEWALK.
8. THE POLE FOUNDATION CONDUITS SHALL EXTEND FROM 1" TO 2" INSIDE THE POLE BASE.
9. ONCE THE LIGHTING SYSTEM IS SUBSTANTIALLY COMPLETE, THE CONTRACTOR SHALL CONTACT THE ENGINEER FOR A FINAL INSPECTION OF THE LIGHTING CONSTRUCTION.
10. THE LOCATION OF THE UTILITIES SHOWN IN THE PLANS ARE APPROXIMATE. THE EXACT LOCATION SHALL BE DETERMINED BY THE CONTRACTOR AND THE UTILITY OWNERS DURING CONSTRUCTION.
11. SUBMITTAL DATA PRIOR TO ANY PROCUREMENT ORDER THE CONTRACTOR SHALL SUBMIT FOR APPROVAL, EQUIPMENT SPECIFICATIONS OR DESIGN DATA FOR ALL MATERIALS PROPOSED FOR THE PROJECT AND SHALL INCLUDE, BUT NOT LIMITED TO:
  - A. CONDUCTORS, CONDUIT, GROUND RODS AND PULL BOXES.
  - B. FUSES, FUSE HOLDERS, SURGE PROTECTORS AND POLE CABLE DISTRIBUTION SYSTEMS.
  - C. STRUCTURAL CALCULATIONS FOR LIGHT POLE ASSEMBLY SHOWING IT MEETS 160 MPH WIND LOAD. CALCULATIONS SHALL BE SIGNED AND SEALED BY A FLORIDA LICENSED ENGINEER.

SUBMIT THE SHOP DRAWINGS AND DESIGN DATA DIGITALLY TO THE ENGINEER, ALLOW A 15 DAY TURNAROUND FOR SUBMITTALS.
12. ALL FEATURES IMPACTED DURING THE CONSTRUCTION OF THE LIGHTING SYSTEM (LANDSCAPING, IRRIGATION, SIDEWALK, ETC.) SHALL BE RESTORED TO ITS ORIGINAL CONDITION, AS A MINIMUM.
13. THE CONTRACTOR SHALL NOTIFY UTILITY OWNERS THROUGH SUNSHINE ONE CALL OF FLORIDA INC. (1-800-432-4770) AND UTILITY OWNERS LISTED BELOW 2 FULL BUSINESS DAYS IN ADVANCE OF BEGINNING CONSTRUCTION ON THE JOB SITE:

UTILITY OWNERS	TELEPHONE NUMBERS	CONTACT PERSON
COMCAST CABLE	786-586-8505	RICARDO DAVIDSON
CITY OF COCONUT CREEK	954-545-6655	EILEEN CABRERA
CITY OF MARGATE	954-972-0828 EXT. 237	RANDY DANIEL
FLORIDA POWER & LIGHT-BROWARD	386-586-6403	JOEL BRAY
AT&T DISTRIBUTION	561-683-2729	DINO FARRUGGIO

14. CONTRACTOR SHALL ENSURE THAT LIGHT POLES INTENDED TO HAVE TYPE III AND TYPE V DISTRIBUTIONS ARE INSTALLED CORRECTLY ON EACH POLE, SEE NOTE 3 UNDER POLE DATA TABLE. CONTRACTOR SHALL DEMONSTRATE THIS AT THE FINAL INSPECTION.

**LEGEND AND DESCRIPTION**

	PROPERTY LINE		AT&T OVERHEAD UTILITY		FENCE LINE
	BASELINE W/ STATIONING		SEWER ACCESS POINT		BOLLARD
	CATCH BASIN		MAILBOX		SIGNAGE
	STORMWATER MANHOLE		BENCH		NEW ALUMINUM POLE, ARM, LUMINAIRE AND FOUNDATION. SEE ELECTRICAL DETAILS SHEET.
	UTILITY POLE		TRASH CAN		
	CONCRETE		ELECTRIC UTILITY		
	ASPHALT		WATER METER		
	PAVERS		HYDRANT		
	UNDERGROUND COMCAST LINE		UTILITY BOX		
	UNDERGROUND FPL LINE		EXISTING STRUCTURES		
	STORMWATER LINE		GATE		
	WATER LINE		WHEEL STOP		
	SANITARY SEWER				



**GENERAL NOTES:**

1. ALL CONSTRUCTION AND MATERIALS SHALL CONFORM TO THE STANDARDS AND SPECIFICATIONS OF THE CITY OF COCONUT CREEK, FLORIDA DEPARTMENT OF TRANSPORTATION, FLORIDA DEPARTMENT OF ENVIRONMENTAL PROTECTION, BROWARD COUNTY HEALTH DEPARTMENT, BROWARD COUNTY DEPARTMENT OF ENVIRONMENTAL PROTECTION AND GROWTH MANAGEMENT, FLORIDA BUILDING CODE (LATEST EDITION), AND ALL OTHER LOCAL AND NATIONAL CODES WHERE APPLICABLE.
2. ALL CONSTRUCTION SHALL BE DONE IN A SAFE MANNER, SPECIFICALLY, THE RULES AND REGULATIONS OF THE OCCUPATIONAL SAFETY AND HEALTH ADMINISTRATION AND THE MANUAL OF UNIFORM TRAFFIC CONTROL DEVICES SHALL BE STRICTLY OBSERVED.
3. ALL ELEVATIONS ON THE DRAWINGS OR REFERENCED IN THE SPECIFICATIONS ARE BASED ON NORTH AMERICAN VERTICAL DATUM OF 1988.
4. THE CONTRACTOR SHALL OBTAIN THE SERVICES OF A UTILITY LOCATION SERVICE SUCH AS "SUNSHINE STATE ONE CALL OF FLA, INC." AT (800) 432-4770 AT LEAST 48 HOURS PRIOR TO BEGINNING ANY EXCAVATION.
5. EXISTING UTILITY LOCATIONS SHOWN ON THESE DRAWINGS ARE APPROXIMATE. THE ENGINEER ASSUMES NO RESPONSIBILITY FOR THE ACCURACY OF EXISTING UTILITIES SHOWN OR FOR ANY EXISTING UTILITIES NOT SHOWN.
6. PRIOR TO BEGINNING CONSTRUCTION, THE CONTRACTOR SHALL VERIFY THE SIZE LOCATION AND MATERIAL OF ALL EXISTING UTILITIES WITHIN THE AREA OF CONSTRUCTION.
7. IF UPON EXCAVATION, AN EXISTING UTILITY IS FOUND TO BE IN CONFLICT WITH THE PROPOSED CONSTRUCTION OR TO BE OF A SIZE OR MATERIAL DIFFERENT FROM THAT SHOWN ON THE DRAWINGS, THE CONTRACTOR SHALL IMMEDIATELY NOTIFY THE ENGINEER.
8. THE CONTRACTOR SHALL PERFORM ALL WORK NECESSARY TO LOCATE, EXCAVATE AND PREPARE FOR CONNECTIONS TO THE EXISTING SYSTEMS ALL AS SHOWN ON THE DRAWINGS. THE COST FOR THIS WORK AND FOR THE ACTUAL CONNECTION TO THE EXISTING SYSTEMS SHALL BE INCLUDED IN THE BID PRICE FOR THE PROJECT AND SHALL NOT RESULT IN ANY ADDITIONAL COST TO THE OWNER.
9. CONTRACTOR MUST PROVIDE FOR AND MAINTAIN ADEQUATE ACCESS AT ALL TIMES TO ALL BUSINESSES AND RESIDENCES AFFECTED BY PROGRESS OF THE WORK.
10. CONTRACTOR SHALL BE RESPONSIBLE TO REPAIR ANY DAMAGED INFRASTRUCTURE OR LANDSCAPE CAUSED BY THE CONSTRUCTION.
11. PROJECT SITE SAFETY:
  - A. THE CONTRACTOR IS SOLELY RESPONSIBLE FOR JOBSITE SAFETY, AND WARRANTS THAT THIS INTENT IS MADE EVIDENT BY THE AGREEMENT BETWEEN OWNER AND CONTRACTOR.
  - B. ALL EXISTING OVERHEAD AND UNDERGROUND UTILITIES SHOWN ON THESE DRAWINGS OR ENCOUNTERED THROUGH THE PROGRESSION OF WORK AT THIS PROJECT SITE ARE ASSUMED TO BE LIVE, CONTRACTOR SHALL BE RESPONSIBLE FOR ALL SAFETY PRECAUTIONS WHEN WORKING AROUND EXISTING OVERHEAD OR UNDERGROUND UTILITIES. VALVE BOXES AND MANHOLE RIM ELEVATIONS SHOWN ARE APPROXIMATE.

**POLE DATA**

POLE NO.	CIRCUIT	STATION	DIST. OR ARM	LUMINAIRE WATTAGE	MOUNTING HEIGHT	POLE SETBACK	PAY ITEM
1	EXIST	STA. 1+56 LT	20 IN	105W	12 FT	SEE NOTE 2	715-536-110
2	EXIST	STA. 1+68 RT	20 IN	105W	12 FT	SEE NOTE 2	715-536-110
3	EXIST	STA. 1+85 RT	20 IN	105W	12 FT	SEE NOTE 2	715-536-110
4	EXIST	STA. 2+13 LT	20 IN	105W	12 FT	SEE NOTE 2	715-536-110
5	EXIST	STA. 0+82 RT	20 IN	105W	12 FT	SEE NOTE 2	715-536-110
6	EXIST	STA. 0+36 RT	20 IN	105W	12 FT	SEE NOTE 2	715-536-110
7	EXIST	STA. 2+23 RT	20 IN	105W	12 FT	SEE NOTE 2	715-536-110
8	EXIST	STA. 1+38 LT	20 IN	105W	12 FT	SEE NOTE 2	715-536-110
9	EXIST	STA. 0+65 RT	20 IN	105W	12 FT	SEE NOTE 2	715-536-110

- NOTES:
1. POLE SETBACK IS THE DISTANCE MEASURED FROM EDGE OF S/W OR ASPHALT, TO THE FACE OF POLE.
  2. LIGHT POLE SHOULD BE REPLACED AT EXISTING LOCATION. MAINTAIN, AT MINIMUM, THE SAME SETBACK DISTANCE FROM THE EDGE OF THE ASPHALT PARKING AREA TO THE FACE OF THE LIGHT POLE.
  3. LUMINAIRES FOR POLES 1, 4, & 6 SHALL HAVE A TYPE III DISTRIBUTION AND BE REFERRED TO AS LUMINAIRE TYPE C. LUMINAIRES FOR POLES 2, 3, 5, 7, 8, & 9 SHALL HAVE A TYPE V DISTRIBUTION AND BE REFERRED TO AS LUMINAIRE TYPE D.

**WIND LOAD DESIGN CRITERIA**  
WIND SPEED ..... 160 MPH

**R.J. Behar & Company, Inc.**  
Engineers • Planners  
6861 S.W. 198TH AVE., SUITE 302  
PEMBROKE PINES, FL 33332  
PH: 954-880-7771, FAX: 954-880-7781



**POLE DATA, LEGEND & NOTES**  
**DONALDSON PARK PARKING LOT LIGHTING**  
CITY OF COCONUT CREEK  
100% PLANS

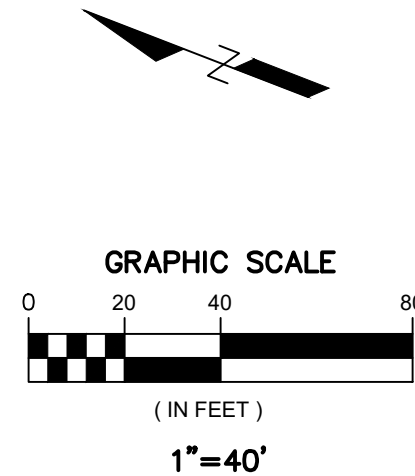
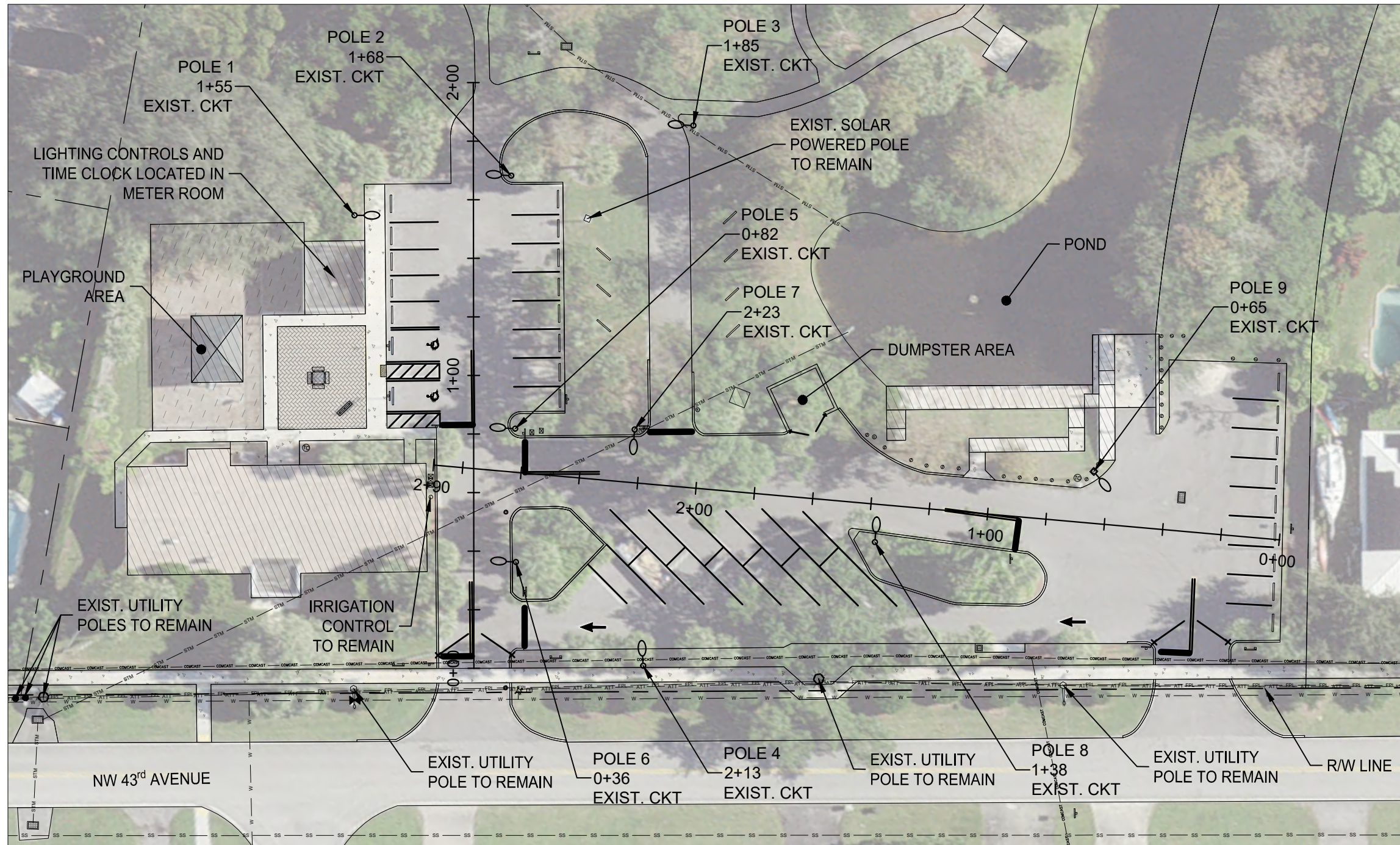
RJB Proj. No:	22038
Date:	August 18, 2022
DESIGN:	RUDY
DRAWN:	AS
CHECK:	HM

REVISIONS:


SHEET NAME:  
**G002**

CONSULTANT:  
RODOLFO HOYOS  
P.E. LICENSE NO. 47056  
DATE:

F:\2038 DONALDSON PARK PARKING LOT LIGHTING\CADD\LIGHTING PLAN.dwg - Wednesday, September 21, 2022 8:42:14 AM



**R.J. Behar & Company, Inc.**  
 Engineers • Planners  
 6861 S.W. 198TH AVE., SUITE 302  
 PEMBROKE PINES, FL 33332  
 PH: 954-860-7771, FAX: 954-860-7781



**LIGHTING PLAN & QUANTITIES**  
 DONALDSON PARK PARKING LOT LIGHTING  
 CITY OF COCONUT CREEK  
 100% PLANS

RJB Proj. No: 22038  
 Date: August 18, 2022  
 DESIGN: RUDY | DRAWN: AS | CHECK: HM  
 REVISIONS:

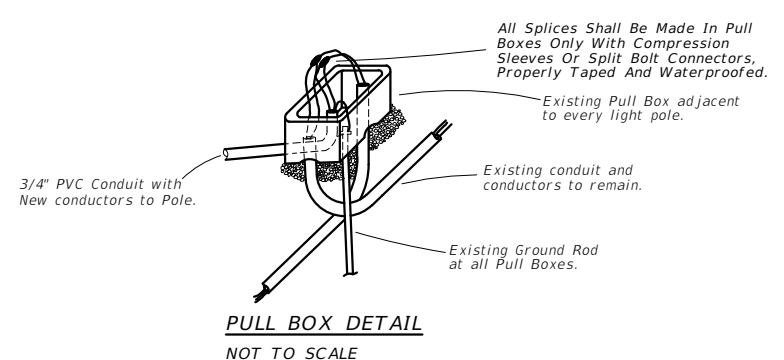
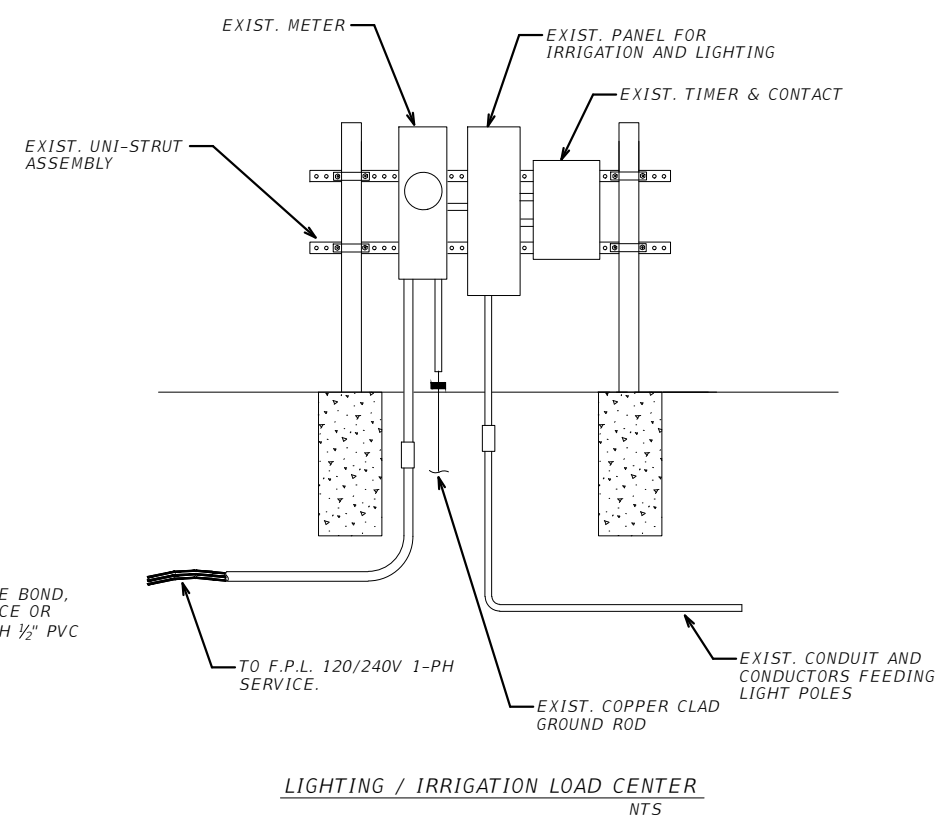
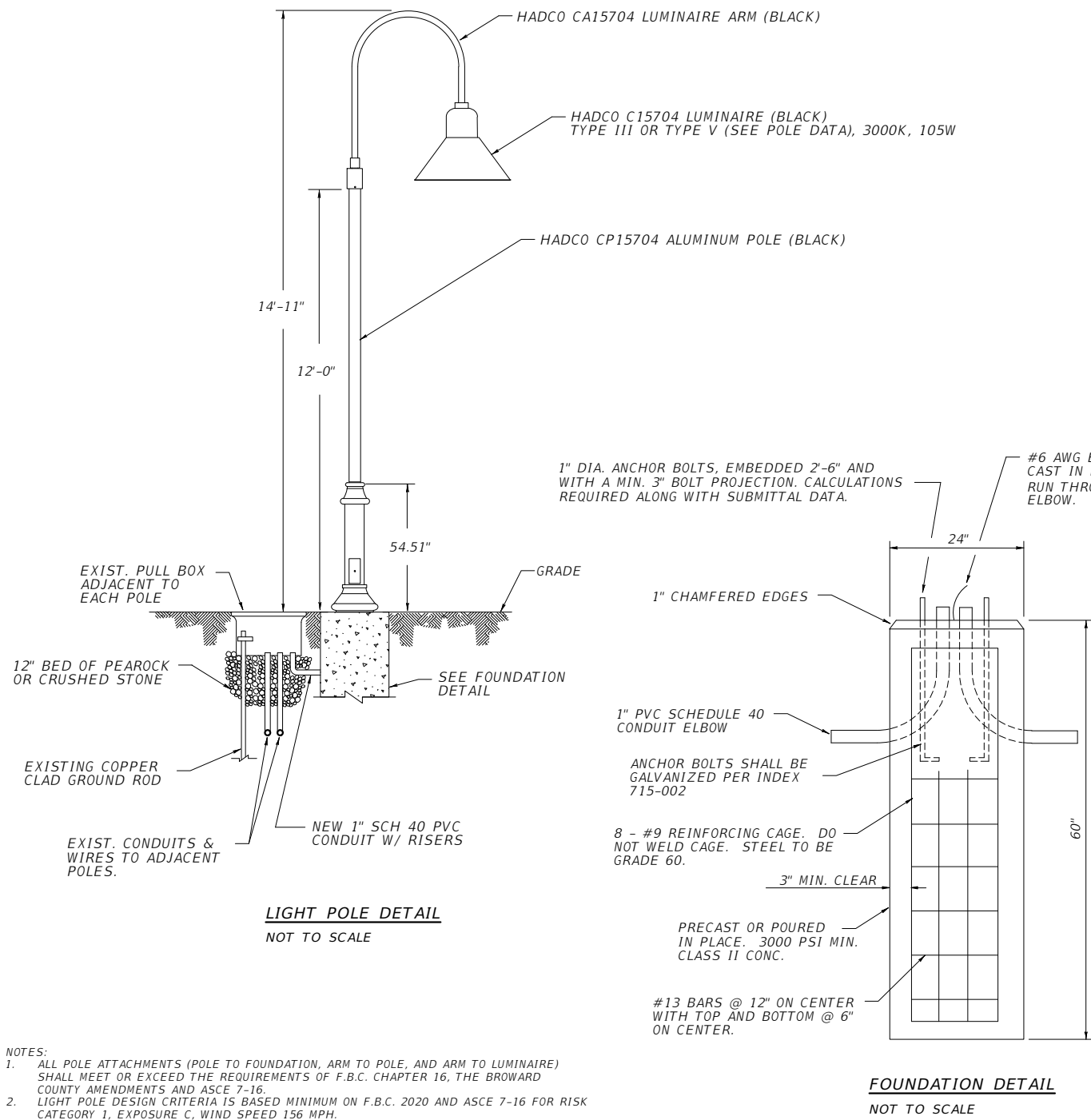

SHEET NAME:  
**E001**

TABULATION OF QUANTITIES				
PAY ITEM NO.	DESCRIPTION	UNIT	TOTAL	
			PLAN	FINAL
630-2-11	CONDUIT, FURNISH & INSTALL, OPEN TRENCH (1" SCH 40 PVC)	LF	27	
715-10-2	LIGHT POLE FOUNDATION, F&I	EA	9	
715-69-000	LIGHT POLE COMPLETE, REMOVE POLE AND FOUNDATION	EA	9	
715-500-1	POLE CABLE DISTRIBUTION SYSTEM, CONVENTIONAL	EA	9	
715-536-110	LIGHT POLE COMPLETE- SPECIAL DESIGN, INSTALL, POLE TOP MOUNT, ALUMINUM, 12'	EA	9	

630-2-11 INCLUDES THE COST OF 3 LF OF CONDUIT FROM PULL BOX TO LIGHT POLE AT EACH LOCATION.  
 715-69-000 INCLUDES THE REMOVAL AND DISPOSAL OF COMPLETE LIGHT POLE AND CONCRETE FOOTING.  
 715-536-110 CITY OF COCONUT CREEK WILL ADVANCE PROCURE THE LIGHT POLE ASSEMBLIES. INCLUDES THE COST OF OBTAINING LIGHT POLES AND TRANSPORTING THEM TO THE JOB SITE. LIGHT POLES WILL BE STORED AT THE CITY OF COCONUT CREEK, 4900 WEST COPANS ROAD. CONTACT BRIAN ROSEN AT (954) 545-6614 TO COORDINATE.

CONSULTANT:  
 RODOLFO HOYOS  
 P.E. LICENSE NO. 47056  
 DATE:

F:\22038 DONALDSON PARK PARKING LOT LIGHTING\CAD\ELECTRICAL DETAILS.dwg - Monday, November 7, 2022 9:28:37 AM



- NOTES:
1. ALL POLE ATTACHMENTS (POLE TO FOUNDATION, ARM TO POLE, AND ARM TO LUMINAIRE) SHALL MEET OR EXCEED THE REQUIREMENTS OF F.B.C. CHAPTER 16, THE BROWARD COUNTY AMENDMENTS AND ASCE 7-16.
  2. LIGHT POLE DESIGN CRITERIA IS BASED MINIMUM ON F.B.C. 2020 AND ASCE 7-16 FOR RISK CATEGORY 1, EXPOSURE C, WIND SPEED 156 MPH.



**ELECTRICAL DETAILS**  
**DONALDSON PARK PARKING LOT LIGHTING**  
CITY OF COCONUT CREEK  
100% PLANS

RJB Proj. No:	22038
Date:	November 7, 2022
DESIGN:	RUDY
DRAWN:	AS
CHECK:	HM
REVISIONS:	

SHEET NAME:  
**E002**

CONSULTANT:  
RODOLFO HOYOS  
P.E. LICENSE NO. 47056

DATE: