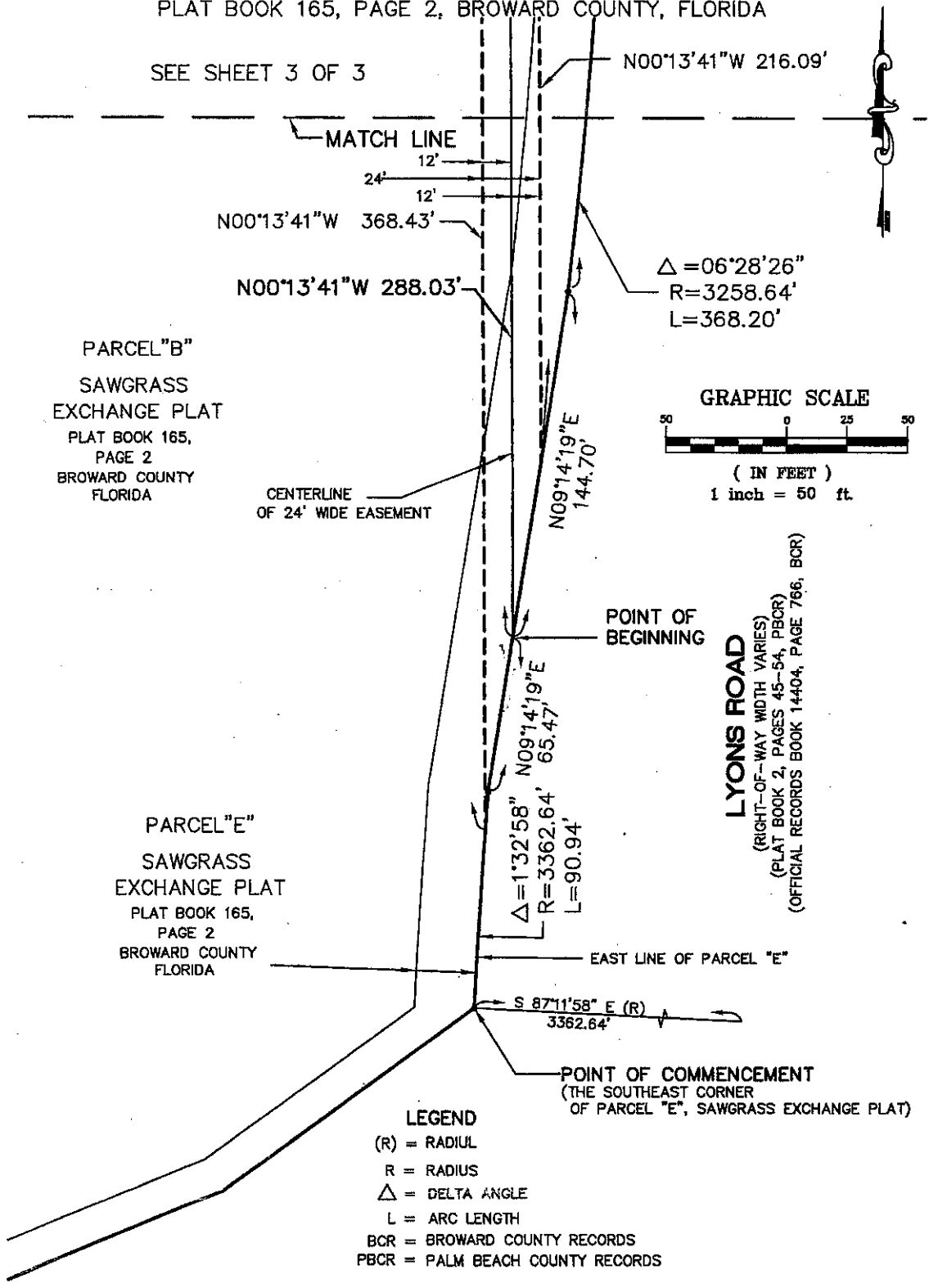


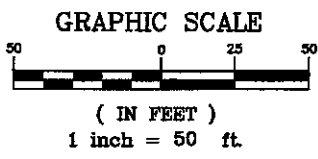
**SKETCH OF DESCRIPTION
24' UTILITY EASEMENT
PORTIONS OF PARCELS "B" AND "E", SAWGRASS EXCHANGE PLAT
PLAT BOOK 165, PAGE 2, BROWARD COUNTY, FLORIDA**

SEE SHEET 3 OF 3



PARCEL "B"
SAWGRASS
EXCHANGE PLAT
PLAT BOOK 165,
PAGE 2
BROWARD COUNTY
FLORIDA

PARCEL "E"
SAWGRASS
EXCHANGE PLAT
PLAT BOOK 165,
PAGE 2
BROWARD COUNTY
FLORIDA



LYONS ROAD
(RIGHT-OF-WAY WIDTH VARIES)
(PLAT BOOK 2, PAGES 45-54, PBCOR)
(OFFICIAL RECORDS BOOK 14404, PAGE 766, BCR)

- LEGEND**
- (R) = RADIUS
 - R = RADIUS
 - Δ = DELTA ANGLE
 - L = ARC LENGTH
 - BCR = BROWARD COUNTY RECORDS
 - PBCR = PALM BEACH COUNTY RECORDS

NOTE: SEE SHEET 1 OF 3, FOR DESCRIPTION,
SURVEYOR'S NOTES AND CERTIFICATION.

THIS IS NOT A SURVEY

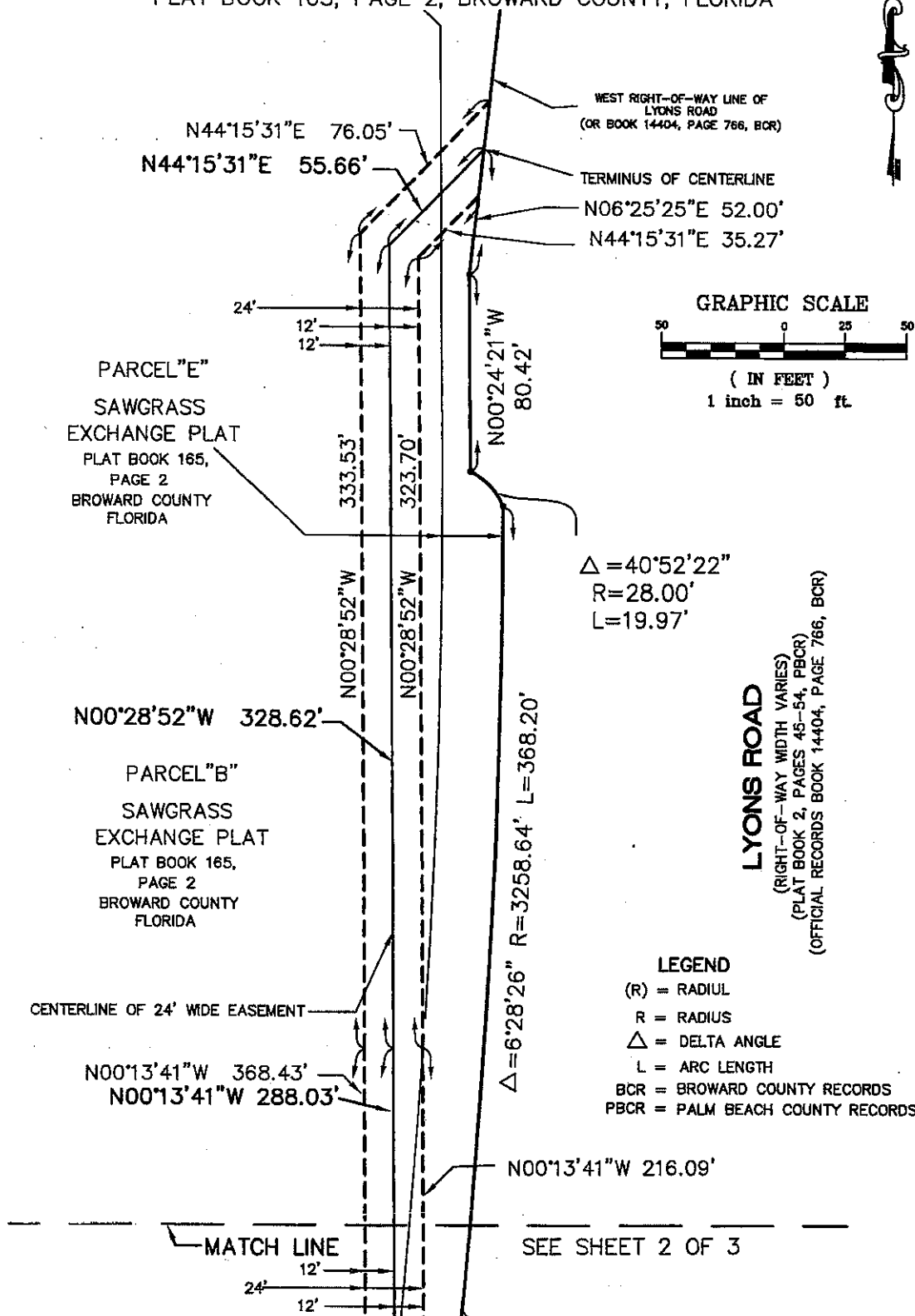
CREECH
ENGINEERS, INC.
CIVILIZATION ENGINEERS
2000 N.E. JENSEN BEACH BLVD., JENSEN BEACH, FLORIDA 34957 (772) 283-1413
OFFICES ALSO IN JUPITER, MELBOURNE AND TALLAHASSEE FL.
BOARD OF PROFESSIONAL ENGINEERS, CERTIFICATE OF AUTHORIZATION NUMBER 5139
PROFESSIONAL SURVEYORS AND MAPPERS, AMENDED CERTIFICATE NO. LB-0006705

**24' UTILITY EASEMENT
PORTION OF PARCELS "B" AND "E"
SAWGRASS EXCHANGE PLAT**

BROWARD COUNTY **FLORIDA**

PROJECT NO. 24128.01(18)	DATE: OCT. 25, 2006
CADD FILE: 24128.01-18EASE SCALE: 1" = 50'	SHEET 2 OF 3

EXHIBIT A
**SKETCH OF DESCRIPTION
 24' UTILITY EASEMENT**
 PORTIONS OF PARCELS "B" AND "E", SAWGRASS EXCHANGE PLAT
 PLAT BOOK 165, PAGE 2, BROWARD COUNTY, FLORIDA



LYONS ROAD
 (RIGHT-OF-WAY WIDTH VARIES)
 (PLAT BOOK 2, PAGES 45-54, PBCR)
 (OFFICIAL RECORDS BOOK 14404, PAGE 766, BCR)

LEGEND
 (R) = RADIUS
 R = RADIUS
 Δ = DELTA ANGLE
 L = ARC LENGTH
 BCR = BROWARD COUNTY RECORDS
 PBCR = PALM BEACH COUNTY RECORDS

NOTE: SEE SHEET 1 OF 3, FOR DESCRIPTION,
 SURVEYOR'S NOTES AND CERTIFICATION.

THIS IS NOT A SURVEY

CREECH ENGINEERS, INC.
 CIVILIZATION ENGINEERS
 2000 N.E. JENSEN BEACH BLVD., JENSEN BEACH, FLORIDA 34957 (772) 283-1413
 OFFICES ALSO IN JUPITER, MELBOURNE AND TALLAHASSEE FL
 BOARD OF PROFESSIONAL ENGINEERS, CERTIFICATE OF AUTHORIZATION NUMBER 5139
 PROFESSIONAL SURVEYORS AND MAPPERS, AMENDED CERTIFICATE NO. 13-0006728

**24' UTILITY EASEMENT
 A PORTION OF PARCELS "B" AND "E"
 SAWGRASS EXCHANGE PLAT**

BROWARD COUNTY FLORIDA
 PROJECT NO. 24128.01(18) DATE: OCT.25.2006
 CADD FILE:24128.01-18(EASE) SCALE: 1" = 50' SHEET 3 OF 3

DESCRIPTION TO ACCOMPANY SKETCH

24' UTILITY EASEMENT

PORTIONS OF PARCELS "B" AND "E", SAWGRASS EXCHANGE PLAT
PLAT BOOK 165, PAGE 2, BROWARD COUNTY, FLORIDA

LEGAL DESCRIPTION:

A STRIP OF LAND 24' WIDE, BEING A PORTION OF PARCEL "B" AND A PORTION OF PARCEL "E", SAWGRASS EXCHANGE PLAT, ACCORDING TO THE PLAT THEREOF, AS RECORDED IN PLAT BOOK 165, PAGE 2 OF THE PUBLIC RECORDS OF BROWARD COUNTY, FLORIDA, SAID 24' STRIP LYING 12' PARALLEL WITH AS MEASURED AT RIGHT ANGLES TO THE FOLLOWING DESCRIBED CENTERLINE:

COMMENCING AT THE SOUTHEAST CORNER OF SAID PARCEL "E", SAID POINT BEING A POINT ON A CURVE, CONCAVE TO THE EAST, HAVING A RADIUS OF 3,362.64 FEET AND WHOSE RADIUS POINT BEARS SOUTH 87°11'58" EAST; THENCE NORTHERLY ALONG THE EAST LINE OF SAID PARCEL "E" AND ARC OF SAID CURVE, THROUGH A CENTRAL ANGLE OF 01°32'58", A DISTANCE OF 90.94 FEET TO THE END OF SAID CURVE; THENCE NORTH 09°14'19" EAST, CONTINUING ALONG SAID EAST LINE, A DISTANCE OF 65.47' TO THE POINT OF BEGINNING OF SAID CENTERLINE; THENCE DEPARTING SAID EAST LINE, NORTH 00°13'41" WEST, A DISTANCE OF 288.03'; THENCE NORTH 00°28'52" WEST, A DISTANCE OF 328.62'; THENCE NORTH 44°15'31" EAST, A DISTANCE OF 55.66', TO AN INTERSECTION WITH THE WEST RIGHT-OF-WAY LINE OF LYONS ROAD, AS RECORDED IN OFFICIAL RECORDS BOOK 14404 AT PAGE 766, PUBLIC RECORDS OF BROWARD COUNTY, FLORIDA, AND THE TERMINUS OF SAID CENTERLINE.

THE SIDELINES OF SAID EASEMENT ARE EXTENDED OR TRUNCATED TO INTERSECT WITH THE EAST LINE OF SAID PARCEL "E" AND THE WEST RIGHT-OF-WAY LINE OF SAID LYONS ROAD AS RECORDED OFFICIAL RECORDS BOOK 14404, PAGE 766, BCR.

CONTAINING: 16,140 SQUARE FEET OR 0.37 ACRES MORE OR LESS.

SURVEYOR'S NOTES:

1. THE BEARINGS SHOWN HEREON ARE BASED UPON AN ASSUMED BEARING OF NORTH 89 DEGREES 37 MINUTES 06 SECONDS EAST ALONG THE NORTH LINE OF SAID PARCEL "E", AS SHOWN ON SAID "SAWGRASS EXCHANGE PLAT".
2. NO INSTRUMENTS OF RECORD REFLECTING EASEMENTS, RIGHTS-OF-WAY AND/OR OWNERSHIP WERE FURNISHED TO THE SURVEYOR EXCEPT AS SHOWN HEREON. NO OPINION OF TITLE IS EXPRESSED OR IMPLIED.

PATRICK B. MEEDS, P.S.M.
FLORIDA LICENSE No. LS - 4728
CORPORATION CERTIFICATE OF AUTHORIZATION No. LB 6705

Patrick B. Meeds
OCTOBER 30, 2006
DATE OF SIGNATURE

NOT VALID WITHOUT THE SIGNATURE AND ORIGINAL RAISED SEAL OF A FLORIDA LICENSED SURVEYOR AND MAPPER.

NOTE: SEE SHEETS 2 AND 3 OF 3, FOR SKETCH OF DESCRIPTION.
DESCRIPTION NOT VALID UNLESS ACCOMPANIED WITH SKETCH OF DESCRIPTION AS SHOWN ON SHEET 2 AND 3 OF 3, OF THIS DOCUMENT.

THIS IS NOT A SURVEY

CREECH
ENGINEERS, INC.

CIVILIZATION ENGINEERS
2000 N.E. JENSEN BEACH BLVD., JENSEN BEACH, FLORIDA 34657 (772) 263-1413
OFFICES ALSO IN JUPITER, MELBOURNE AND TALLAHASSEE FL.
BOARD OF PROFESSIONAL ENGINEERS, CERTIFICATE OF AUTHORIZATION NUMBER 6139
PROFESSIONAL SURVEYORS AND MAPPERS, AMENDED CERTIFICATE NO. LB-0006705

24' UTILITY EASEMENT
A PORTION OF PARCEL "B" AND "E"
SAWGRASS EXCHANGE PLAT

BROWARD COUNTY FLORIDA
PROJECT NO. 24128.01(18) DATE: OCT. 25, 2006
CADD FILE: 24128.01-18EASE SCALE: N/A SHEET 1 OF 3