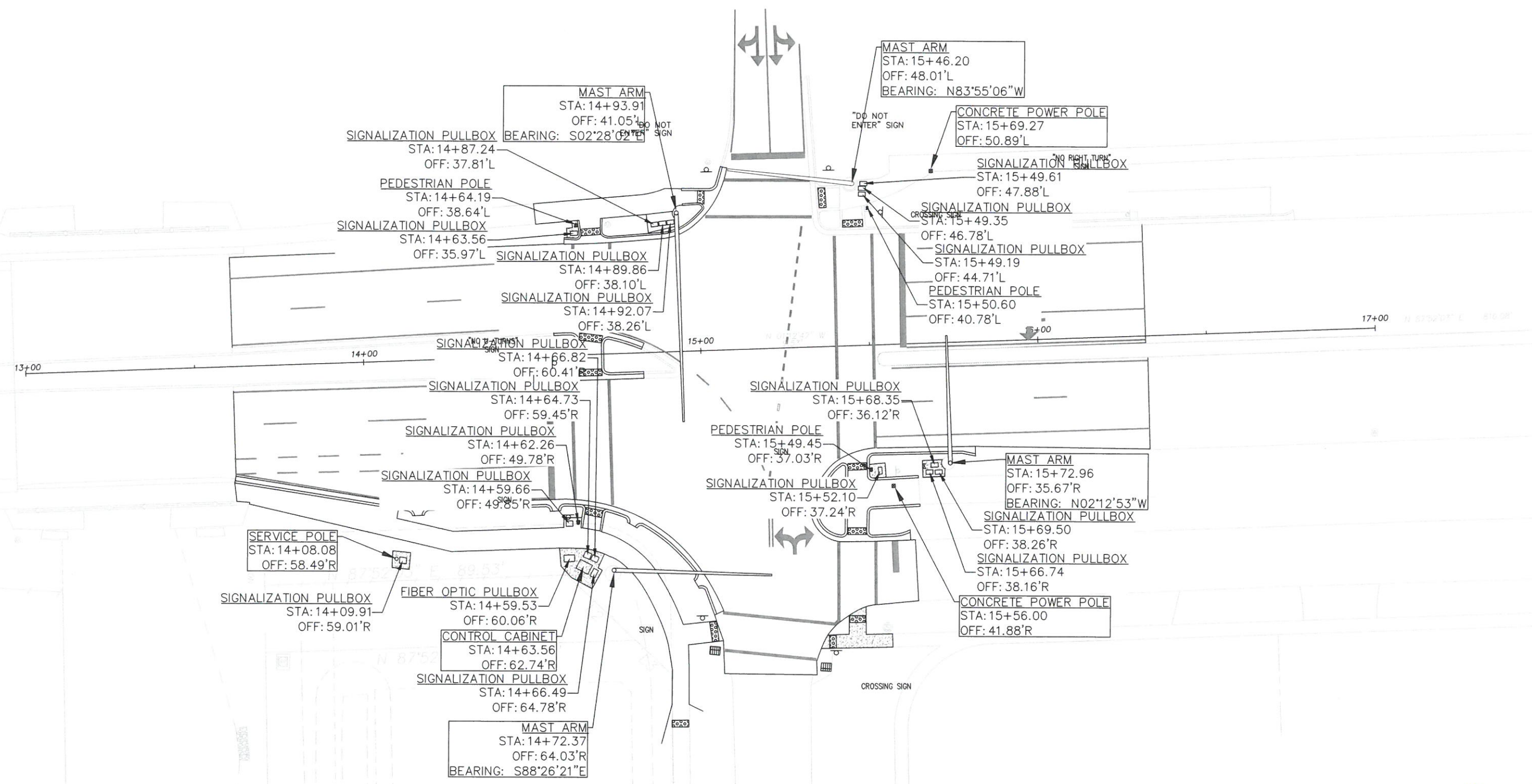


BROWARD COUNTY INTERSECTION IMPROVEMENTS

COCONUT CREEK PARKWAY & N.W. 45TH AVE
SIGNALIZATION AS-BUILTS



DRAWING DATA:
Drawing date: 01-08-2018
File name: N/A
Drafter: FTT
Checked: SJD
CADD org: 170684B
SHEET: 1 of 1

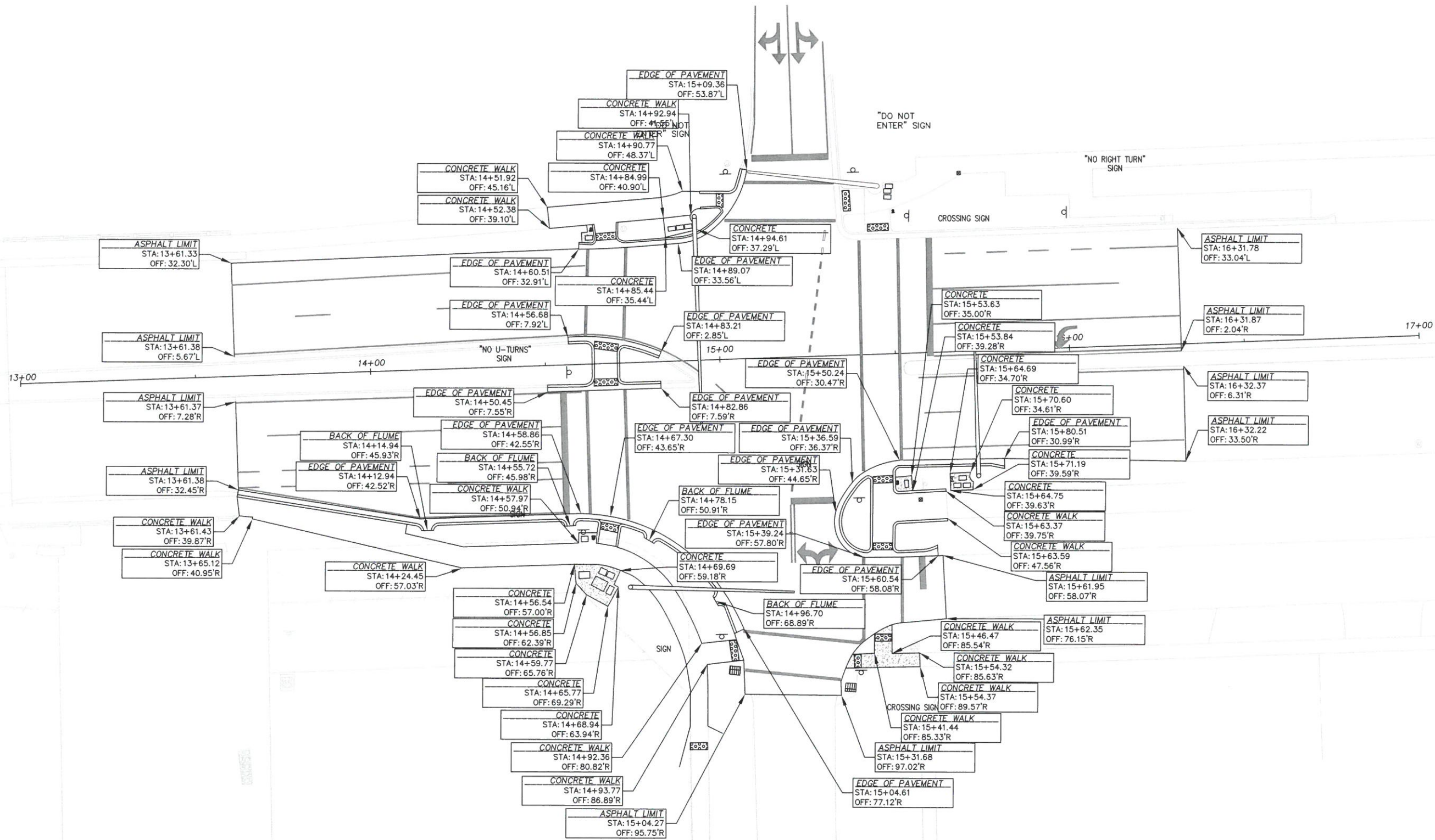
REVISIONS:	Description	Date	Ft/Pg

PREPARED BY: **DOUGLASS, LEAVY & ASSOCIATES INC.**
PROFESSIONAL SURVEYORS & MAPPERS
7914 WILES ROAD
CORAL SPRINGS, FLORIDA 33067
OFFICE: (954) 344-7994 FAX: (954) 344-2636
LICENSED BUSINESS No. 6727

For the Firm: 
Scott J. Douglass
Professional Surveyor & Mapper
Florida Registration No 4532

BROWARD COUNTY INTERSECTION IMPROVEMENTS

COCONUT CREEK PARKWAY & N.W. 45TH AVE
PAVEMENT GEOMETRY AS-BUILTS



DRAWING DATA
 Drawing date: 01-08-2018
 File source: N/A
 Drafter: FT
 Checked: SJD
 CADD pkg: 1704848
SHEET: 1 of 1

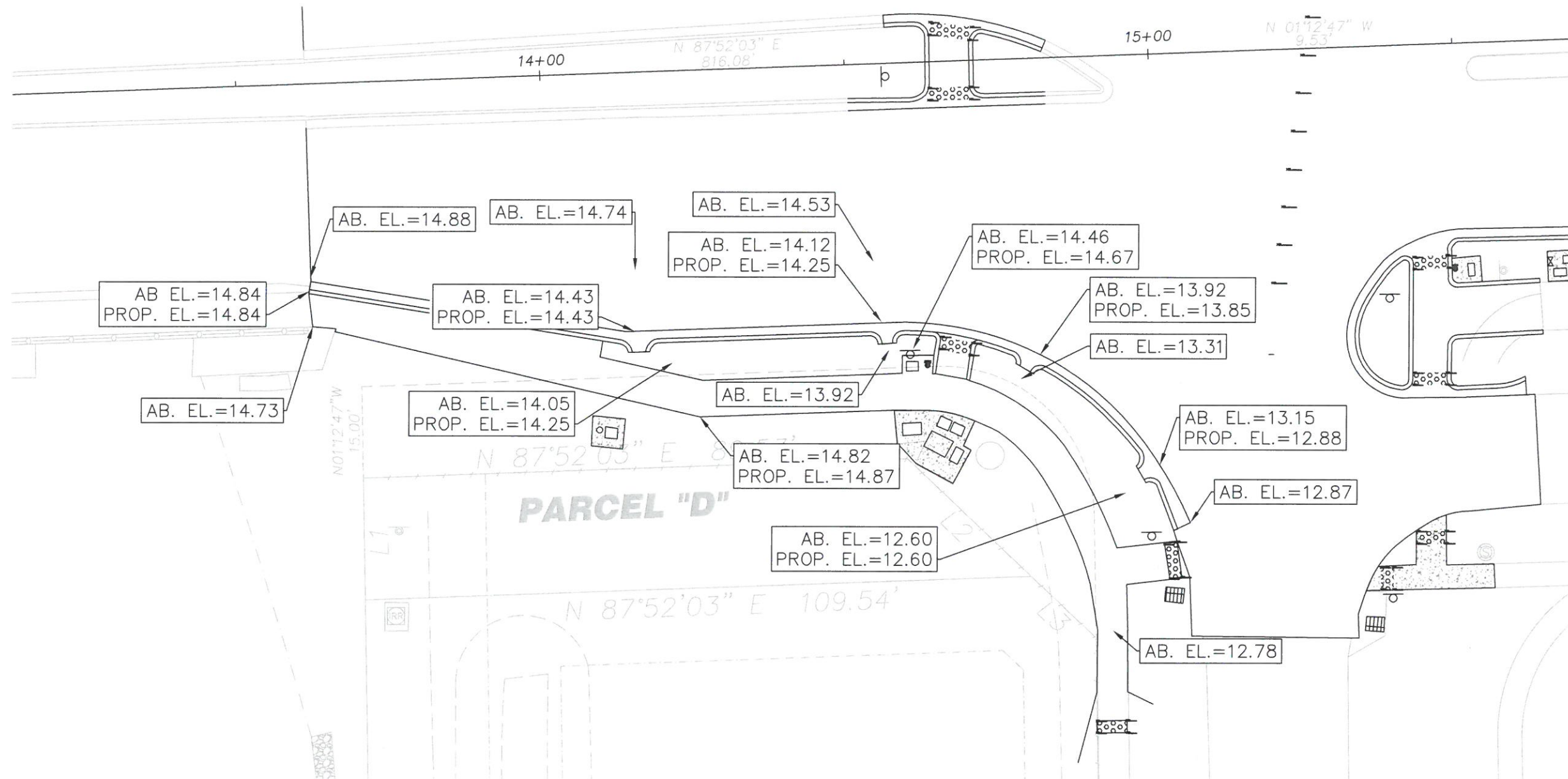
REVISIONS:	Description	Date	Fb/Pg

PREPARED BY: DOUGLASS, LEAVY & ASSOCIATES INC.
 PROFESSIONAL SURVEYORS & MAPPERS
 7914 WILES ROAD
 CORAL SPRINGS, FLORIDA 33067
 OFFICE: (954) 344-7994 FAX: (954) 344-2636
 LICENSED BUSINESS No. 6727

For the Firm 
 Scott J. Douglass
 Professional Surveyor & Mapper
 Florida Registration No 4532

BROWARD COUNTY INTERSECTION IMPROVEMENTS

COCONUT CREEK PARKWAY & N.W. 45TH AVE
PAVEMENT GEOMETRY AS-BUILTS



ABBREVIATION LEGEND

AB. EL. AS-BUILT ELEVATION
PROP. EL. PROPOSED ELEVATION

For the Firm:
Scott J. Douglass
Professional Surveyor & Mapper
Florida Registration No. 4532

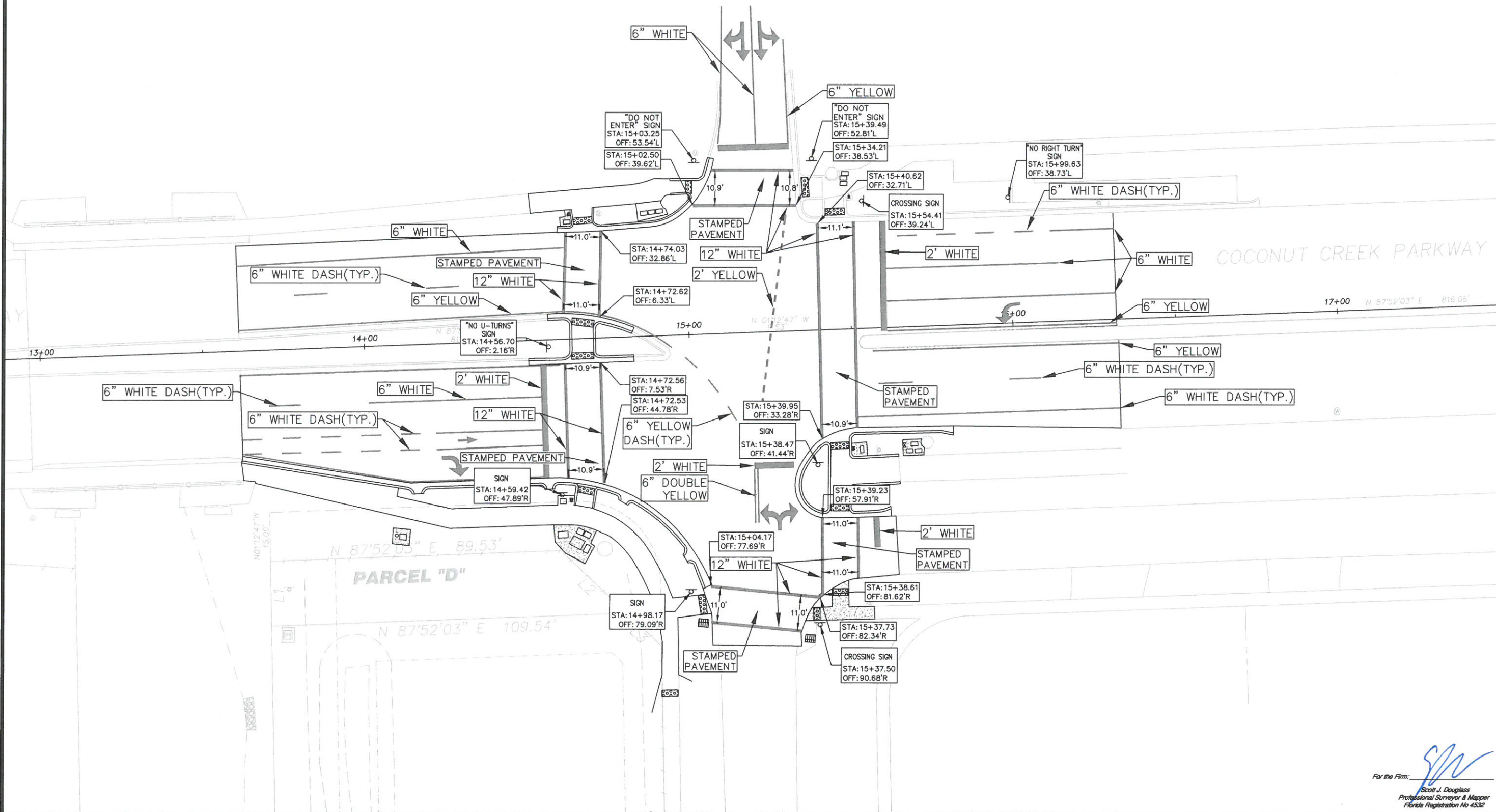
DRAWING DATA:
Drawing date: 01-08-2018
File source: NA
Drafted: FT
Checked: S.D.
CADD dwg: 1704619
SHEET: 1 of 1

REVISIONS:	Description:	Date:	Fb/Pg

PREPARED BY:
DOUGLASS, LEAVY & ASSOCIATES INC.
PROFESSIONAL SURVEYORS & MAPPERS
7914 WILES ROAD
CORAL SPRINGS, FLORIDA 33067
OFFICE: (954) 344-7984 FAX: (954) 344-2856
LICENSED BUSINESS No. 0727

BROWARD COUNTY INTERSECTION IMPROVEMENTS

COCONUT CREEK PARKWAY & N.W. 45TH AVE
PAVEMENT MARKING AS-BUILTS



DRAWING DATA:
 Drawing date: 01-08-2018
 File source: NA
 Draft: FT
 Checked: S.D.
 CAD: 1704649
 SHEET: 1 of 1

Revisions	Date	Fb/Pg

PREPARED BY: **DOUGLASS, LEAVY & ASSOCIATES INC.**
 PROFESSIONAL SURVEYORS & MAPPERS
 7914 WILES ROAD
 CORAL SPRINGS, FLORIDA 33067
 OFFICE: (954) 344-7994 FAX: (954) 344-2656
 LICENSED BUSINESS No. 8727

For the Firm: *[Signature]*
 Scott J. Douglass
 Professional Surveyor & Mapper
 Florida Registration No. 4532