

Legend

- Proposed Ditirectional Bore (2" HPDE SDR 11IPS)
- Traffic Rated Utility Box H15
- Water Main
- Sewer Gravity Main
- - - Sewer Force Main
- Storm Drain
- City Easement

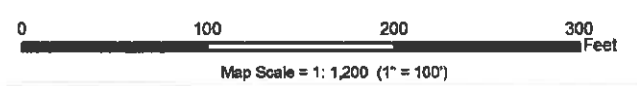


CITY OF COCONUT CREEK
INFORMATION TECHNOLOGY DEPARTMENT

4900 COPANS ROAD
 COCONUT CREEK, FL 33063
 (954) 973-6795

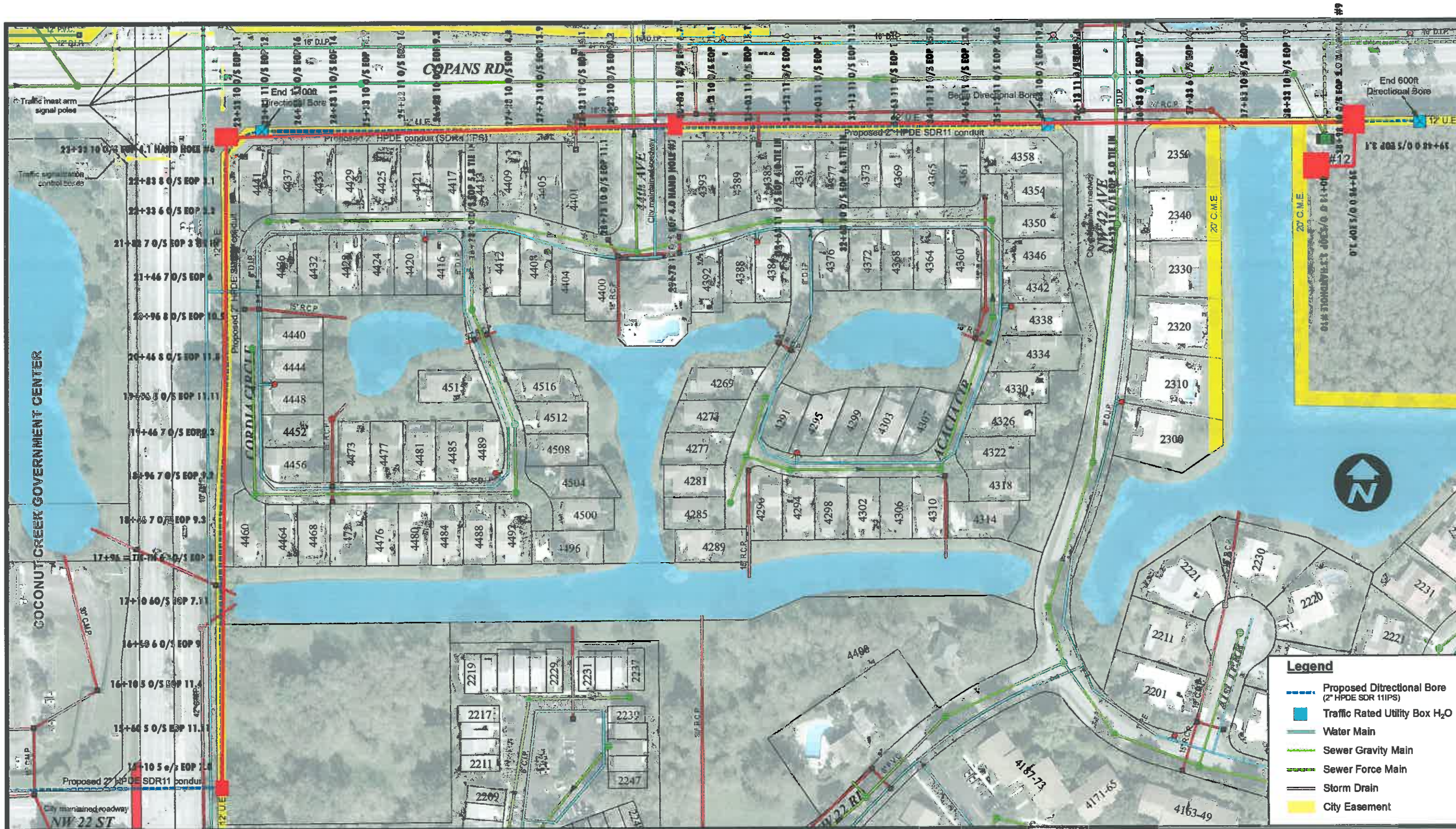
JUNE 2016

PROJECT LOCATION: 4200 COPANS ROAD



APPROVED BY: Y.K. LALL, PE PROJECT ENGINEER
 ENGINEERING DIVISION
 CITY OF COCONUT CREEK

SHEET NO: 2 of 7



Legend

- Proposed Directional Bore (2" HPDE SDR 11IPS)
- Traffic Rated Utility Box H₂O
- Water Main
- Sewer Gravity Main
- Sewer Force Main
- Storm Drain
- City Easement

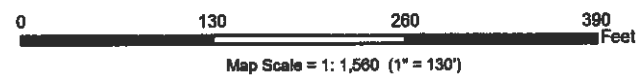


CITY OF COCONUT CREEK
INFORMATION TECHNOLOGY DEPARTMENT

4900 COPANS ROAD
 COCONUT CREEK, FL 33063
 (954) 973-6795

JUNE 2016

PROJECT LOCATION: 4200 COPANS ROAD



APPROVED BY: Y.K. LALL, PE PROJECT ENGINEER
 ENGINEERING DIVISION
 CITY OF COCONUT CREEK

SHEET NO: 2 of 6