

City of Coconut Creek  
Development Services Department  
Plans & Permits  
Imaging Indexing Cover Page

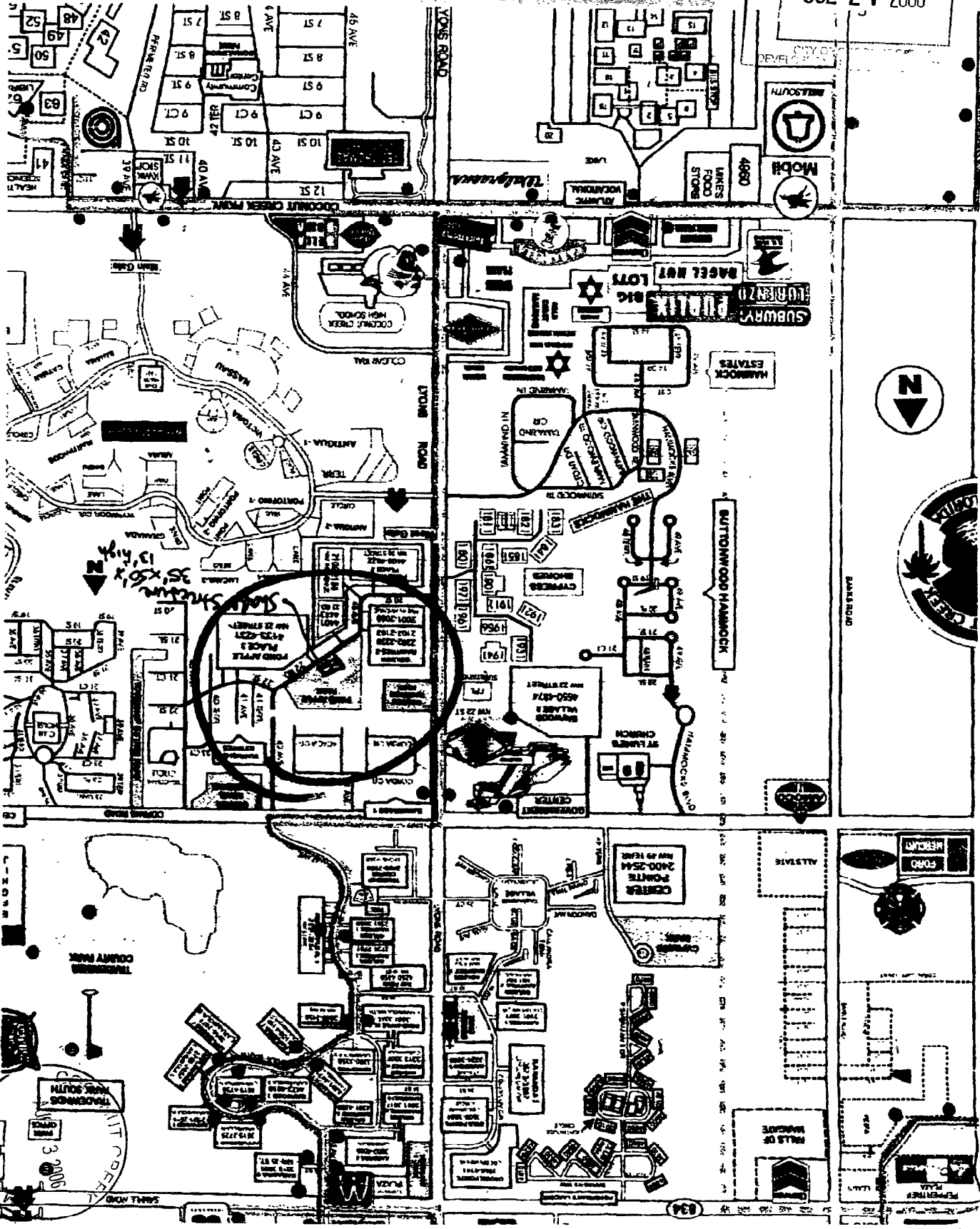
Thu Sep 11 2008

08:29:58

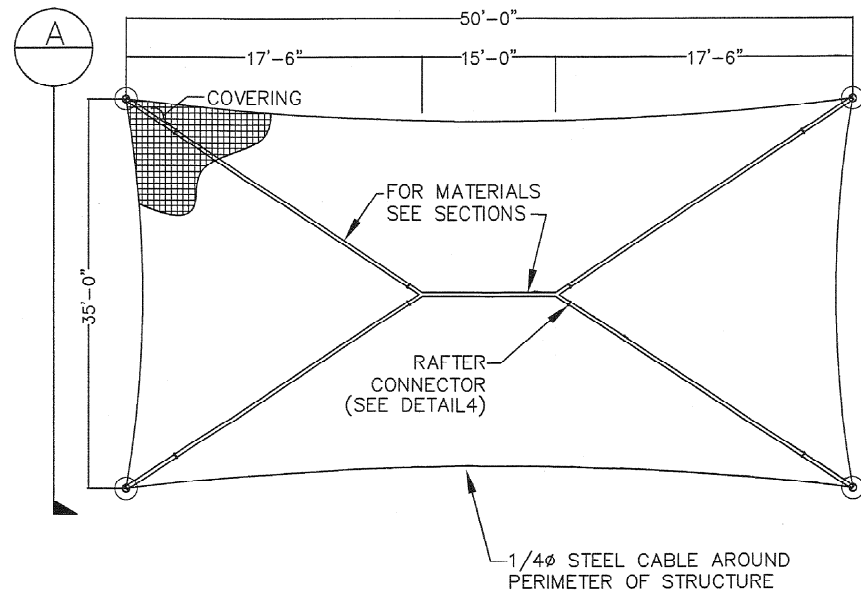
Parcel ID/Folio	484205223420
Permit Number	06004279
Permit Address	4300 NW 22 ST
Subdivision	TARTAN OF COCONUT CREEK
Lot	POND
Block	APPLE PK
Permit Type	CANOPY
Contractor	FABMASTER INDUSTRIAL PRODUCTS
Plans No.	06004279

RECEIVED

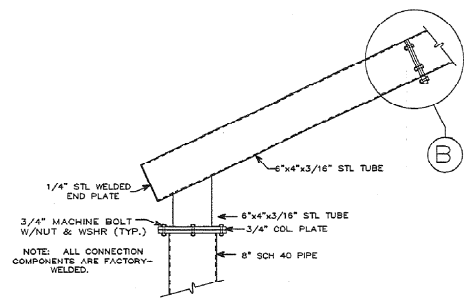
JUL 27 2006



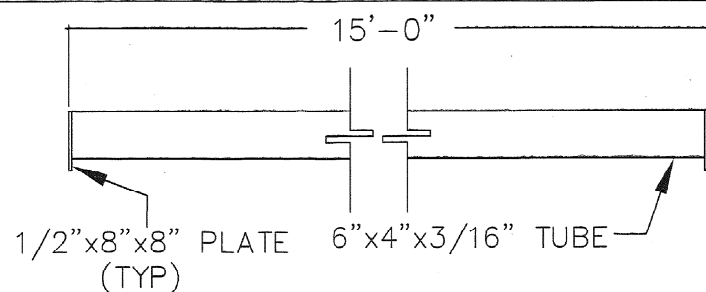
RECEIVED  
JUL 27 2006



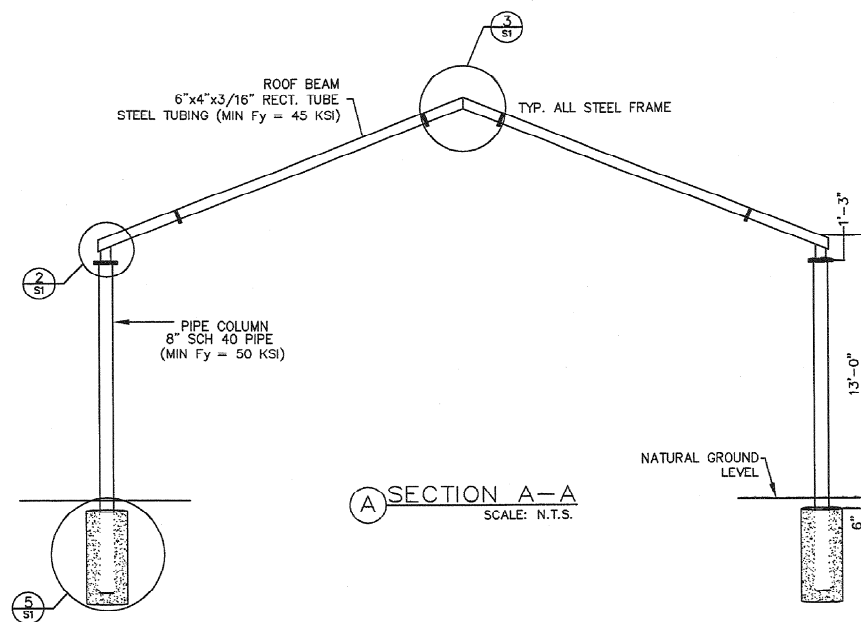
1 PLAN VIEW  
SCALE: N.T.S.



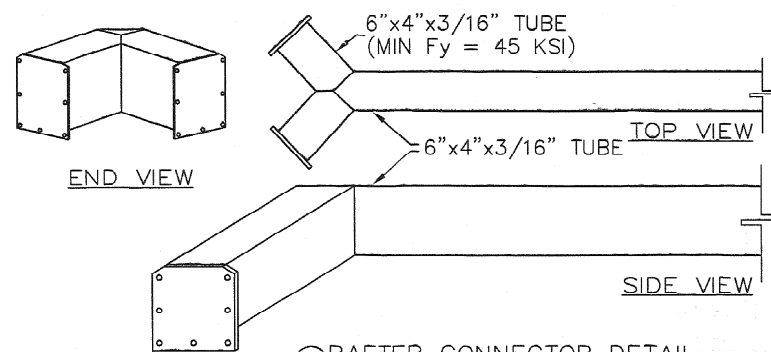
2 TYP. BEAM-TO-POST CONNECTION DETAIL  
N.T.S.



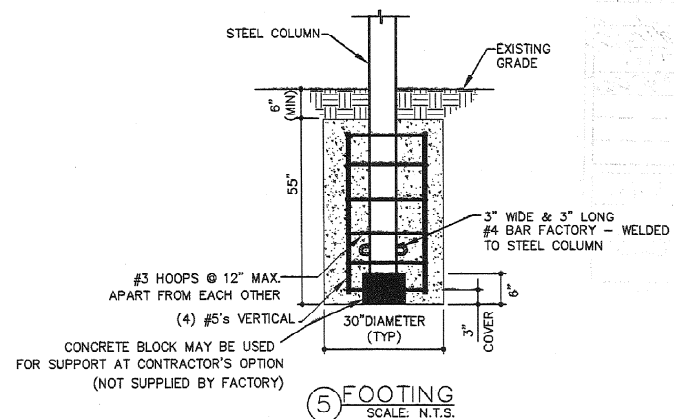
4 RAFTER BEAM DETAIL  
SCALE: N.T.S.



A SECTION A-A  
SCALE: N.T.S.



3 RAFTER CONNECTOR DETAIL  
SCALE: N.T.S.



5 FOOTING  
SCALE: N.T.S.

GENERAL NOTES:  
1-THE SHADIC STRUCTURE HAS BEEN DESIGNED IN ACCORDANCE WITH ASCE 7-02 TO THE FOLLOWING DESIGN CRITERIA:

STRUCTURE W/FABRIC CANOPY REMOVED	1
-CATEGORY	C
-EXPOSURE	0.77
-IMPORTANCE FACTOR	1.00 MPH
-BASIC WIND SPEED	41.0 PSF
-DESIGN WIND PRESSURE	66.0 PSF
-DESIGN UPLIFT PRESSURE	

2- THE FOUNDATION ASSUMES A MINIMUM SOIL BEARING CAPACITY OF 1700 PSF.  
3- ALL FASTENERS SHALL BE STAINLESS STEEL, ZINC-PLATED, OR HOT DIPPED GALVANIZED.  
4- THE FABRIC SYSTEM IS DESIGNED TO RELEASE WHEN WIND SPEED EXCEEDS 80 MPH, WHICH IS THE DESIGN LOAD ON THE STRUCTURE WITH FABRIC.

STEEL:  
1-STEEL PIPES SHALL HAVE A MINIMUM YIELD STRENGTH OF 50,000 PSI. STEEL PLATES SHALL CONFORM TO ASTM A501.

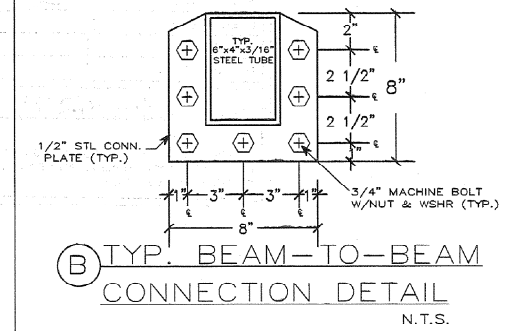
2-ALL TUBING MEMBERS SHALL BE FACTORY-WELDED TO AMERICAN WELDING SOCIETY (AWS) SPECIFICATIONS AND SHALL UTILIZE E70-S6 AND HAVE THE HIGHEST STANDARDS OF QUALITY WORKMANSHIP.  
3-ALL WELDS SHALL BE FILLET WELDS WITH MAXIMUM PERMISSIBLE THROAT THICKNESS OR FULL PENETRATION GROOVE WELDS.

CONCRETE:  
1-ALL CONCRETE SHALL BE MIXED AND PLACED IN ACCORDANCE WITH ACI 301-96.  
2-CONCRETE SHALL HAVE A MINIMUM 28 DAY COMPRESSIVE STRENGTH (f<sub>c</sub>) OF 2500 PSI. A PREBAGGED CONCRETE MIX HAVING A LISTED STRENGTH OF AT LEAST 2500 PSI THAT IS MIXED IN ACCORDANCE WITH THE MANUFACTURER'S RECOMMENDATIONS IS ACCEPTABLE FOR USE.

3-REINFORCING STEEL SHALL BE ASTM A-615 GRADE 60 WITH A MINIMUM YIELD STRENGTH (f<sub>y</sub>) OF 60 KSI.  
4-UNLESS OTHERWISE SHOWN, CONCRETE COVER SHALL BE 3" (MIN).

FABRIC:  
1-FABRIC HAS A SIEVE FACTOR OF 64%.

**NOTE TO OWNER:**  
OWNER ACCEPTS FULL RESPONSIBILITY FOR REMOVING THE FABRIC SHADE MATERIAL FROM THE STEEL FRAME WHEN SEVERE WEATHER CONDITIONS ARE PREDICTED. SUCH CONDITIONS INCLUDE PREDICTED WIND SPEEDS IN EXCESS OF 80 MPH. ALSO, AS STRUCTURE IS NOT DESIGNED FOR ANY SNOW LOAD, IT IS RECOMMENDED THAT CANOPY BE REMOVED WHEN SNOWFALL IS EXPECTED.



B TYP. BEAM-TO-BEAM CONNECTION DETAIL  
N.T.S.

Manufactured by:  
**Shade systems**  
INC.  
4350 N.W. 19 Avenue, Unit G  
Pompano Beach, FL 33064  
Tel.: 1-800-609-6066

AXIOM ENGINEERING, Inc.  
FLORIDA LIC. CA 8421  
10211 W. Sample Road  
Suite 106  
Coral Springs, FL 33065  
Phone: (954) 757-8666  
Fax: (954) 757-7004

POND APPLE PARK  
4300 N.W. 22 STREET  
COCONUT CREEK, FL 33063

Approved: *Edwin M. Faerman*  
JUL 03 2006  
Edwin M. Faerman, P.E.  
State of Florida License No. 46590

Revisions:


REP: N/A  
Scale: N.T.S.

Job No: 1530  
Sheet No:  
Drawn: TT  
Checked: AB/EMF  
Approved: AB/EMF  
Date: 6/11/06

