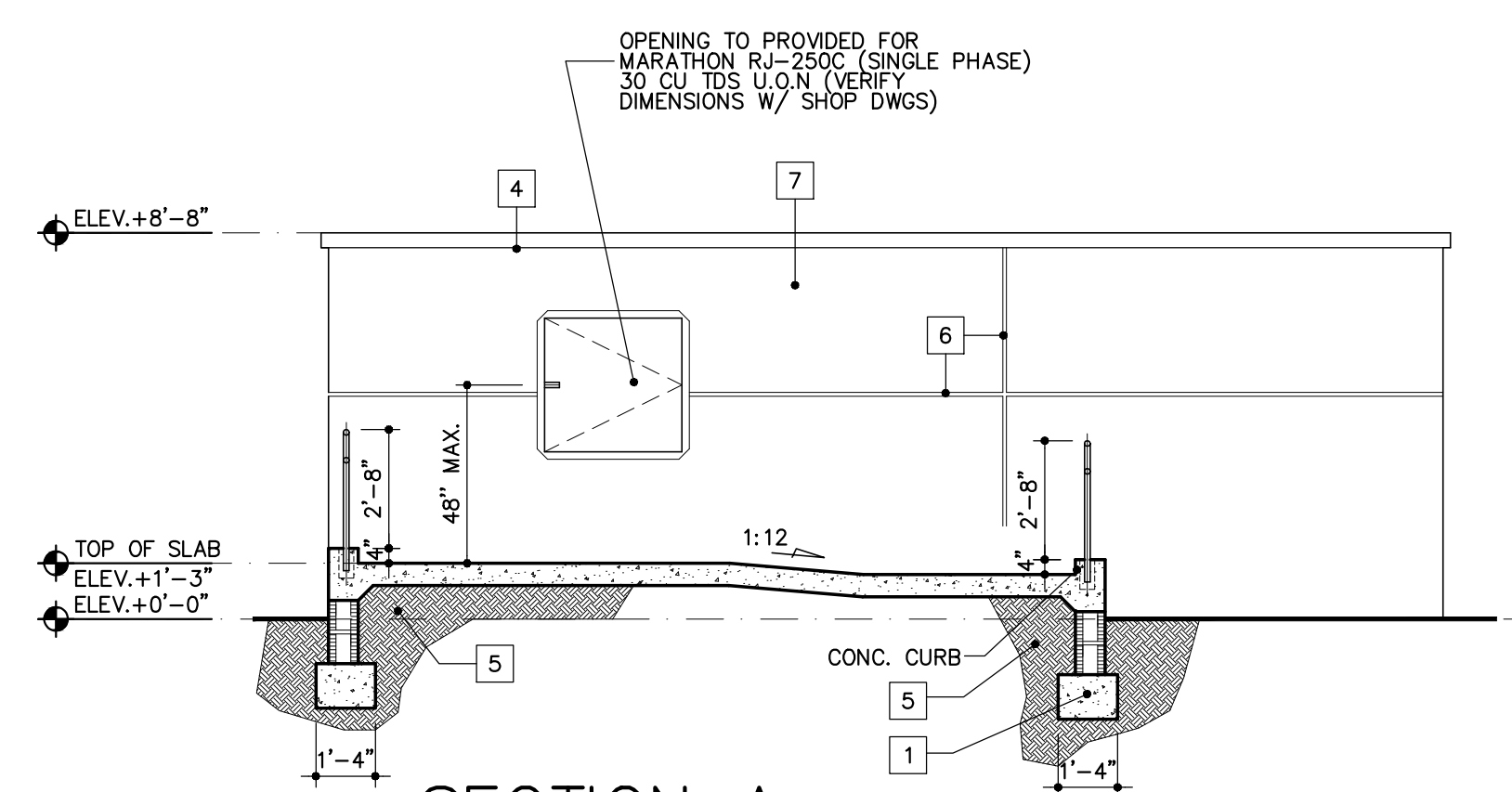
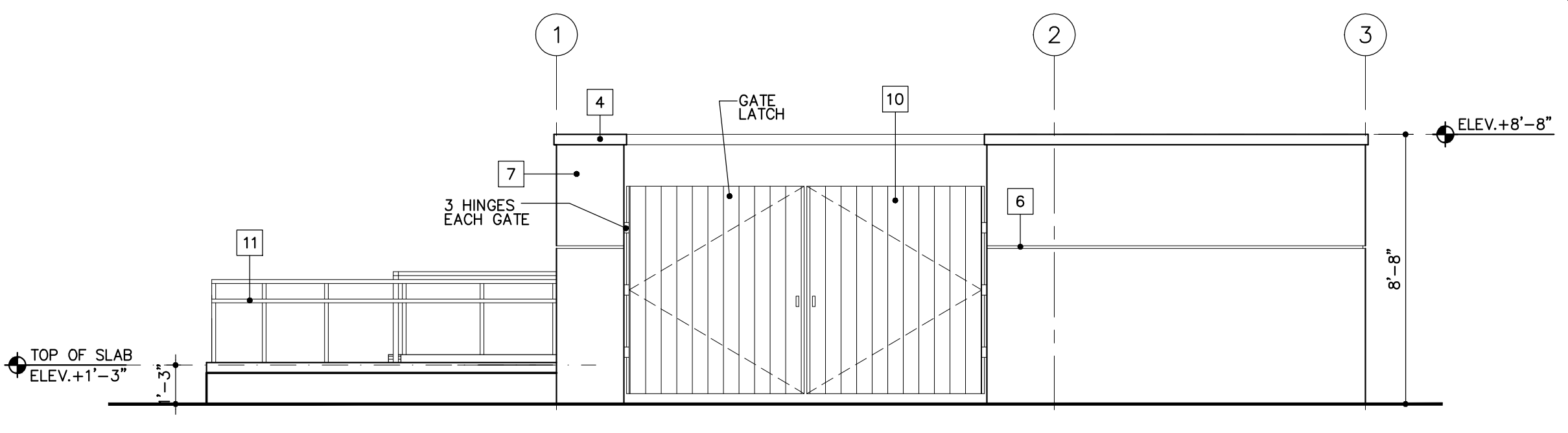


1 FLOOR PLAN
SCALE: 1/4"=1'-0"

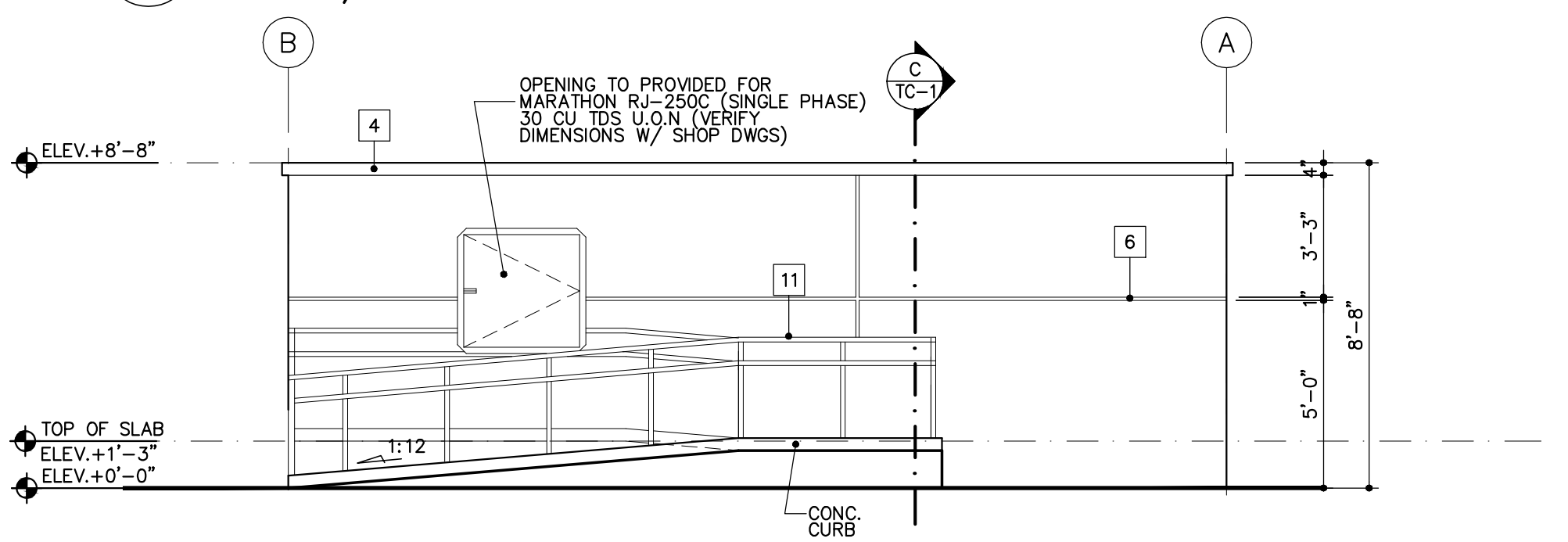
NOTE: CONTRACTOR TO PROVIDE ELECT. STUB OUTS FOR COMPACTOR CONTROLS ASSEMBLY



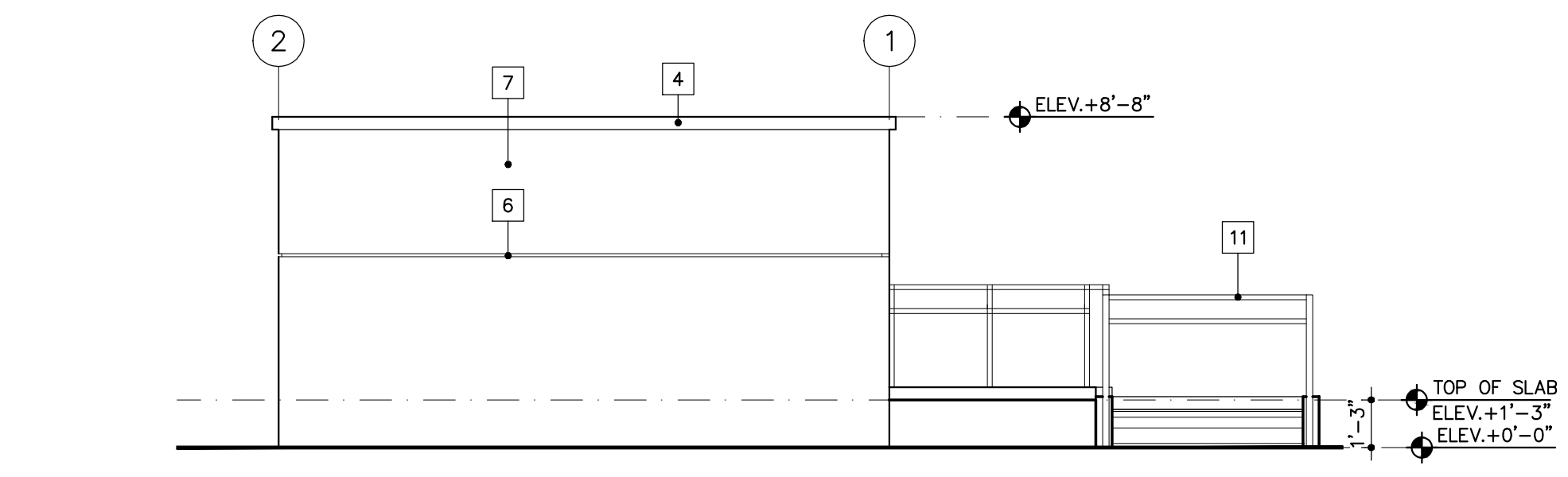
6 SECTION A
SCALE: 1/4"=1'-0"



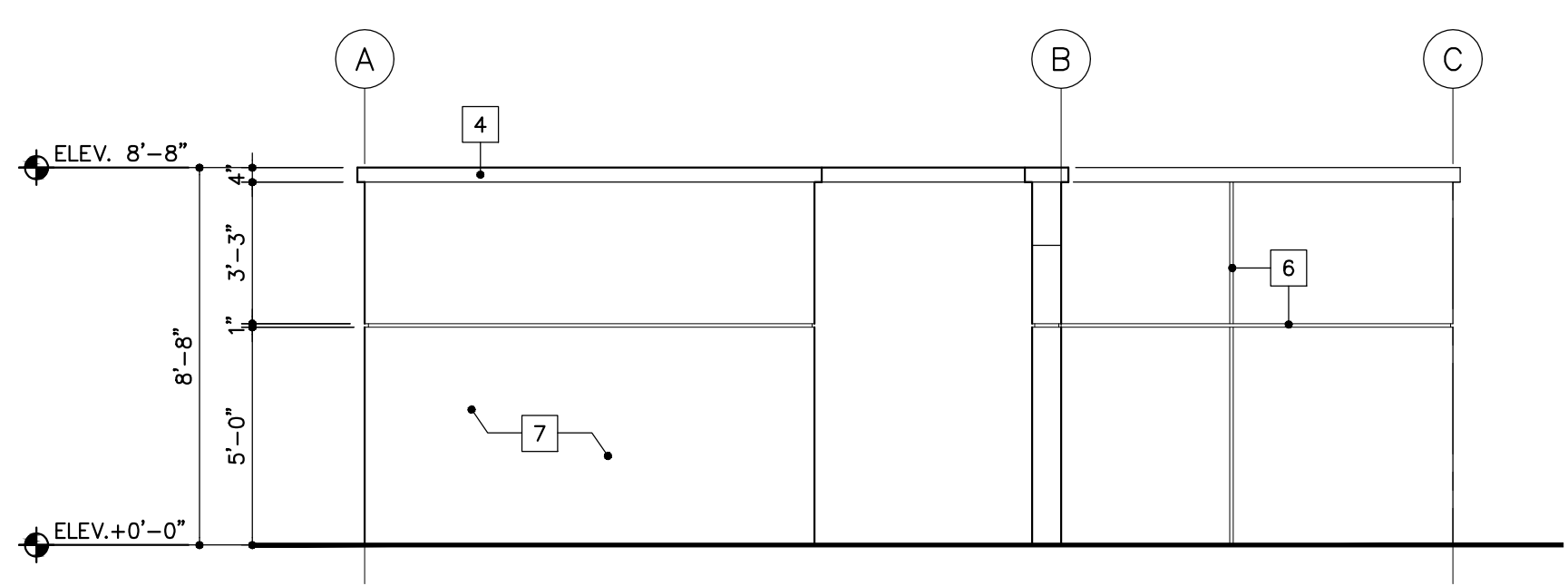
2 FRONT WEST ELEVATION
SCALE: 1/4"=1'-0"



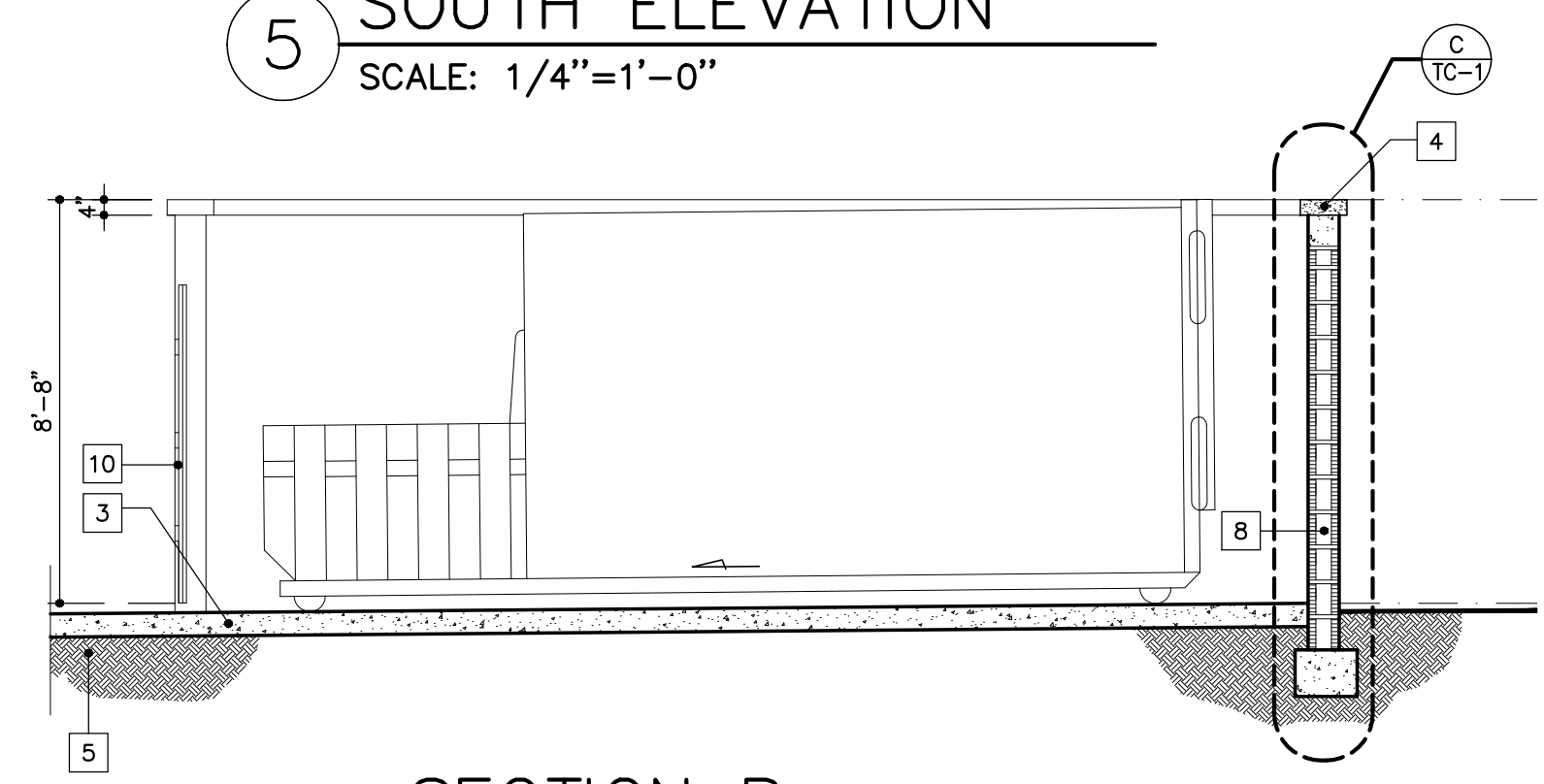
3 NORTH ELEVATION
SCALE: 1/4"=1'-0"



4 REAR EAST ELEVATION
SCALE: 1/4"=1'-0"



5 SOUTH ELEVATION
SCALE: 1/4"=1'-0"



7 SECTION B
SCALE: 1/4"=1'-0"

CONSTRUCTION TYPE	
FBC 2010	TYPE V-A NON-SPRINKLERED (TABLE 503 FBC)
OCCUPANCY CLASSIFICATION	
FBC 2010	GROUP U- UTILITY & MISCELLANEOUS (SECTION 312)

TRASH COMPACTOR LEGEND

- 1 12" DEEP MIN. CONCRETE BASE (REFER TO STRUCTURAL DWG'S).
- 2 8"x8" CONCRETE SILL (REFER TO STRUCTURAL DWG'S).
- 3 6" CONCRETE SLAB (REFER TO STRUCTURAL DWG'S).
- 4 PRECAST CONCRETE CAP
- 5 COMPACTED FILL - SEE GENERAL NOTES.
- 6 1" STUCCO SCORE LINE
- 7 5/8" LIGHT TEXTURE STUCCO FINISH.
- 8 8" CONCRETE BLOCK WALL.
- 9 CHAIN LINK FENCE
- 10 OPAQUE METAL GATE (REFER TO SHOP DWGS)
- 11 METAL 36" HIGH HANDRAIL
- 12 6" STEEL POST

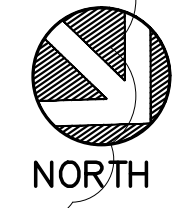
REVISIONS	BY
1 PERMIT COMMENTS 10/01/2012	G.D.
2 PERMIT COMMENTS 12/18/2012	G.D.
3 PERMIT COMMENTS 02/18/13	C.C.
4 COORDINATION 03/25/13	C.C.
5 COORDINATION 04/29/13	C.C.
6 COORDINATION 04/29/13	C.C.

CASA PALMA
FOR:
ZF DEVELOPMENT, LLC.
LOCATED AT:
COCONUT CREEK, FLORIDA

MSA ARCHITECTS, INC.
MIAMI OFFICE
7685 SW 104th ST.
MIAMI, FLORIDA 33156
(305) 273-9911

MSA ARCHITECTS
ARCHITECTURE & PLANNING

DRAWN: RAN
CHECKED: -
DATE: AUGUST 12, 2012
SCALE: AS SHOWN
JOB NO.: 1495.PRJ
SHEET: 1495-TC-1.DWG



TRASH COMPACTOR PLAN
PERMIT DRAWINGS