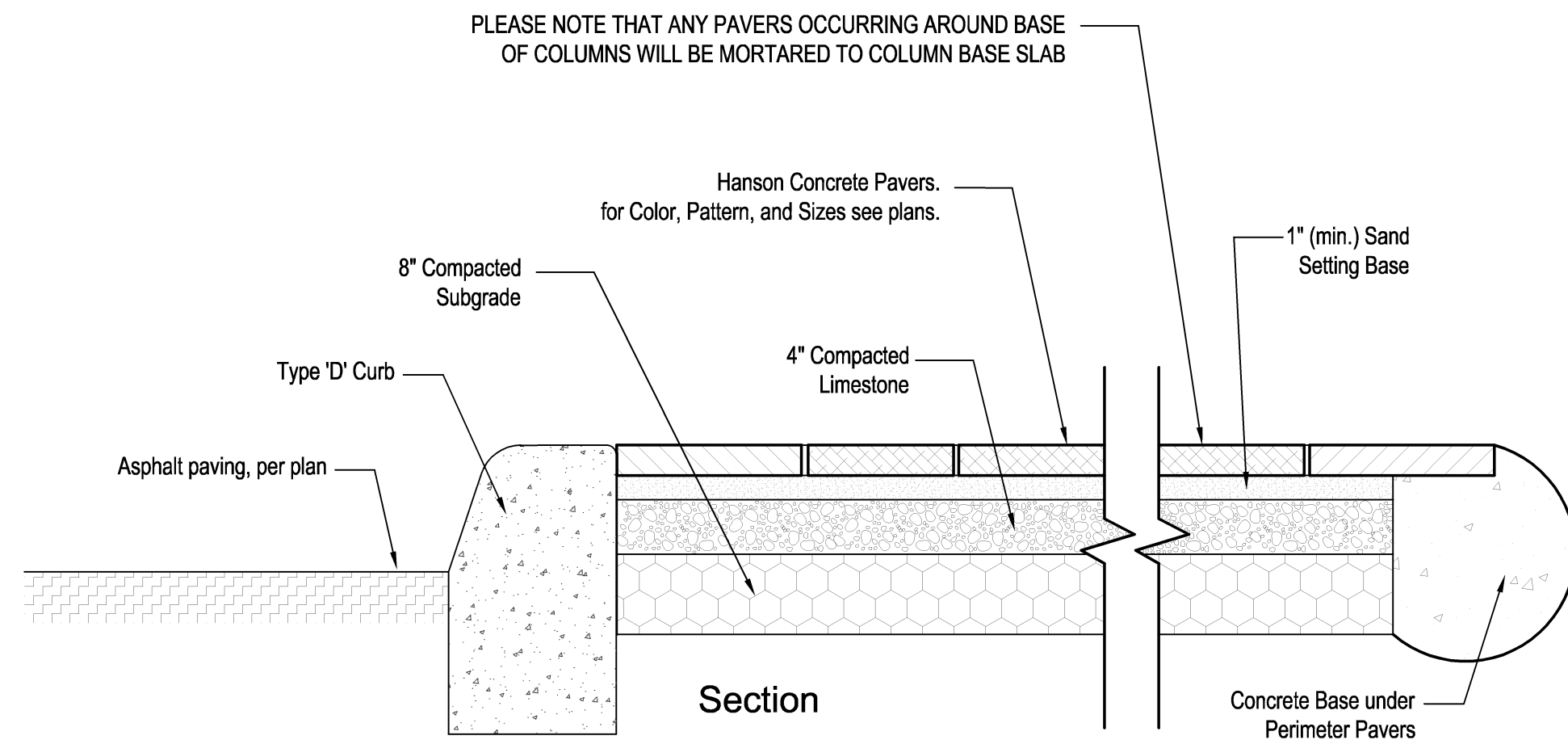
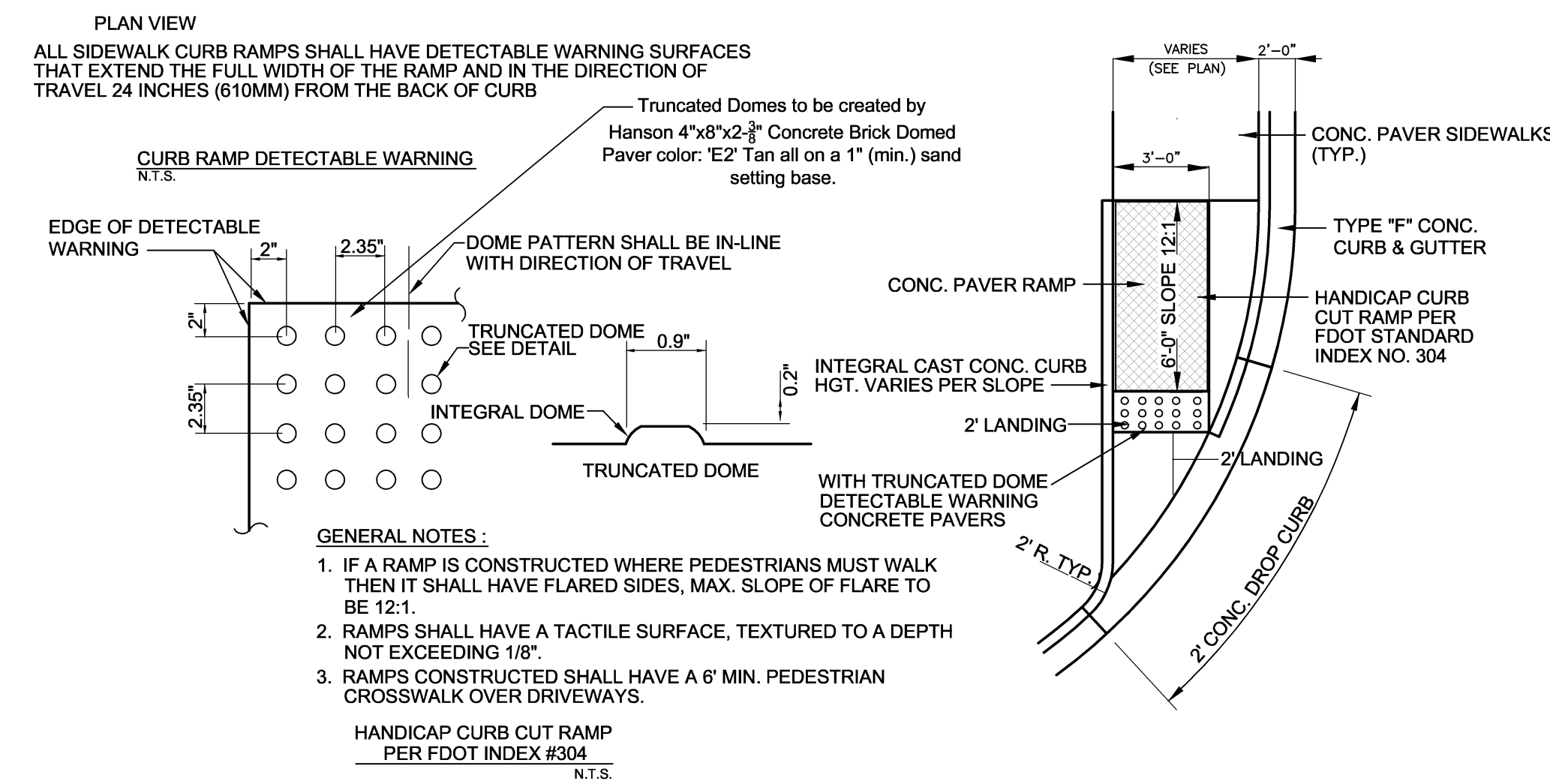


REVISIONS	BY
12-17-12-PERMIT SM	ES/HJ



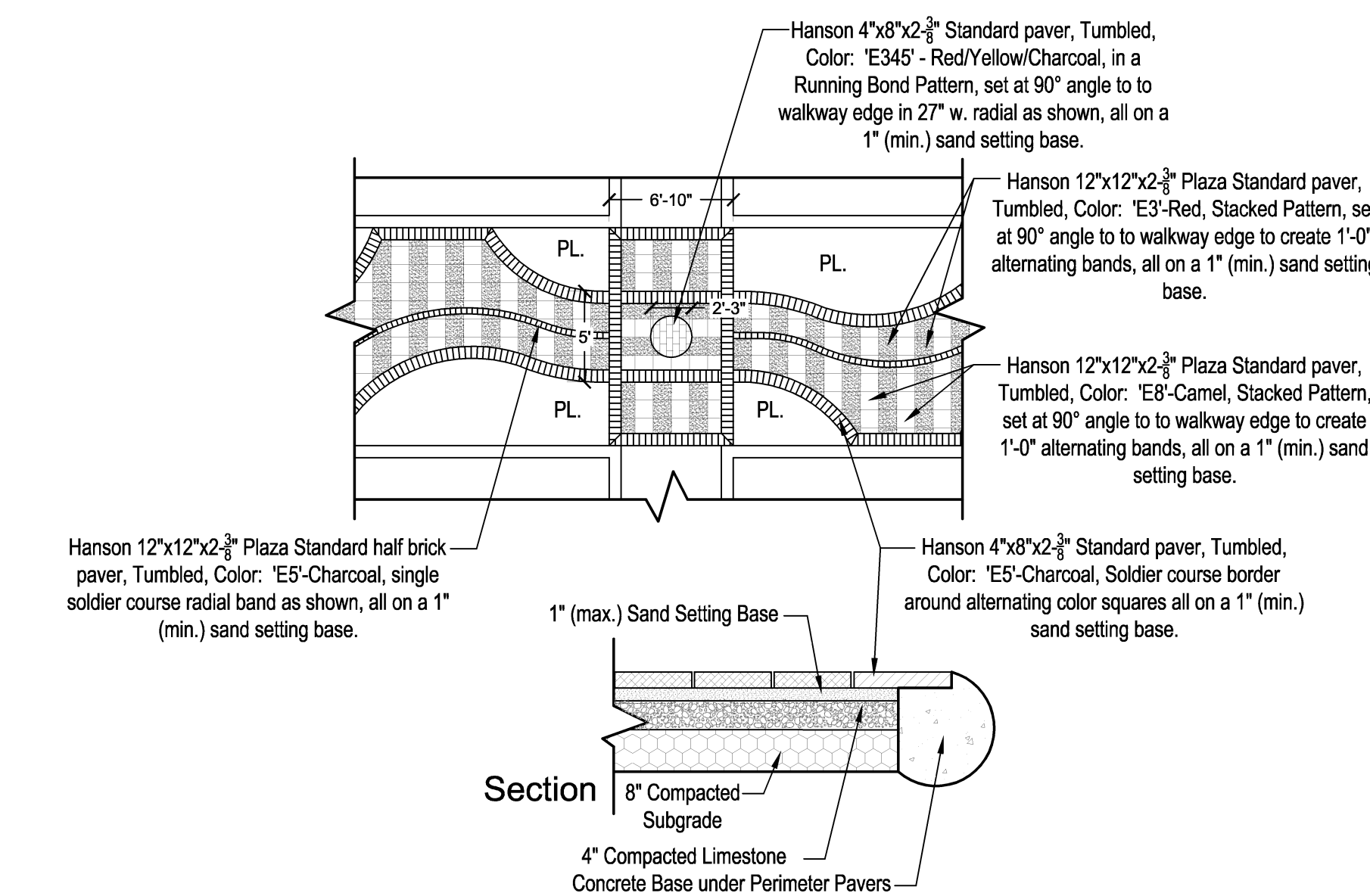
**01 TYP. PAVERS ON SAND ADJACENT TO CURBING & MUDDED PERIMETER**

N.T.S.



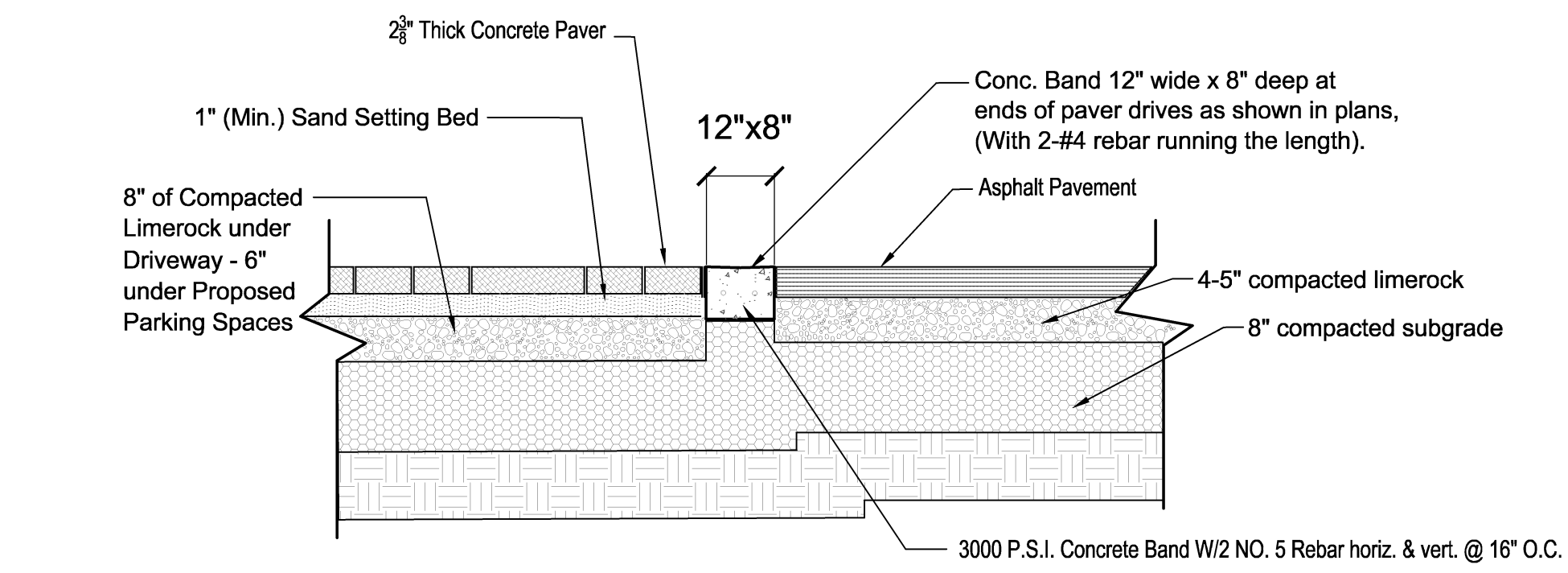
**04 SIDEWALK RAMP DETAIL**

N.T.S.



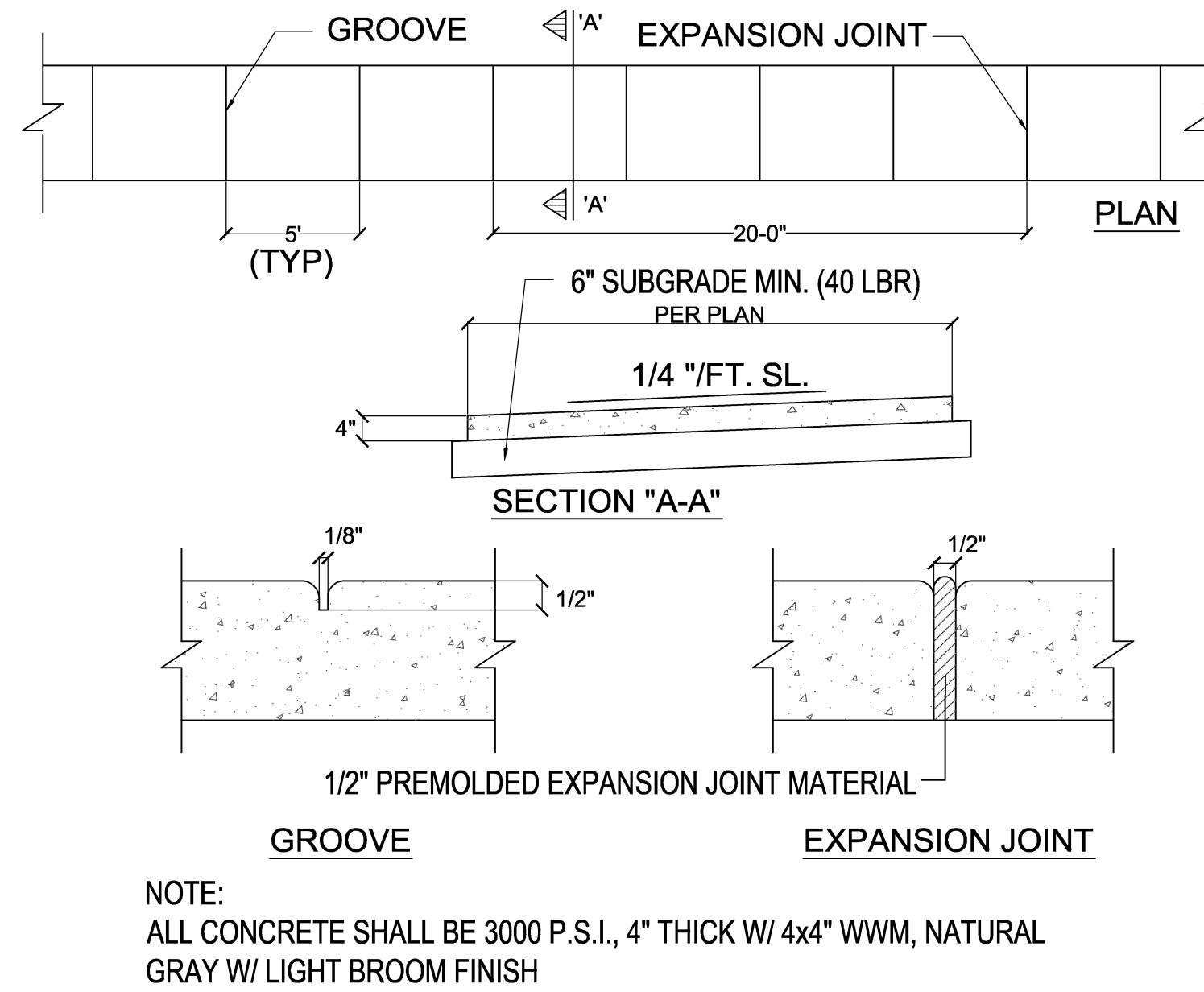
**07 APARTMENT COURTYARD TYPICAL PAVER DETAIL**

N.T.S.



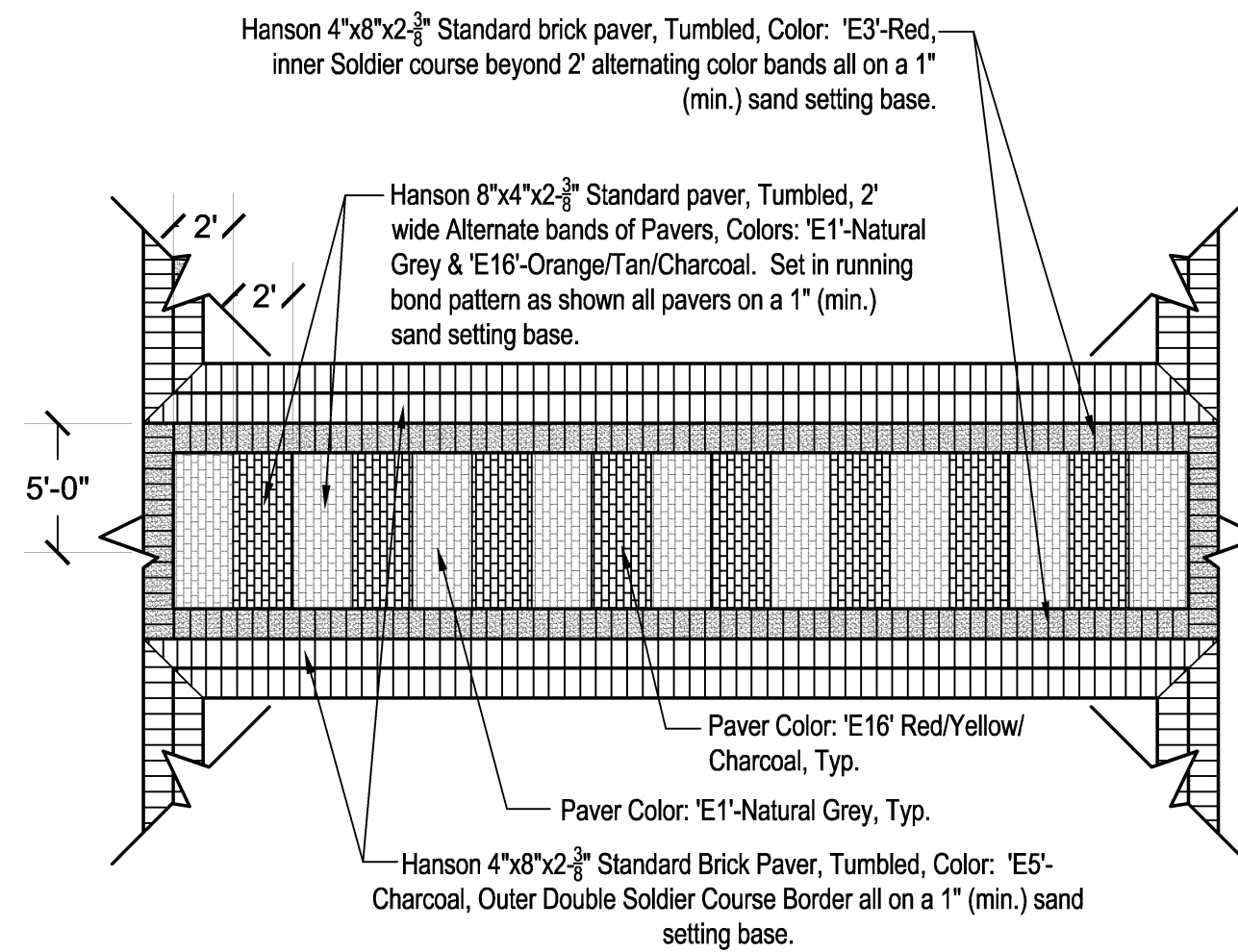
**02 VEHICULAR PAVING W / CONCRETE BANDING**

N.T.S.



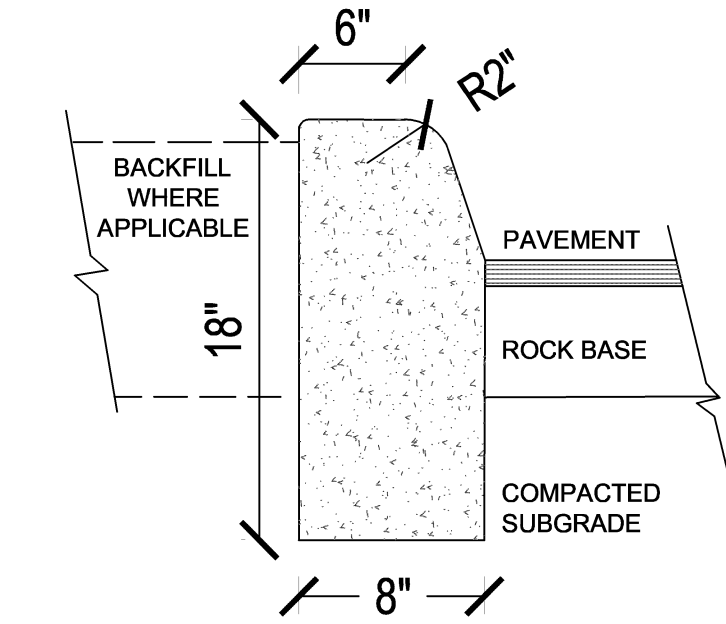
**05 CONCRETE SIDEWALK DETAIL**

N.T.S.



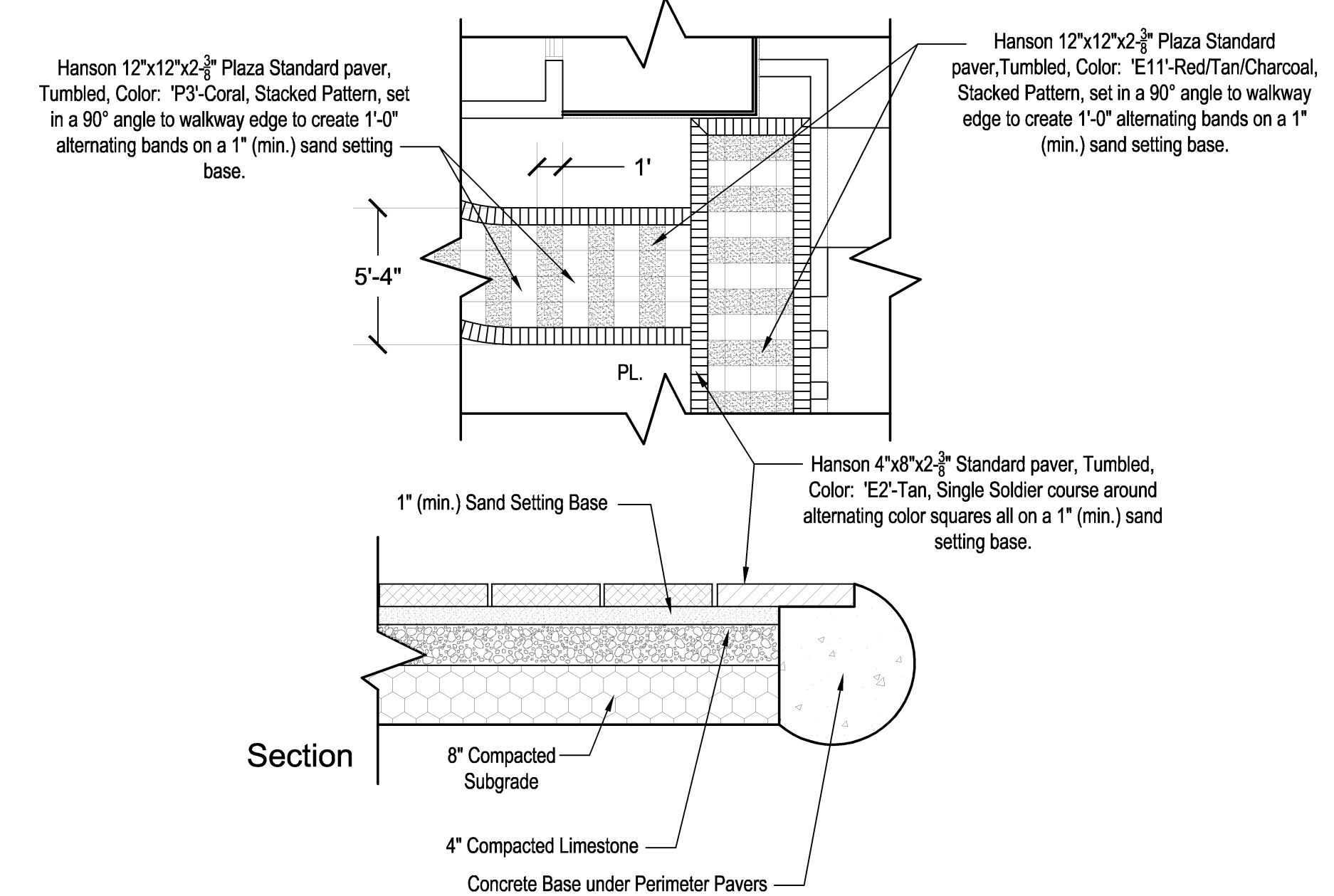
**08 PAVER CROSSWALK WITH DRIVEWAY DETAIL**

N.T.S.



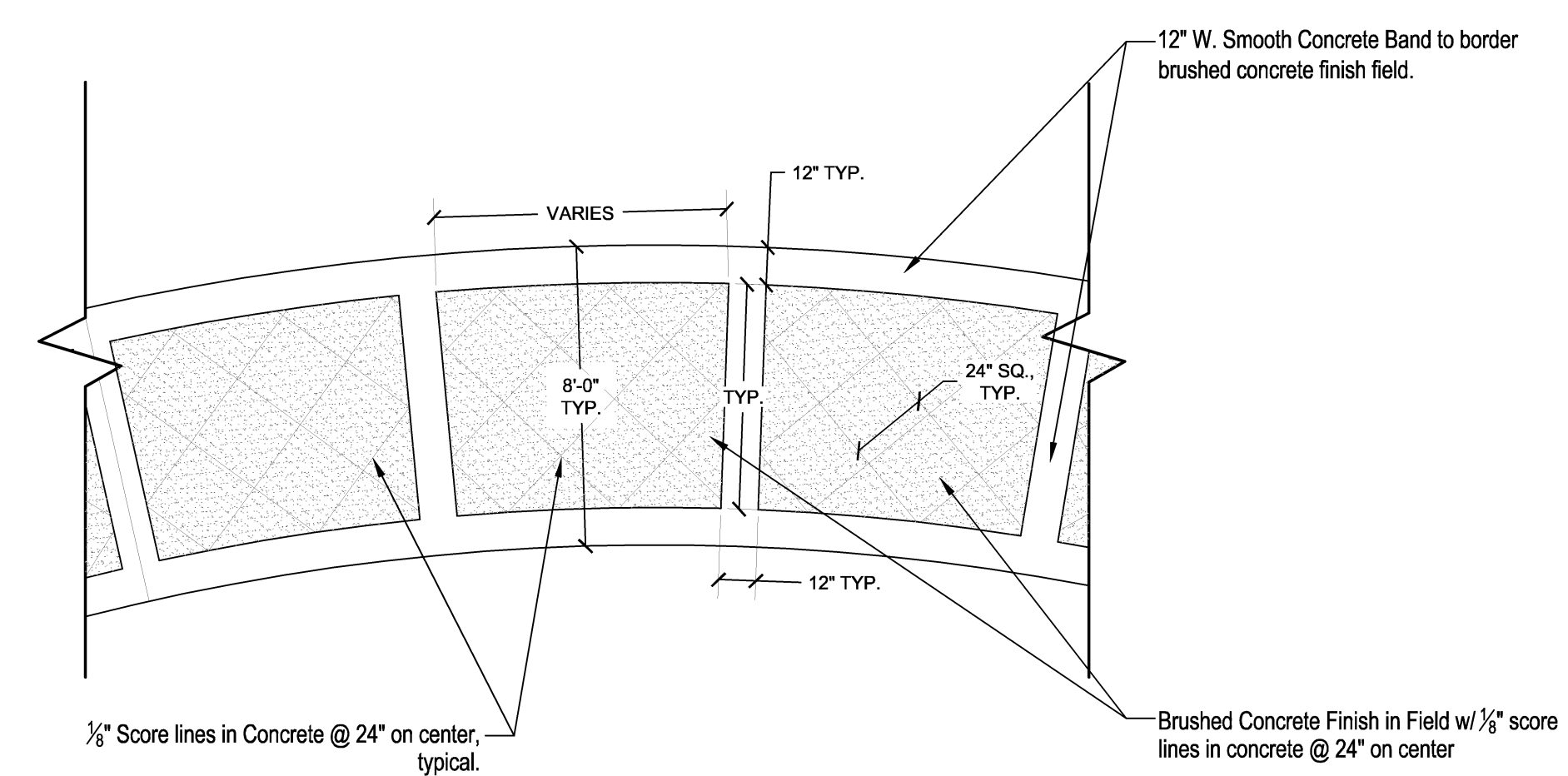
**03 TYPE 'D' CURB DETAIL**

N.T.S.



**06 APARTMENT COURTYARD TYPICAL PAVER DETAIL**

N.T.S.



**09 US 441 CONCRETE PATH DETAIL**

N.T.S.

REQUIRED SEPARATE PERMITS

ARCHITECTURE  
N.T.S.  
LAND PLANNING  
INTERIOR DESIGN  
GOVERNMENTAL PROCESSING

**ARCHITECTURAL ALLIANCE**

612 S.W. FOURTH AVENUE, FORT LAUDERDALE, FLORIDA 33315 AA 002084 LC 000257  
TEL: (954) 764-8858 FAX: (954) 764-0731 E-MAIL: landscape@archall.com

**CASA PALMA**  
FOR:  
ZF DEVELOPMENT, LLC.  
LOCATED AT:  
COCONUT CREEK, FLORIDA

MSA ARCHITECTS, INC.  
MIAMI OFFICE  
1101 S.W. 104th ST.  
SUITE 300  
MIAMI, FLORIDA 33156  
(305) 273-9911

**MSA ARCHITECTS**  
ARCHITECTURE & PLANNING

ARCHITECTURE  
N.T.S.  
LAND PLANNING  
INTERIOR DESIGN  
GOVERNMENTAL PROCESSING

DRAWN	ES
CHECKED	HJ
DATE	12/22/11
SCALE	AS SHOWN
JOB NO.	1495.PRJ
SHEET	10

**LC-10**

HARDSCAPE  
DETAILS  
SHEET