

1

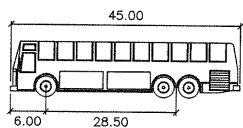
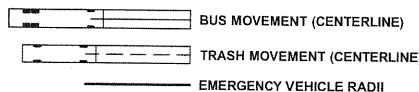
2

3

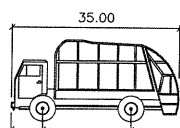
4

5

LEGEND



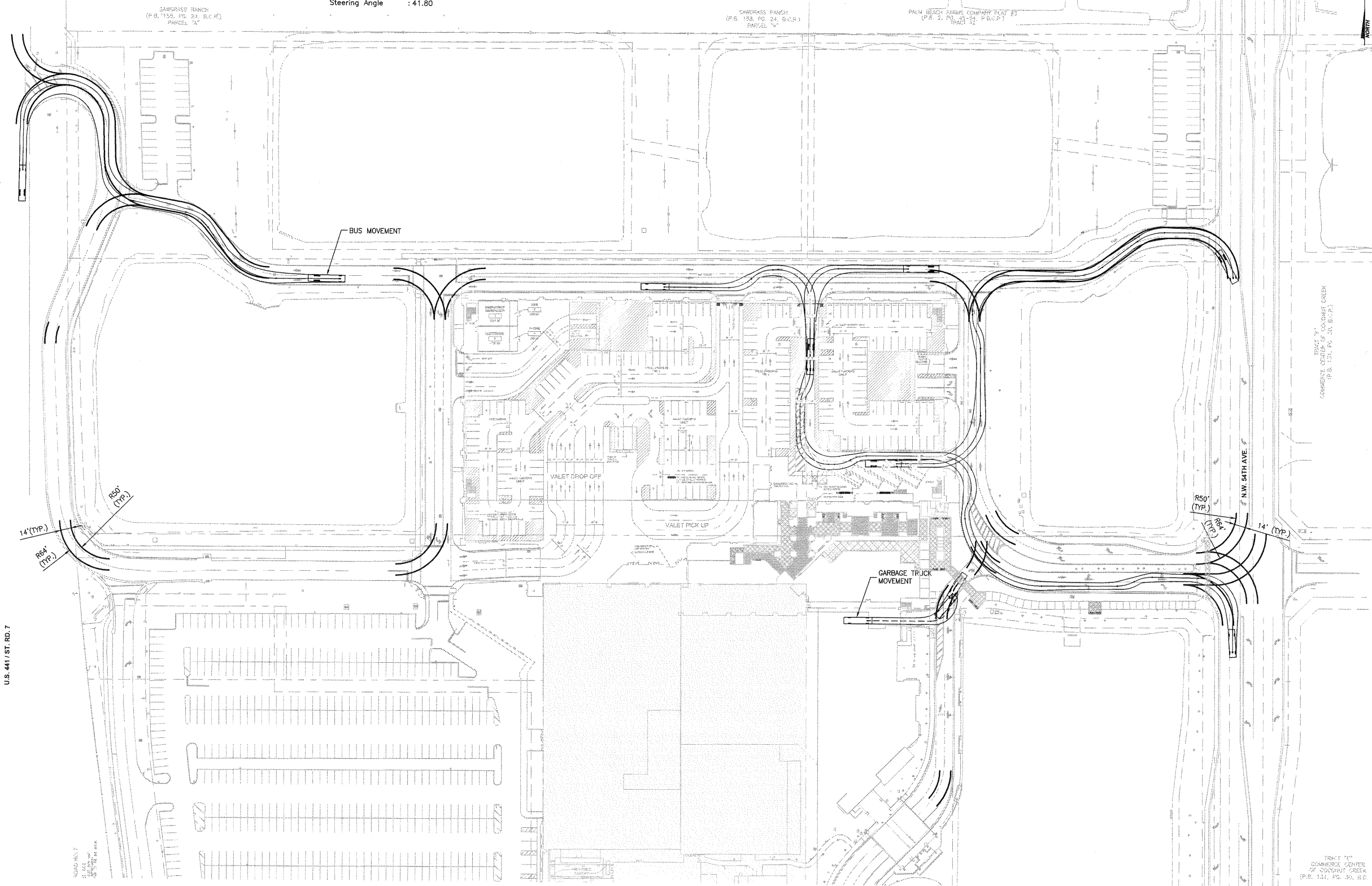
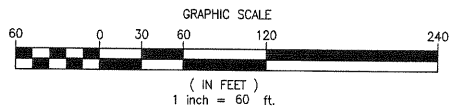
BUS-45 feet
Width : 8.50
Track : 8.50
Lock to Lock Time : 6.00
Steering Angle : 44.30



GARBAGE TRUCK feet
Width : 8.20
Track : 8.00
Lock to Lock Time : 6.00
Steering Angle : 41.80

NOTE:

ALL AREAS SHOWN TO HAVE EMERGENCY ACCESS. ALSO ALLOW FOR GARBAGE TRUCK AND BUS ACCESS SINCE THE BUS AND GARBAGE TRUCK CAN MAKE SHARPER TURNS THAN THE REQUIREMENTS FOR EMERGENCY ACCESS (50' INSIDE RADIUS, 64' OUTSIDE RADIUS AND 14' WIDTH). STEERING ANGLES FOR BUS AND GARBAGE TRUCK ARE LESS THAN 50.



U.S. 441 / ST. RD. 7

COMMERCE CENTER OF COCONUT CREEK
(P.B. 133, PG. 30, B.C.P.)

TRACT 11
COMMERCE CENTER
OF COCONUT CREEK
(P.B. 133, PG. 30, B.C.P.)

PHASE I TRANSPORTATION CENTER

SEMINOLE COCONUT CREEK CASINO
SEMINOLE TRIBE OF FLORIDA
5600 NW 40TH STREET
COCONUT CREEK, FLORIDA 33073

DRAWN BY
KEITH AND SCHNARS, P.A. FTL
CHECKED BY
T.J.H.
ISSUE DATE
OCTOBER 18, 2010
JOB NUMBER
17796.42
SHEET NAME
VEHICULAR
MOVEMENT PLAN

C-25

State of Florida
Professional Engineer
License No. 50588

TIM J. HALL, P.E.

NOV 29 2010

Professional Engineer
Michael Singer Inc.
South Bay, Coconino County, AZ
928-527-0344
michael@singer.com

EDSA

FRIDMUTTER GROUP

KEITH and SCHNARS, P.A.
ENGINEERS, PLANNERS, SURVEYORS
800 N. AVENUE 100, SUITE 100
COCONUT CREEK, FLORIDA 33073
TEL: 904-330-1339
FAX: 904-330-1340