

NOTES

- ALL CONSTRUCTION SHALL BE IN ACCORDANCE WITH CITY OF COCONUT CREEK STANDARDS.
- ALL UTILITIES WITH THE EXCEPTION OF MAJOR FPL LINES WILL BE PLACED UNDERGROUND IN ACCORDANCE WITH PHASING SCHEDULE AGREEMENT.

- ALL CONSTRUCTION, MATERIALS, TESTING AND MAINTENANCE SHALL CONFORM TO THE STANDARDS AND SPECIFICATIONS OF LOCAL, COUNTY, STATE AND NATIONAL CODES WHERE APPLICABLE.
- WHEN ANY OF THE GOVERNING REGULATORY AGENCIES' STANDARDS AND SPECIFICATIONS ARE IN CONFLICT, THE MORE STRINGENT SHALL APPLY.
- ALL SIDEWALKS SHALL COMPLY WITH ADA.

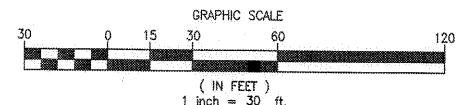
- ALL WATER LINES, SEWER LINES AND THEIR APPURTENANCES SHALL BE SEPARATED BY A MINIMUM OF 4 FEET FROM ALL OTHER UTILITIES.
- WATER MAINS SHALL BE LAID TO PROVIDE A VERTICAL SEPARATION OF AT LEAST 18" BETWEEN THE BOTTOM OF THE WATER MAIN AND THE TOP OF THE SANITARY SEWER AND STORM DRAINAGE. WATER MAINS SHALL BE INSTALLED ABOVE SEWERS.
- STORM DRAINAGE SHALL BE LAID TO PROVIDE A VERTICAL SEPARATION OF AT LEAST 6".

LEGEND

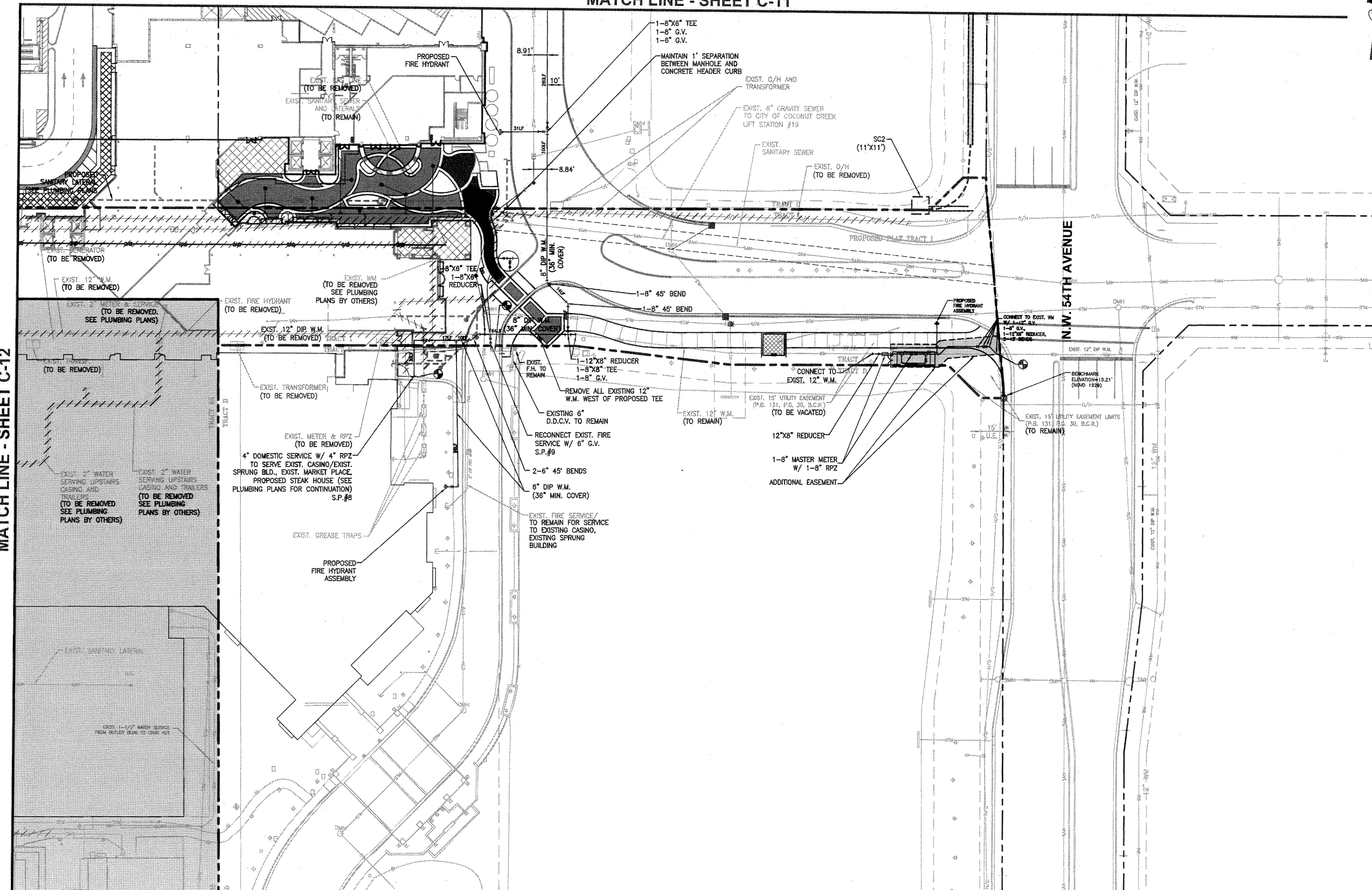
INDICATES TRACT 65 LIMITS (NOT PART OF SITE PLAN SUBMITTAL)

NOTE:

PROPOSED SANITARY LATERALS SHOWN FOR INFORMATIONAL PURPOSES ONLY (REFER TO PLUMBING PLANS BY OTHERS)



MATCH LINE - SHEET C-11



MATCH LINE - SHEET C-15

Date	Description
4/13/11	Issued for Administrative Approval
5/23/11	Issued for Administrative Approval
8/13/11	Issued for Administrative Approval
9/8/11	Issued for Administrative Approval
9/27/11	Issued for Final Administrative Approval
10/13/11	ORC COMMENTS

FAIRMONT GROUP
ENGINEERS, PLANNERS, SURVEYORS
2010 S. W. 10TH AVE., SUITE 100
FORT LAUDERDALE, FL 33304
TEL: 954.575.1111
WWW.FAIRMONTGROUP.COM

KEITH AND SCHNARS, P.A.
ENGINEERS, PLANNERS, SURVEYORS
1000 N. W. 10TH AVE., SUITE 100
FORT LAUDERDALE, FL 33304
TEL: 954.575.1111
WWW.KEITHANDSCHNARS.COM

State of Florida
Professional Engineer
License No. 50588
10-13-11
TIM J. HALL, P.E.

PHASE I TRANSPORTATION CENTER
SEMINOLE COCONUT CREEK CASINO
SEMINOLE TRIBE OF FLORIDA
5600 NW 40TH STREET
COCONUT CREEK, FLORIDA 33073

DESIGNED BY
KEITH AND SCHNARS, PA
CHECKED BY
T.J.H.
ISSUE DATE
APRIL 13, 2011
JOB NUMBER
17796.42
SHEET NAME
PRELIMINARY WATER & SEWER PLAN
SHEET NUMBER
C-13