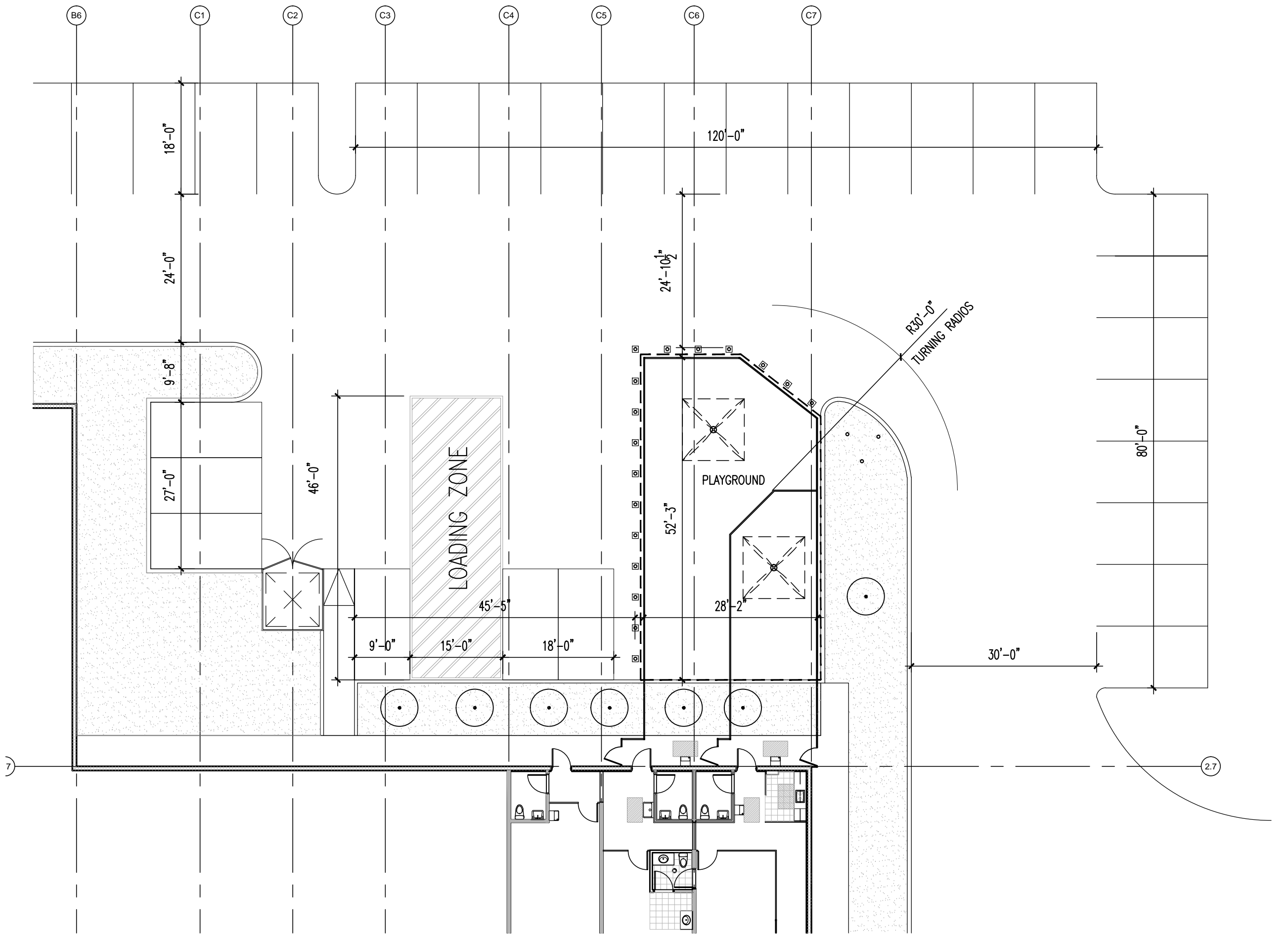
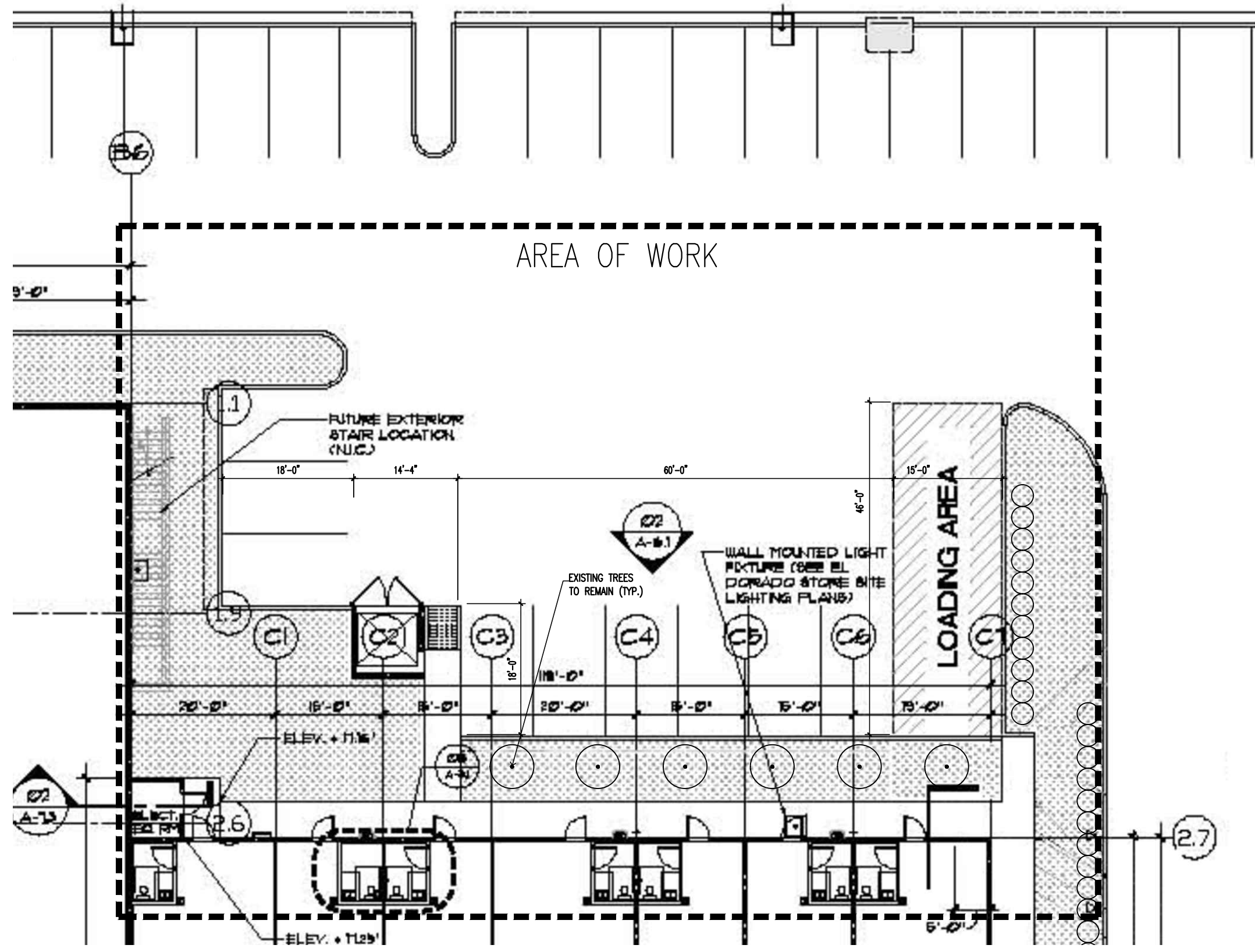


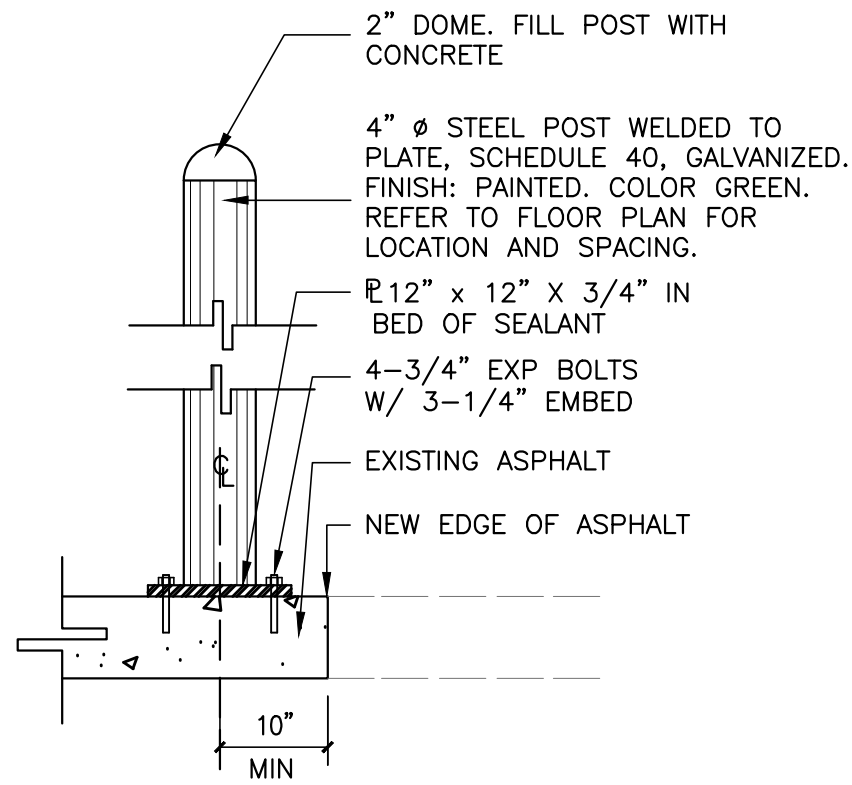
1 LOCATION PLAN
A-100 N.T.S.



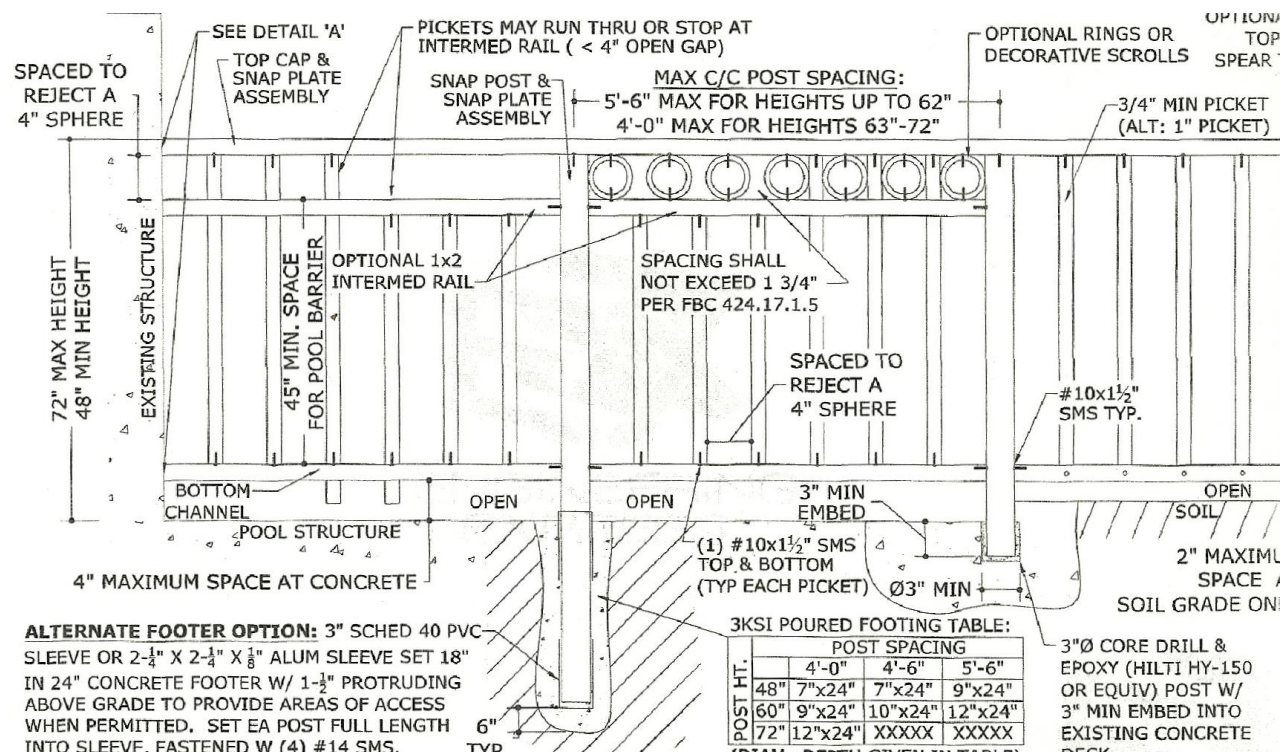
4 NEW PARKING
A-100 N.T.S.



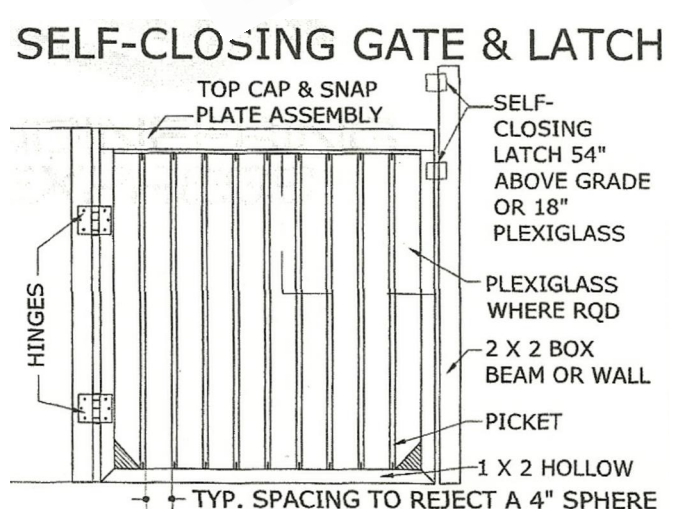
2 EXISTING CONDITION
A-100 SCALE 1'-0"=3/32"



3 BOLLARDS DETAIL
A-100 SCALE 1'-0"=1"



5 ALUMINUM FENCE DETAILS
A-100 N.T.S.



SELF-CLOSING GATE & LATCH
TYP. SPACING TO REJECT A 4" SPHERE

ADMINISTRATIVE APPROVAL 04-18-11
APPROVED

NALY ALEXANDRA CARDENAS-BARRERO
3745 S.W. 60 PLACE, MIAMI, FL 33155
786-205-5674
ANTONIO RODRIGUEZ, P.E. No. 70746
electrical@yahoo.com Tel: 786-344-6712
CARLOS FRES P.E. No.: 66042
15903 SW 74th St. Miami, FL 33193
Tel.: 786-355-7830

Architect
Engineers

TINY BLOCKS PRESCHOOL
5925 LYONS ROAD, COCONUT CREEK, FLORIDA 33073

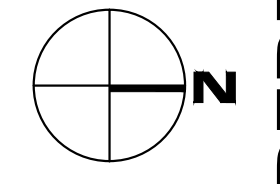
Seal
NALY ALEXANDRA CARDENAS-BARRERO

Revised:
01 2011 0328 REVISION
02 2011 0414 REVISION

LOCATION PLAN AND DETAILS

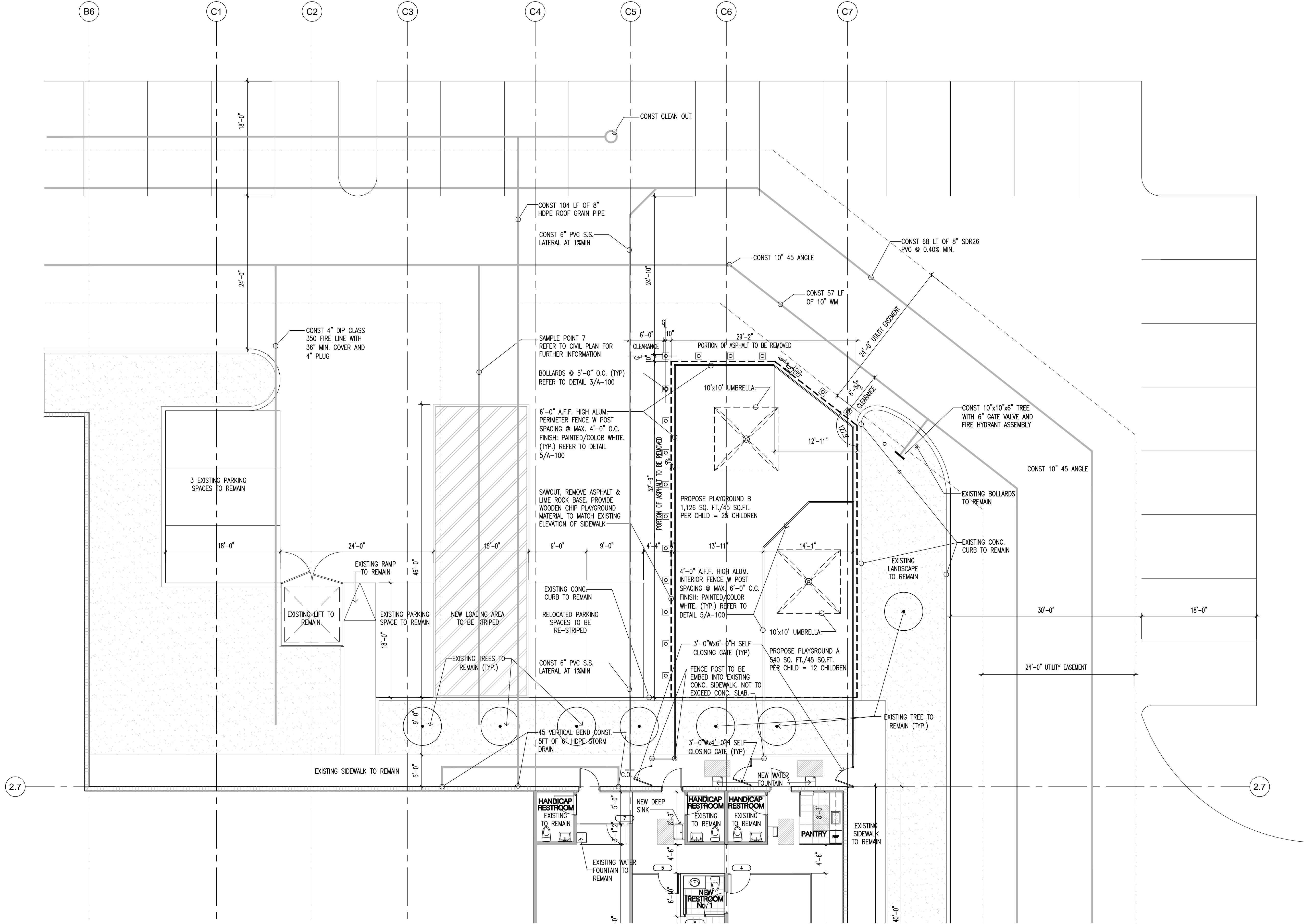
1101 HRTD 02-15-2011

A-100

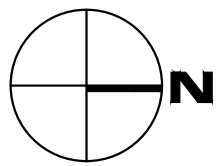


PERMIT SET

4/14/2011 12:58:26 AM PCASTANO



1 PROPOSE PLAYGROUND
A-101 SCALE 1'-0" = 1/8"



PERMIT SET

PLAYGROUND
PLAN

1101 HRTD 02-03-2011

A-101

Seal
NALY ALEXANDRA CARDENAS-BARRERO

Revised:	
01	2011 0328 REVISION
02	2011 0414 REVISION

TINY BLOCKS PRESCHOOL

5925 LYONS ROAD, COCONUT CREEK, FLORIDA 33073

NALY ALEXANDRA CARDENAS-BARRERO
3745 S.W. 60 PLACE, MIAMI, FL 33155
786-205-8674

ANTONIO RODRIGUEZ, P.E., No. 70746
: electrical@yahoo.com Tel: 786-344-6712

CARLOS FRES P.E. No.: 66042
15903 SW 74th St. Miami, FL 33193
Tel.: 786-355-7830

G:\2004\24128.01 El Dorado Furniture Coconut Creek\CONSTRUCTION\24128.01 CS UTILITY.dwg Utility sheetman.dwg 10/2006 - 11:59am

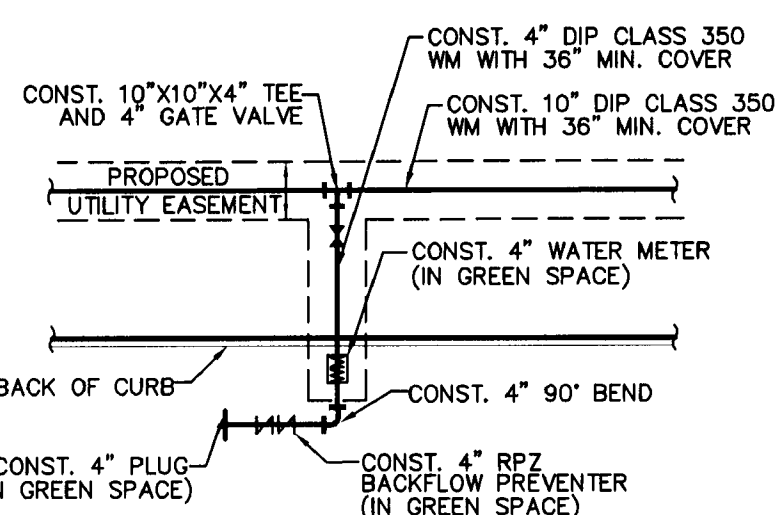
CONFLICT INFORMATION										
CONFLICT	COVER	SEWER		STORM		WATER		FIRE		CLR.
		TOP	BOP	TOP	BOP	TOP	BOP			
A	46"	-	-	12.49	8.83	7.33	6.40	-	-	18"
B	40"	-	-	12.49	8.83	7.33	6.40	-	-	18"
C	36"	-	-	-	-	11.26	10.33	13.50	12.75	18"
D	32"	-	-	13.00	10.69	9.19	8.27	-	-	18"
E	36"	5.87	5.11	-	-	13.00	12.75	-	-	83"
F	36"	6.15	5.40	-	-	-	-	13.10	12.53	77"
G	36"	5.73	4.98	-	-	13.00	12.07	-	-	76"
H	36"	-	-	-	-	9.87	9.70	12.90	12.15	27"
I	36"	-	-	-	-	9.88	9.37	13.10	12.35	30"
J	36"	-	-	-	-	9.87	9.70	13.20	12.45	31"
K	36"	-	-	-	-	10.85	10.43	13.35	12.60	27"

LEGEND

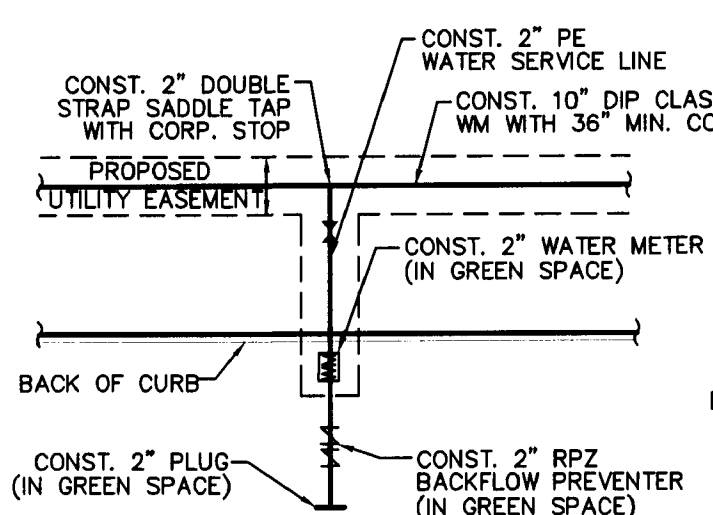
	DDC = DOUBLE DETECTOR CHECK
	WATER METER
	RPZ = BACKFLOW PREVENTER
	FDC = FIRE DEPT. CONNECTION
	SANITARY MANHOLE
	VALVE
	FIRE HYDRANT
	GRATED DROP INLET
	CURB INLET
	STORM SEWER PIPING
	SANITARY SEWER
	WATER MAIN
	GAS MAIN
	FORCE MAIN

THIS DOCUMENT, TOGETHER WITH THE CONCEPTS AND DESIGNS PRESENTED HEREIN, AS AN INSTRUMENT OF SERVICE, IS INTENDED ONLY FOR THE SPECIFIC PURPOSE AND CLIENT FOR WHICH IT WAS PREPARED. REUSE OF AND IMPROPER RELIANCE ON THIS DOCUMENT WITHOUT WRITTEN AUTHORIZATION AND ADOPTION BY CREECH ENGINEERS, INC. SHALL BE WITHOUT LIABILITY TO CREECH ENGINEERS, INC.

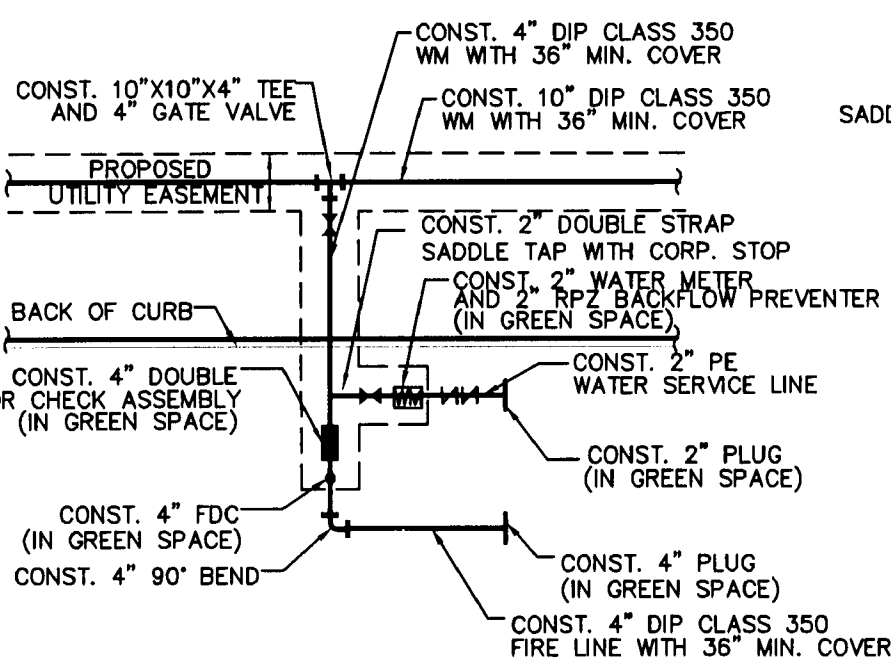
WATER DETAIL "1"
NOT TO SCALE



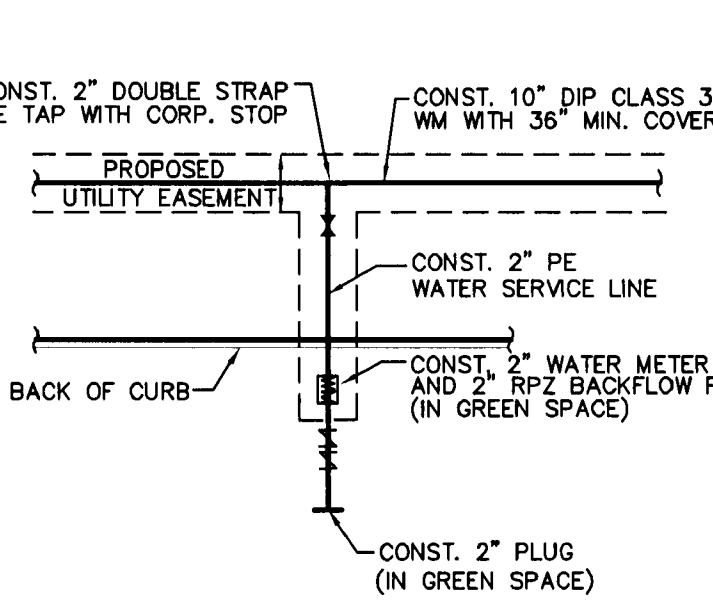
WATER DETAIL "2"
NOT TO SCALE



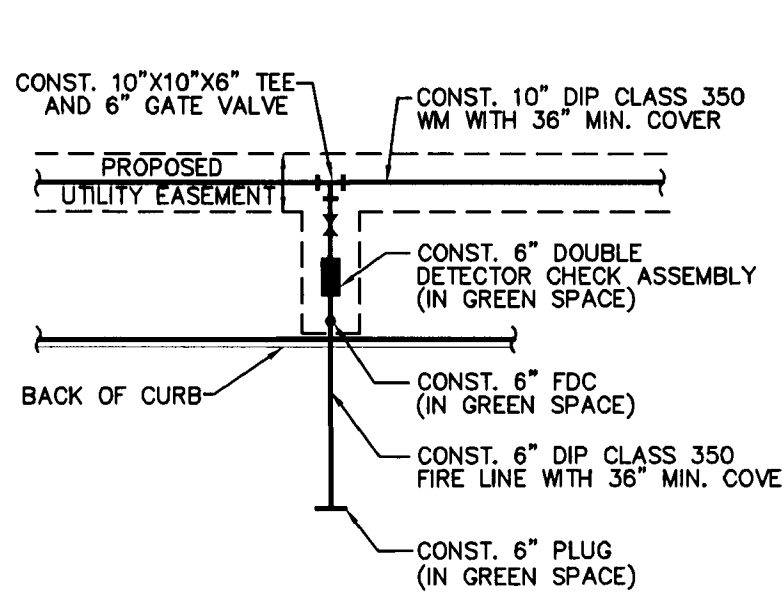
WATER DETAIL "3"
NOT TO SCALE



WATER DETAIL "4"
NOT TO SCALE



WATER DETAIL "5"
NOT TO SCALE



SANITARY STRUCTURE TABLE					
STRUCTURE	RM	N. INV.	S. INV.	E. INV.	W. INV.
MH-1	16.01	6.76	-	-	-
MH-2	15.95	-	5.59	-	5.49
MH-3	16.02	6.49	-	-	-
MH-4	16.03	7.07	7.17	-	-
MH-5	15.58	6.06	6.16	-	-
MH-6	15.29	-	5.79	5.69	-
MH-7	15.74	4.71	-	4.81	4.81

CALL 48 HOURS
BEFORE YOU DIG
1-800-432-4770



SITE UTILITY NOTES

1. LOCATION OF SITE UTILITIES SHALL BE VERIFIED BY GENERAL CONTRACTOR AND THE PROPER UTILITY COMPANY PROVIDING SERVICE.
2. GENERAL CONTRACTOR SHALL PROVIDE 2' x 2' x 6" THICK CONCRETE APRON AT ALL CLEANOUTS, VALVES AND METERS OUTSIDE OF BUILDING.
3. GENERAL CONTRACTOR WILL BE RESPONSIBLE FOR ALL TAP AND TIE IN FEES REQUIRED, AS WELL AS COST OF UNDERGROUND SERVICE CONNECTIONS TO THE BUILDING.
4. ELECTRICAL SERVICE TO PAD MOUNTED TRANSFORMER SHALL BE RUN UNDERGROUND, FROM ROAD RIGHT-OF-WAY TO TRANSFORMER LOCATION. ASSOCIATED COST BY GENERAL CONTRACTOR.
5. GENERAL CONTRACTOR SHALL FURNISH (2) - 4" TELEPHONE CONDUIT(S) AS SHOWN ON PLAN. VERIFY LOCATION OF TIE IN AT TELEPHONE COMPANY'S SERVICE LINE. PROVIDE NYLON PULL CORDS INSIDE CONDUIT.
6. MEG-A-LUGS SHALL BE PROVIDED AT ALL BENDS, TEES, AND FIRE HYDRANTS.
7. DIMENSIONS SHOWN ARE TO CENTERLINE OF PIPE OR FITTING.
8. ALL WATER AND SANITARY LEADS TO BUILDING SHALL END 5' OUTSIDE THE BUILDING LIMITS AS SHOWN ON PLAN AND SHALL BE PROVIDED WITH A TEMPORARY PLUG AT END.
9. ALL FIRE HYDRANTS SHALL BE PROVIDED WITH AN APPROVED GATE VALVE A MAXIMUM OF 5'-0" FROM HYDRANT.
10. ALL TRENCHING, PIPE LAYING, AND BACKFILLING SHALL BE IN ACCORDANCE WITH FEDERAL OSHA REGULATIONS.
11. GENERAL CONTRACTOR SHALL HAVE APPROVAL OF ALL GOVERNING AGENCIES HAVING JURISDICTION OVER THIS SYSTEM PRIOR TO INSTALLATION.
12. ALL WORK SHALL BE DONE IN STRICT ACCORDANCE WITH LOCAL UTILITY STANDARDS. ANY DISCREPANCIES BETWEEN PLAN SPECIFICATIONS OR DETAILS THE CONTRACTOR SHALL USE THE MORE STRINGENT SPECIFICATION.
13. REFER TO FIRE PROTECTION SHEETS FOR LOCATION AND DETAIL OF FIRE LINE LEAD IN.
14. FIRE LINE SHALL BE STUBBED UP 1' ABOVE FFE IN SPRINKLER ROOM.
15. REFER TO PLUMBING SHEETS FOR LOCATION OF SEWER, DOMESTIC, AND IRRIGATION CONNECTIONS.
16. CONTRACTOR SHALL NOTIFY THE UTILITY AUTHORITIES INSPECTORS AT LEAST 72 HOURS BEFORE CONNECTING TO ANY EXISTING LINE.
17. CONTRACTOR SHALL MAINTAIN A MINIMUM OF 3'-0" COVER ON ALL WATERLINES.
18. LINES UNDERGROUND SHALL BE INSTALLED, INSPECTED AND APPROVED BEFORE BACKFILLING.
19. ALL CONCRETE FOR ENCASEMENTS SHALL HAVE A MINIMUM 28 DAY COMPRESSION STRENGTH AT 3000 P.S.I.
20. DRAWINGS DO NOT PURPORT TO SHOW ALL EXISTING UTILITIES.
21. THE CONTRACTOR IS SPECIFICALLY CAUTIONED THAT THE LOCATION AND/OR ELEVATION OF EXISTING UTILITIES AS SHOWN ON THESE PLANS IS BASED ON RECORDS OF THE VARIOUS UTILITY COMPANIES, AND WHERE POSSIBLE, MEASUREMENTS TAKEN IN THE FIELD. THE INFORMATION IS NOT TO BE RELIED ON AS BEING EXACT OR COMPLETE. THE CONTRACTOR MUST CALL THE APPROPRIATE UTILITY COMPANIES AT LEAST 72 HOURS BEFORE ANY EXCAVATION TO REQUEST EXACT LOCATION OF UTILITIES. IT SHALL BE THE RESPONSIBILITY OF THE CONTRACTOR TO RELOCATE ALL EXISTING UTILITIES WHICH CONFLICT WITH THE PROPOSED IMPROVEMENTS SHOWN ON THE PLANS.
22. CONTRACTOR TO HAVE A COPY OF LOCAL UTILITY STANDARDS (LATEST EDITION) ON SITE.
23. NO VALVES, METERS, FIRE HYDRANTS, CLEANOUTS, MANHOLES, OR OTHER UTILITY APPURTENANCES ARE TO BE PLACED IN, OR ADJACENT TO, SIDEWALKS, CURBS, PARKING SPACES OR OTHER SUCH SITE FEATURES SO AS TO PRESENT A HAZARD OR RESTRICT THE MAINTENANCE OR OPERATION OF THE UTILITY INFRASTRUCTURE.
24. STANDARD FOR THE PROTECTION OF EXISTING UNDERGROUND UTILITIES:
PROTECT ALL EXISTING UNDERGROUND UTILITIES FROM DAMAGE. DUE TO THE SENSITIVITY OF THE EXISTING WATER MAIN AND FORCE MAIN, WHICH SERVE A LARGE POPULATION, THE CONTRACTOR SHALL EXERCISE EXTREME CAUTION IN AREAS OF BURIED UTILITIES. THE CONTRACTOR SHALL BE RESPONSIBLE FOR REPAIRING ANY DAMAGE(S) RESULTING FROM THE WORK PERFORMED. PRIOR TO STARTING CONSTRUCTION, AND BASED ON AN UNDERGROUND UTILITIES SURVEY OF ALL EXISTING, ON SITE, UNDERGROUND UTILITIES, (PROVIDING FOR THEIR MATERIALS, PURPOSE, LOCATION AND DEPTH), WHICH SHALL BE FURNISHED BY THE OWNER, THE CONTRACTOR SHALL LOCATE AND ADEQUATELY TAG ALL SUCH UTILITIES IN THE FIELD. OF PARTICULAR CONCERN ARE THE UNDERGROUND UTILITIES (INCLUDING BUT NOT NECESSARILY LIMITED TO WATER AND SANITARY SEWER) EXISTING ON SITE ALONG THE WEST SIDE OF THE LYONS ROAD RIGHT-OF-WAY. AT A MINIMUM, PROVIDE 6' CLEARANCE BETWEEN EXISTING UNDERGROUND UTILITIES (WATER, SEWER, ELECTRICAL, FIBER OPTICS, ETC.) AND ROOT BALLS OF TREES/PALMS, FOOTINGS, FOUNDATIONS AND ALL PROPOSED UNDERGROUND STRUCTURES. WHERE 6' (MIN.) CLEAR SEPARATION IS NOT PRACTICABLE, PROVIDE CONCRETE ENCASEMENT OF EXISTING PIPELINES AS APPROVED BY THE CITY AND CIVIL ENGINEER OR PROVIDE 3'-0" (AT A MINIMUM) CLEAR SEPARATION AND DUCTILE IRON PIPE SLEEVING, (24" LONG MINIMUM SECTION), SO AS TO PROTECT THE LINES/PIPES OF EXISTING UNDERGROUND UTILITIES. THE CONTRACTOR SHALL FIELD ADJUST THE LOCATION OF ANY AND ALL ROOT BALLS OF TREES/PALMS, FOOTINGS, FOUNDATIONS AND ALL PROPOSED UNDERGROUND STRUCTURES, TO LOCATIONS AS APPROVED BY THE ARCHITECT, SO AS TO FULLY ENSURE CONFORMANCE WITH THE AFOREMENTIONED CITY STANDARDS. THE CONTRACTOR SHALL PROVIDE FOR ANY AND ALL COSTS OF FIELD ADJUSTMENT(S) AND/OR PIPE PROTECTION. NON-INVASIVE LANDSCAPE MATERIALS ARE EXEMPT FROM THESE STANDARDS. THE CITY DOES NOT PROHIBIT PLANTINGS IN EASEMENTS. HOWEVER, THE PLACEMENT, TYPE OF PLANTINGS AND STRUCTURES, INDICATED IN THE CONSTRUCTION DOCUMENTS TO BE LOCATED ON, IN, OVER AND/OR ABOVE EXISTING EASEMENTS, SHALL BE SUBJECT TO THE COVENANTS, LIMITATIONS AND RESTRICTIONS GRANTED TO THE HOLDER(S) OF THE SUBJECT EASEMENT(S).

GRAPHIC SCALE

0 50 100 150
1 INCH = 50 FEET

EL DORADO
HOME FURNISHINGS CENTER
COCONUT CREEK

UTILITY PLAN

BROWARD COUNTY

DRAWN BY: C.B.

CHECKED BY: L.B.L.

DATE: MARCH 21, 2006

HORZ. SCALE:
VERT. SCALE: 1" = 50'

FIELD BOOK PAGE

L.B. LEONARD, P.E.
FL License No. 61757
SEAL

JUL 10 2006
PRINTED DATE

SHEET C-3

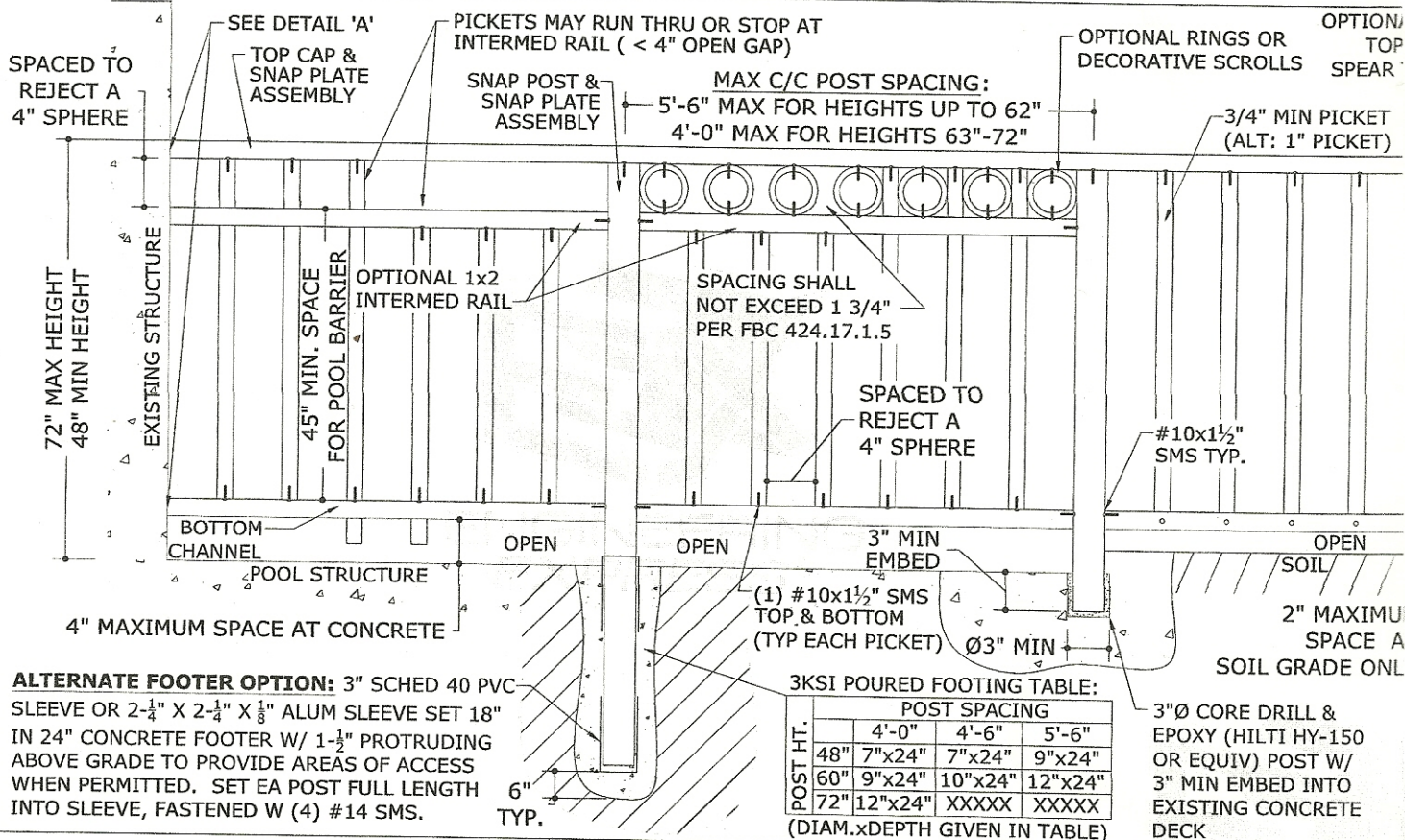
CADD FILE: 24128.01 UTILITY

PROJECT No. 24128.01

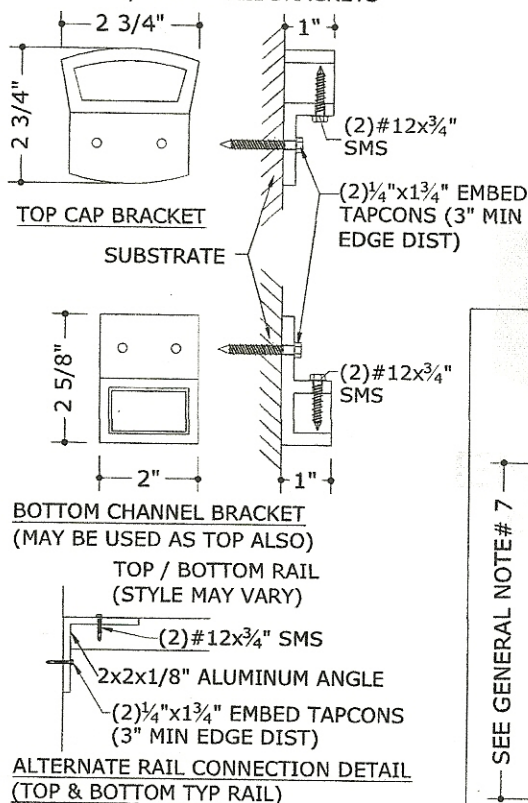
CREECH ENGINEERS, INC.
1562 PARK LANE SOUTH, SUITE 700, JUPITER, FL 33408 (561) 745-4495
OFFICES ALSO IN JENSEN BEACH, MELBOURNE AND TALLAHASSEE, FL
BOARD OF PROFESSIONAL ENGINEERS, CERTIFICATE OF AUTHORIZATION NUMBER 0139
PROFESSIONAL SURVEYORS AND MAPPERS, ANNUAL CERTIFICATE NO. 01-000070

MECHANICAL ALUMINUM FENCE AT G

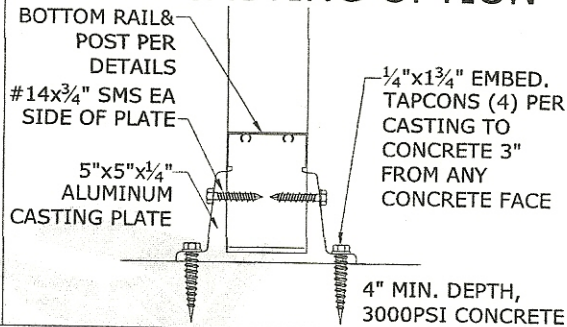
(NON-STRUCTURAL, DECORATIVE BARRIER, TYPICAL INSTALLATION (GROUND LEVEL ONLY))



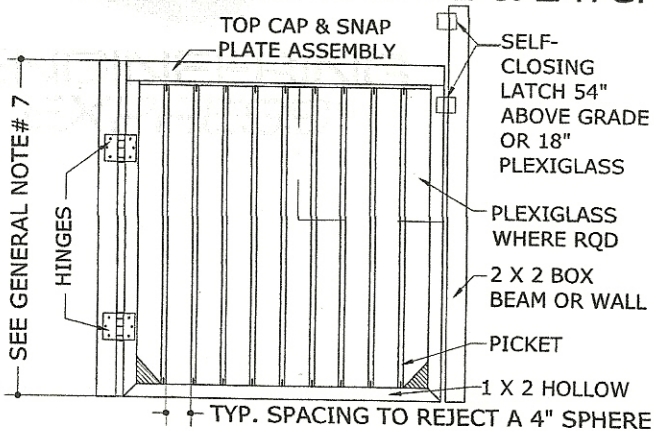
DETAIL 'A' WALL CONNECTIONS



DETAIL 'B' ALUM. CASTING OPTION



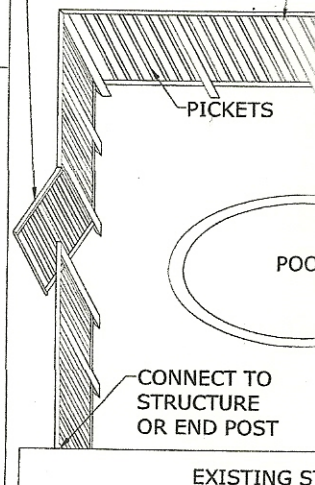
DETAIL 'C' SELF-CLOSING GATE & LATCH



DETAIL TYPICAL POOL INSTALLATION

(GROUND LEVEL ONLY)

GATE (QUANTITY & PLACEMENT MAY VARY), SEE DETAIL 'C'



ADE

FENCE EXTRUSIONS

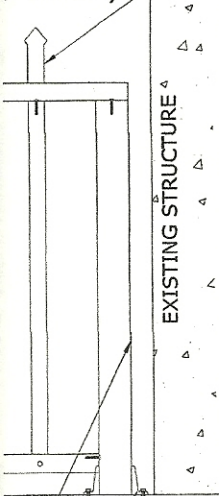
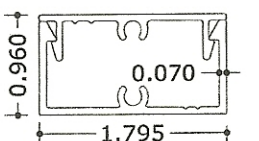
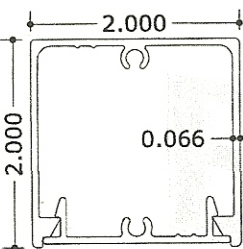
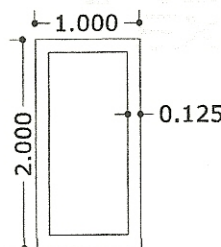
6063-T6 MINIMUM.

EXTRUSION TOLERANCES TO BE PER INDUSTRY STANDARDS

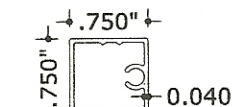
SCREW BOSSES ACCOMMODATE #10x1½" SMS ALL BOSSES TO BE USED IN CONNECTION

DRAWING VALID ONLY WITH ORIGINAL
SIGNATURE AND RAISED SEAL. VALID
FOR (1) LOCATION PER SEALED DRAWINGFRANK L. BENNARD, P.E.
#PE0046549

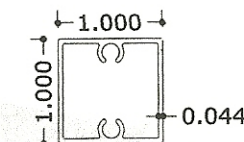
12/03/2010

VALID FOR (1) JOBS ONLY
VALID ONLY WITH RAISED ENGINEER SEALENGINEERING
EXPRESS®160 SW 12th AVENUE, #106
DEERFIELD BEACH, FL 33442
Ph: (954) 354-0660 FAX: (954) 354-0443
WWW.ENGEXP.COMCERT OF AUTH #6885
A FRANK L. BENNARD, P.E., INC. INNOVATIONINCH-THRU
FOR BLUNT
5" MAX HT)CASTING MAY
BE AT ANY
POST. SEE
DETAIL 'B'FENCE MAY
TERMINATE AT
POST, PROVIDED
SPACING RESISTS
A 4" SPHEREBOTTOM CHANNEL HR-3
& SNAP PLATE HR-2SNAP POST HR-4 &
SNAP PLATE HR-2

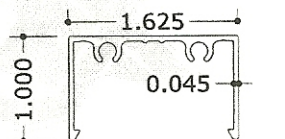
1"x2"x1/8" TUBE



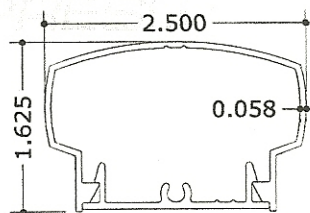
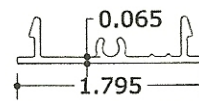
3/4" PICKET HR-13



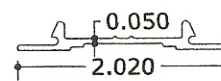
1" PICKET HR-5



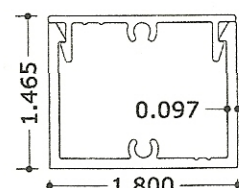
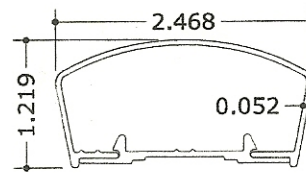
BOTTOM CHANNEL HR-12

TOP CAP HR-1 &
SNAP PLATE HR-2

SNAP PLATE HR-2



SNAP PLATE HR-11

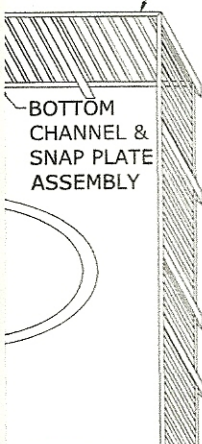
SNAP POST HR-4A &
SNAP PLATE HR-2TOP CAP HR-10 &
SNAP PLATE HR-11

GENERAL NOTES

1. THIS SYSTEM HAS BEEN DESIGNED AND SHALL BE FABRICATED IN ACCORDANCE WITH THE REQUIREMENTS OF THE 2007 FLORIDA BUILDING CODE.
2. DESIGN BASED ON ASCE 7-05 USING V = 90MPH (3 SEC GUST, UP TO 6'-2" IN HVHZ), AND 140MPH (3 SEC GUST, BEYOND 6'-2" AND OUTSIDE HVHZ), EXPOSURE 'C', CATEGORY I (I = 0.77), USING THE 'OPEN SIGN METHOD'. 80% OPEN USED IN CALCULATIONS.
3. THIS FENCE DESIGN TO BE USED AT GROUND SURFACE ONLY, WITH USE LIMITED TO DECORATIVE BARRIER PURPOSES ONLY. THIS FENCE IS NOT INTENDED TO MEET CODES GOVERNING ELEVATED BALCONIES OR STRUCTURAL RAILINGS.
4. ALL EXTRUDED MEMBERS SHALL BE MIN. ALUMINUM ALLOY TYPE 6063-T6, U.N.O.
5. ALL CONCRETE AND EPOXY TO REACH A MIN. COMPRESSIVE STRENGTH OF 3000 PSI IN 7 DAYS. CONCRETE FOOTERS SHALL CONTAIN MINIMUM 0.1% FIBERMESH CONTENT PER CUBIC YARD.
6. SURROUNDING SOIL TO BE COMPACTED TO 98% OPTIMUM DENSITY, 2500 PSF MIN.
7. PER FBC 424.2.17.1.8: ACCESS GATES WHEN PROVIDED MUST BE AT LEAST 48" ABOVE GRADE & EQUIPPED WITH A SELF CLOSING, SELF LATCHING LOCKING DEVICE NOT LESS THAN 54" FROM BOT OF GATE. GATE MUST OPEN OUTWARD AWAY FROM POOL & MUST HAVE NO OPENING >1/2" WITHIN 18" OF RELEASE MECHANISM.
8. THE CONTRACTOR IS RESPONSIBLE TO INSULATE ALUMINUM MEMBERS FROM DISSIMILAR METALS TO PREVENT ELECTROLYSIS.
9. ELECTRICAL GROUND, WHEN REQUIRED, TO BE DESIGNED & INSTALLED BY OTHERS.
10. ANY HINGE AND LATCH SHALL BE STRUCTURAL QUALITY MOLDED POLYMERS OR ZINC COATED METALS AND SHALL BE INSTALLED PER MANUFACTURER'S RECOMMENDATIONS & ANY APPLICABLE CODES.
11. ENGINEER SEAL AFFIXED HERETO VALIDATES STRUCTURAL DESIGN AS SHOWN ONLY. USE OF THIS SPECIFICATION BY CONTRACTOR, et. al. INDEMNIFIES & SAVES HARMLESS THIS ENGINEER FOR ALL COST & DAMAGES INCLUDING LEGAL FEES & APPELLATE FEES RESULTING FROM MATERIAL FABRICATION, SYSTEM ERECTION, CONSTRUCTION PRACTICES BEYOND THAT WHICH IS CALLED FOR BY LOCAL, STATE, & FEDERAL CODES & FROM DEVIATIONS OF THIS PLAN.
12. ENGINEERING EXPRESS HAS NOT VISITED THIS JOBSITE. INFORMATION CONTAINED HEREIN IS BASED ON CONTRACTOR-SUPPLIED DATA AND MEASUREMENTS. ENGINEERING EXPRESS SHALL NOT BE HELD RESPONSIBLE OR LIABLE IN ANY WAY FOR ERRONEOUS OR INACCURATE DATA OR MEASUREMENTS. DIMENSIONS ARE SHOWN TO ILLUSTRATE DESIGN FORCES AND OTHER DESIGN CRITERIA. THEY MAY VARY SLIGHTLY, BUT MUST REMAIN WITHIN THE LIMITATIONS SPECIFIED HEREIN. WORK SHALL BE FIELD VERIFIED BY OTHERS PRIOR TO CONSTRUCTION. ENGINEERING EXPRESS SHALL BE NOTIFIED AND GIVEN AN OPPORTUNITY TO RE-EVALUATE OUR WORK UPON DISCOVERY OF ANY INACCURATE INFORMATION PRIOR TO MODIFICATION OF EXISTING FIELD CONDITIONS AND FABRICATION AND INSTALLATION OF MATERIALS.
13. EXCEPT AS EXPRESSLY PROVIDED HEREIN, NO ADDITIONAL CERTIFICATIONS OR AFFIRMATIONS ARE INTENDED.

BARRIER
ION

(MAY VARY)

P POST & SNAP
TE ASSEMBLYP CAP & SNAP
TE ASSEMBLY

UCTURE

MECHANICAL FENCE AT GRADE

MASTER PLAN SHEET

REMARKS	DRWN	CHKD	DATE
INIT ISSUE	DW	FLB	03/31/05
EX WATERMARK	DNS	FLB	06/01/07
REVISE FOR 07 FBC	TSB	FLB	03-02-09

COPYRIGHT ENGINEERING EXPRESS

5184

SCALE: 01

CONTRACT ID:

1

OF 1

I. BENJAMIN MOORE - CLASSIC COLOR SELECTION:

BUILDINGS COLORS:

LIGHT BEIGE "ALPACA" #1074 (MAIN BUILDING)

MEDIUM BEIGE "FAIRWAY OAKS" #1075 (SELECT BUILDING PANELS AND BASE)

ACCENT COLORS:

OFF WHITE - "SAND DUNES" #1072 (ALL RAISED CORNICES AND BANDS)

LIGHT CORAL - "GRAZING FAUN" #1220 (SELECT PANEL INSERTS)

II. CANVAS AWNINGS - SUNBRELLA "FIRESIST":

DARK GREEN - "HEMLOCK TWEED" - BASE AWNING

OFF WHITE - "CANVAS" - ACCENT STRIPES

III. ROOF TILE

HANSON ROOF TILE SPANISH "S" - "ADDISON BLEND" TERRA COTTA COLORS WITH AGED LOOK VIA GREY ACCENTS.

IV. LIGHT FIXTURES

DARK GREEN - "HEMLOCK TWEED" BRACKET MOUNTED "STERNBERG" LIGHT FIXTURE.

V. STOREFRONT AND TRUSS FEATURES:

OFF WHITE KYNAR PAINT FINISH ON 4 1/2" X 2" FRAME SYSTEM ?"
CLEAR GLASS.



Model 6039 A

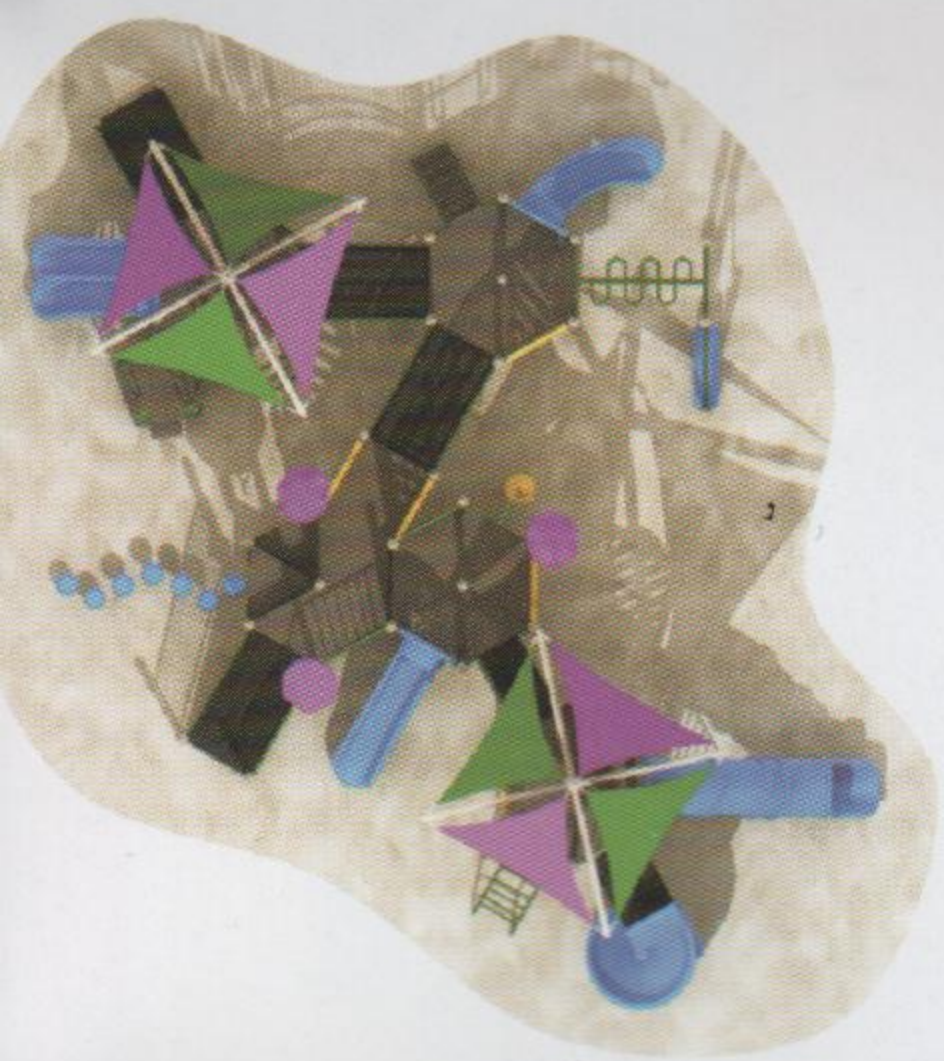
Cap.50 children

Age 2 to 12 Years

Area 56'×24'×14'h

Dime. 17.8×7.9×4.5 m

*Pod included



Canopi - Umbrella

ALL PLAYSETS MUST BE INSTALLED OVER IMPACT-ATTENUATING SURFACING AND 6' AROUND