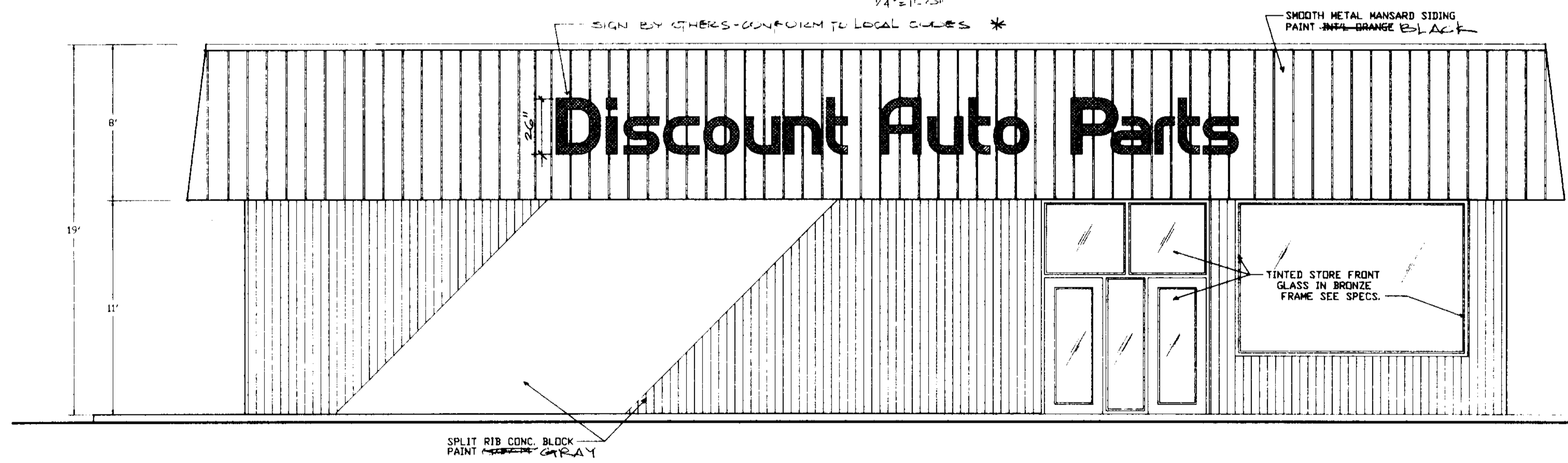


NORTH ELEVATION (LEFT)
1/4" = 1'-0"



WEST ELEVATION (FRONT)
1/4" = 1'-0"

NOTE:
SIGN TO BE MAX 26' HIGH
INTERIALLY LIT
SIGN TO BE MAX 75% SIZE OF FASCIA.
(PER ZONING CODE SEC 13-45B.2)
COLOR: ~~EVERY~~ RED
LETTER TYPE: CUSTOM (AS PER AFR SIGN INC)
SEE SAMPLE
REV. COLORS 10/11/89 A212 A61

ALL GENERAL ARRANGEMENTS, AND DETAILS INCLUDE THE PROPERTY OF TECHNICAL ASSOCIATES, INC. AND NOT BE REPRODUCED OR TRANSMITTED IN ANY FORM OR BY ANY MEANS, WITHOUT THE WRITTEN PERMISSION OF TECHNICAL ASSOCIATES, INC. CONTRACT NO. 89067. THIS OFFICE FOR APPROVAL BEFORE PROCEEDING WITH ANY ACTION.

PROPOSED ONE STORY BUILDING FOR:
DISCOUNT AUTO PARTS

FLORIDA
COCONUT CREEK

teconics associates ■ architects and planners
6658 northwest 44th street, sunrise, florida 33351
(305) 572-8590

DATE 9-6-89
9-25-89

SCALE A-1

PROJECT NUMBER
89067

SHEET NUMBER
A-3

Joe Maus
2-89