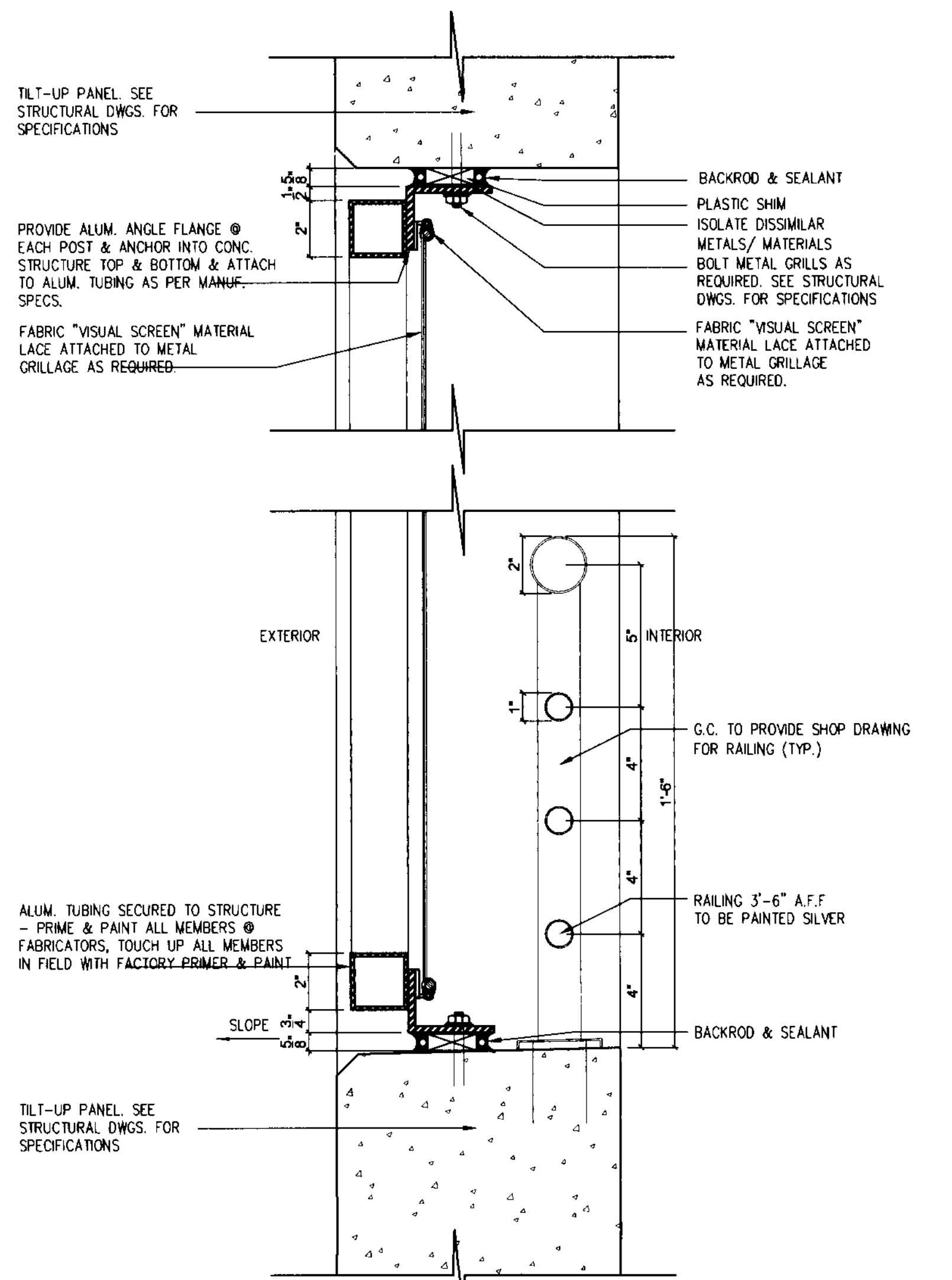
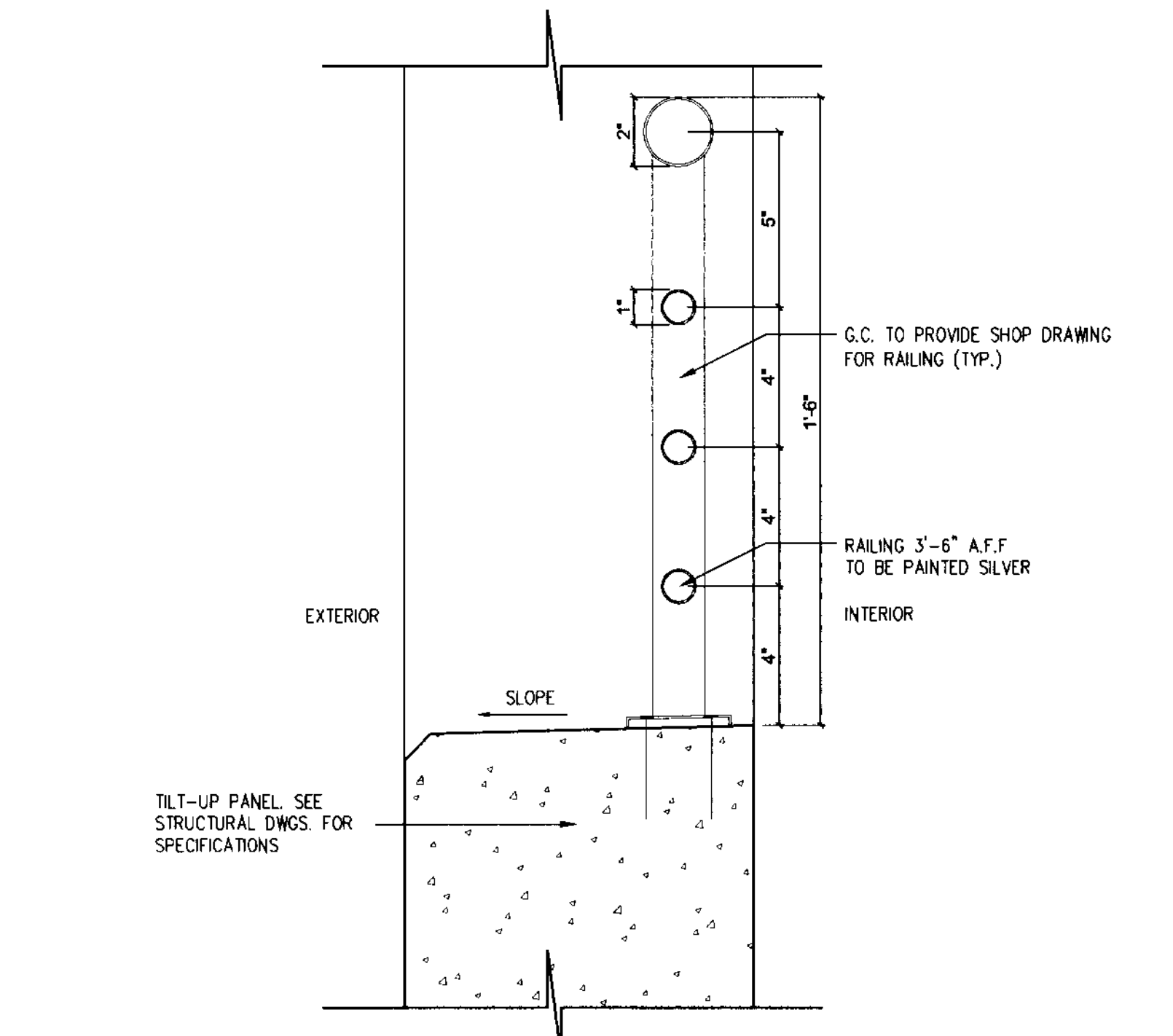


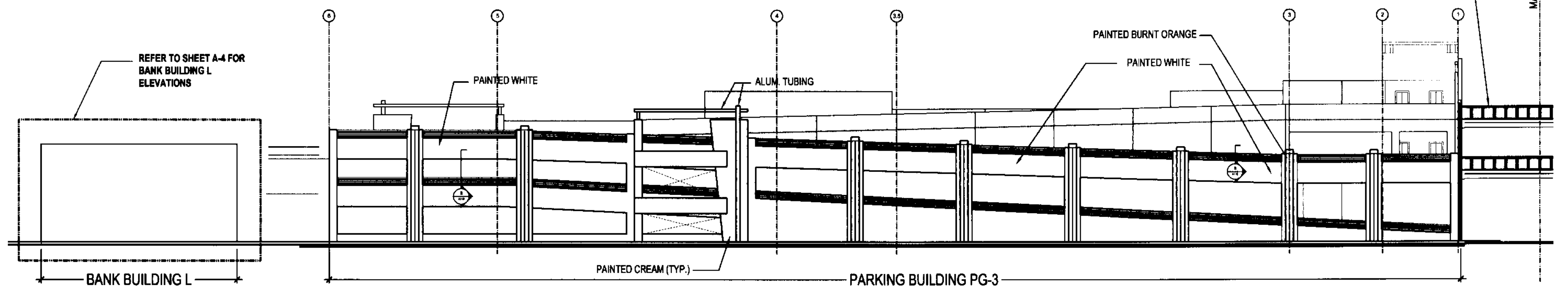
TENANT SIGNS TO COMPLY WITH APPROVED SIGNAGE PLAN



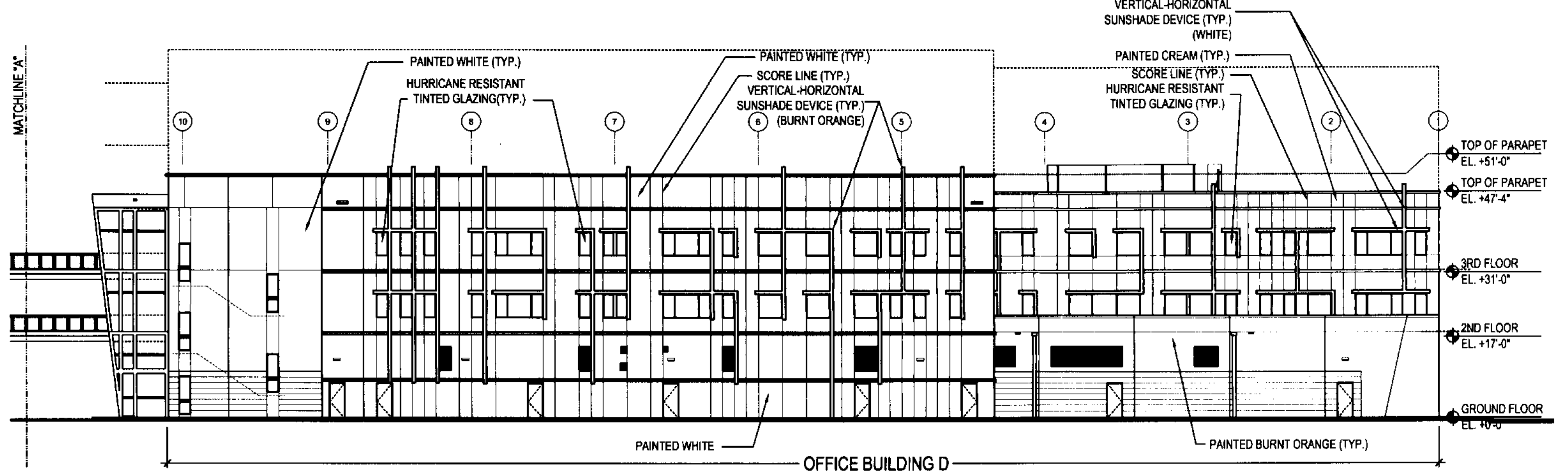
RAILING / MESH SCREEN DETAIL
PG3 3" = 1'-0"



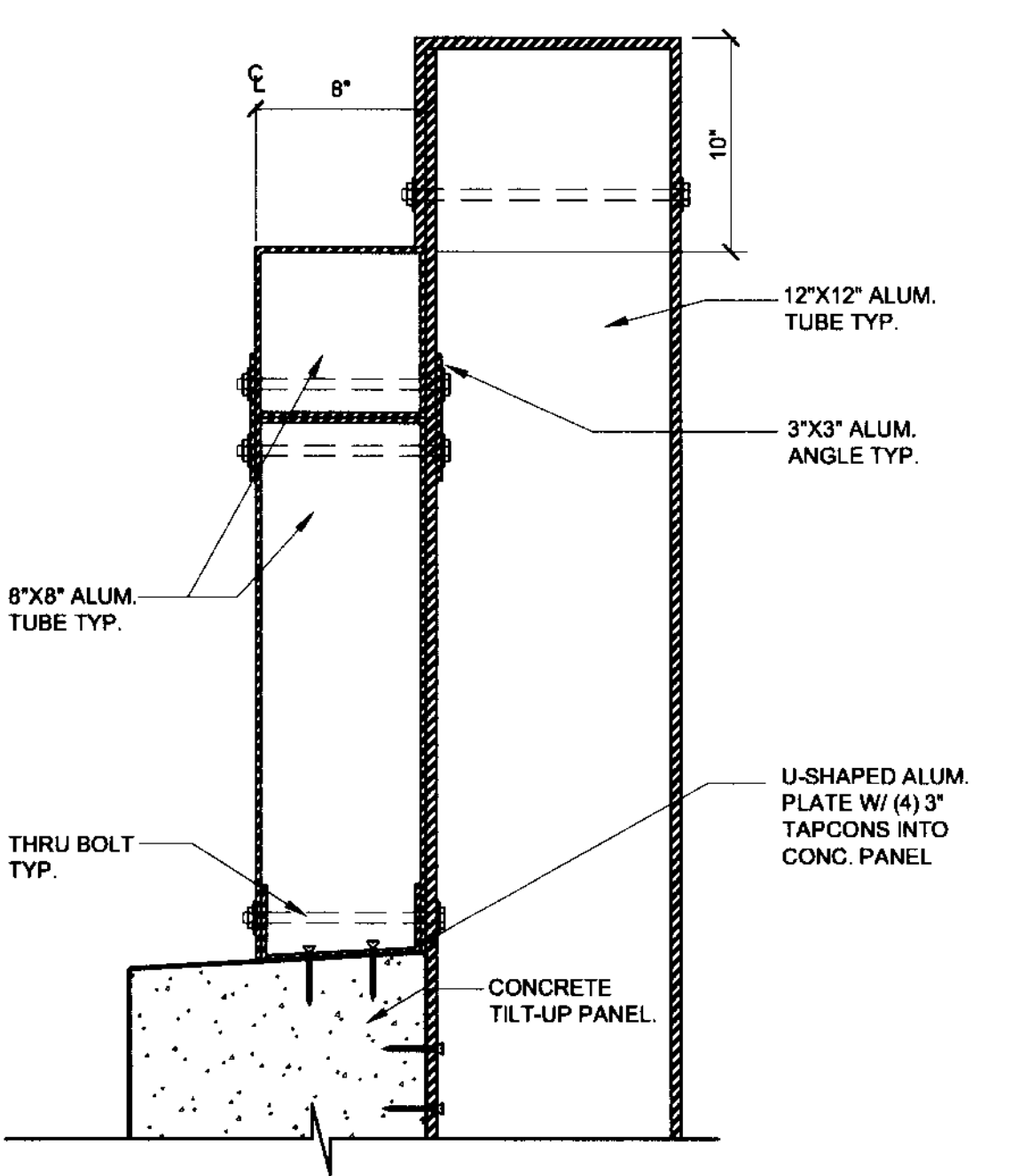
RAILING DETAIL
PG3 3" = 1'-0"



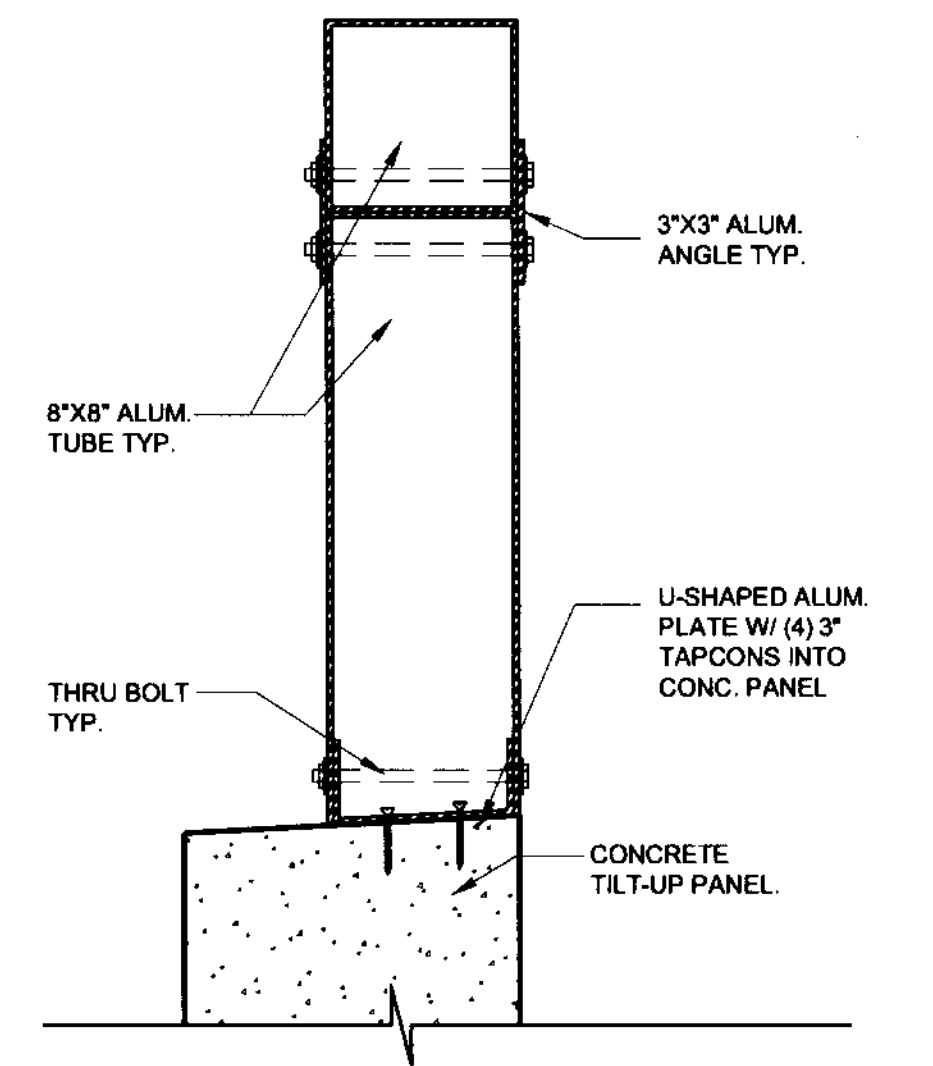
WEST ELEVATION
BUILDING L, PG3 1" = 20'



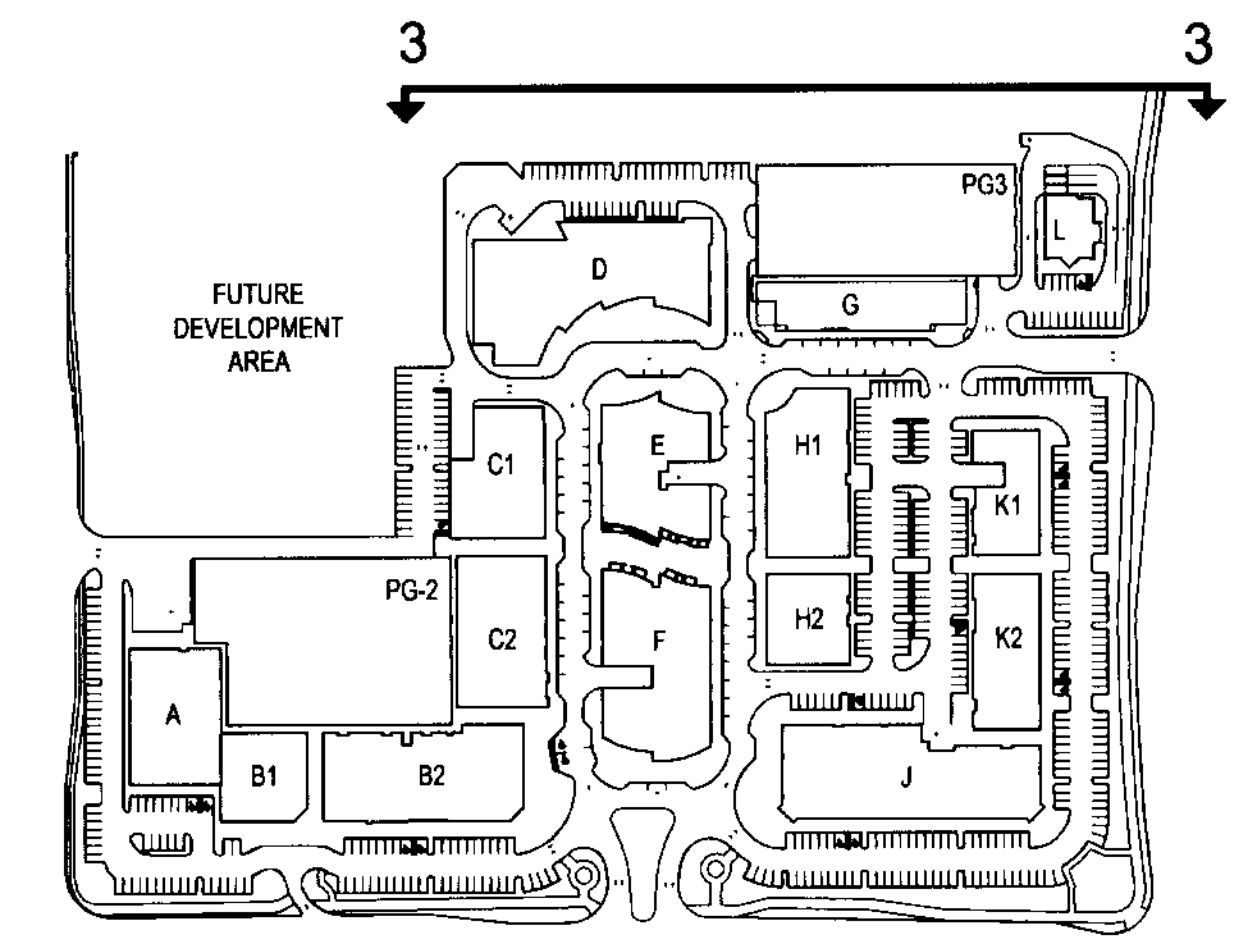
WEST ELEVATION (CONT.)
BUILDING D 1" = 20'



ALUM. TUBING DETAIL
PG3 1-1/2" = 1'-0"



ALUM. TUBING DETAIL
PG3 1-1/2" = 1'-0"



KEY PLAN

Regis J. Korba Victor K. Yue
AR 0015112 AR 0013087

Issue: 03-28-2006
SITE PLAN Submittal
DRC Comments #1 04-27-2006
Rev. #3 Tree & Plant 07-06-2006
Rev. #4 Final Engin. 12-15-2006
Rev. #5 Final Site App. 01-29-2007
Rev. #6 Admin. App. 06-25-2007
Rev. #7 Admin. App. 08-16-2007
Rev. #8 Admin. App. 12-04-2007
Bldg. L-Bank Bldg. C, PG3
Rev. #9 Revised Admin. 03-07-2008
Approval Resubmission
Rev. #10 Revised Admin. 04-01-2008
Approval per Comments
Rev. #14 Revised Admin. 08-01-2008
Central Plaza Area
Rev. #16 Revised Admin. 09-15-2008
City Comments - Central Plaza Area
Rev. #17 VE PG3 03-11-2009

DORSKY HODGSON PARRISH YUE
AA 26001261
Architecture
Planning
Interiors
Environmental Graphics
Cleveland
Fort Lauderdale
Washington DC
Ft. Lauderdale, Florida 33394
Phone (954) 524-8686
Fax (954) 524-8604

APPLICANT: **COCONUT CREEK DEVELOPMENT LLC**
SOUTH WEST CORNER OF LYONS ROAD AND WILLES ROAD, COCONUT CREEK, FLORIDA
Date: 03-21-09
Checked: []
Drawn: []
Job No.: 2008113

A 110