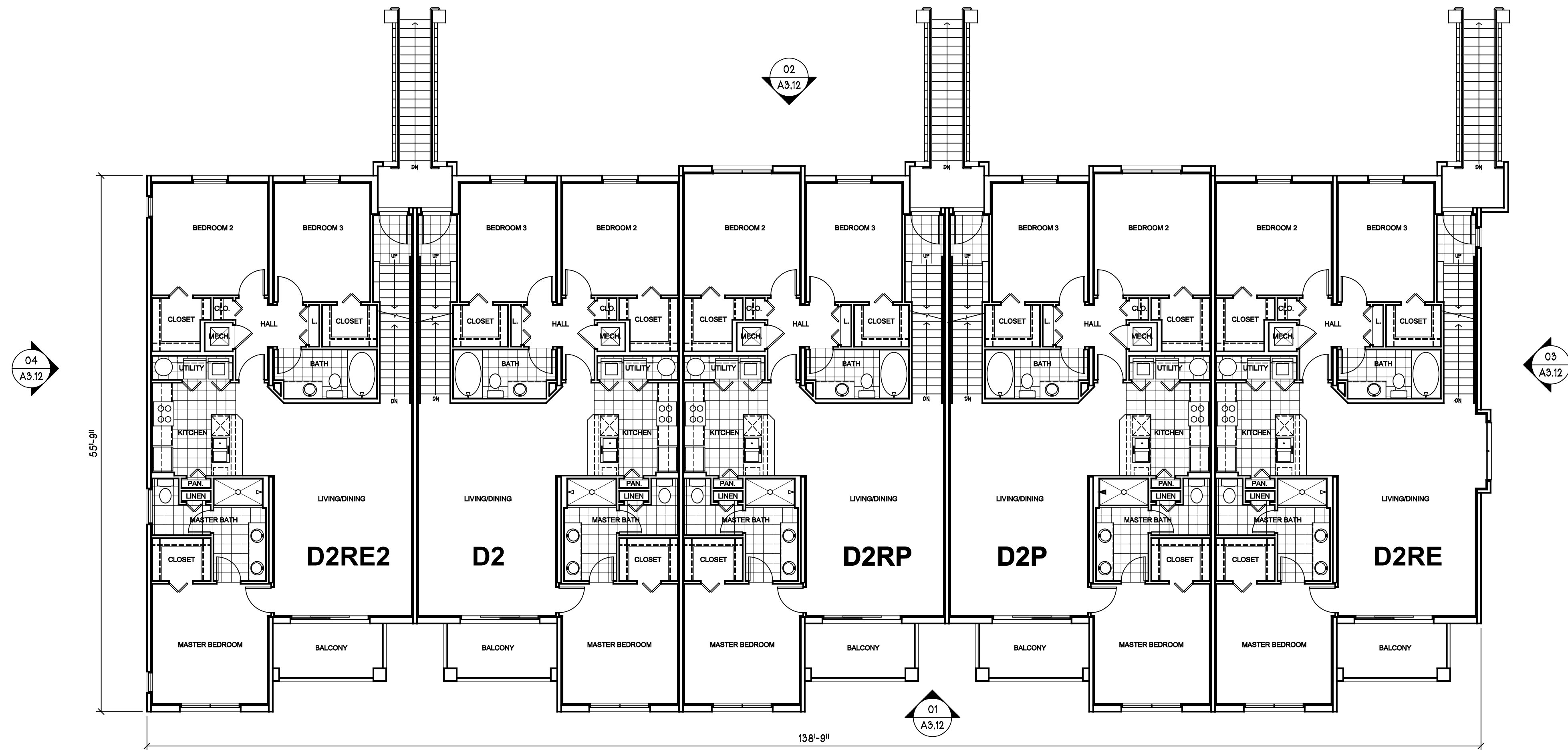
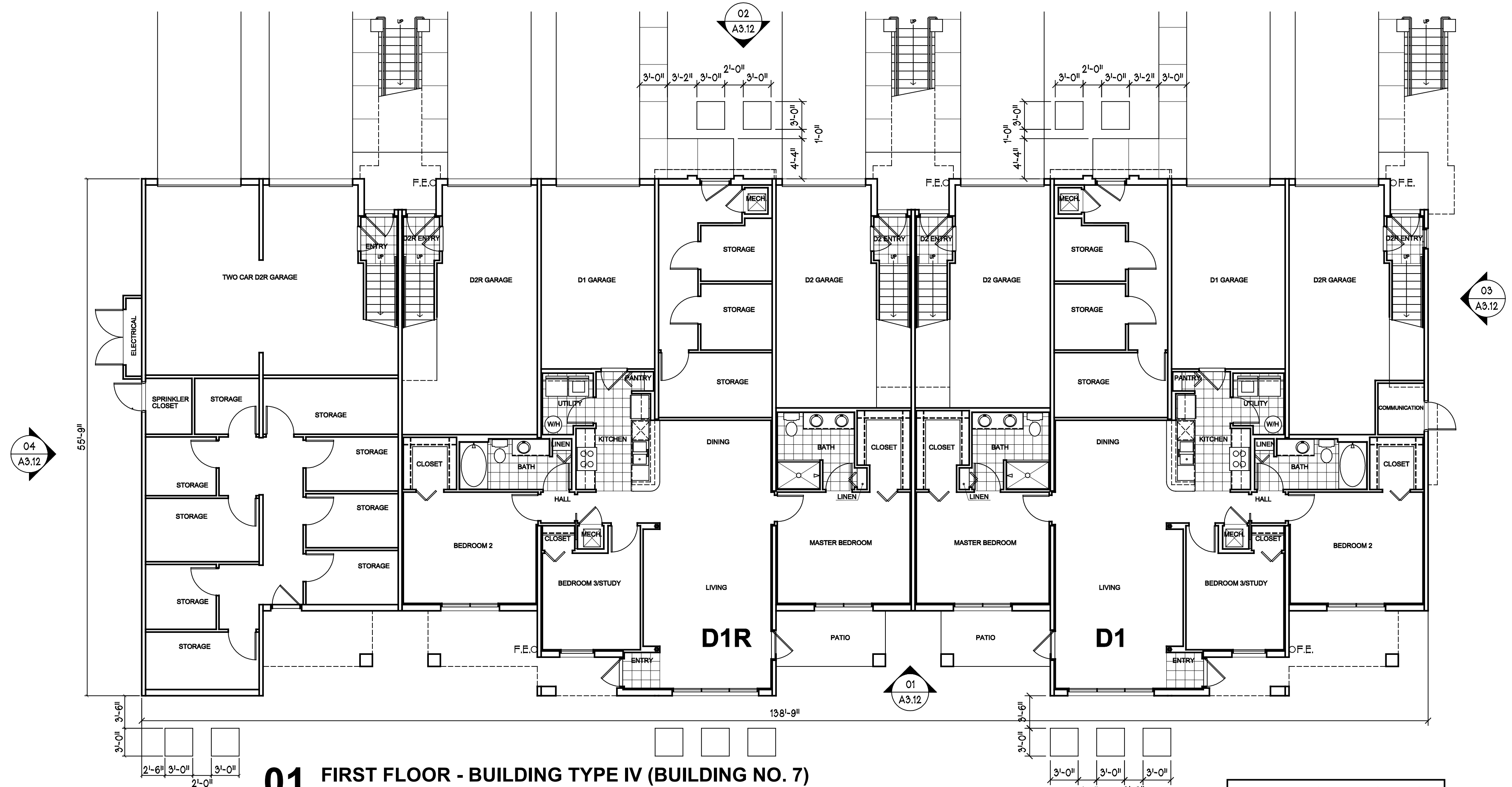


THIS ELECTRONIC DRAWING FILE IS RELEASED UNDER THE AUTHORITY OF STB ARCHITECTS AND PLANNERS, INC. JERRY W. STEWART, PRINCIPAL, TEX. ARCH. REG. NO. 34652 ON JULY 31, 2004, WHO MANTAINS THE ORIGINAL FILE. THIS ELECTRONIC FILE MAY BE USED AS A BACKGROUND DRAWING PURSUANT TO RULE 100.01 OF THE RULES AND EXAMINERS. NO PERSON MAY MAKE ANY MODIFICATIONS TO THIS ELECTRONIC DRAWING FILE WITHOUT THE ARCHITECT'S EXPRESSED WRITTEN PERMISSION.

H:\0706\DD\A3-10



**02 SECOND FLOOR - BUILDING TYPE IV (BUILDING NO. 7)**  
1/8" = 1'- 0"



**01 FIRST FLOOR - BUILDING TYPE IV (BUILDING NO. 7)**  
1/8" = 1'- 0"

F.E. = FIRE EXTINGUISHER AND CABINET

**NOT FOR CONSTRUCTION**  
©2008 STB Architects and Planners, Inc.  
Proprietary Designs of STB Architects and Planners, Inc.  
NOT TO BE COPIED, USED OR REPRODUCED  
WITHOUT WRITTEN PERMISSION.

BEL LAGO - Coconut Creek, Florida  
Altman Development Corporation  
**CARRIAGE HOME**  
CAPARTMENT S

revisions:

date:  
09/19/08  
job no.:  
0708

sheet  
number:  
**A3.10**  
of

**STB**  
architects & planners, inc.  
8144 walnut hill lane · suite 460 lb 107 · dallas, tx. 75231  
(214) 739-8080 fax (214) 739-8084