



SYNALOVSKI ROMANIK SAYE
Architects • Planning • Interior Design

1800 Eller Drive, Suite 500
Fort Lauderdale, FL 33316
T 954.961.6806
F 954.961.6807
www.synalovski.com

Manuel Synalovski, AIA
AR 0011628
SEAL

LICENSE NO. AA26001863

WINDMILL PARK

700 LYONS ROAD
COCONUT CREEK, FL 33063

CLIENT: CITY OF COCONUT CREEK

REV	DATE	DESCRIPTION

DESIGN DELIVERABLE: PERMIT SET
ISSUE DATE: 01/26/16

PROJECT NUMBER: 1252-140622

DRAWN BY: KW

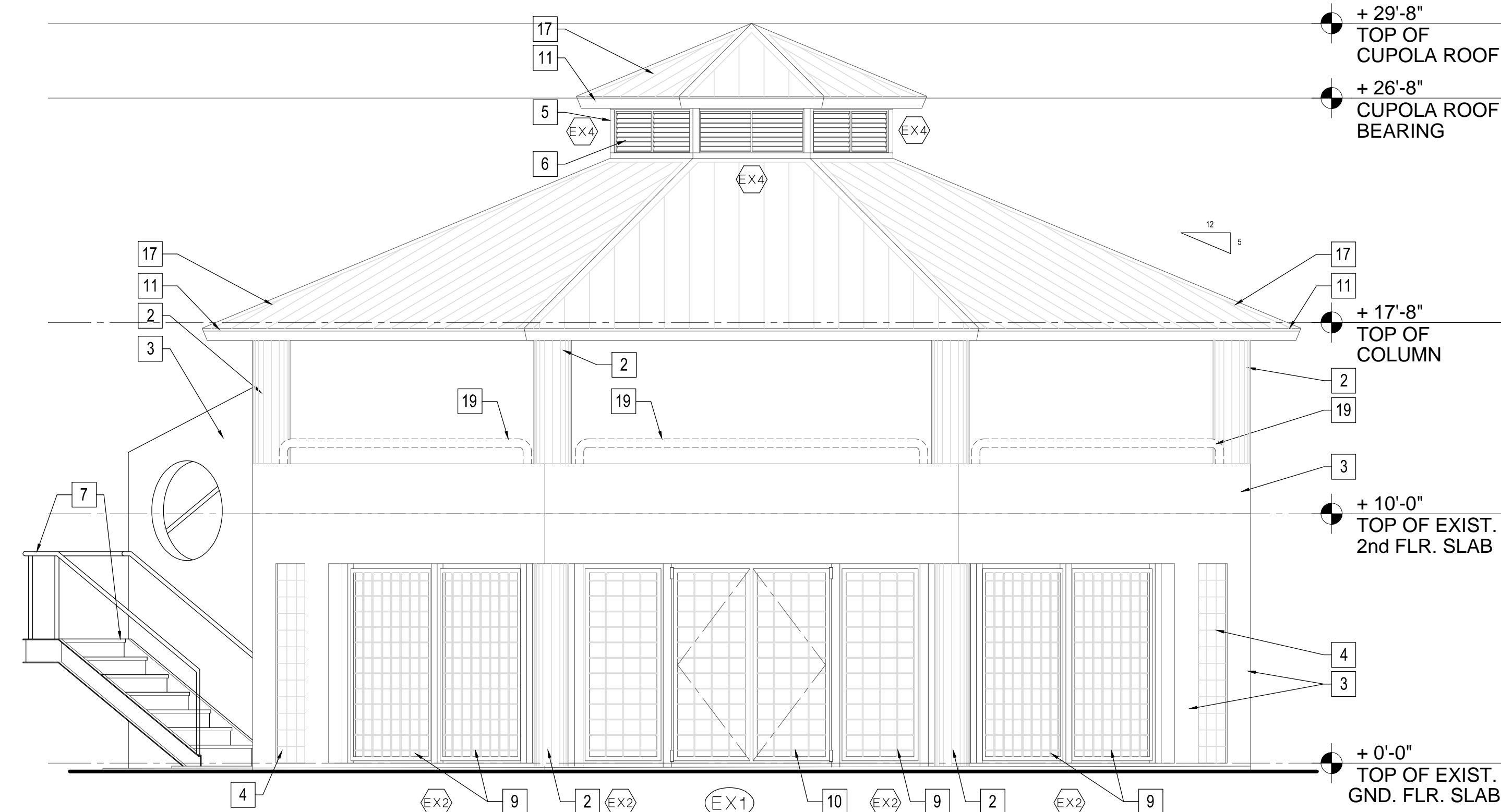
CHECKED BY: MR

Copyright (c) by SYNALOVSKI ROMANIK SAYE
All Rights Reserved.

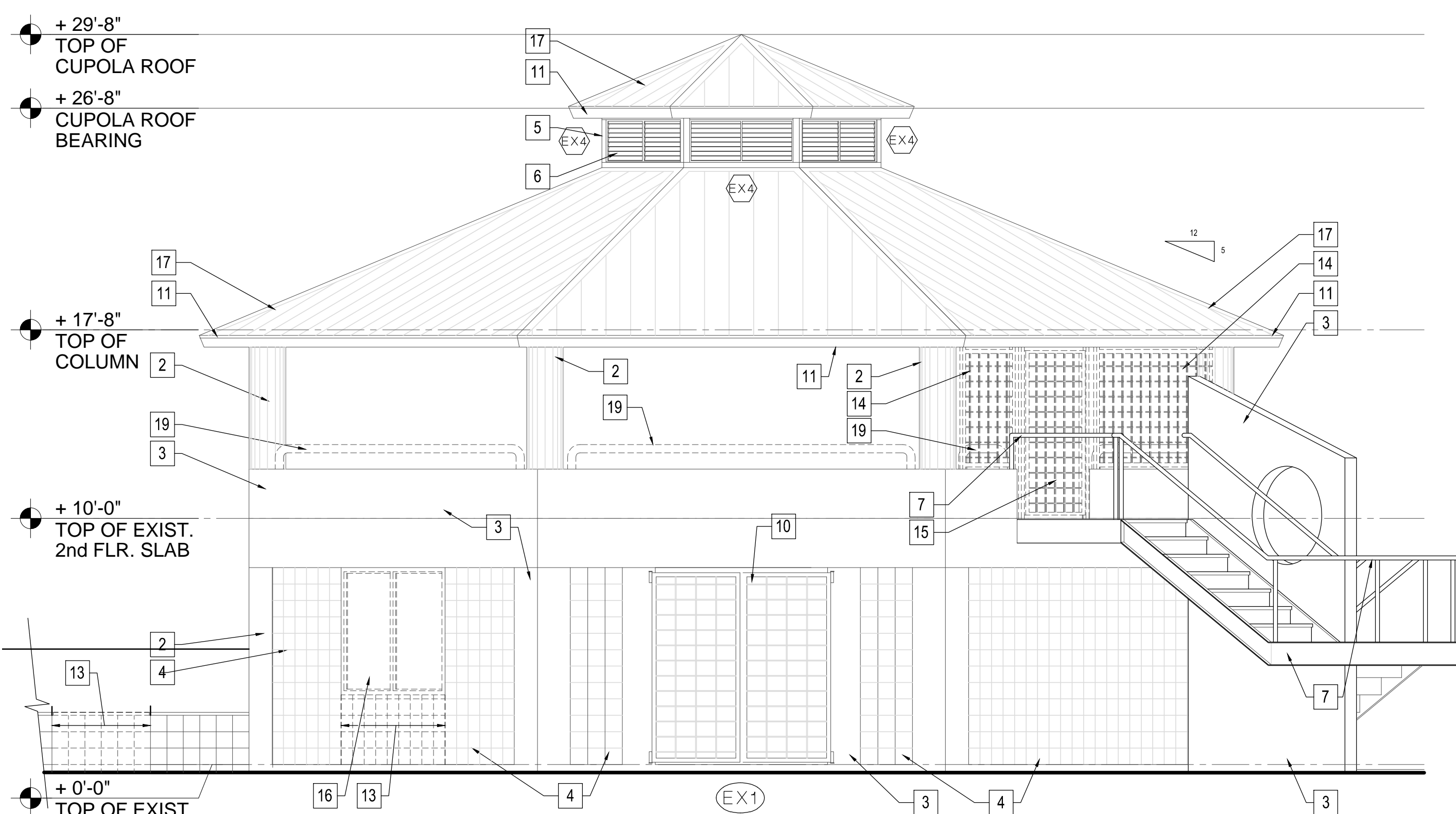
SHEET TITLE:
**EXISTING PAVILION
DEMOLITION
ELEVATIONS**

SHEET NUMBER:

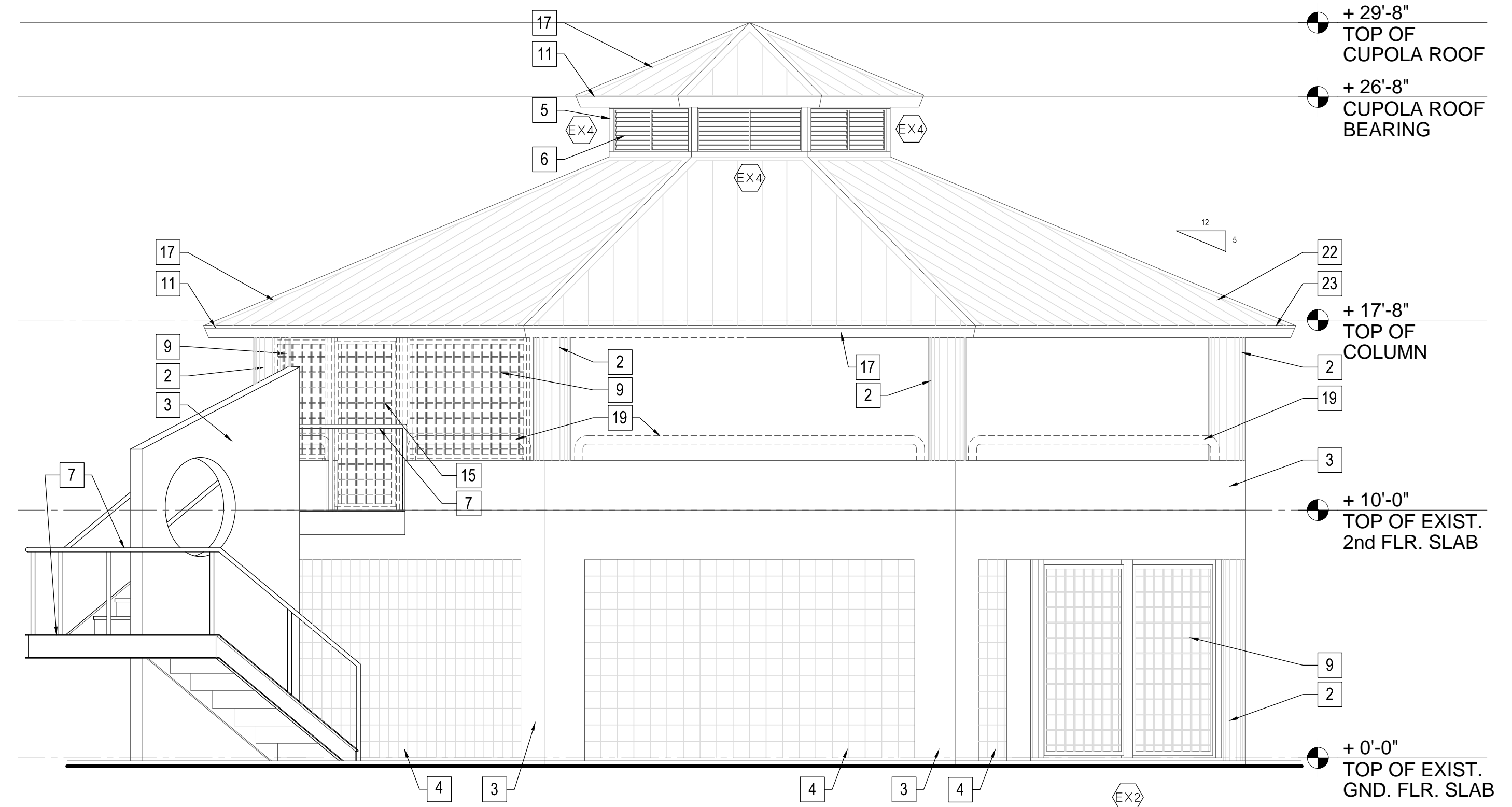
A1-0.2



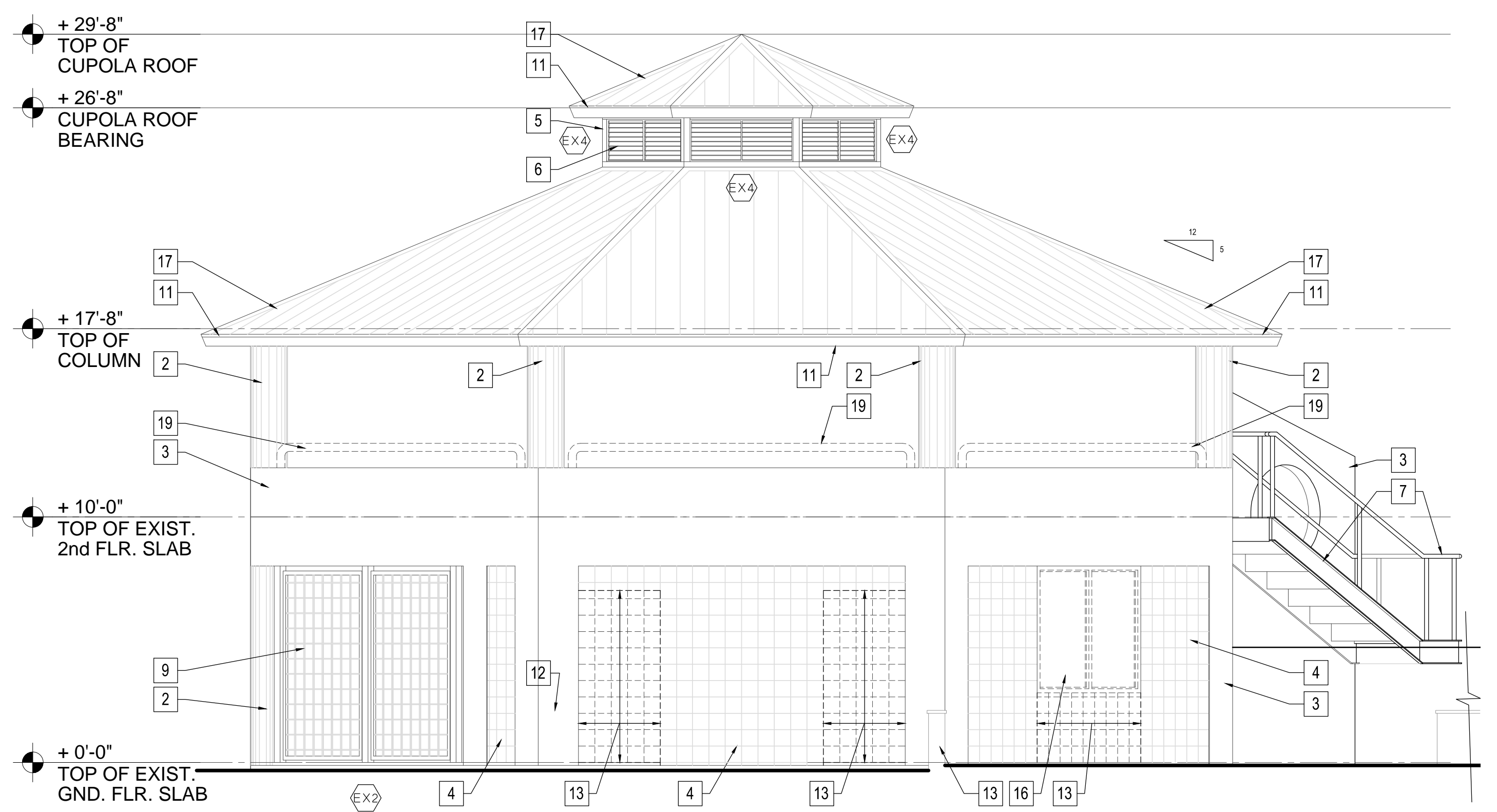
1 FRONT ELEVATION (South Face)
1/4" = 1'-0"



2 REAR ELEVATION (North Face)
1/4" = 1'-0"



3 LEFT SIDE ELEVATION (West Face)
1/4" = 1'-0"



4 RIGHT SIDE ELEVATION (East Face)
1/4" = 1'-0"

- | | | |
|---|--|--|
| <ul style="list-style-type: none"> 1 EXIST. CONC. BEAM OR TIE BEAM TO REMAIN (SEE STRUCT. DWG'S.) 2 EXIST. CONC. COLUMN TO REMAIN (SEE STRUCT. DWG'S.) 3 EXIST. STUCCO FINISHED CONC. OR 8" MASONRY TO REMAIN. 4 EXIST. PAINTED, EXPOSED 8" x 8" STACKED MASONRY WALL TO REMAIN. 5 EXIST. HEAVY TIMBER WD. STRUCTURE TO REMAIN. 6 EXIST. EXPOSED WD. LOUVERS TO REMAIN. 7 EXIST. PAINTED MTL. STAIR, SAFEGUARD & HAND RAIL TO REMAIN. (TYP.) 8 EXIST. DOOR or WINDOW UNIT TO REMAIN (SEE DOOR & WINDOW SCHEDULES) 9 EXIST. PAINTED MTL. SECURITY SCREEN INFILL TO REMAIN. (TYP.) | <ul style="list-style-type: none"> 10 EXIST. PAINTED MTL. SECURITY GATE TO REMAIN. (TYP.) 11 EXIST. WD. FASCIA TO REMAIN. PATCH & REPAIR TO MATCH AS REQ'D. (TYP.) 12 PORTION OF STUCCO FINISHED CONC. OR 8" MASONRY TO BE REMOVED. 13 PORTION OF EXPOSED 8" x 8" STACKED MASONRY WALL TO BE REMOVED CAREFULLY TO AVOID ANY DAMAGE TO SURROUNDING SURFACES TO REMAIN. 14 EXIST. PAINTED MTL. SECURITY SCREEN INFILL TO REMOVED. 15 EXIST. PAINTED MTL. SECURITY GATE TO BE REMOVED. 16 EXIST. DOOR or WINDOW UNIT TO BE REMOVED. 17 EXIST. MTL. ROOF SYSTEM TO BE REMOVED. PREPARE EXIST. T&G WD. DECKING FOR NEW MTL. ROOF AND INSULATION SYSTEM AS REQ'D. (TYP.) | <ul style="list-style-type: none"> 18 REMOVE THIS ELEVATION'S PORTION OF FASCIA. PREPARE FOR NEW SLOPED ROOF EXTENSION STRUCTURE AND DECKING AS REQ'D. (TYP.) 19 REMOVE EXIST. STL. PIPE RAIL SAFEGUARD CAREFULLY TO AVOID UNNECESSARY DAMAGE TO EXIST. KNEEWALL TO REMAIN. (TYP.) PATCH KNEEWALL AS REQ'D. TO PREPARE FOR NEW FRAME WALL INFILL. (SEE STRUCT. DWG'S.) |
|---|--|--|

5 DEMOLITION NOTE LEGEND
NO SCALE

DEMOLITION NOTE LEGEND AND
DEMOLITION REFINISHMENTS ADDED